



Art in Norwich

‘What’s on?’

a round-up of visual art, sculpture
and architectural events in Norwich

March-August 2013

at a glance : March '13–August '13

MARCH

To 2 March	Anteros Arts : Richard Wade	5
To 1 April	Norwich Cathedral : Ted Harrison	2
1 Mar–14 Apr	OUTPOST Offsite at Kettle's Yard, Cambridge	28
2–21 March	OUTPOST : Bcc # 11	28
9 March	Sainsbury Centre : Changing Landscapes: The Art Lab	29
9 March	Sainsbury Centre : Changing Landscapes: Ackroyd & Harvey, Beuys' Acorns	30
9 March	Sainsbury Centre : Changing Landscapes: Ackroyd & Harvey, Stranded	30
11 Mar–19 Apr	Anteros Arts: The Art & Soul of Paper	5
11 Mar–6 Apr	Mandell's Gallery : The Art & Soul of Paper	12
Mar–20 Apr	Gallery at NUA : Washi : The Art of Japanese Paper	26
21 Mar–13 Apr	Norwich Arts Centre : Breadcrumbs	19



Art in Norwich : at a glance

27 March	NCAS Talk : Working with Artists & Animals Steve Baker : The Curve in The Forum	21
30 Mar–29 Sept	Norwich Castle : Gerard Stamp	25

APRIL

2–21 April	OUTPOST : Fiona Mackay, Syntax	28
6 April–29 May	Norwich Cathedral Library Centenary	21
8 April–8 May	The Assembly House Art Show 2013 : ART ALIVE!	8
15–21 April	The Forum : Less is More	9
20 Apr–25 May	Live Art Club : Norwich Arts Centre	19
23–28 April	The Forum : Norfolk & Norwich Open Studios Taster Exhibition	10
23 April	NCAS/SfN/NUA Talk by Mariele Neudecker : 15 NUA Lecture Theatre, Duke Street	15
26 Apr–1 June	Anteros Arts : Fyffe Christie	5
30 Apr–16 Mar '14	Norwich Castle : John Sell Cotman	25
30 Apr–25 May	Gallery at NUA : 'Lynda Morris : Dear Lynda'	26

MAY

2–26 May	OUTPOST: Matthew Lutz-Kinoy	28
3–4 May	The Forum : Artists' Book Fair	10
4–25 May	Mandell's Gallery : Paul Smith	12
10–26 May	NN Festival : Caroline McCarthy	17
10–26 May	NNFestival : Undercroft : Rhona Byrne	17
11 May–29 June	Assembly House : The Print Show 2013	8

Jocelyn Wickham Yellow Jug and Lime, oil

at a glance : March '13–August '13

MAY cont.

11/12 May	NCAS : Trip to Roche Court Sculpture Park & tour of Salisbury Cathedral	15
11 May–2 June	Norwich Castle : Brian Griffiths	18 & 24
11 May–8 Sept	Norwich Castle: Shortcuts & Digressions	24
17 May–29 Sept	Houghton Hall, Norfolk : Houghton Revisited	16
18–20 May	NNFestival at EPIC studios : Sven Werner	18
18–19 May	NNFestival at EPIC studios : Funki Porcini	18
19–26 May	The Forum: Norwich 20 Group Show	22

JUNE

1 June–6 July	Norwich Arts Centre : Deb Hoy	19
1–14 June	Mandell's Gallery : The East Anglian Group of Marine Artists	13
2–21 June	OUTPOST : Rehana Zaman	28
4–15 June	Norwich Cathedral : Norwich & District Photographic Society Exhibition	21
16–29 June	Mandell's Gallery : Cavendish Morton	13
18–29 June	Norwich Cathedral : NUA Bishop's Art Prize	21
23 June–7 July	20 Group Next the Sea : Salthouse Church	23
24 June–31 July	Anteros : Raised Awareness TATE+ Exhibition	6
24–29 June	St Margaret's Church : Naked in Norwich	4
25 June–2 July	Gallery at NUA : 2013 Degree Shows	26

Art in Norwich : at a glance

JULY

2–13 July	Norwich Cathedral: Schools Festival Exhibition	21
2–21 July	OUTPOST : Andy Parker	28
4 July–29 Aug	Assembly House : COAST	8
5 July–27 July	Mandell's Gallery : Will Teather	13
8–14 July	The Forum : Lonely Arts Club	10
14 July	NCAS AGM : Bolwick Hall, Marsham : 12pm	15
15–21 July	The Forum : Breckland Artists	10
15 July–24 Aug	Norwich Arts Centre : TARDIS exhibition	19
17–28 July	Norwich Cathedral : Norfolk & Norwich Art Circle Exhibition	21

AUGUST

2 Aug–1 Sept	Leviathan : Norwich Cathedral	21
3–24 August	Mandell's Gallery : Summer Show	13
4–10 August	The Forum : Norfolk Watercolour Circle	11
23 Aug–5 Oct	Anteros Arts : John Bardell	5

Advance notice

9–21 September	18th Norwich Print Fair : St Margaret's Church, St Benedict's - details on www.norwichprintfair.co.uk	
24 Oct–2 Nov	Stew presents : Print Odyssey	32

Art in Norwich is produced by **The Shift** as a companion to **Music in Norwich**, a roundup of concerts and music events in Norwich which you can find on www.musicinnorwich.org.uk. More information about The Shift (Culture Shift, Design Shift and Digital Shift) can be found at www.theshiftnorwich.org.uk, where you can also find an overview of Norwich culture.

About Art in Norwich

This programme is the result of a collaboration between a number of organisations who promote visual art, public art, craft and architecture in Norwich and area. The aim is to gather visual art listings in one place so that they are easy to find and also to offer an overview of art activity throughout the year. The Art in Norwich Forum is a self-supporting partnership of visual art groups and organisations active in Norwich and the surrounding area.

We hope you will keep this booklet safe as it covers six months' programming. Because of space limitations and lots going on, exhibition and event details are brief but you can find out more from individual organisations and venues from their own websites. See page 35 for contact and venue details. Please also visit our website at www.artinnorwich.org.uk where you can download a pdf of this programme.

Important: All information is subject to change - please check with individual organisations before travelling to an event.

Image: David Jones, Wingnut Tree, Tombland Alley, Autumn



Anteros Arts Foundation



Anteros Arts Foundation is an arts venue in the city centre. We are committed to developing the arts, offering art courses and tuition, as well as presenting professional exhibition space.

The evening classes, life drawing, weekend classes and masterclasses are all designed to develop individual creativity as well as technical skills. Inspiring venues and small classes provide a unique atmosphere in which to learn and explore ways to make art, away from the demands of daily life.

Exhibitions

18 January–2 March, 2013
RICHARD WADE

Made up from hybrid elements drawn from the environment, Richard Wade's work primarily consists of landscapes and objects, featuring figures and animals that appear to be swallowed up and engulfed by their dreamscape backdrops.

11 March–19 April, 2013
THE ART AND SOUL OF PAPER

The International Association of Hand Papermakers and Paper Artists (IAPMA) is the world leading organisation for paper artists.

26 April–1 June, 2013
FYFFE CHRISTIE

Fyffe Christie (born 2 February 1918, died 6 March 1979) was a British figurative artist and mural painter. His great murals have a 'powerful simplicity' and he is particularly remembered for his commission based mural '*Christ Feeding the People*'.





Courtyard at Anteros

24 June–31 July, 2013

RAISED AWARENESS TATE+ EXHIBITION

An exhibition of artists' drawings collected and curated by Bill Woodrow with hands-on interpretation for blind and partially-sighted visitors.

23 August–5 October, 2013

JOHN BARDELL STAINED GLASS WORKS

John Bardell is one of the region's best known stained glass makers.

In advance

Late November, 2013

CHRISTMAS CRAFT FAIR

A handmade craft fair with a variety of quality products for sale.

November–December, 2013

SCHOOLS PORTRAIT PRIZE

This popular exhibition showcases the artistic talents of our region's youngsters.



**Anteros Arts Foundation, 7–15 Fye Bridge Street
Norwich Norfolk NR3 1LJ Tel: 01603 766129**

Art 18/21 Gallery



Art 18/21 Gallery and Art Advisers. The Gallery specialises in Modern and Contemporary British and South-Asian Art. Housed in one of Norwich's oldest buildings the Gallery hosts changing exhibitions and holds collections of secondary market artworks.

We work closely with established artists such as Maggi Hambling, Colin Self and Matthew Lanyon and young emerging artists Alec Cumming, Isabel Rock and Mitali Shah. Our collections include works by Alan Davie, John Hoyland and other recognised artists.

Exhibitions



Alec Cumming

Gallery Open: Tues-Sat 10am-5pm and by appointment.
Directions: Opposite the main entrance to Norwich Cathedral in the undercroft below Tombland Antiques.

Augustine Steward House, Norwich NR3 1 HF
Tel: 0044 (0)1603 763345 Mobile: 07879 673419
Email: laura@art18/21.com www.art1821.com



Assembly House and Noverre Gallery & Shop



The Assembly House is a proud supporter of the Arts, and exhibitions, concerts, lectures and plays take place here on a regular basis. The wonderful **Noverre Gallery & Shop** sells British art and crafts including prints, ceramics, jewellery, cards and wrapping paper and is curated by Creative Arts Manager Lottie Day. Occasionally the gallery operates as a pop-up studio.

A variety of exciting exhibitions is planned this year and further information on all arts events can be found in the quarterly Assembly House Arts Programme & Brochure, available at the House and online at: www.assemblyhousenorwich.co.uk.

All exhibitions listed are open from 9am to 5pm, Monday to Saturday, admission free.

Exhibitions

Monday 8 April–Wednesday 8 May, 2013

THE ASSEMBLY HOUSE ART SHOW 2013: ART ALIVE!

Curated by Yvonne and John Millwood, this major biennial art show will feature new work by more than 125 artists from Norfolk, Suffolk and Cambridgeshire, including installations, art textiles, sculpture, pottery, paintings, photographs and video.

Saturday 11 May–Saturday 29 June, 2013
PRINT SHOW 2013

Featuring work from accomplished printmakers from across the country, this annual show includes prints by Pam Grimmond, Tom Frost, Linda Farquharson, Sally Elford, Rob Barnes and Vicky Oldfield.



Pam Grimmond

Thursday 4 July–Thursday 29 August, 2013
COAST

An exciting exhibition looking at where the sea meets the land, Coast features an eclectic mix of artists including printmakers, sculptors and painters. Includes work by Clair Curtis, Penny Bhadresa and Stephen Henderson.

The Assembly House also has a welcoming café/bar and restaurant and is renowned for its coffee, cakes and traditional afternoon tea. Adjacent to Norwich Theatre Royal, the pre-theatre dinner is also very popular.

The Assembly House, Theatre Street, Norwich, NR2 1RQ
Tel: 01603 626402. Registered charity no: RCN 1111391.

The Forum



The Forum, right in the heart of Norwich city centre, is home to a year-round programme of FREE exhibitions, activities, markets and digital shows. It's also a great place to grab a coffee, a pizza or, of course, to explore the busiest public library in the UK.

The Forum's website has information on day-to-day events going on in the huge, glass Atrium, and in the Fusion digital gallery. There are also courses, classes and talks going on in the library and regular music and conversation gatherings in Café Bar Marzano.

You can also follow The Forum on Twitter – @TheForumNorwich – and Facebook – The Forum, Norwich – for updates, images and videos.

This year's programme of events is already packed to the gunnels with an eclectic mix of art, literature, dance, music, sport, nature, history and heritage. The Forum is open seven days a week so drop in anytime and see what's going on.

Exhibitions

15–21 April, 2013

LESS IS MORE

Mary Mellor
Derek Morris
Vanessa Pooley
Andrew Schumann



Four prominent British artists at the height of their creative careers, who live and work in Norfolk, have come together to present their work in a joint exhibition.

In this show, they celebrate the maturity of their work, refined and distilled through decades of paring back to the essence of their ideas and thinking.

"At this stage in our career we take out the extraneous elements in our work that take away from what it is we are trying to say. What you learn from experience is the old adage that less is more – and nothing could be more true about the work in this exhibition," Vanessa Pooley.

23-28 April, 2013

NORFOLK & NORWICH OPEN STUDIOS TASTER EXHIBITION

Get a taste of what's in store at this year's Norfolk & Norwich Open Studios which runs from 25 May–9 June. Work from a vast range of artists from every corner of the county is brought under one roof in The Forum Atrium to celebrate the vibrancy of visual arts in Norfolk.

More info: www.nnopenstudios.org.uk (live early April)

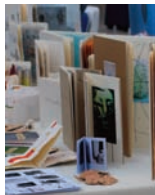


3–4 May, 2013

TURN THE PAGE ARTISTS' BOOK FAIR

This annual event in The Forum's Atrium is a selling platform for artists who are creating work that is inspired by the structural and conceptual properties of the book form.

More info: www.turnthepage.org.uk



Turn the Page

19–26 May, 2013

NORWICH 20 GROUP SHOW

The Norwich Twenty Group of artists was formed in 1944 – now the membership has grown to more than seventy. This selling exhibition is an opportunity for members to show in a high-profile space in the city centre.

More info: www.norwich20group.co.uk



*Rob Woods
'Peace Warrior'*

Ros Newman, NNOS 13 artist



8–14 July, 2013
LONELY ARTS CLUB

The Lonely Arts Club members are regular exhibitors at The Forum. They are a mixed art group based in Norwich, Norfolk, including painters, constructivists, sculptors, printmakers and photographers.

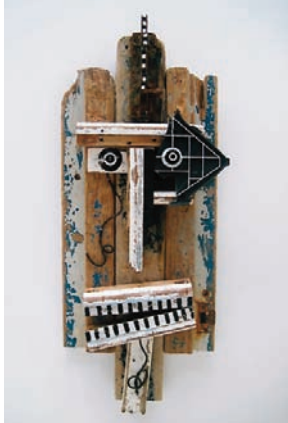
More info: thelonyartsclub.org.uk

15–21 July, 2013
BRECKLAND ARTISTS

Breckland Artists are a diverse group of fifteen artists, living and working in the south west of the county, who originally got together after taking part in Norfolk Open Studios.

Members have been included in, and won awards in, major national and regional exhibitions with their work seen in many galleries in East Anglia and beyond.

More info: www.brecklandartists.com



Lonely Arts Club



Breckland artists

4–10 August, 2013
NORFOLK WATERCOLOUR CIRCLE

This is the annual exhibition of members' work. The Norfolk Watercolour Circle was formed in Norwich in 1961. Their objectives remain the same today: to bring together all those who are interested in promoting the fine art of watercolour, by way of exhibitions, talks, demonstrations and constructive criticism.

More info: norfolkwatercolourcircle.com



Norfolk Watercolour Circle

Mandell's Gallery



Mandell's Gallery is one of Norwich and Norfolk's most respected commercial art galleries. Mandell's Gallery was founded in 1965. Originally specialising in 19th century Norwich School painters, the gallery has expanded greatly and now has a diverse collection of traditional and contemporary art, offering opportunities for many new and local artists as well as more established names. You are welcome to view the collection at the art gallery, situated on the beautiful and historic street of Elm Hill, near Norwich Cathedral.

Exhibitions

11 March–6 April, 2013

THE ART AND SOUL OF PAPER

The Art and Soul of Paper is associated with *Washi: The Art of Japanese Paper* which is simultaneously held at Norwich University of the Arts and Anteros.

The Art and Soul of Paper represents three paper exhibitions, two artist talks and a workshop. Mandell's Gallery will exhibit over 40 works from paper makers and artists all over the world.

4 May–25 May, 2013

PAUL SMITH – WITHIN SIGHT

An exhibition of work created over two years by an emerging artist, inspired by the natural world, a reflection of his personal thoughts and feelings within his work. Paul Smith has created a stunning exhibition of never before seen work.



1 June–14 June, 2013

THE EAST ANGLIAN GROUP OF MARINE ARTISTS

The Group began in 1979 with 6 artists all with a passion for depicting the maritime scene of East Anglia. The group has gone from strength-to-strength with a steady improvement in standards and diversity.

16 June–29 June, 2013

CONVERSATIONS WITH CAVENDISH MORTON Book Launch

A book launch of Bella Janson's book – Conversations with Cavendish Morton. With a small collection of his works on display.

5 July–27 July, 2013

WILL TEATHER

British artist Will Teather is well-known for creating artworks that combine an unusual imagination with an obsessive attention to detail. *"In the spirit of magical-realist fiction, the storytelling explores the indefinite space between reality and fiction, horror and humour, fantasy and fact."*

3 August–24 August, 2013

MANDELL'S GALLERY SUMMER SHOW

A mixed exhibition at Mandell's Gallery to showcase all the artists we represent at Mandell's Gallery.

Mandell's Gallery, Elm Hill, Norwich, Norfolk NR3 1HN,
01603 626892, info@mandellsgallery.co.uk
www.mandellsgallery.co.uk

Opening hours 10am–5pm Monday–Saturday No
admittance charge.



Will Teather, 'The Moon has lost his memory'



The Norfolk Contemporary Art Society, founded in 1956, is a charitable association that promotes the interests of contemporary art in Norfolk. It has acquired its own collection of paintings and sculpture, which form the basis of the holdings in post-war art in the Norwich Castle Museum & Art Gallery. NCAS has also raised funds for public sculptures and has an on-loan collection of local artworks.

Supporting local art in many ways, NCAS mounts a lively programme of monthly events, mostly in Norwich, which includes lectures by artists, critics and art historians, gallery visits, auctions, private views and parties. They also curate exhibitions, including a large biennial open show in the Forum.

Exhibitions, Visits and Talks

Wednesday 27 March 2013, 7.30pm
The Curve, The Forum, Norwich

WORKING WITH ARTISTS AND ANIMALS : Illustrated talk by Steve Baker followed by book launch



Drawing on examples from his newly published book, *Artist | Animal*, Steve Baker will discuss how contemporary artists (including a couple of Norwich-based artists) have found innovative and sometimes controversial ways to explore humanity's continuing fascination with the power of animal imagery.

Steve Baker is Emeritus Professor of Art History at the University of Central Lancashire, and is the author of several other books. He is an artist-member of Outpost (an artist-run gallery in the city) and a trustee of NCAS.

Tickets: Members £2.50, non-members £4 (drinks available at the book launch)

Saturday 11/ Sunday 12 May, 2013
TRIP TO ROCHE COURT SCULPTURE
PARK & GUIDED TOUR OF
SALISBURY CATHEDRAL



Roche Court

Roche Court is a sculpture park and educational centre where sculpture work is shown inside and out for public benefit. The Centre represents various artists' estates including Barbara Hepworth, Kenneth Armitage and Ian Stephenson. The gallery runs a changing programme of exhibitions.

Depart: Notcutts 8am Saturday, return by 9pm Sunday
Coach trip, park entry and tour, approx £50. Hotel TBA

Please contact Janey Bevington Tel 01603 616376, email
J63bevington@btinternet.com if you are interested in
joining the trip. Priority given to members.

Tuesday 23 April 2013, 7.30pm
NUA Lecture Theatre, Duke Street
Norwich

MARIELE NEUDECKER

An illustrated talk about the artist's
proposed sculpture for Palace Plain in Norwich.

Mariele Neudecker is a distinguished and increasingly successful artist both nationally and internationally. Of German origin, she lives and works in Bristol.



Artist's maquette for
commission at Palace Plain

She employs a variety of media including film, video, photography, installations and sculpture, all steeped in the German Romantic tradition, making mysterious and poetic works of great imaginative power and visual grandeur. She was chosen by the charity Sculpture for Norwich to develop a proposal for a work for Palace Plain in Norwich, celebrating the Norwich School of Artists. She will be talking about her plans for this as well as giving an overview of her works to date.

This is a joint event presented by Sculpture for Norwich, NCAS, Norwich Society and NUA.

Sunday 14 July 2013, 12pm
Bolwick Hall, Marsham, Norwich NR10 5PU
NCAS ANNUAL GENERAL MEETING

Formal business meeting followed by buffet lunch from 1pm. All welcome, members and non-members

Tickets: £10 Book by emailing J63bevington@btinternet.com

For more details of events as they become available,
check the website www.n-cas.org.uk.

NCAS events are open to both members and non-members. Members receive our programme and regular newsletter by post, and enjoy reduced rates to talks, plus excursions, invitations to private views, and other events. Membership details are on the website.

Norfolk and Norwich Festival

Photo: Rod Penn



Norfolk & Norwich Festival 2012 launch on Millennium Plain

Norfolk & Norwich Festival is the international arts festival for the East of England and 4th largest in the country. Between 10 and 26 May 2013, leading companies, performers and visual artists from across the globe will descend on Norwich and Norfolk to create and take part in one of the most vibrant multi-art form festivals in the UK, transforming the city into an enormous stage.

For more detailed information of the full 2013 Visual Arts programme as well as music, theatre, outdoor arts, dance, cabaret and much more, please visit www.nnfestival.org.uk

17 May–29 September, 2013
HOUGHTON REVISITED

Houghton Hall, Norfolk

Houghton Revisited is a once-in-a-lifetime opportunity to see one of the most famous art collections of the eighteenth century, including works by Rembrandt, Van Dyck, Rubens and Poussin, in their original setting for the first time in over 230 years.

Originally owned by Britain's first Prime Minister Sir Robert Walpole, the famous art collection was sold to Catherine the Great in 1779 to adorn The Hermitage State Museum in St. Petersburg. Don't miss the chance to see over 70 paintings from the collection.

Tickets £18 (£12.50/£10) + family ticket available
Open Wednesday–Sunday 11am–6pm (last admission 5pm)
Advance booking recommended



Friday 10–Sunday 26 May, 2013

CAROLINE MCCARTHY

Various city centre locations

Throughout her career crisp packets, plastic bags and supermarket packaging have been some of the raw materials used by McCarthy. In response to a culture of mass production, her work investigates the space between surface veneer and the concrete materiality of things.

Maps of the city will accompany this project to create a treasure hunt experience within an otherwise familiar landscape – available from the Festival information point (in The Forum) or website.

Free entry

Thursday 2–Sunday 26 May, 2013

MATTHEW LUTZ-KINOY

WERK IS FREE /BE FREE! MAY DAY

OUTPOST, Tombland, Norwich

Coinciding with the May Day and Worker's Day holidays, the exhibition and opening night live performance will address questions of worker's rights, and the figure of the artist.

Free entry open daily 12–6pm

Preview opening: Wednesday 1 May, 6–9pm



Friday 10–Sunday 26 May, 2013

RHONA BYRNE

IT'S ALL UP IN THE AIR

The Undercroft, Norwich

Rhona Byrne makes sculptural objects and environments that are often focal points for events and social interaction. *It's all up in the Air* is a monumental black cloud assembled from modelling balloons. Immediately recognisable as a comedic emblem of misery and pessimism, this object has had several lives acting as both a site-specific outdoor sculpture and a travelling host to happenings, events and social encounters.

Free entry open daily 12–6pm

Saturday 11 May–Sunday 2 June, 2013

BRIAN GRIFFITHS

THESE FOOLISH TRAVELS

Castle Keep, Norwich Castle

In partnership with Norwich Castle Museum & Art Gallery, see page 24 for details.

Saturday 18–Monday 20 May, 2013

SVEN WERNER

TALES OF MAGICAL REALISM: PART 2

EPIC Studios, Norwich

Following its sell out success at Sonica 2012, *Tales of Magical Realism: Part 2* is a series of miniature peep-shows. Composed like film scenes, this solo experience invites you on an illusion-fuelled intimate journey to darkly poetic places.

Performance runs: This piece is a 6-hour interactive installation. Audience journey time is c. 50 minutes

Tickets £5, daily 2–8pm

"...a rare chance to completely immerse yourself in art." BBC News Scotland

A Cryptic commission for Sonica, supported by the Esmée Fairbairn Foundation



Saturday 18–Sunday 19 May, 2013

FUNKI PORCINI

CITY

EPIC Studios, Norwich

Conceived by the musician and film maker James Braddell, *City* is a work in progress, an interactive installation and experiment in both cinema and performance. Take this unique opportunity to catch *City* as the piece develops.

Free entry

Festival dates 10 to 26 May 2013 – booking now, see www.nnfestival.org.uk

Norwich Arts Centre



Norwich Arts Centre is a multi-arts venue, delivering a programme of live music, theatre, live art, comedy, live literature, visual art, and courses. Our exhibitions are wheelchair accessible, and free entry. Please check our website www.norwichartscentre.co.uk for more details.

Exhibitions

Norwich Arts Centre café gallery

21 March–13 April 11am–4pm Monday–Saturday

BREADCRUMBS

Students of the BTEC Extended Diploma in Art & Design (Interactive Media) at City College Norwich present an exhibition that invites you to follow the clues in this experiment in non-linear visual story-telling.

Main gallery Norwich Arts Centre
10am–6pm Monday–Saturday

20 April–25 May, 2013

LIVE ART CLUB

Photographs exploring how a live performance can be represented in a single still image, addressing the point where documentation meets narrative photography.

1 June–6 July, 2013

CONDUCTOR: DEB HOY

Raw materials copper and graphite create layered images alluding to planetary shifts and subtle energies. With the artist as conduit, intuitive marks become scores to describe intangible experiences.

15 July–24 August, 2013

SHINY KING, SMILING BUT SAD INSIDE: TARDIS

A collection of artworks inspired by picture books, reflecting children's imaginings and ideas. Celebrating the sixth year of the successful TARDIS Studio, the young artists and thinkers of Chapel Break Infant School present their new artworks.

Exhibitions & Education Coordinator: Holly Rumble,
holly@norwichartscentre.co.uk

Norwich Arts Centre, 51 St Benedicts Street, Norwich
NR2 4PG Tel: Box office 01603 660352



Norwich Cathedral



Located in the heart of Norwich in the beautiful Cathedral Quarter, Tombland area of the city, **Norwich Cathedral's Hostry Visitor and Education Centre** hosts a rolling programme of international, national and local exhibitions within the light and spacious exhibition hall.

As well as seeing the exhibitions you can visit the awe-inspiring Cathedral, view the largest monastic cloister in England, enjoy the tranquillity of the Cathedral Close, stop for a light lunch in the Refectory and visit the Library with its collection of over 30,000 books!

Exhibitions

The exhibitions are in the Hostry Visitor & Education Centre. Opening hours are Monday to Saturday 9.30am–4.30pm and Sunday 12pm–3pm. Exhibitions are open to all and admission is free.

Wednesday 13 February–Monday 1 April, 2013
TED HARRISON EXHIBITION – STATIONS OF THE CROSS: FORCES OF CREATION

The 15 paintings being shown can be seen in two different ways – both in sequence as the '*Stations of the Cross*' and fitted together to form one large picture celebrating the on-going forces of nature.

Writer and artist Ted Harrison is a former BBC Religious Affairs correspondent and Radio 4 presenter. He divides his time between his homes in Kent and Shetland.



Saturday 6 April–Wednesday 29 May, 2013
NORWICH CATHEDRAL LIBRARY CENTENARY
EXHIBITION

In 1913, the Dean & Chapter library was moved into the refurbished upper south range of the cloister. This exhibition, a hundred years on, looks back to see what life was like in and around the Cathedral.

Tuesday 4 June–Saturday 15 June, 2013
NORWICH AND DISTRICT PHOTOGRAPHIC SOCIETY

The Norwich and District Photographic Society is one of the oldest such organisations in the country and traces its origin to the middle years of the nineteenth century. The Society's Annual Photographic Exhibition of work by members includes colour and monochrome prints and digital images.

Tuesday 18 June–Saturday 29 June, 2013
NORWICH UNIVERSITY OF THE ARTS – BISHOP'S ART PRIZE

The Bishop's Art Prize is an annual event established by the Bishop of Norwich, inviting final year students at Norwich University of the Arts to submit work in response to a specific theme. This year the theme is Darkness and Light.



Hostry Gallery

Tuesday 2 July–Saturday 13 July, 2013
SCHOOLS FESTIVAL EXHIBITION

A collaborative presentation of art from Norfolk schools co-ordinated by Norwich School.

Wednesday 17 July–Sunday 28 July, 2013
NORFOLK AND NORWICH ART CIRCLE

This annual exhibition displays the work of current members from all over East Anglia.

Friday 2 August–Sunday 1 September, 2013
LEVIATHAN – TOM ASHWORTH AND PHIL COLES

An exhibition of sculptures, paintings and illustrations in response to the diverse forms and behaviours of whales and dolphins, designed to celebrate, educate and inspire.

Please visit www.cathedral.org.uk for more details

Norwich 20 Group



Joanna Reynolds 'Our life panoramas 2'

The **Norwich Twenty Group** of artists was formed in 1944. Now after almost seventy years the membership has grown to over seventy. These include painters, sculptors, installation and conceptual artists, print-makers and photographers. Initially the founding members were mainly Norwich-based, many associated with the Norwich School of Art and other local educational institutions.

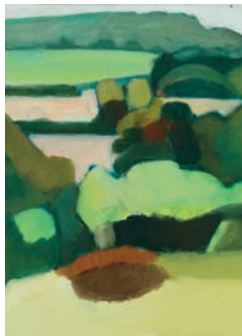
Today we are spread all around the county and as from the earliest days include many artists with national reputations. The group aims to put on regular exhibitions, has a monthly meeting, and a weekly life workshop.

Exhibitions

Sunday 19 May–Sunday 26 May, 2013
The Forum, Millennium Plain, Norwich, NR2 1TF
NORWICH TWENTY GROUP – SPRING SHOW

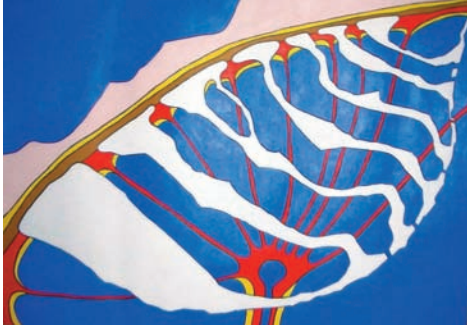
New work from members of the Norwich Twenty Group.
Open daily 10am–5pm

John Midgely 'Found Formation'



John Rance 'Fractured Union'





Richard Cleland 'Thing 2'

Sunday 23 June–Sunday 7 July, 2013
Salthouse Church, Salthouse, north Norfolk
TWENTY GROUP NEXT THE SEA

Take a trip out of town to see magnificent work by the group in one of Norwich's finest churches, well-known for the art exhibitions it hosts.

Daily 10am–5.30pm

St Nicholas' Church, Cross Street, Salthouse, Norfolk, NR25 7XH is off the main A149 Norfolk Coast Road and can be reached by the Coast Hopper Bus which runs from King's Lynn to Cromer – call North Norfolk Tourism Information Centre 01263 512497 for directions or see www.visitnorthnorfolk.com.

Monday 24 June–Saturday 29 June, 2013
St Margaret's Church, St Benedict's, Norwich
NAKED IN NORWICH 4

The annual show of the 20 Group's life drawing workshop which is held at Wensum Lodge on Thursday evenings and gives 40 plus artists the opportunity to display their work. This year the show is dedicated to the memory of former attendee Cristina Ivey who died last summer.

Open daily 10am–5pm



Free entry to all
 exhibitions

Bridget Heriz
'Standing figure
with bird'
 2012

Norwich Castle Museum & Art Gallery



Built by the Normans as a Royal Palace 900 years ago, **Norwich Castle** is now home to some of the most outstanding collections of fine art including the Norwich School, archaeology and natural history. Alongside its own exhibitions Norwich Castle hosts a regular programme of touring shows from major galleries and museums including Tate, V&A, British Museum, the Hayward Gallery and many more. This summer, the Castle collaborates with the Norfolk & Norwich Festival to commission new artwork and launch associated exhibitions.

Exhibitions

Saturday 11 May–Sunday 2 June, 2013
Castle Keep

THESE FOOLISH TRAVELS

As part of the Norfolk & Norwich Festival artist Brian Griffiths will colonize the historic Castle Keep with an epic new installation of tents, temporary dwellings, tarpaulins and kit-bags. Playing on the historic sense of pageantry in the Castle whilst recalling personal lived experience, from wedding parties to military manoeuvres the installation presents an absurdist rendition of space and time, executed with Griffiths' customary mix of poignancy and humour.



Special Exhibition Galleries

Saturday 11 May–Sunday 8 September
SHORTCUTS & DIGRESSIONS:
CONTEMPORARY SCULPTURE FROM
THE ARTS COUNCIL COLLECTION

Curated by Brian Griffiths to complement his work in the Castle Keep this exhibition will explore how sculpture can use and embody *Shortcuts*, a term which can suggest direction, duration, speed, narrative, displacement,



Adam Chodsko, Untitled Stile (teenage version), 1992, Arts Council Collection, Southbank Centre, London.

efficiency, possible clarity and potential laziness. The selected works also efficiently shortcut to different environments and activities. They become a way of mapping our complex relationships to objects and how they represent and shape our lives.

Select: From the Arts Council Collection

COLMAN ART GALLERIES

Newly redisplayed, these galleries house the museum's world famous collection of Norwich School paintings by John Crome, John Sell Cotman and their contemporaries.

Saturday 30 April, 2013–Sunday 16 March, 2014

Colman Watercolour Galleries

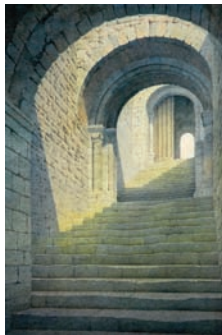
JOHN SELL COTMAN: A PICTURESQUE TOUR OF NORFOLK & NORMANDY

Cotman's architectural watercolours, drawings and prints are technically astonishing in their clarity, detail and accuracy. This exhibition aims to reveal his unrivalled skills as an architectural draughtsman, as well as the depth of his knowledge and enthusiasm for original research.

The art programme at Norwich Castle is supported by the East Anglia Art Fund – a local charity dedicated to bringing great art to Norfolk.
www.eastangliaartfund.org.uk



© Gerard Stamp



Gerard Stamp
Castle Rising Steps, watercolour

Saturday 30 March–
Sunday 29 September, 2013
Colman Project Space

GERARD STAMP: CONQUEST, NORFOLK'S NORMAN LEGACY REFLECTED IN WATERCOLOUR

An exhibition of new watercolours by artist Gerard Stamp, reflecting his enduring passion for Norfolk's Norman architecture and the work of John Sell Cotman.

TIMOTHY GURNEY GALLERY

Currently showing highlights from the museum's Modern and Contemporary Art Collection. Paintings, drawings, prints and sculpture from Bomberg and Sutherland to Hambling and Hoyland.

For information on related talks and events please see our website or call – general enquiries 01603 493625 (Monday–Friday) bookings and information 01603 495897

Opening times: Peak season (2 July–30 September)
Monday–Saturday 10am–5pm Sunday 1–5pm
Rest of year closing time is 4.30pm



Supported using public funding by
**ARTS COUNCIL
ENGLAND**

The Gallery at NUA



The Parkes Collection of Japanese Paper, Royal Botanic Library, Kew.

The Gallery at Norwich University of the Arts presents a varied programme of internationally recognised artists, designers, curators and media practitioners.

Exhibitions

12 March–20 April, 2013

The Gallery at NUA hosts

WASHI: THE ART OF JAPANESE PAPER

An exhibition showcasing Japanese handmade paper from the 19th century Parkes Collection and from the Second Millennium Washi Committee's collection of contemporary washi with responsive works by selected international papermakers.

30 April–25 May, 2013

'LYNDA MORRIS: DEAR LYNDA...'

The Gallery at NUA is also proud to present *'Lynda Morris: Dear Lynda...'*, a fitting homecoming to celebrate the ongoing work of curator, art historian, writer, patron, muse and Professor, Lynda Morris. Morris' practice and knowledge is illustrated through the display of an impressive personal 'archive' which relates directly to exhibitions she has organized and curated, many of which took place in and around the Norwich Gallery on St George's Street. Morris' material includes gifts, ephemera, posters, catalogues, articles and artworks. In partnership with Norfolk & Norwich Festival.

25 June until 2 July, 2013

2013 DEGREE SHOWS

Another date to mark in your calendar, students' degree show final work exhibited around the university building.

For news and events find us on Facebook [NUAgallery](#), follow [#nuagallery](#) or visit our blog [galleryatnua.tumblr.com](#).

The Gallery at Norwich University of the Arts,
St George's Street, Norwich NR3 1BB

Open Tuesday–Saturday, 12–5pm Admission Free
[www.nua.ac.uk](#) Tel: 01603 610561

POSTGRADUATE COURSES

All MAs are available on a full and part time basis



NORWICH
UNIVERSITY
OF THE ARTS

Curation
Communication Design
Fashion
Fine Art
Moving Image and Sound
Photography*
Textile Design

*Subject to validation

For postgraduate Open Days see:
www.nua.ac.uk/opendays

**"I HAVE WORKED WITH A
HUGE NUMBER OF TALENTED
ARTISTS AND THINKERS.
THE RESOURCES AND
TUITION ARE OUTSTANDING."**
Simon Welfare, MA Fine Art

OUTPOST



OUTPOST Gallery is an artist-led space committed to the uncompromising presentation of contemporary art. The gallery has a core programme of 11 exhibitions per year, opening on the 1st of each month (gallery closed in January). In parallel OUTPOST initiates regular offsite projects, artist talks, film screenings and live events.

OUTPOST is run by a voluntary steering committee and supported by an artist membership. This membership contributes to a vibrant community of artists in Norwich, which OUTPOST seeks to promote alongside the highest quality of national and international artists.

Exhibitions

The Gallery is open 12-6pm daily

Opening exhibitions 1st day of each month

OUTPOST OFFSITE AT KETTLE'S YARD, CAMBRIDGE

1 March-14 April, 2013

'Congratulations, you are the most recent visitor'

Group show at Kettles Yard, Cambridge

AT OUTPOST GALLERY, TOMBLAND

2-21 March, 2013

'BCC #11, IN DEFENCE OF THE POOR IMAGE', an exhibition by Victor Wang materialising texts written by Hito Steyerl

2-21 April, 2013

SYNTAX, Fiona Mackay

2-26 May, 2013

WERK IS FREE/BE FREE! MAY DAY

Matthew Lutz-Kinoy

2-21 June, 2013

REHANA ZAMAN

2-21 July, 2013

ANDY PARKER



OUTPOST Gallery, 10b Wensum Street, Tombland,
Norwich, Norfolk NR3 1HR Tel: 01603 612428

Sainsbury Centre for the Visual Arts



The Sainsbury Centre for Visual Arts is the first public building designed by celebrated architect Lord Norman Foster and houses the collection of Sir Robert and Lady Sainsbury, which features outstanding works of world and modern European art.

As well as inspirational architecture the Centre is a renowned public art museum with a combination of permanent collections, world-class temporary exhibitions, events, talks, workshops, clubs and outreach programmes for all ages, along with a high-quality shop and restaurant. **Open Tuesday–Sunday, admission is free.**

Exhibitions

From Saturday 9 March, 2013

CHANGING LANDSCAPES: THE ART LAB

The Link Corridor

In addition, the second stage of last year's *Changing Landscapes: The Art Lab* will be on display in the Link Gallery. The Art Lab is an experimental venture in which we explore different ways of combining art-works, collections, research projects, learning resources and interactive and practical art-making opportunities in response to the theme of *Changing Landscapes*.



World Art Games

Did you know that the Sainsbury Centre has...

- *Objects from every continent on the planet*
- *The biggest collection of Francis Bacon in N. Europe*
- *Drawings by Picasso and portraits by Modigliani*
- *Sculptures & drawings by Henry Moore & Alberto Giacometti*
- *Degas' 'Little Dancer' bronze sculpture*
- *The Lisa Sainsbury Ceramics Collection*
- *One of the best Art Nouveau collections in the UK*
- *Restaurant overlooking the Sculpture Garden*
- *An award-winning shop*

From Saturday 9 March, 2013

CHANGING LANDSCAPES: Ackroyd & Harvey, *Beuys' Acorns*

Sculpture Garden

In 2007 artists Ackroyd & Harvey gathered and germinated hundreds of acorns from Joseph Beuys' seminal artwork *7000 Oaks* in Kassel, Germany. The 250 surviving saplings make up *Beuys' Acorns*, an on-going project dedicated to nurturing the plants in tandem with a series of public conversations. The growing trees, displayed in the Centre's Sculpture Garden, act as a catalyst for discussion about humankind's relationship with nature and growing concerns about environmental change.



From Saturday 9 March, 2013

CHANGING LANDSCAPES: Ackroyd & Harvey, *Stranded* Next Modern, in the Modern Life Cafe

Stranded is a six metre long crystal-encrusted skeleton of a minke whale. Recovered from the coast of Skegness, Lincolnshire, the skeleton was cleaned and then immersed in a highly saturated alum solution, encrusting the skeleton with a chemical growth of ice-like crystals. The artwork raises issues of the dramatic changes in the chemistry of the planet's oceans and brings awareness to the threat of coral reefs and the marine food cycles. It was commissioned for Cape Farewell's international touring exhibition created in partnership with the Natural History Museum in 2006 which sought to deepen understanding of climate change through contemporary art.

THE FIRST MODERNS: FROM NATURE TO ABSTRACTION Modernisms Mezzanine

The First Moderns showcases the Sainsbury Centre's Collection of Art Nouveau, alongside loans from major collections, in a display exploring the progression of Art Nouveau from natural to more abstract, geometric forms. The exhibition highlights the role of artists and designers of the style in the rise of Modernism and offers an opportunity to see the Collection in a new way.

Permanent exhibition

THE ROBERT AND LISA SAINSBURY COLLECTION The Living Area

Sir Robert and Lady Lisa Sainsbury spent a life-time gathering artefacts from around the world and supporting new artists, many of whom became close friends, including Giacometti and Frances Bacon. They nurtured people they believed in and amongst them was Sir Norman Foster who was an unknown but ambitious architect when they commissioned him to design the Sainsbury Centre at UEA to house their collection for the benefit of academic study. It was the turning point of his career and he remains closely involved with the building to this day.

The Robert and Lisa Sainsbury Collection features work spanning 5,000 years of human creativity. Modern work by artists such as Henry Moore, John Davies and Alberto Giacometti sit alongside art from Africa, the Pacific, the Americas, Asia, Egypt, medieval Europe and the ancient Mediterranean.

The Collection holds the largest collection of early Francis Bacon work in Northern Europe. The Lisa Sainsbury Collection of Modern Pots includes work from Lucie Rie, Rupert Spira and has the largest collection of Hans Coper and superb works from



*Seal handle, Germany
(unconfirmed), c. 1900, Anderson
Collection of Art Nouveau*



*Robert & Lisa Sainsbury Collection
Figure of a walking hippopotamus
Egypt Dynasty XII; c. 1880 BC
Faience (ceramic)*

Picasso and Modigliani and the perennially popular Anderson Collection of Art Nouveau, currently on display on the mezzanine as the First Moderns.

The Sainsbury Collection is primarily shown in a gallery known as the Living Area, where modern European art is interspersed with works from across the globe, grouped by geographical region. In 1978 the presentation of ancient world art alongside modern masters was greeted as a revelation – today it continues to provide juxtapositions across time and culture that can inspire and surprise.

Opening times:
Tuesday to Sunday 10am-5pm.
Closed on Mondays, including
bank holidays.

**Admission to Sainsbury Centre
collections and other special
exhibitions is free.**

Stew Gallery & Artists' Studios



Stew is an artist-led non-profit making project based in a former handbag factory in the heart of the creative sector in Norwich. The main ethos is to provide access to the arts by offering affordable gallery, studios and screen printing facilities to artists and frequent open access shows from local and national artists.

STEW GALLERY offers an open submission space for artists in addition to curated shows by Stew members, with work by both emerging and established creatives from both national and international backgrounds. It is open to the public and provides a platform for creative practitioners to show, sell and promote their work.

All exhibitions and events are free entry.

STEW PRINT ROOMS The Screen Print Rooms at Stew have been set up to complement the Stew Gallery and Artists' Studios and to provide the general public with affordable screen printmaking facilities in textiles and paper. It is run by professional artists who are passionate about printmaking and have a wealth of professional experience.

STEW STUDIOS The studios at Stew provide affordable spaces for artists. Being mainly open plan with natural light provided by sky lights and large windows the space is friendly, open and creative. Rents are low in keeping with our philosophy of accessibility.

Exhibitions

25 October–2 November 11am–6pm

STEW PRESENTS: PRINT ODYSSEY



An open submission show in its third year presenting work from national and international print makers and artist using print as their medium.

Preview 24 October 2013 6:30–9:30pm
Open daily

Enquiries email: marcus@stew.org.uk or jo@stew.org.uk
Stew, 40 Fishergate Norwich Norfolk NR3 1SE

A quick guide to art in Norwich



View of Norwich from City Hall towards Norwich Castle

Norwich is a medieval city which, in its hey-day, rivalled London in terms of size and was for many years England's second city, being only 100 miles from the court of London. In Samuel Pepys' time, the City of London and Norwich were the same size. It was also a wealthy city with its fame built on textile trade, weaving and particularly wool. Nearly half of the population was French, Dutch or Flemish and engaged in the weaving trade - hence the name of the football club, the Canaries, called after the birds which the weavers kept for company.

In the Industrial Revolution, Norwich was off the beaten track for commerce and transport and so attracted artists, philosophers and radical thinkers. Many religious non-conformists settled here and the place became a hotbed for reformers, writers, artists and thinkers, as it is today. It is also now a UNESCO City of Literature.

Amongst its many cultural assets Norwich can claim:

Norwich University of the Arts, one of the strongest universities for courses in animation and film, fine art and illustration, games design, graphic design, media and much more, including the **Gallery** in St George's Street.

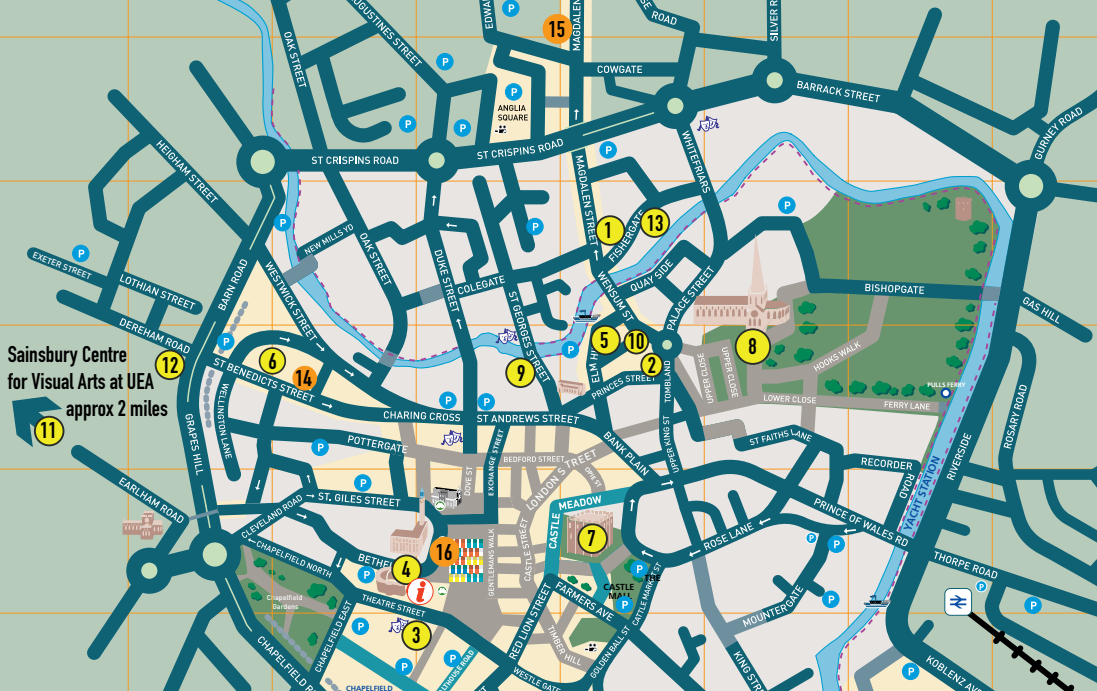
Norwich Castle and the Sainsbury Centre for Visual Arts - world-class venues, attracting national-level touring shows from across the globe, with permanent collections of work by Picasso, Henry Moore, Francis Bacon, Modigliani, Degas as well as local masters - Munnings and the Norwich School of Painters as well as contemporary work from artists such as Colin Self.

Norfolk and Norwich Festival, an international multi-arts annual festival with 17 days of concerts, outdoor arts and theatre, both mainstream and left-field, as well as an increasingly innovative and site-specific visual arts programme.

Norwich Arts Centre is also a multi-arts venue with a visual art programme which includes live art, photography and digital art, and **Norwich Cathedral** is developing its events programme.

There are also a number of artist-led galleries and studios, notably **OUTPOST** and **Stew**, and more recently **SOUP Lab** - offering photography and darkroom facilities - and some well-established and very active, artists' groups such as **Norfolk Contemporary Arts Society**, **Anteros Arts Foundation** and **Norwich 20 Group**. **Sculpture for Norwich** is a charity which promotes and fundraises for more public sculpture.

The Forum Trust, **Assembly House**, **St Margaret's Church** all support artists and host exhibitions and there are several small commercial galleries such as **Art 18|21** and **Mandell's**. As well as Art in Norwich partners, there are over 800 practising visual artists and groups in Norfolk and a thriving underground arts scene in addition to the main institutions. www.artinnorwich.org.uk



GALLERIES AND ART VENUES IN THE CITY OF NORWICH

Art in Norwich members and venue details

- 1 Anteros Arts Foundation, 7–15 Fye Bridge Street, Norwich NR3 1LJ Tel: 01603 766129 www.anteros.co.uk
- 2 Art 18|21, Augustine Steward House, 14 Tombland, Norwich NR3 1HF Tel: 01603 763345 www.art1821.com
- 3 Assembly House & Noverre Gallery, Theatre Street, Norwich NR2 1RQ Tel: 01603 626402 Email: admin@assemblyhousenorwich.co.uk www.assemblyhousenorwich.co.uk
- 4 The Forum, Millennium Plain, Norwich, Norfolk NR2 1TF Tel: 01603 727950 www.theforumnorwich.co.uk
- 5 Mandell's Gallery, Elm Hill, Norwich NR3 1HN Tel: 01603 626892 info@mandellsgallery.co.uk www.mandellsgallery.co.uk
- 6 Norwich Arts Centre, St Benedicts Street, Norwich NR2 4PG Tel: 01603 660352 www.norwichartscentre.co.uk
- 7 Norwich Castle Museum & Art Gallery, Norwich Castle, Castle Hill, Norwich NR1 3JU Tel: 01603 493625 (Mon–Fri) www.museums.norfolk.gov.uk
- 8 Norwich Cathedral, The Close, Tombland, Norwich NR1 4EH Tel: 01603 218300 Email: reception@cathedral.org.uk www.cathedral.org.uk
- 9 The Gallery at Norwich University of the Arts, St George's Street, Norwich NR3 1BB Tel: 01603 756247 www.nua.ac.uk
- 10 OUTPOST Gallery, 10b Wensum Street, Norwich NR3 1HR Tel: 01603 612428 www.norwichoutpost.org
- 11 Sainsbury Centre for Visual Arts, University of East Anglia, Norwich NR4 7TJ Tel: 01603 593199 www.scva.ac.uk

Art in Norwich : contact details

- 12 SOUP Lab, 5 St. Benedict's View, Grapes Hill, Norwich, NR2 4HH contact@thesoupclub.co.uk www.thesoupclub.co.uk
- 13 Stew Gallery & Artists' Studios, 40 Fishergate Norwich NR3 1SE email: marcus@stew.org.uk or jo@stew.org.uk www.stew.org.uk

Other venues used for exhibitions and events

- 14 St Margaret's Church, St Benedict's Street, Norwich NR2 4AQ *Not open all the time
- 15 EPIC Studios, 112 –114 Magdalen St, Norwich NR3 1JD Tel: 01603 727 727 www.epic-tv.com
- 16 Undercroft, beneath the Memorial Gardens, Norwich Market. access from Gaol Hill. *Not open all the time

Member organisations without venues

Norfolk Contemporary Arts Society c/o Events co-ordinator Janey Bevington email: j63bevington@btinternet.com www.n-cas.org.uk

Norfolk & Norwich Festival office Augustine Steward House, Tombland, Norwich Tel: 01603 766400 www.nnfestival.org.uk

Norwich 20 Group email: n20noticeboard@gmail.com www.norwich20group.co.uk

Sculpture for Norwich www.sculpturefornorwich.co.uk

Culture Shift Email: info@theshiftnorwich.org.uk www.theshiftnorwich.org.uk

March–August 2013

Art in Norwich

What's on? – a round-up of visual art, sculpture and architectural events in Norwich



Art in Norwich partners are:



NORFOLK
CONTEMPORARY
ART SOCIETY



ART
18121



Shift Norwich

Art in Norwich produced by The Shift Norwich
www.artinnorwich.org.uk



Art in Norwich