



# Art in Norwich

‘What’s on?’

a round-up of visual art, sculpture  
and architectural events in Norwich

August 2013–March 2014

# at a glance : August '13 – March '14

## AUGUST 2013

To 16 Mar '14	Norwich Castle : John Sell Cotman	25
1 Aug–11 Sept	Theatre Royal : Bruce Black	22
To 15 Aug	Art 18 21 : Alec Cumming	7
2–21 Aug	OUTPOST : Claire Bayliss	30
2 Aug–1 Sept	Norwich Cathedral : Leviathan	20
20 Aug–19 Oct	NUA : For What It's Worth	28
21–25 Aug	The Forum : Friends of NNUH	11
22–26 Aug	The Forum : Springboard to Victory	12
24 Aug–5 Sept	Norwich Cathedral : Photography	20
30 Aug–5 Oct	Anteros Arts : John Bardell	6
31 Aug–4 Sept	NUA : MA Degree Shows	28
31 Aug–14 Sept	Mandell's Gallery : Former RA students	14
till 29 Aug	Assembly House : Coast	8

## SEPTEMBER 2013

1–30 Sept	Art 18/21: The Deck of Cards	7
2 Sept	N20 Group : Talk – A Curator's Life	23
2–21 Sept	OUTPOST : Wojciech Kosma	30
3 Sept	NCAS at The Forum : Ian Collins Talk	16
4 Sept–22 Oct	Norwich Cathedral : 25 Treasures	20
6 Sept–31 Oct	Assembly House : Wildlife Exhibition	8
9–21 Sept	Norwich Print Fair	18
12 Sept–12 Dec	N20 Group : Thursday Life Drawing	24
12 Sept–2 Nov	Norwich Arts Centre : Jeremy Webb	19
13 Sept	Theatre Royal : Sarah Cannell	22
14 Sept–24 Feb	SCVA : Masterpieces : Art & E Anglia	33



Main cover image: 'Summer' Kerry Buck  
 Also John Bardell 'Stained Glass', Tony Hill 'The Doors'  
 SCVA 'King John Cup', c 1325, Polly Cruse 'Still Lives'

# Art in Norwich : at a glance

## SEPTEMBER 2013 cont

14 Sept	Print Fair : Portfolio & Artists' Day	18
15 Sept	Print Fair : Print-makers in Action	18
16–20 Sept	The Forum : Wymondham College	12
19 Sept	SCVA Masterpieces Lecture Series	34
21 Sept	Print Fair : Portfolio & Artists' Day	18
26 Sept	SCVA Masterpieces Lecture Series	34
28 Sept–19 Oct	Mandell's Gallery : Emrys Parry	14
28 Sept–5 Jan	Norwich Castle : Curiosity	26
29 Sept–3 Oct	The Forum : Go Go Gorillas & Auction	13

## OCTOBER 2013

1 Oct	N20 Group : Open meeting	23
1–31 Oct	Art 18/21 New Contemporaries UK	7
2–21 Oct	OUTPOST : Nicholas Byrne & Gili Tal	30
3 Oct	SCVA Masterpieces Lecture Series	34
3 Oct	The Forum : Go Go Gorillas Auction	13
5 Oct–23 Mar	Norwich Castle : Frances Kearney	25
7–25 Oct	The Forum : Malca Schotten	13
7–19 Oct	Norwich Fringe Festival : Undercroft	5
7 Oct	N20 Group : The Big Draw	23
10 Oct	SCVA Masterpieces Lecture Series	34
10 Oct–16 Nov	Anteros Arts : Rachel Daniel	6
10 Oct–16 Nov	Anteros Arts : Jeremy Taylor	6
10–31 Oct	FANN13 Festival of Architecture	10
17 & 24 Oct	SCVA Masterpieces Lecture Series	34
24 Oct	STEWE : Print Odyssey	36
25 Oct–2 Nov	Norwich Cathedral : Hostry Festival	20
25 Oct–23 Jan	Theatre Royal : Jane Ironside	22
31 Oct	NUA : Les Bicknell	28
31 Oct	SCVA Masterpieces Lecture Series	34

## at a glance : August '13–March '14

### NOVEMBER 2013

1–30 Nov	Art 18/21 New Contemporaries India	7
2–21 Nov	OUTPOST : Thomasson & Beech	30
5 Nov	N20 Group : artist's talk Guy Portelli	23
5–19 Nov	Norwich Cathedral : Howard Temperley	21
<b>6 Nov–24 Dec</b>	Assembly House : Christmas Exhibition	9
7 Nov	NCAS at The Forum : Matisse talk	17
7 Nov	SCVA Masterpieces Lecture Series	34
12 Nov	NUA : Tony Hill	28
14 Nov	SCVA Masterpieces Lecture Series	34
<b>16 Nov–21 Dec</b>	Norwich Arts Centre : Still Lives/Polly Cruse	19
21 Nov	SCVA Masterpieces Lecture Series	34
22/23 Nov	Anteros Arts : Artisan Craft Fair	6
22 Nov–1 Dec	Norwich Cathedral : Contemporary Crafts	21
23 Nov	Norwich Arts Centre : Still Lives workshop	19
28 Nov	SCVA Masterpieces Lecture Series	34
29 Nov	NCAS Biennial Auction	17
30 Nov–1 Dec	Assembly House : Christmas Fair	8
30 Nov	NAC : Still Lives Conversation	19

### DECEMBER 2013

Dec–Jan 2 '14	Anteros Arts: Schools Portrait Prize	6
1–31 Dec	Art 18/21: Festive Frolics	7
1 Dec	Assembly House : Christmas Fair	8
2–21 Dec	OUTPOST : Members' Show	30
<b>2 Dec–4 Jan '14</b>	Mandell's Gallery : Brian Whelan	14
3 Dec	NUA : Alec Cumming	28
<b>5 Dec–1 Jan '14</b>	Norwich Cathedral : Praying with Icons	21
5/12/19 Dec	SCVA Masterpieces Lecture Series	34

## Art in Norwich : at a glance

### JANUARY 2014

<b>Jan–Mar</b>	Anteros Arts : Jack Coleman	6
1–31 Jan	Art 18/21: Festive Frolics cont	7
4–28 Jan	Norwich Cathedral : The World is Richer	21
7 Jan	N20 Group : speaker tbc	23
9 Jan	N20 Group : Thursday Life Drawing	24
<b>25 Jan–23 Apr</b>	Theatre Royal : Mary Spicer	22

### FEBRUARY 2014

1–28 Feb	Art 18/21 : Winter Show	7
1–18 Feb	Norwich Cathedral : Living Stones	21
4 Feb	N20 Group : Open meeting	23
22 Feb–2 Mar	Norwich Cathedral : David Thompson	21

### MARCH 2014

1–31 Mar	Art 18/21: Winter Show cont	7
3–16 Mar	The Forum : NCAS Exhibition	13 & 16
4 Mar	N20 Group : artists' talk David Paskett	23
17–31 Mar	The Forum : N20 Group Exhibition	13 & 24

Dates in **RED** indicates a show that runs over a longer period beginning in one month and ending in another

Information correct at time of going to press. Please check details on organisation websites before travelling.

**Art in Norwich** is produced by The Shift as a companion to **Music in Norwich** – a roundup of concerts and music events in Norwich. Available in arts racks, venues and Tourist Information Centre or online.  
[www.artinnorwich.org.uk](http://www.artinnorwich.org.uk) [www.musicinnorwich.org.uk](http://www.musicinnorwich.org.uk)

# About Art in Norwich

This programme is the result of a collaboration between a number of organisations who promote visual art, public art, craft and architecture in and around Norwich in Norfolk. The aim is to gather visual art listings in one place so that they are easy to find and also to offer an overview of art activity and infrastructure across the city and throughout the year. The Art in Norwich Forum is a self-supporting partnership of visual art groups and organisations active in Norwich and the surrounding area.

We hope you will keep this booklet safe as it covers six months' programming. Because of space limitations and lots going on, exhibition and event details are brief but you can find out more from individual organisations and venues from their own websites. See page 39 for contact and venue details. Please also visit our website at [www.artinnorwich.org.uk](http://www.artinnorwich.org.uk) where you can download a pdf of this programme.

*Important: All information is subject to change - please check with individual organisations before travelling to an event.*

Image: David Jones, Wingnut Tree, Tombland Alley, Autumn





14 September 2013 to 24 February 2014  
Sainsbury Centre for Visual Arts, UEA

## Masterpieces: Art and East Anglia

*Curated by Ian Collins*

*A major exhibition showing masterpieces from, or  
with links to, East Anglia*

*For details see page 33*

*Image: John Sell Cotman, 'Storm on Yarmouth Beach', 1831,  
Norfolk Museums & Archaeology Service, Norwich Castle  
Museum & Art Gallery*

**SAINSBURY  
CENTRE**  
for Visual Arts

### Editor's notes

This autumn sees the opening of the blockbuster exhibition *Masterpieces: Art and East Anglia*. This is a major exhibition for the region and also marks the end of a year-long transformation of the gallery spaces at the Sainsbury Centre for Visual Arts. There are many rare and valuable works on loan which have an East Anglian connection, plus series of related events throughout the exhibition. This is one not to miss!

Also look out for linked exhibitions and events at Norwich Cathedral, Art 18|21 and Norwich Contemporary Art Society at The Forum.

In October, Norwich Fringe Festival runs from 7–19 in locations around the city and Norfolk & Norwich Association of Architects are running their biennial Festival of Architecture 10–31 October. At The Forum, Go Go Gorillas are being auctioned on 3 October. Another auction of work is run by NCAS on 29 November, just in time for Christmas and there are a number of other Christmas-themed shows too. Norwich Print Fair is also opportunity to buy excellent work.

Norwich and area abounds with talent – you will find much of it listed here. I hope you enjoy it.

*Marion Catlin, Culture Shift Norwich*

# Anteros Arts Foundation



Anteros Arts Foundation is an arts venue in the city centre. We are committed to developing the arts, offering art courses and tuition, as well as presenting professional exhibition space.

The evening classes, life drawing, weekend classes and masterclasses are all designed to develop individual creativity as well as technical skills. Inspiring venues and small classes provide a unique atmosphere in which to learn and explore ways to make art, away from the demands of daily life.

## Exhibitions

30 August–5 October 2013

### JOHN BARDELL LATEST WORKS

Stained glass, drawings and paintings. John Bardell is one of the region's best known stained glass makers.



*Stained glass window  
John Bardell*

10 October–16 November 2013

### RACHEL DANIEL SOLO EXHIBITION

Rachel was the winner of the East Anglian Artists Development Prize, featuring detailed drawings and paintings of the human body in the twenty-first century.

10 October–16 November 2013

### JEREMY TAYLOR ARCHITECTURAL PAINTINGS

as part of the festival of architecture FANN13

22 & 23 November

### ARTISAN CRAFT FAIR

December–January 2014

### EAST ANGLIAN SCHOOLS PORTRAIT PRIZE

January–March 2014

### JACK COLEMAN

More details on [www.anteros.co.uk](http://www.anteros.co.uk)

Anteros Arts Foundation, 7–15 Fye Bridge Street  
Norwich Norfolk NR3 1LJ Tel: 01603 766129

## Art 18|21 Gallery



*Gallery down the stairs, opposite the main entrance to Norwich Cathedral in the undercroft below Tombland Antiques.*

**Art 18/21 Gallery and Art Advisers**, specialising in Modern and Contemporary British and South-Asian Art. Housed in one of Norwich's oldest buildings the Gallery hosts changing exhibitions and holds collections of secondary market artworks.

We work closely with established artists such as Maggi Hambling, Colin Self and Matthew Lanyon and young emerging artists Alec Cumming, Isabel Rock and Mitali Shah. Our collections include works by Alan Davie, John Hoyland and other recognised artists.

## Exhibitions



*Alec Cumming  
'Precious'*



August (to the 15th) **EARTHLY EPICS PARADISE SPICE**  
The return show of new work by Alec Cumming.  
September **THE DECK OF CARDS** with SCVA  
October **NEW CONTEMPORARIES: UK**  
November **NEW CONTEMPORARIES: INDIA**  
December **FESTIVE FROLICS...**  
January **FESTIVE FROLICS**  
February **WINTER SHOW...**  
March **WINTER SHOW**

Gallery open Tues-Sat 10am-5pm and by appointment.  
Augustine Steward House, Norwich NR3 1HF  
Tel: +44 (0)1603 763345 Mobile: 07879 673419  
Email: [laura@art18/21.com](mailto:laura@art18/21.com) [www.art1821.com](http://www.art1821.com)



## Assembly House and Noverre Gallery & Shop



The Assembly House is a proud supporter of the arts, and exhibitions, concerts, lectures and plays take place here on a regular basis. The wonderful **Noverre Gallery & Shop** sells British art and crafts including prints, ceramics, jewellery, cards and wrapping paper and is curated by Creative Arts Manager Lottie Day. Occasionally the gallery operates as a pop-up studio.

A variety of exciting exhibitions is planned this year and further information on all arts events can be found in the quarterly Assembly House Arts Programme & Brochure, available at the House and online at [www.assemblyhousenorwich.co.uk](http://www.assemblyhousenorwich.co.uk).

*Andrew Waddington*  
*Ebb Tide, Hand-drawn Lithograph, printed at The Curwen Studio*

## Exhibitions

Thursday 4 July–Thursday 29 August 2013  
**COAST**

An exciting exhibition looking at where the sea meets the land, Coast features an eclectic mix of artists including printmakers, sculptors and painters. Includes work by Clair Curtis, Penny Bhadresa and Stephen Henderson.

Friday 6 September – 31 October 2013  
**WILDLIFE EXHIBITION**

Come along to The Assembly House this autumn to see the wonderful wildlife paintings, prints and cards by artists including Andrew Waddington, Stacey Knights, Carry Akroyd, Louise Bird and more.







Carry Akroyd

## Wednesday 6 November–Wednesday 24 December CHRISTMAS EXHIBITION

Over the festive season the gallery will be showcasing some of our most loved artists, including fabulous gifts, decorations and one-off hand printed goods made exclusively here in the Noverre Gallery by Lottie Day.



Noverre Gallery & Shop  
at Christmas

## Saturday 30 November and Sunday 1 December, 2013 CHRISTMAS FAIR

Make a date in your diary for this year's Assembly House Christmas Fair, open from 10am to 5pm (entrance free). As always, the fair will feature a host of fabulous arts and crafts stalls as well as festive foods, plants and toys.

The Assembly House also has a welcoming café/bar and restaurant and is renowned for its coffee, cakes and traditional afternoon tea. Adjacent to Norwich Theatre Royal, the pre-theatre dinner is also very popular.

All exhibitions listed are open from 9am to 5pm,  
Monday to Saturday, admission free.

The Assembly House, Theatre Street, Norwich, NR2 1RQ  
Tel: 01603 626402. Registered charity no: RCN 1111391.

# FANN13 Festival of Architecture



Photo: James Brittain

*Jersey House, Hudson Architects, winner of RIBA Regional Award 2013*

**FANN13** (Festival of Architecture in Norwich & Norfolk), the Norfolk Association of Architects' biennial festival celebrating the county's contemporary architecture, returns, running from **Thursday 10 October to Friday 31 October**.

A packed programme of events in Norwich aimed at a general audience hopes to stimulate public interest in contemporary architecture and building-related design in the region. The Festival will feature the work and ideas of the region's architects, and outstanding work in the county by architects from farther afield: buildings, interiors, landscape design, master-planning...

## 10–31 October 2013 Exhibitions & events

**FANN13 EXHIBITION** at The Forum

**PERSPECTIVES** early evening talks at The Forum

**JUNIOR ARCHITECT** half-term events at the Sainsbury Centre and the Castle Museum

**FANN13 PHOTO-COMPETITION** in association with the EDP

**PLAYING WITH SPACE** art-films curated by Townley & Bradby in Fusion at the Forum

**ARCHITECTURE IN FILM** at Cinema City: Red Road, Clockwork Orange, Fahrenheit 451

**ARCHITECTURAL PECHA KUCHA** in the Bar at Cinema City

**TEA WITH AN ARCHITECT** free architectural consultations

**ART/ARCHITECTURE EXHIBITIONS** at venues around the City

Most events are free.

For full details and dates please go to [www.fann.org.uk](http://www.fann.org.uk)

Email [info@fann.org.uk](mailto:info@fann.org.uk), telephone 01603 666011



*Jelly City workshop SCVA FANNXI*



*Exhibition at The Forum, FANNXI*

## The Forum



The Forum, right in the heart of Norwich city centre, is home to a year-round programme of FREE exhibitions, activities, markets and digital shows. It's also a great place to grab a coffee, a pizza or, of course, to explore the busiest public library in the UK.

The Forum's website has information on day-to-day events going on in the huge, glass Atrium, and in the Fusion Gallery. There are also courses, classes and talks going on in the library and regular music and conversation gatherings in Café Bar Marzano.

You can also follow The Forum on Twitter – [@TheForumNorwich](#) – and Facebook – [The Forum, Norwich](#) – for updates, images and videos.

This year's programme of events is already packed to the gunnels with an eclectic mix of art, literature, dance, music, sport, nature, history and heritage. The Forum is open seven days a week so drop in anytime and see what's going on.



### Exhibitions

**Wednesday 21 – Sunday 25 August 2013**  
**FRIENDS OF NNUH EXHIBITION**

This exhibition and sale of original artwork is designed to appeal to a range of art tastes and all work is by local artists, including Graham Howlett, Liz Balkwill, Bunty Gotts and Graham Dunthorne. The event is organised by The Friends of the Norfolk and Norwich University Hospital and all proceeds will be used to support the work of the Hospital.



*P47s at Halesworth Ian Gartska*

**Thursday 22–Monday 26 August 2013**  
**EAST ANGLIA: SPRINGBOARD TO VICTORY**

Always having had a passion for vintage aviation, artist Ian Gartska decided to create a series of paintings dedicated to the classic aircraft and the extremely brave men who flew them from our quiet corner of Britain during World War two.

The 2nd Air Division Memorial Library is also exhibiting some photos taken by Charles Nigrelli who was a Photographic Laboratory Chief for the 389th Bomb Group.

*Wymondham College Perspectives 2*



**Monday 16–Friday 20 September 2013**  
**WYMONDHAM COLLEGE 'PERSPECTIVES 2'**

'Perspectives 2' is the second Forum exhibition displaying work from art students at Wymondham College. The exhibition features a selection of fine art, photography and textile design from GCSE and A Level students. The works shows an abundance of different subject matter, style & techniques as well as contrasting, individual perspectives.

Sunday 29 September–Thursday 3 October  
**GO GO GORILLAS**

Auction: Thursday 3 October

All the gorillas from this summer's trail will be on display in the Forum before they are auctioned in aid of charity on the evening of Thursday 3 October. For further information, to pre-bid or book tickets for the auction, please visit [www.gogogorillas.co.uk](http://www.gogogorillas.co.uk).



*A GoGoGorilla*

Monday 3–Sunday 16 March 2014  
**NORFOLK CONTEMPORARY ART SOCIETY**  
for details see page 16

Monday 17–Monday 31 March 2014  
**NORWICH 20 ART GROUP 70th ANNIVERSARY EXHIBITION**  
for details see page 24



*Norwich 20 Group artist Joceline Wickham*

Mon 7 October – Fri 25 October 2013

**'I'M NOT DEAD YET'**

Malca Schotten

Malca Schotten is a Norfolk-based artist and one of her passions is working with older people in an on-going project she has named '*I'm Not Dead Yet*'. Fifteen new portraits will be displayed in the Forum and Library to celebrate the contributions made to society by older people. There will also be a film shown in the Fusion Gallery.

Malca invites older people to sit for her and, while she creates larger than life portraits of them, she explores their personal stories which otherwise might be left untold.



*Portrait by Malca Schotten*

We have regular exhibitions by local artists so please visit the website for updated information:  
[www.theforumnorwich.co.uk](http://www.theforumnorwich.co.uk).

## Mandell's Gallery



Mandell's Gallery is one of Norwich and Norfolk's most respected commercial art galleries. Mandell's Gallery was founded in 1965. Originally specialising in 19th century Norwich School painters, the gallery has expanded greatly and now has a diverse collection of traditional and contemporary art, offering opportunities for many new and local artists as well as more established names. You are welcome to view the collection at the art gallery, situated on the beautiful and historic street of Elm Hill, near Norwich Cathedral.

More info [www.mandellsgallery.co.uk](http://www.mandellsgallery.co.uk) Tel 01603 626892.

### Exhibitions

31 August–14 September 2013

#### EAST ANGLIA GROUP FORMER STUDENTS OF THE ROYAL ACADEMY SCHOOLS

*"The East Anglia Group of artists, have continued to make and exhibit on a regular basis since graduation which for many is a lifetime. The diversity of their ideas and methods can be attributed to discoveries made during their studies."* John Holden 2013

28 September–19 October, 2013

#### EMRYS PARRY

Emrys has lived in East Anglia for most of his adult life but has never spiritually left Wales, the land of his childhood. He is interested in the imprint of man on his environment and how past thoughts and actions of individuals are recorded and transmitted by the objects they leave behind.

2 December–4 January, 2014

#### BRIAN WHELAN

Brian's journey as an artist found its real gateway just outside his own door, in the medieval churches and dwellings of East Anglia. His works depict a sublime comedy of life's glories and tragedies on both religious and secular planes.



Ivy Smith, 'Tamarisk'





Hudson Architects is an award-winning architecture and design practice based in London, Norwich and Holt working throughout the UK and internationally.

The practice is renowned for modern, innovative design across a wide variety of projects including private one-off homes, urban and rural regeneration and community buildings and spaces with a specialist interest in the arts.

Previous award-winning schemes include OPEN Youth Venue in Norwich, Salvation Army in Chelmsford and Monastery Court at Norwich University of Arts. We are currently working on the extension and redesign of the Grade II listed Diss Corn Hall community arts venue.





The Norfolk Contemporary Art Society, founded in 1956, is a charitable association that promotes the interests of contemporary art in Norfolk. It has acquired its own collection of paintings and sculpture, which form the basis of the holdings in post-war art in the Norwich Castle Museum & Art Gallery. NCAS has also raised funds for public sculptures and has an on-loan collection of local artworks.

Supporting local art in many ways, NCAS mounts a lively programme of monthly events, mostly in Norwich, which includes lectures by artists, critics and art historians, gallery visits, auctions, private views and parties. They also curate exhibitions, including a large biennial open show in the Forum.

## Exhibitions, Visits & Talks

Tuesday 3 September 2013

The Curve Lecture Theatre,  
The Forum, Norwich 7.30pm

### CURATOR'S CHOICE –

Ian Collins will preview the  
blockbuster 'Masterpieces:  
Art & East Anglia' exhibition



*The Longest Journey, Ana Maria Pacheco*

Ian is presenting this exciting collection at the Sainsbury Centre for UEA's 50th birthday.

A familiar face to NCAS members and a faithful devotee to the East Anglian art scene, Ian has kindly agreed to give a private preview of the selection that he has made for this truly iconic exhibition that will attract an audience from far and wide.

Many of the pieces on show have never been seen in public and most have never travelled afar. Ian will tell us how, and why, such pieces were acquired for the show and the stories of their provenance.

Ian Collins has written extensively as a journalist and reviewer of the arts and has published books on East Anglian art and many of its prominent artists.

**Admission: Members £2. Non-members £4.50**

**NB: Masterpieces: Art & East Anglia opens 14 September.**

Thursday 7 November 2013  
7.30pm

The Curve Lecture Theatre  
The Forum, Norwich  
**MATISSE... a talk by Hilary Spurling.**

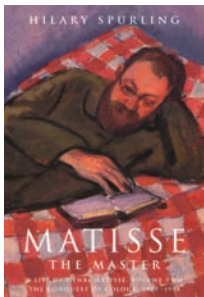
The NCAS are fortunate to have Hilary to come and talk to us, not only about her book, *'Matisse, the Master'*, but about the part she will be playing in the comprehensive Matisse exhibition planned at the Tate in the spring of 2014.

The extraordinary works Henri Matisse made during the last period of his life are to be exhibited together for the first time.

120 pieces, including his *'Large composition with Masks'* from Washington's National Gallery of Art, *'Memory of Oceanana'* from MOMA in New York and *'The Snail'* from the Tate's own collection, will be shown alongside many other well-known Matisse masterworks.

The NCAS will hope to follow this talk with a trip to see the Exhibition in 2014.

**Admission: Members £2. Non-members £4.50**



Friday 29 November 2013  
The Council Chambers,  
City Hall, Norwich  
**NCAS BIENNIAL AUCTION**

Those of you that have attended one of these events will know what fun we have and what bargains you can find!



*Auction of work at City Hall*

Members, friends, local artists, restaurants and galleries all give generously to support the NCAS funds, and items are sold at very reasonable prices. This year we hope to make the auction one of the highest quality.

Donations are always accepted and we hope that you will come to join us for a memorable event at the start of the Christmas season.

**Viewing 6.30pm, bidding from 7.30pm.**  
**A bar will be available.**

**For more details of events as they become available, check the website [www.n-cas.org.uk](http://www.n-cas.org.uk).**

*NCAS events are open to both members and non-members. Members receive our programme and regular newsletter by post, and enjoy reduced rates to talks, plus excursions, invitations to private views, and other events. Membership details are on the website [www.n-cas.org.uk](http://www.n-cas.org.uk).*

## 18th Norwich Print Fair



*St Margaret's Church*



*Richard Horne 'Cathedral'*

Now celebrating its 18th year the Norwich Print Fair once again brings together 30 of Norfolk and Suffolk's finest printmakers, displaying a wide variety of hand-made print techniques, all within the unique setting of St. Margaret's, an historic Norwich church.

The Norwich Print Fair was founded to showcase the talent and craft that goes into contemporary print-making. It champions traditional methods such as mezzotint, etching, linocutting and wood engraving, and showcases new techniques – using materials such as photopolymer resins.

*Above right: Amanda Colville 'Cockere'*

From its inception, it has sought to inform and inspire audiences regarding the processes behind the creation of original prints.

Monday 9–Saturday 21 September 2013  
St. Margaret's Church, St. Benedict's Street  
**THE 18th NORWICH PRINT FAIR**  
An Exhibition of Artists' Original Prints  
Open 10am to 5pm Monday to Saturday



**Open Portfolio Days** Saturday 14, Saturday 21 &  
Sunday 15 – 11am to 4pm **Printmakers in Action** –  
Artists demonstrating their techniques.  
**Admission free.**



### **Saturdays 14 and 21 September Artists' Days**

All of the artists will be present, displaying extra work, sketchbooks and printing plates to illustrate their varying techniques. The atmosphere is informal and artists are happy to answer questions about their work – no matter how technical!

### **Sunday 15 September, 'Printmakers in Action'**

A rare chance for the public to observe artists at work, producing original prints. Discover how various plates are made and printed – screenprints, linocuts, mezzotints, etchings and collagraphs. With the chance to see the prints emerging from the presses, this day is a real treat.

# Norwich Arts Centre



Norwich Arts Centre is a multi-arts venue, delivering a programme of live music, theatre, live art, comedy, live literature, visual art, and courses. Our exhibitions are wheelchair accessible, and free entry. Please check our website [www.norwichartscentre.co.uk](http://www.norwichartscentre.co.uk) for more details.

Exhibitions & Education Co-ordinator: Holly Rumble,  
[holly@norwichartscentre.co.uk](mailto:holly@norwichartscentre.co.uk)

Norwich Arts Centre, 51 St Benedicts Street, Norwich  
NR2 4PG Tel: Box office 01603 660352

## Exhibitions and events

Main gallery Norwich Arts Centre  
Monday-Saturday 10am-6pm

12 September-2 November 2013

**'SPINDRIFT'** Jeremy Webb – An exhibition of Norfolk Coastal landscapes

A series of coastal landscape photographs from Webb's 15-year-long project to document the changing landscape of the Norfolk Coastline.

16 November-21 December 2013

**'STILL LIVES'** Polly Cruse – An exhibition of still life photography

Polly Cruse's current work is centred on the role of found objects, gifts and memorabilia in the making of a home.



*Still Lives, Polly Cruse*

Saturday 23 November 2-4pm

**WORKSHOP: 'STILL LIVES'**

Bring two or three favourite small objects to create your own composition, in response to the Still Lives exhibition

Free, advance booking essential. All ages, but under 16s must be accompanied by an adult.

Saturday 30 November 12-2pm

**IN CONVERSATION: 'STILL LIVES'**

'In Conversation' is an informal conversation between two well-respected national artists around their influences and practice. Please check NAC website for updates.

# Norwich Cathedral



Located in the heart of Norwich in the beautiful Tombland area of the city, **Norwich Cathedral's Hostry Visitor and Education Centre** hosts a rolling programme of international, national and local exhibitions within the light and spacious exhibition hall.

As well as the exhibitions you can visit the awe-inspiring Cathedral, view the largest monastic cloister in England and enjoy the tranquillity of the Cathedral Close. Exhibitions are in the Hostry Visitor & Education Centre, Monday to Saturday 9.30am–4.30pm and Sunday 12pm–3pm. Exhibitions are open to all and admission is free.

## Exhibitions

Friday 2 August–Sunday 1 September 2013

### LEVIATHAN – TOM ASHWORTH AND PHIL COLES

An exhibition of sculptures, paintings and illustrations in response to the diverse forms and behaviours of whales and dolphins, designed to celebrate, educate and inspire.

Saturday 24 August–Thursday 5 September 2013

### PHOTOGRAPHY EXHIBITION, CATHEDRAL LOCUTORY BEN SMITH

Using unusual viewpoints and varied photographic techniques, this collection of images shows the beauty of Norwich Cathedral and its long-standing relationship with the city of Norwich.

Wednesday 4 September–Tuesday 22 October 2013

### 25 TREASURES OF NORWICH CATHEDRAL

In conjunction with the '*Masterpieces*' exhibition at the Sainsbury Centre for Visual Arts, this exhibition focuses on a selection of the Cathedral's greatest treasures from across 10 centuries and in a variety of mediums.

Friday 25 October–Saturday 2 November 2013

### HOSTRY FESTIVAL EXHIBITION

Focusing on '*My Norfolk*' this exhibition is the culmination of a competition and includes various art forms from artists all over the county as a part of the Hostry Festival 2013.



**Tuesday 5 November–Tuesday 19 November 2013**  
**HOWARD TEMPERLEY – Pictures of Norwich, Norfolk & the University of East Anglia**

An exhibition by Howard Temperley in association with the UEA's 50 celebrations, demonstrating the innovation, power and appeal of computer art.

**Friday 22 November–Sunday 1 December 2013**  
**NORFOLK CONTEMPORARY CRAFT SOCIETY EXHIBITION**

The NCCS aims to promote and support high quality craftwork in the eastern counties and will have various crafts and techniques on display.

**Thursday 5 December–Wednesday 1 January 2014**  
**PRAYING WITH ICONS**  
**St Seraphim's Trust of Walsingham**

This exhibition looks at what an icon is, the liturgical importance of iconography, and the technique used. Each icon will be displayed with its own prayer and the St Seraphim's Iconographer can be seen working between 9–13 December.

**Saturday 4 January–Tuesday 28 January 2014**  
**ALL THE WORLD IS NOW RICHER**  
**Sokari Douglas Camp**

Commemorating the abolition of slavery, this thought-provoking exhibition tells the story of slavery through the use of life-sized steel figures.



**Saturday 1 February–Tuesday 18 February 2014**  
**LIVING STONES**  
**Richard Caston's silent journey**

An exhibition of paintings and drawings representing both a personal and artistic journey of time spent observing and absorbing the special spirit and atmosphere in the Cathedral and Close. This exhibition refers not only to the historical past, but also to the vitality of the Cathedral today as a centre for worship, learning and hospitality.

**Saturday 22 February–Sunday 2 March 2014**  
**DAVID THOMPSON OF LSI ARCHITECTS, NORWICH**

David Thompson's career spans over 35 years witnessing a wide spectrum of drawing techniques, fashions and technologies. This exhibition will focus on the changing styles of drawing in the architecture industry.

Please visit [www.cathedral.org.uk](http://www.cathedral.org.uk) for more details

# Theatre Royal Norwich



Theatre Royal Norwich hosts four solo shows each year by prominent and professional artists from the region. They are organised and curated by artist Sarah Cannell on behalf of Targetfollow Estates and displayed in the Adnams Circle Bar on the first floor at the Theatre Royal. All work is framed and for sale.

All exhibitions open from 9.30am, Monday to Saturday, until the theatre closes (6pm on non-performance days).

Theatre Royal, Theatre Street, Norwich NR2 1RL  
email: [sarah.cannell1@gmail.com](mailto:sarah.cannell1@gmail.com)

## Exhibitions

Until 11 September 2013

**BRUCE BLACK**

New paintings made specially for the theatre space – full of light and colour – by layering paint to achieve luminosity and richness.

13 September–23 October, 2013

**SARAH CANNELL**

Landscape compositions, using acrylic and ink, feature intense colours and a sense of movement and freedom.

25 October 2013–23 January 2014

**JANE IRONSIDE**

Tranquil still lives and the contemplative aspect of water, rivers and the coastline recur in this work.

25 January–23 April 2014

**MARY SPICER**

Norfolk and Suffolk landscapes, reflecting an emotional and intuitive response to place, informed by the working methods and concerns of previous East Anglian painters.



*Barn at Bulcamp Drift*  
Sarah Cannell



*Cloud Flight, Mary Spicer*

## Norwich 20 Group



Anne Allanson

The Norwich Twenty Group of artists was formed in 1944. Now after almost seventy years the membership has grown to over seventy. These include painters, sculptors, installation and conceptual artists, print-makers and photographers. Initially the founding members were mainly Norwich-based, many associated with the Norwich School of Art and other local educational institutions.

Today we are spread all around the county and as from the earliest days include many artists with national reputations. The group aims to put on regular exhibitions, has a monthly meeting, and a weekly life workshop.

### Exhibitions and events

Monday 2 September 2013 – 'A CURATOR'S LIFE'

A talk by Dr David Blayney Brown, Manton Curator of British Art at Tate Britain

**MEETINGS AT PARK LANE CHAPEL, NORWICH**

First Tuesday of month from 7.30pm

Meetings are free and open to all (max capacity 75) so please arrive in good time to get a seat

1 October – **OPEN MEETING**

5 November – **GUY PORTELLI**, sculptor – artist's talk

7 January 2014 – speaker (to be confirmed)

4 February 2014 – **OPEN MEETING**

4 March 2014 – **DAVID PASKETT** – artist's talk

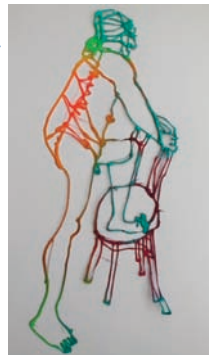
Monday 7 October 10am–4pm  
The Forum, Norwich (and other venues to be confirmed)

**'THE BIG DRAW'**

Free to all, drawing from clothed models holding short poses. The Big Draw is a national drawing event.

For more details see  
[www.norwich20group.co.uk](http://www.norwich20group.co.uk)

Figure, Joanne Randall





*Life drawing, Frances Martin*

Thursday evenings: 12 September – 12 December '13  
and from 9 January 2014

Waterfront Studio, Wensum Lodge, King Street, Norwich

### LIFE DRAWING WORKSHOP

Two hours drawing from 7.30pm to 10pm (with a break).

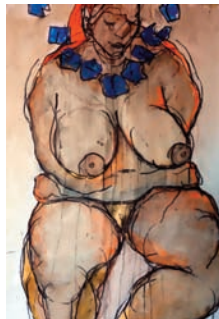
This valued workshop has been running for many years. It is open to everyone, beginners and experienced artists alike. Students and sixth formers are especially welcome. It is run on a 'drop in' basis, with no formal tuition, just come and draw!

After paying a modest sign-up fee, there is a small fee for each session you attend. (Full-time students are exempt from the sign-up fee). Come early to reserve a space. Bring your own drawing materials. Boards, easels, chairs and donkeys are provided.

17–31 March 2014, open daily 10am–6pm  
The Forum, Norwich

### 70th ANNIVERSARY EXHIBITION

To celebrate the birthday of Norwich 20 Group, this is an exhibition of high quality art reflecting the diversity of current work by 20 Group members, including recent graduates from NUA who have been invited to join the group and exhibit with them.



*Life Drawing 'Kay', Richard Cleland*



*Studio Still Life II, Mike Chapman*

Further information or  
queries: [www.norwich20group.co.uk](http://www.norwich20group.co.uk)  
Free entry to all exhibitions

# Norwich Castle Museum & Art Gallery



Built by the Normans as a Royal Palace 900 years ago, Norwich Castle is now home to outstanding collections of fine art, archaeology and natural history. Alongside its own exhibitions Norwich Castle hosts a regular programme of touring shows from major galleries and museums including Tate, V&A, British Museum, the Hayward Gallery and many more.

## Permanent Collections

The **Timothy Gurney Gallery** shows highlights from the Modern and Contemporary Art Collection whilst the **Colman Art Galleries** house the museum's world famous Norwich School paintings by John Crome, John Sell Cotman and their contemporaries.

## Exhibitions

Saturday 5 April 2013–Sunday 16 March 2014

Colman Watercolour Galleries

**JOHN SELL COTMAN: A PICTURESQUE TOUR OF NORFOLK & NORMANDY**

This exhibition aims to reveal Cotman's unrivalled skills as an architectural draughtsman, as well as the depth of his knowledge and enthusiasm for original research.

Saturday 5 October 2013–Sunday 23 March 2014

Colman Project Space

**FRANCES KEARNEY – NEW WORK**

Beautiful yet disquieting, displayed within the context of the Norwich School paintings Frances Kearney's large-scale photographic tableaux respond to the idea of 'landscape'. Carefully choreographed, Kearney demonstrates her fascination with human behaviour, the way we interact with nature and its effects on the human psyche.



For full details on exhibitions and events please see [www.museums.norfolk.gov.uk](http://www.museums.norfolk.gov.uk)

General enquiries – 01603 493625 (Monday–Friday)

Bookings and information – 01603 495897

*The art programme at Norwich Castle is supported by the East Anglia Art Fund – a local charity dedicated to bringing great art to Norfolk.*  
[www.eastangliaartfund.org.uk](http://www.eastangliaartfund.org.uk)

East  
Anglia  
Art  
Fund



Philip Henry Gosse, *Illustrations for Actinologia Britannica* (Plate VI), c.1858-60 ©Heini Schneebeli, Courtesy Horniman Museum and Gardens

# NORWICH CASTLE MUSEUM & ART GALLERY

## CURIOSITY

### Art and the Pleasures of Knowing

28 September 2013–5 January 2014

*'Like the cabinet of curiosities of the 17th century, which mixed science and art, ancient and modern, reality and fiction, this exhibition refuses to choose between knowledge and pleasure. It juxtaposes historical periods and categories of objects to produce an eccentric map of curiosity in its many senses'.* Curator Brian Dillon

A Hayward Touring Exhibition organised in collaboration with Turner Contemporary and in association with Cabinet magazine.



Supported using public funding by  
**ARTS COUNCIL  
ENGLAND**



**HAYWARD TOURING**

**SOUTHBANK  
CENTRE**



# History Rising

*History Rising* is a subversive and engaging study of museum display in East Anglia. Viewers and participants are invited to reconsider their view of history by looking at the mechanisms museums put in place to create a sense of order and hierarchy within their collections.

*A project by Marjolijn Dijkman, curated and produced by Jes Fernie*



## Norwich

28 September '13– 05 January '14  
*The Grand Release*, installation  
Norwich Castle Museum & Art Gallery,  
Castle Meadow, Norwich NR1 3JU.

24 October 2013, 5-7.30pm  
Public event at *Outpost*  
Including a walk and talks by  
artists, curators and lecturers.  
*Organised in collaboration with  
Norwich Castle Museum & Art  
Gallery, Norwich University of the  
Arts and Outpost.*  
10B Wensum St, Norwich NR3 1HR.  
Free



## Wisbech

01 November '13 – 05 January '14  
*On the Enclosure of Time*,  
installation at Wisbech & Fenland  
Museum, Museum Square, Wisbech  
PE13 1ES.

01 November 2013  
Public event – including breakfast  
at *Aid & Abet*, coach tour from  
Cambridge to Wisbech, a performative  
lecture, lunch at *Peckover House*, a  
programme of talks by artists, curators  
and museum designers, and an evening  
launch at *Wisbech & Fenland Museum*.  
*Organised in collaboration with  
Wysing Arts Centre and Aid & Abet*  
Tickets: £15. Limited availability. Email  
ballardliz@hotmail.com for information.

Check our website for more details:  
[www.historyrising.org](http://www.historyrising.org)



## The Gallery at Norwich University of the Arts (NUA)



Tony Hill  
*'The Doors'*

The Gallery at NUA is a city centre public art space showing a programme of exhibitions by internationally recognised artists, curators and media practitioners. Exhibitions are accompanied by seminars and lectures delivered by specialists and curators, which enrich the University experience for students and those living and working in Norwich, as well as visitors to our city.

### Exhibitions

**Tuesday 20 August – Saturday 19 October, 2013**

#### **FOR WHAT IT'S WORTH: PERCEPTIONS OF VALUE IN CONTEMPORARY ART**

Works by Turner Prize winners Damien Hirst, Grayson Perry, Rachel Whiteread and more in a show curated from the Arts Council Collection by NUA MA Curation students.

**Friday 30 August – Wednesday 4 September, 2013**  
**MA DEGREE SHOWS**

Come and see students' degree show final work in Communication Design, Curation, Fine Art, Moving Image and Sound and Textile Design.

**Thursday 31 October 2013**

#### **LES BICKNELL: UNPICKING AND REBINDING**

A one day only 'Pop-up' exhibition of archives, books and textiles – a new body of work and part of Arts Council-funded project '*unpicking and rebinding*' by NUA Senior Lecturer Les Bicknell.

**Tuesday 12 November – Saturday 23 November, 2013**  
**TONY HILL**

Independent film maker Tony Hill's recent installation works, '*The Doors*' and '*The Pool*'.

**Tuesday 3 December – Saturday 21 December, 2013**  
**ALEC CUMMING: TO WANDER, TO LUST**

An exhibition of recent paintings created in Delhi by artist and NUA graduate Alec Cumming.

For more information about the Gallery and events at NUA  
[www.nua.ac.uk/thegallery](http://www.nua.ac.uk/thegallery) Twitter: @nuagallery


The Gallery at Norwich University of the Arts  
St Georges Street, Norwich NR3 1BB Tel: 01603 610561  
Open Tuesday–Saturday 12–5pm. Free admission

# POSTGRADUATE COURSES

All MAs are available on a full and part time basis



**NORWICH**  
**UNIVERSITY**  
**OF THE ARTS**



**Curation**  
**Communication Design**  
**Fashion**  
**Fine Art**  
**Moving Image and Sound**  
**Photography**  
**Textile Design**

For postgraduate Open Days see:  
**[www.nua.ac.uk/opendays](http://www.nua.ac.uk/opendays)**

**"I HAVE WORKED WITH A  
HUGE NUMBER OF TALENTED  
ARTISTS AND THINKERS.  
THE RESOURCES AND  
TUITION ARE OUTSTANDING."**  
Simon Welfare, MA Fine Art

## OUTPOST



OUTPOST Gallery is an artist-led space committed to the uncompromising presentation of contemporary art. The gallery has a core programme of 11 exhibitions per year, opening on the 1st of each month (gallery closed in January). In parallel OUTPOST initiates regular offsite projects, artist talks, film screenings and live events.

OUTPOST is run by a voluntary steering committee and supported by an artist membership. This membership contributes to a vibrant community of artists in Norwich, which OUTPOST seeks to promote alongside the highest quality of national and international artists.

### Exhibitions

The Gallery is open 12-6pm daily.

Exhibitions open on the 1st of each month, 6-9pm. The 2014 programme will begin in February, with the gallery closed in January, please contact OUTPOST for more details.

#### 2013 programme

2-21 August **CLAIRE BAYLISS**

2-21 September **WOJCIECH KOSMA**

2-21 October **NICHOLAS BYRNE & GILI TAL**

2-21 November **EDWARD THOMASSON & LUCY BEECH**

2-21 December **OUTPOST MEMBERS' SHOW**



OUTPOST Gallery, 10b Wensum Street, Tombland,  
Norwich, Norfolk NR3 1HR Tel: 01603 612428

## Red Light Gallery



The Red Light Gallery is a new gallery in Norwich and a new kind of gallery for Norwich. It is an artists' resource and a not-for-profit organisation run by father and son team Adam and Stuart Goodman. Adam has a recent BA in photography from Anglia Ruskin and Stuart, a former newspaper snapper and picture editor, has a Fine Art MA from NUA.

The idea is that the gallery space is hired by the artist or artist groups rather than curated by the gallery.

There is a rentable darkroom and they run courses and workshops in photography. They are very chuffed that they have been given two Leitz Focomat 11c enlargers owned by Picture Post legend Bert Hardy.



If you are an artist, please visit them and see if the Red Light Gallery is right for your kind of show. This is an artist-led space, and they talk your language!

The Red Light Gallery has:

- 2 rentable gallery spaces
- darkroom hire
- photographic workshops
- photographic courses
- pop up shows offering space rented by the wall

As it is a new gallery, there is no advance programme so please check the website for current shows.

The Gallery is situated in the old Gospel Hall, which is on the Dereham Road junction with Grapes Hill, 5 St Benedicts View, Grapes Hill, NR24HH.

Telephone 01603 666039. Mobile 07714 103963.  
[www.redlightgallery.co.uk](http://www.redlightgallery.co.uk).

# The South Asian Decorative Arts and Crafts Collection Trust



Established in 2010, the Trust's objectives are to conserve a record of, and promote an interest in the arts, crafts and culture of South Asia and neighbouring regions. The collection includes pictures, prints, textiles, metalwork and ethnographic items as well as architectural items, furniture and vernacular objects.

These generally cover a period from the late 18th century to the 21st century and illustrate the everyday arts and crafts of this vibrant region.

The SADACC Trust. Registered charity number (RCN 1137415)

## Exhibition

Highlights from the permanent collection as well as a number of displays are exhibited in a magnificent Victorian skating rink, an attraction in itself.

Opening times: Open daily except Sundays and bank holidays 9.30am–5pm. Admission Free.

Tours and talks can be arranged with prior notice.

The Old Skating Rink Gallery (Country & Eastern)  
34–36 Bethel Street, Norwich, Norfolk, NR2 1NR

Tel: 01603 663890

[info@sadacc.co.uk](mailto:info@sadacc.co.uk)



[www.sadacc.co.uk](http://www.sadacc.co.uk)



*Block printed cotton panel, late 19th C.*



*Patna School. c.1830*

SADACC Trust at the  
Old Victorian Skating Rink



# Sainsbury Centre for the Visual Arts



Photo Pete Huggins

The Sainsbury Centre for Visual Arts is the first public building designed by celebrated architect Lord Norman Foster and houses the collection of Sir Robert and Lady Sainsbury, which features outstanding works of world and modern European art.

As well as inspirational architecture the Centre is a renowned public art museum with a combination of permanent collections, world-class temporary exhibitions, events, talks, workshops, clubs and outreach programmes for all ages, along with a high-quality shop and restaurant. Open Tuesday–Sunday, admission to the building and permanent collection is free.

## Exhibitions

14 September 2013– 24 February 2014

### MASTERPIECES: ART AND EAST ANGLIA

*Masterpieces: Art and East Anglia* is one of the most ambitious exhibitions in the region's recent history and is expected to attract visitors en masse. It celebrates the artistic heritage of East Anglia from antiquity through to the present day, many items on loan from prestigious museums and galleries around the world.

The exhibition comprises over 250 stunning treasures across all media: painting, sculpture, furniture, architecture, product and graphic design, jewellery, ceramics and textiles – something for everyone

An exciting programme of events accompanies the exhibition, including a lecture series and family trails.



John Sell Cotman,  
*'Storm on Yarmouth  
Beach'*, 1831,  
Norfolk Museums  
& Archaeology  
Service, Norwich  
Castle Museum &  
Art Gallery

For more information and booking visit [www.scva.ac.uk](http://www.scva.ac.uk)

Friday 13 September 2013 5pm  
Elizabeth Fry Lecture Theatre, UEA  
**INAUGURAL EVENT WITH MAGGIE HAMBLING**

Maggie will be in conversation about the masterpiece with guest curator, Ian Collins.  
Tickets: £8, £6 concessions, SCVA Friends only\*

## MASTERPIECES: ART AND EAST ANGLIA LECTURE SERIES

Thursdays 7pm–8.30pm

19, 26 September

3, 10, 17, 24, 31 October

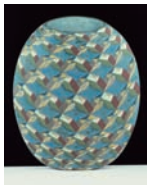
7, 14, 21, 28 November

5, 12, 19 December

Elizabeth Fry Lecture Theatre

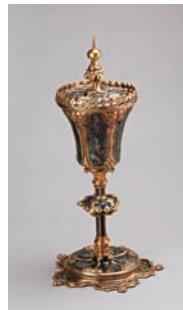
A lively critics' forum chaired by Marjorie Allthorpe Guyton gets this series off to a flying start with weekly lectures by experts including Elizabeth Fritsch, artist on her work; Frances Spalding, art historian and writer talking about John Piper and Benjamin Britten; Colin Self, artist in discussion about his work; Charlotte Crawley, Director East Anglia Art Foundation on Cotman and the Norwich School; Julia Blackburn, writer on John Craske and the Sea; Ronald Blythe, writer in discussion about his work; Simon Thurley, Director English Heritage on Kings Lynn and the Kings Lynn cup.

Tickets: £8, £6 concessions, booking essential



*Drawing the Sea (Self Portrait), 2011–2012, Maggi Hambling (b.1945). Courtesy of the artist*

*'Quantum Pocket', 1984, Elizabeth Fritsch, (b.1940). Courtesy of the artist*



*'King John Cup', c. 1325, Unknown maker, courtesy of Borough Council of King's Lynn and West Norfolk*



*Photo: Andi Sapey*



*'Lotus Type 72', 1970–1975, designed by Colin Chapman, Maurice Phillippe and Tony Rudd, constructed by Team Lotus, courtesy of Classic Team Lotus*

### TICKET INFORMATION FOR MASTERPIECES

Tickets £8 (£6 concs) adult, £20 family ticket.

Prices for *Masterpieces* have been kept as low as possible to encourage people to come back as often as they want to.

Tickets for the exhibition can be booked in advance either online at [www.scva.ac.uk](http://www.scva.ac.uk) (click on *Masterpieces* image) or by telephone on 01603 598616.

Lines are open 9.30am–6pm Monday–Saturday.

*\*Inaugural event open to Friends of the Sainsbury Centre, booking essential. To become a Friend call 01603 593199.*

## Permanent exhibition

### THE ROBERT & LISA SAINSBURY COLLECTION

#### The Living Area

Sir Robert and Lady Lisa Sainsbury spent a life-time gathering artefacts from around the world and supporting new artists. They nurtured people they believed in and amongst them was Sir Norman Foster who they commissioned to design the Sainsbury Centre at UEA to house their collection for the benefit of academic study.

The collection features work spanning 5,000 years. Modern work by artists such as Henry Moore, John Davies and Alberto Giacometti sit alongside art from Africa, the Pacific, the Americas, Asia, Egypt, medieval Europe and the ancient Mediterranean.

The Centre holds the largest collection of early Francis Bacon in Northern Europe and there are also superb works from Picasso and Modigliani. The Lisa Sainsbury Collection of Modern Pots includes work from Lucie Rie, Rupert Spira and Hans Coper and there is the ever-popular Anderson Collection of Art Nouveau, currently on display on the mezzanine as the First Moderns.

The reserve collection has been moved upstairs and is on display at the East end.



*Bucket man. John Davies (b. 1946).  
England. 1974. Mixed media. h.  
210.0 cm; base 152.4 x 137.2 cm.  
Acquired from the artist 1974.*



*Robert & Lisa Sainsbury Collection  
Figure of a walking hippopotamus  
Egypt Dynasty XII; c.1880 BC*

#### Opening times:

10am–8pm Tuesday to Friday

10am–5pm Saturday and Sunday.

Closed on Mondays and bank holidays.

Admission to the Sainsbury Centre  
and permanent collections is free.

#### ***Did you know that the Sainsbury Centre has...***

- *Objects from every continent*
- *The biggest collection of Francis Bacon in Northern Europe*
- *Drawings by Picasso and portraits by Modigliani*
- *Sculptures & drawings by Henry Moore & Alberto Giacometti*
- *Degas' 'Little Dancer' bronze sculpture*
- *The Lisa Sainsbury collection of ceramics including many pieces by Hans Coper and Lucie Rie*
- *One of the best Art Nouveau collections in the UK*
- *Restaurant overlooking the Sculpture Garden*
- *A new shop and coffee bar opening late summer*

## Stew Gallery & Artists' Studios



Stew is an artist-led non-profit making project based in a former handbag factory in the heart of the creative sector in Norwich. The main ethos is to provide access to the arts by offering affordable gallery, studios and screen printing facilities to artists and frequent open access shows from local and national artists.

**STEW GALLERY** offers an open submission space for artists in addition to curated shows by Stew members, with work by both emerging and established creatives from both national and international backgrounds. It is open to the public and provides a platform for creative practitioners to show, sell and promote their work.

All exhibitions and events are free entry.

**STEW PRINT ROOMS** The Screen Print Rooms at Stew have been set up to complement the Stew Gallery and Artists' Studios and to provide the general public with affordable screen printmaking facilities in textiles and paper. It is run by professional artists who are passionate about printmaking and have a wealth of professional experience.

**STEW STUDIOS** The studios at Stew provide affordable spaces for artists. Being mainly open plan with natural light provided by sky lights and large windows the space is friendly, open and creative. Rents are low in keeping with our philosophy of accessibility.

### Exhibitions

25 October–2 November 11am–6pm

#### STEW PRESENTS: PRINT ODYSSEY

An open submission show in its third year presenting work from national and international print makers and artist using print as their medium.

Preview 24 October 2013 6.30–9.30pm  
Open daily

Enquiries email: [marcus@stew.org.uk](mailto:marcus@stew.org.uk) or [jo@stew.org.uk](mailto:jo@stew.org.uk)  
Stew, 40 Fishergate Norwich Norfolk NR3 1SE



## A quick guide to art in Norwich



*View of Norwich from City Hall towards Norwich Castle*

Norwich is a medieval city which, in its hey-day, rivalled London in terms of size and was for many years England's second city, being only 100 miles from the court of London. It was a wealthy city with its fame built on textile trade, weaving and particularly wool. Nearly half of the population was French, Dutch or Flemish and engaged in the weaving trade – hence the name of the football club, the Canaries, called after the birds which the weavers kept for company.

In the Industrial Revolution, Norwich was off the beaten track for commerce and transport and so attracted artists, philosophers and radical thinkers, and was home to the famous Norwich School of Painters. Many religious non-conformists also settled here and the place became a hotbed for artists and writers, as it is today. It is also now a UNESCO City of Literature.

Amongst its many cultural assets Norwich can claim:

Norwich University of the Arts, one of the best universities for courses in animation and film, fine art and illustration, games design, graphic design, media and much more, including the Gallery in St George's Street.

Norwich Castle and the Sainsbury Centre for Visual Arts – world-class venues, attracting national-level touring shows, with permanent collections of work by Picasso, Henry Moore, Francis Bacon, Modigliani, Degas as well as local masters – Munnings and the Norwich School of Painters including contemporary work from artists such as Colin Self.

Norfolk and Norwich Festival, an international multi-arts annual festival with 17 days of concerts, outdoor arts and theatre, both mainstream and left-field, as well as an increasingly innovative and site-specific visual arts programme.

Norwich Arts Centre is also a multi-arts venue with a visual art programme which includes live art, photography and digital art. Norwich Cathedral is developing its events programme.

There are a number of artist-led galleries and studios, notably OUTPOST and Stew, and more recently Red Light Gallery – offering photography and darkroom facilities – and some well-established and very active, artists' groups such as Norfolk Contemporary Arts Society, Anteros Arts and Norwich 20 Group. Sculpture for Norwich is a charity which promotes and fundraises for more public sculpture.

The Forum Trust, Assembly House, St Margaret's Church all support artists and host exhibitions and there are several small commercial galleries such as Art 18|21 and Mandell's. As well as Art in Norwich partners, there are over 800 practising visual artists and groups in Norfolk and a thriving underground arts scene in addition to the main institutions. [www.artinnorwich.org.uk](http://www.artinnorwich.org.uk)



## Art in Norwich members and venue details

- 1 Anteros Arts Foundation, 7–15 Fye Bridge Street, NR3 1LJ Tel: 01603 766129 [www.anteros.co.uk](http://www.anteros.co.uk)
- 2 Art 18|21, Augustine Steward House, 14 Tombland, NR3 1HF Tel: 01603 763345 [www.art1821.com](http://www.art1821.com)
- 3 Assembly House & Noverre Gallery, Theatre Street, NR2 1RQ Tel: 01603 626402 [www.assemblyhousenorwich.co.uk](http://www.assemblyhousenorwich.co.uk)
- 4 The Forum, Millennium Plain, NR2 1TF Tel: 01603 727950 [www.theforumnorwich.co.uk](http://www.theforumnorwich.co.uk)
- 5 Mandell's Gallery, Elm Hill, NR3 1HN Tel: 01603 626892 [www.mandellsgallery.co.uk](http://www.mandellsgallery.co.uk)
- 6 Norwich Arts Centre, St Benedicts Street, NR2 4PG Tel: 01603 660352 [www.norwichartscentre.co.uk](http://www.norwichartscentre.co.uk)
- 7 Norwich Castle Museum & Art Gallery, Norwich Castle, Castle Hill, NR1 3JU Tel: 01603 493625 (Mon–Fri) [www.museums.norfolk.gov.uk](http://www.museums.norfolk.gov.uk)
- 8 Norwich Cathedral, The Close, Tombland, Norwich NR1 4EH Tel: 01603 218300 [www.cathedral.org.uk](http://www.cathedral.org.uk)
- 9 The Gallery at Norwich University of the Arts, St George's Street, NR3 1BB Tel: 01603 756247 [www.nua.ac.uk](http://www.nua.ac.uk)
- 10 OUTPOST Gallery, 10b Wensum Street, NR3 1HR Tel: 01603 612428 [www.norwichoutpost.org](http://www.norwichoutpost.org)
- 11 Sainsbury Centre for Visual Arts, University of East Anglia, NR4 7TJ Tel: 01603 593199 [www.scva.ac.uk](http://www.scva.ac.uk)
- 12 Red Light Gallery 5 St. Benedict's View, Grapes Hill, NR2 4HH Tel: 01603 666039 [www.redlightgallery.co.uk](http://www.redlightgallery.co.uk)

## Art in Norwich : contact details

- 13 Stew Gallery & Artists' Studios, 40 Fishergate NR3 1SE [www.stew.org.uk](http://www.stew.org.uk)
- 14 South Asian Decorative Arts & Crafts Collection Trust, The Old Skating Rink Gallery, 34–36 Bethel Street, NR2 1NR [www.sadacc.co.uk](http://www.sadacc.co.uk) Tel 01603 663890
- 15 Targetfollow at Theatre Royal, Theatre Street, NR2 1RL [www.targetfollow-arts.co.uk](http://www.targetfollow-arts.co.uk) email: [sarah.cannell1@gmail.com](mailto:sarah.cannell1@gmail.com)
- 16 Norwich Print Fair, St Margaret's Church, St Benedict's Street, Norwich NR2 4AQ [www.norwichprintfair.co.uk](http://www.norwichprintfair.co.uk)

### Other venues used by members for exhibitions and events

- 16 St Margaret's Church, St Benedict's Street, Norwich NR2 4AQ \*Not open all the time
- 17 The Undercroft, beneath Memorial Gardens, Norwich Market \*Not open all the time email [clare.hubery@norwich.gov.uk](mailto:clare.hubery@norwich.gov.uk)

### Member organisations without venues

Festival of Architecture Norwich Norfolk [www.fann.org.uk](http://www.fann.org.uk)

Norfolk Contemporary Arts Society  
email: [j63bevington@btinternet.com](mailto:j63bevington@btinternet.com) [www.n-cas.org.uk](http://www.n-cas.org.uk)

Norwich Fringe Festival Tel: 07946 261651  
[www.norwichfringefestival.co.uk](http://www.norwichfringefestival.co.uk)

Norwich 20 Group email: [n20gnoticeboard@gmail.com](mailto:n20gnoticeboard@gmail.com)  
[www.norwich20group.co.uk](http://www.norwich20group.co.uk)

Culture Shift Email: [info@theshiftnorwich.org.uk](mailto:info@theshiftnorwich.org.uk)  
Tel 07946 261651 [www.theshiftnorwich.org.uk](http://www.theshiftnorwich.org.uk)



August 2013–March 2014

# Art in Norwich

What's on? – a round-up of visual art, sculpture and architectural events in Norwich



Art in Norwich partners are:



NORWICH  
UNIVERSITY  
OF THE ARTS



+  
NORWICH  
CATHEDRAL



NORFOLK  
CONTEMPORARY  
ART SOCIETY



SAINSBURY  
CENTRE  
for Visual Arts

SADACC  
Trust



Shift Norwich

Art in Norwich produced by The Shift Norwich  
[www.artinnorwich.org.uk](http://www.artinnorwich.org.uk)



Art in Norwich