

NORWICH
20 GROUPS
70 YEARS
1944 - 2014



Art in Norwich

‘What’s on?’

a round-up of visual art, sculpture
and architectural events in Norwich

March–August 2014

Exhibitions at a glance : March to August 2014

7 Feb–21 March	Anteros Arts : Jack Coleman: INTRODUCTIONS	7
14 Feb–14 Dec	SCVA : SENSE AND SENSUALITY: Art Nouveau 1890–1914	36
MARCH		page
Until 24 April	Theatre Royal : N20G – 70th ANNIVERSARY EXHIBITION	43
To 14 December	SCVA : SENSE AND SENSUALITY : Art Nouveau 1890–1914	36
2–29 March	Mandell's Gallery : MARTIN BATTYE	15
2–21 March	OUTPOST Gallery : GABRIELLA BECKHURST	34
3–15 March	The Forum : NORFOLK CONTEMPORARY ART 2014	12 & 21
7 March–3 May	Assembly House : SPRING FORTH!	10
8 March–27 April	Norwich Cathedral : JOHN McLEAN STAINED GLASS	24
11 March–5 April	NUA Gallery : JERWOOD PAINTING FELLOWS	31
17–31 March	The Forum : '20 NOW 70' ANNIVERSARY EXHIBITION	13 & 28
17–31 March	The Undercroft : '20 GROUP UNDERGROUND'	28
18 March–24 May	Bridewell Museum : N20G 70 years 1944–2014	28
24–29 March	Anteros Arts : NUA BA (Hons) FINE ART 2nd YEAR SHOW	7
29 March–27 July	SCVA : MONUMENT : Aftermath of War & Conflict	37
APRIL		page
To 24 April	Theatre Royal : N20G 70th ANNIVERSARY EXHIBITION	43
To 27 April	Norwich Cathedral : JOHN McLEAN STAINED GLASS	24
To 3 May	Assembly House : SPRING FORTH!	11
To 24 May	Bridewell Museum : N20G 70 YEARS 1944–2014	28
To 27 July	SCVA : MONUMENT : Aftermath of War & Conflict	37
To 14 December	SCVA : SENSE AND SENSUALITY: Art Nouveau 1890–1914	36
To March 2015	SCVA : HENRI MATISSE : The Backs	37
2 April–2 May	Anteros Arts : RICHARD ROBINSON	7
2–21 April	OUTPOST Gallery : LILI REYNAUD-DEWAR	34
5–26 April	Mandell's Gallery : NICOLA SLATTERY	15
25 April–24 July	Theatre Royal : CORNELIA FITZROY	43
26 April–24 August	SCVA : JOHN VIRTUE : The Sea	37
24 April–24 May	NNFestival at NUA Gallery : TIM DAVIES WITHIN	23 & 32
30 April–10 May	Norwich Cathedral : NORFOLK SCRIBES	24



Cover: Detail from *Bird and Crab Apples*
Joceline Wickham.

Note from the editor:

Welcome to Spring 2014 Art in Norwich

This season we have many exciting new events as well as some familiar faces and a couple of special occasions.

Norwich 20 Group is 70 years old this year and has several exhibitions to celebrate. We wish all members (many more than 20 now) the best of luck for the next 70 years!

The Young Norfolk Arts Festival is in its second year, and has an exhibition at The Hostry this year and the Norwich School Art and Design Exhibition is at The Forum 27 June–6 July.

In the At a Glance to the left, the green strips indicate longer-running exhibitions that last beyond the month in which they start.

MAY	EXHIBITIONS AT A GLANCE	page
To 27 July	SCVA : MONUMENT Aftermath of War & Conflict	37
To 14 December	SCVA : SENSE AND SENSUALITY: Art Nouveau 1890-1914	36
To March 2015	SCVA : HENRI MATISSE : The Backs	37
To 24 May	NNFestival NUA Gallery : TIM DAVIES WITHIN	23 & 34
To 24 May	Bridewell Museum : N20G 70 years 1944-2014	28
To 24 July	Theatre Royal : CORNELIA FITZROY	43
To 24 August	SCVA : JOHN VIRTUE : The Sea	37
2-21 May	OUTPOST Gallery : JESSICA WARBOYS	34
3-25 May	Mandell's Gallery : JENNY CREAMY	15
7 May-14 June	Anteros Arts : WEX PHOTOGRAPHIC GROUP SHOW	7
9-24 May	Cathedral Close NN Festival : STEPHEN BRANDES	22
9-18 May	Undercroft NNFestival : KATHY HINDE TIPPING POINT	23
9 May-28 June	Assembly House : PRINT SHOW	11
15 May	NCAS TATE-À-TATE – An NCAS day trip	21
15 May-1 June	Norwich Cathedral : YARNS IN THE CATHEDRAL	25
23 May-8 June	Salthouse Church : CHLOE MANDY : THE NECESSARY ANGEL	40
24 May-14 Sept	Norwich Castle : THE WONDER OF BIRDS	27
JUNE		page
To 8 June	Salthouse Church : CHLOE MANDY : THE NECESSARY ANGEL	40
To 28 June	Assembly House : PRINT SHOW	11
To 14 June	Anteros Arts : WEX PHOTOGRAPHIC GROUP SHOW	7
To 24 July	Theatre Royal : CORNELIA FITZROY	43
To 24 August	SCVA : JOHN VIRTUE : The Sea	37
To 14 September	Norwich Castle : THE WONDER OF BIRDS	27
To 14 December	SCVA : SENSE AND SENSUALITY: Art Nouveau 1890-1914	36
To March 2015	SCVA : HENRI MATISSE : The Backs	37
Thro' June	Mandell's Gallery : SUMMER SHOW	15
2-21 June	OUTPOST Gallery : WILLIAM BLACK	34
4-14 June	Norwich Cathedral : N & N ART CIRCLE 185th EXHIBITION	19 & 25
7 June-15 Mar '15	Norwich Castle : AN EYE FOR COLOUR: Cotman	26
14-29 June	St Nicholas' Church, Salthouse : Elizabeth Peer	40
17-28 June	Norwich Cathedral : NUA – BISHOP'S ART PRIZE	25
18 June-19 July	Anteros Arts : HEATHER TAMPLIN	7



The Undercroft

The Norfolk & Norwich Festival is on the horizon, including an exciting visual art programme and the ever-popular Open Studios which takes place 24 May-8 June and spreads across the whole of Norfolk. You can find out who's taking part at www.nnopenstudios.org.uk.

Of course, there is also a big programme of impressive international festival events from 9-24 May so make sure you check out their website www.nnfestival.org.uk and book early is my advice.

Several organisations are exhibiting in the Undercroft, beneath the Memorial Gardens this year, a relatively new space for artists to use. Exciting!

The Sainsbury Centre and Norwich Castle both have long-running exhibitions, including Matisse sculptures, birds, Art Nouveau and Cotman watercolours – we are lucky to have such venues on our doorstep as well as many artist groups, studios and galleries.

www.artinnorwich.org.uk

21–24 July	The Forum : LONELY ARTS CLUB ANNUAL SHOWCASE	13 & 14
27 June–6 July	YOUNG NORFOLK ARTS FESTIVAL	25
30 June–5 July	The Forum : NOVA ARTS	13
JULY	page	
To 14 December	SCVA : SENSE AND SENSUALITY: Art Nouveau 1890–1914	36
To 19 July	Anteros Arts : HEATHER TAMPLIN	7
To 24 July	Theatre Royal : CORNELIA FITZROY	43
To 24 August	SCVA : JOHN VIRTUE : The Sea	37
To March 2015	SCVA : HENRI MATISSE : The Backs	37
To 15 March 2015	Norwich Castle : AN EYE FOR COLOUR: Cotman	26
2–8 July	NUA: BA DEGREE SHOWS	32
4 July–30 August	Assembly House : EAST	11
5–20 July	Salthouse Church, Salthouse : SARAH CANNELL	41
6–10 July	The Forum : NORFOLK WATERCOLOUR ART	13
12 July–31 August	Norwich Castle : Open Show INSPIRED BY BIRDS	27
15–22 July	Narthex Cathedral of St John the Baptist : JOINED UP ART	16
15–26 July	Norwich Cathedral : NORWICH & DIST. PHOTO. SOCIETY	25
17 July–4 August	Mandell's Gallery : GARRY RAYMOND-PEREIRA	15
25 July–24 October	Theatre Royal : FIONA ROBERTS	43
26 July–10 August	Salthouse Church, Salthouse : NOT YET DEAD NEARLY	41
21–24 July	The Forum : LONELY ARTS CLUB ANNUAL SHOW	13 & 14
28 July–3 August	The Forum : JOHN PATCHETT ART	13
AUGUST	page	
To 10 August	Salthouse Church, Salthouse : NOT YET DEAD NEARLY	41
To 24 August	SCVA : JOHN VIRTUE : The Sea	37
To 30 August	Assembly House : EAST	11
To 31 August	Norwich Castle : Open Show INSPIRED BY BIRDS	27
To 24 October	Theatre Royal : FIONA ROBERTS	43
To 14 December	SCVA : SENSE AND SENSUALITY: Art Nouveau 1890–1914	36
To 15 March 2015	Norwich Castle : AN EYE FOR COLOUR: Cotman	26
3–9 August	St Margaret's Church : NAKED IN NORWICH	29
7–21 August	Anteros Arts : BRECKLAND ARTISTS GROUP	7
ADVANCE NOTICE	September 2014 Undercroft LONELY ARTS CLUB	14
	October 2014 Undercroft : Norwich Fringe Festival	
	24 Nov–24 Jan 2015 Theatre Royal RICHARD MATTHEWS	43



Art in Norwich is produced by The Shift as a companion to **Music in Norwich**, a roundup of concerts and music events in Norwich which you can find on www.musicinnorwich.org.uk or printed copies around the city. The next edition is due out in April lasting to September.

More information about The Shift (Culture Shift, Design Shift, Digital Shift and Shift Publishing) can be found at www.theshiftnorwich.org.uk, where you can also find an overview of Norwich culture and other useful information.

You can also sign up for culture updates via Culture Shift on the website.

Errors and omissions excepted, info is checked as well as possible but cannot be guaranteed.

If you require copies to display please email info@theshiftnorwich.org.uk

About Art in Norwich

This programme is the result of a collaboration between a number of organisations who promote visual art, public art, craft and architecture in and around Norwich in Norfolk. The aim is to gather visual art listings in one place so that they are easy to find and also to offer an overview of art activity and infrastructure across the city and throughout the year. The Art in Norwich Forum is a self-supporting partnership of visual art groups and organisations active in Norwich and the surrounding area.

We hope you will keep this booklet safe as it covers six months' programming. Because of space limitations and lots going on, exhibition and event details are brief but you can find out more from individual organisations and venues from their own websites. See page 47 for contact and venue details.

Please also visit our website at www.artinnorwich.org.uk where you can download a pdf of this programme.

Important: All information is subject to change - please check with individual organisations before travelling to an event.

Image : Maurice Bouval (1863–1916) Sleep or Woman with Poppies, 1900, Arwas Archives Photo: Pete Huggins



**SAINSBURY
CENTRE**
for Visual Arts
www.scva.ac.uk

New exhibition
Sense and Sensuality:
Art Nouveau 1890-1914

14 February – 14 December 2014

ANTEROS

ART MATERIALS LTD



Follow us on
Twitter @AnterosArtsShop
Facebook /anterosartmaterials
www.anteroscreative.com



Stockist of the finest art supplies and materials



Open Monday to Saturday from 9am to 5pm
Find us at 7-15 Fye Bridge Street, Norwich NR3 1LJ
Telephone 01603 611055 enquiries @anteroscreative.com
Quality art materials at discount prices

10% student discount!
with current student ID

Anteros Arts Foundation



Anteros Arts Foundation is an arts venue in the city centre. We are committed to developing the arts, offering art courses and tuition, as well as presenting professional exhibition space.

The evening classes, life drawing, weekend classes and masterclasses are all designed to develop individual creativity as well as technical skills. Inspiring venues and small classes provide a unique atmosphere in which to learn and explore ways to make art, away from the demands of daily life.

More details on www.ateros.co.uk
Anteros Arts Foundation, 7–15 Fye Bridge Street
Norwich Norfolk NR3 1LJ Tel: 01603 766129

Exhibitions

Friday 7 February–Friday 21 March

Jack Coleman: INTRODUCTIONS

First Norfolk exhibition of new landscape and still life paintings in oils by this exciting young artist.



*'Impending Storm',
Richard Robinson*

Monday 24–Saturday 29 March

NUA BA (Hons) FINE ART 2ND YEAR SHOW

Interim exhibition curated and organised by 2nd year art students at Norwich University of the Arts.

Wednesday 2 April–Friday 2 May

RICHARD ROBINSON : PAINTINGS, CONSTRUCTIONS AND ASSEMBLAGES

Large scale oil paintings of imaginary landscapes and constructions relating to sculpture and architecture.

Wednesday 7 May–Saturday 14 June

WEX PHOTOGRAPHIC GROUP SHOW

New work from regional and national photographers.

Wednesday 18 June–Saturday 19 July

HEATHER TAMPLIN

New graphic paintings, drawings and a sound installation based on beehives.

Thursday 7 August–Thursday 21 August

BRECKLAND ARTISTS' GROUP

New works from this local artists' group.



Norfolk Contemporary Art Society at Felbrigg Hall

The Tourists

Felbrigg Hall, Norfolk, 3 May-31 October 2014



'crave', 2012 by Kate MccGwire

This Spring and Summer an exhibition of newly commissioned artworks will enliven the house and orangery at Felbrigg Hall, a National Trust property in North Norfolk. Stories of Felbrigg's former inhabitants, tales from the Grand Tour, country pursuits and the habitats of birds will be explored in the sculpture, photography and installation art on show

Three artists from outside Norfolk: Gayle Chong Kwan, Kate MccGwire and Claire Morgan have been commissioned to make artistic responses to Felbrigg and its contents and stories. They have visited, researched and absorbed the atmosphere of the house and gardens, and made their work with the fascinating collections of books, paintings and objects at Felbrigg in mind. The resulting sculpture and installation art will be unveiled in May 2014 and will be on display throughout the summer season.

For opening times see: nationaltrust.org.uk/felbrigg-hall

The exhibition is curated by Caroline Fisher from NCAS.

The Tourists is a new collaboration between the Norfolk Contemporary Art Society and the National Trust, and is supported by grants from the Arts Council, NCAS & EAAF.



Olivia Fraser



Alec Cumming

Art 18/21 Gallery and Art Advisers

Specialists in 18th to 21st century
South Asian art and modern and contemporary British art
Art 18/21 represents the young British artist Alec Cumming

Exhibition: 2 May–21 June: Olivia Fraser

see website for future exhibitions

Art 18/21, The Old Skating Rink Gallery, 34–36 Bethel Street,
Norwich, Norfolk NR2 1NR

Tel: +44 07879 673419 www.art1821.com



Assembly House and Noverre Gallery and Shop



The Assembly House is a proud supporter of the Arts and hosts exhibitions, concerts, lectures and plays on a regular basis. The wonderful Noverre Gallery and Shop sells British art and crafts including prints, ceramics, jewellery, cards and wrapping paper, including a collection of attractive textile items by resident artist Lottie Day.

A variety of exciting exhibitions is planned this year and further information on all arts events can be found in the quarterly Assembly House arts programme and brochure, available at the House and online at: www.assemblyhousenorwich.co.uk

All exhibitions listed are open from 9am to 5pm,
Monday to Saturday, admission free.

Exhibitions

Friday 7 March–Saturday 3 May
SPRING FORTH!

This vibrant exhibition will capture the colour and wonder of the new season, with original prints, lino-cuts and cards of flowers, birds, the coast, countryside and more. Work by popular UK artists Vicky Oldfield, Liz Toole, Fiona Carver, Louise Davies, Clare Curtis, Nicky Loutit and Julia McKenzie will be on display, with prices ranging from £50 to £500. Plus Lottie Day will be introducing her new range of hand-made textiles – aprons, tea towels, cushions, lampshades, shopping bags and napkins – with spring as their theme.



Liz Toole



Lottie Day



Liz Toole

Friday 9 May–Saturday 28 June ASSEMBLY HOUSE PRINT SHOW

Featuring work from accomplished printmakers from across the country, this exciting annual exhibition includes lino-cuts and screen-prints by popular artists Linda Farquharson, Pam Grimmond, Chris Andrews and more.

The Assembly House is also home to a welcoming Café/Bar and Restaurant and is well-known for its wonderful coffee and cakes and traditional afternoon tea. The building is located next to the Norwich Theatre Royal and the pre-theatre dinner is also very popular.

For more information please contact:
The Assembly House, Theatre Street,
Norwich, NR2 1RQ Tel: 01603 626402.
Email: admin@assemblyhousenorwich.co.uk
Website: www.assemblyhousenorwich.co.uk
Registered charity no: RCN 1111391.

Friday 4 July–Saturday 30 August EAST

Showcasing work by some of the very best East Anglian artists, this summer exhibition is not to be missed! This wonderful region offers a treasure trove of subject matter, from its fabulous coast and countryside to city scenes, village life and more.

Mandy Walden



The Forum



The Forum, right in the heart of Norwich city centre, is home to a year-round programme of FREE exhibitions, activities, markets and digital shows. It's also a great place to grab a coffee, a pizza or, of course, to explore the busiest public library in the UK.

The Forum's website has information on day-to-day events going on in the huge, glass Atrium, and in the Fusion Gallery. There are also courses, classes and talks going on in the library and regular music and conversation gatherings in Café Bar Marzano.

You can also follow The Forum on Twitter – @TheForumNorwich – and Facebook – The Forum, Norwich – for updates, images and videos.

This year's programme of events is already packed to the gunnels with an eclectic mix of art, literature, dance, music, sport, nature, history and heritage. The Forum is open seven days a week so drop in anytime and see what's going on.

Exhibitions



Monday 3–Saturday 15 March

NORFOLK CONTEMPORARY ART 2014

A free exhibition of some of the best contemporary work from Norfolk based artists. Artwork is for sale. This biennial show at The Forum has become a regular and much anticipated part of the contemporary art calendar.



Natalie Lang



Abstract painting David Lindsay

Monday 17–Sunday 31 March
'20 NOW 70' ANNIVERSARY EXHIBITION

A free exhibition celebrating the 70th anniversary of the Norwich 20 Group and the diversity of work produced by its members over the years.

Monday 30 June–Saturday 5 July
NOVA ARTS

North Norfolk Organisation of Visual Artists returns to The Forum.

Sunday 6–Thursday 10 July
NORFOLK WATERCOLOUR ART

Monday 21–Thursday 24 July
LONELY ARTS CLUB ANNUAL SHOW

Monday 28 July–Sunday 3 August
JOHN PATCHETT ART



John Patchett

We have regular exhibitions by local artists so please visit the website for updated information:
www.theforumnorwich.co.uk

Lonely Arts Club



'Test Pattern/Downward Strike' Aaron Fickling

2014 is an exciting year for the eclectic group of painters, sculptors, printmakers and constructivists that comprise The Lonely Arts Club.

Since the Autumn of 2013, the LAC has strengthened its cause by selecting a small number of new up-and-coming and mid-career artists to join the established collective.

Currently, The Lonely Arts Club are working to put together an engaging programme of large scale group exhibitions and smaller curated shows throughout the city of Norwich.

Exhibitions

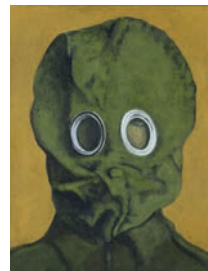
Monday 21–Thursday 24 July
LAC ANNUAL SHOWCASE
The Forum Millennium Plain, Norwich

September 2014
LAC IN THE UNDERCROFT
(beneath the Memorial Gardens)
City Hall, St Peter's Street, Norwich.

A new website is planned for early 2014.
Details of all future shows and other
news will be posted at:
thelonlyartsclub.org.uk



'Sadu' Kev Lee



'The Addiction' David Sullivan



'Tail Dragger' Andy Sloan



*'Elements of Landscape'
Richard Robinson*

Mandell's Gallery



Mandell's Gallery is one of Norwich and Norfolk's most respected commercial art galleries. Mandell's Gallery was founded in 1965. Originally specialising in 19th century Norwich School painters, the gallery has expanded greatly and now has a diverse collection of traditional and contemporary art, offering opportunities for many new and local artists as well as more established names. You are welcome to view the collection at the art gallery, situated on the beautiful and historic street of Elm Hill, near Norwich Cathedral.

More info www.mandellsgallery.co.uk Tel 01603 626892.

Exhibitions

Sunday 2–Saturday 29 March

MARTIN BATTYE

Martin has combined a career of painting with designing. Born in Suffolk, is a member of the Norwich 20 Group. *"I find I have less and less to say about the paintings I make: I am happy to be led on the journey they take me on."*

Saturday 5–Saturday 26 April

NICOLA SLATTERY

Nicola's subjects are almost exclusively figurative and sometimes inspired by fiction or myth.

Saturday 3–Sunday 25 May

JENNY CREASY (1941–2010)

This show includes early figurative work from the 1960s and later large-scale abstraction. Early connection with St. Ives painters like Roger Hilton seem to have been absorbed within Creasy's mature creative expression.

June: MANDELL'S GALLERY SUMMER SHOW

Mixed exhibition of traditional & contemporary fine art.

Thursday 17 July–Monday 4 August

GARRY RAYMOND-PEREIRA

A Norwich based painter, his land and seascapes are powerful realistic representations full of atmosphere, and often moody.



Cathedral of St John the Baptist: The Narthex



The Narthex is the visitor centre, at the Cathedral of St John the Baptist. It was opened in 2010, the culmination of a ten-year project at the Cathedral to provide a fitting welcome for all its visitors.

Funded by the Heritage Lottery Fund together with grants from a number of charitable trusts and many donations from individuals, it has given the Cathedral a wonderful new lease of life and made it truly accessible to everyone.

The Narthex is situated behind the main building to the right of the main entrance in Earlham Road.

The Narthex comprises an Education & Interpretation Gallery, a shop, a refectory with outdoor patio, a function hall, licensed bar and community garden.



With level-access and excellent facilities, it is an ideal location to discover more about the Cathedral or just to relax in a beautiful and tranquil setting.

Exhibition

Tuesday 15–Tuesday 22 July
JOINED UP ART: Art in all media 2014



The Narthex is pleased to host their second summer art exhibition after the success of the 2013 show.

The show has been selected from an open submission process and includes both well-established and emerging artists from around the region.

The exhibition will take place in The Narthex from Tuesday 15 July to Tuesday 22 July 2014 from 10.30am to 4pm and is open to all and will include all art forms.

Entrance to the exhibition is free of charge for visitors.

Cathedral of St John the Baptist: The Narthex



Garden



*'St Charles Lwanga's
Flame' John Nicholson*



*'Sculpture'
Dennis Foster*

Why not combine your visit to the Narthex with a morning coffee, a delicious lunch or afternoon tea in the refectory and patio cafe?



Our refectory is open Tuesday to Saturday from 10.30am to 4pm. The Narthex has level-access throughout and parking is available.

As well as the stunning Cathedral, there is also a delightful garden to explore and enjoy.

For more information please contact Jane France
Tel: 01603 724381
Email: assistant@sjbcathedral.org.uk
Website: www.sjbcathedral.org.uk

The Narthex, Cathedral of St John the Baptist
Earlham Road, Norwich NR2 3RB



HUDSON Architects

World class creative design

Hudson Architects is an award-winning architecture and design practice based in Norwich, Holt and London working throughout the UK and internationally.

The practice is renowned for modern, innovative design across a wide variety of projects including private one-off homes, urban and rural regeneration and community buildings and spaces with a specialist interest in the arts.

Previous award-winning schemes include OPEN Youth Venue in Norwich and Salvation Army in Chelmsford. We are currently working on the design and development of a new public gallery for Norwich University of Arts.



Norfolk & Norwich Art Circle



Founded in 1885 the Norfolk and Norwich Art Circle has been part of the cultural scene for almost 130 years. It exhibits at least twice a year in Norwich to showcase the best work of nearly 200 members. A wide range of work from traditional to modern in both subject and style can be seen from a group of professional and good amateur artists.

We provide a programme of demonstrations and talks for our members as well as visits to studios, galleries and workshops. The Art Circle also has its own Life Group once a month.

Exhibition

Wednesday 4–Saturday 14 June

9.30am–4.30pm Sundays 12pm–3pm

NORFOLK AND NORWICH ART CIRCLE 185th
EXHIBITION OF PAINTINGS AND SCULPTURE

Norwich Cathedral Hostry Admission free



Dinah at Iken by David Talks



Duck à l'Orange by Clive Brookes

We welcome new members who will join a group who have had the likes of Sir Alfred Munnings; Edward Seago; Jeffery Camp; Michael Andrews; Mary Newcomb; Bernard Meadows; Martin Laurance and Liz Balkwill among them. We have members who are successful in major galleries and at the RA.

Membership of the Art Circle is currently set at £20 (£30 a couple) per annum.

Contacts

Adrienne May: adriennemay@marblemudge.plus.com

Chairman, Richard Motley: r.g.motley@btinternet.com

Norfolk Contemporary Art Society



The Norfolk Contemporary Art Society, founded in 1956, is a charitable association that promotes the interests of contemporary art in Norfolk. It has acquired its own collection of paintings and sculpture, which form the basis of the holdings in post-war art in the Norwich Castle Museum & Art Gallery.

NCAS has also raised funds for public sculptures and has an on-loan collection of local artworks.

Supporting local art in many ways, NCAS mounts a lively programme of monthly events, mostly in Norwich, which includes lectures by artists, critics and art historians, gallery visits, auctions, private views and parties. They also curate exhibitions, including a large biennial open show in the Forum.

Exhibitions, trips and talks

Thursday 27 February, 7.30pm

PUBLIC GLASS ART – THIRTY YEARS OF CHANGE:

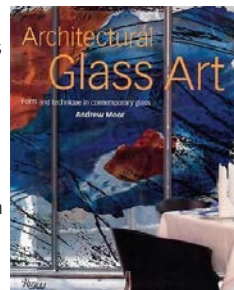
an illustrated talk by Andrew Moor
Fusion, The Forum Norwich

Andrew Moor is an architectural glass art specialist and director of Andrew Moor Associates, a company at the forefront of innovation in the development of glass art. Recent important works are on the seafront at Bridlington, at various prestigious sites in London, and we hope soon on Palace Plain in Norwich in association with Mariele Neudecker and Sculpture for Norwich.

His talk will reflect the revolutionary developments in the technology of glass making in recent years, which have allowed the flowering of a great diversity of glass art that is now visible in today's urban and architectural spaces.

Members £2.50

Non-members £4



Monday 3–Saturday 15 March
NORFOLK CONTEMPORARY ART 2014
An open exhibition in The Forum, Norwich.

Once again we are partnering with The Forum Trust to present the very best of contemporary art produced by our ncas members. This very competitive, biennial show has become a regular and much anticipated part of the contemporary art calendar.

The work has been selected by a panel, Carl Rowe (NUA), Frances Kearney (artist) and Sarah Bartholomew (SCVA), from an open submission by ncas members.

This is a great opportunity to buy some outstanding art works from the region's best artists.

For more details of events as they become available, check the website www.n-cas.org.uk.



Keith Fox

Thursday 15 May
TATE-À-TATE
An NCAS day trip

A chance to see the new rehang at Tate Britain (view at your own pace), and then a trip by Thames Clipper boat to Tate Modern, where we are booked to see the Matisse exhibition. The coach leaves Notcutts, Daniels Road, Norwich at 8am, expect to arrive back in Norwich approx 9.30pm.

Cost for transport ie coach and Thames Clipper approx. £25.

Admission prices to the Tates (for the special exhibitions) will depend on your type of membership status (Art Fund, Tate friend etc). Pay at the time.

Please advise Janey Bevington as soon as possible if you wish to come 01603 616376 or email j63bevington@btinternet.com.

NCAS events are open to both members and non-members. Members receive our programme and regular newsletter by post, and enjoy reduced rates to talks, plus excursions, invitations to private views, and other events. Membership details are on the website: www.n-cas.org.uk.





Norfolk & Norwich Festival is an international multi-arts festival running from **9–25 May 2014**. See the website for a full programme of events and booking details.

NORFOLK & NORWICH FESTIVAL VISUAL ARTS
These three projects, each involving new works commissioned especially for the Festival, ask us to consider our place in the world. Using sculpture, film, sound, light and site specificity the artists investigate our relationship to both built and natural environments, reflecting on the challenges of climate change, the historic context of a given site and an uncertain future for the natural world set against a backdrop of increasing urbanisation.

Exhibitions

**NORFOLK
& NORWICH
FESTIVAL
2014**

Stephen Brandes

THE LAST TRAVELOGUE OF ALBERT SITZFLEISCH

Friday 9 May–Sunday 25 May, All day

Upper Cathedral Close, Norwich

Multiple billboards adorn Upper Cathedral Close and imagine a future time when travel is only available to a privileged few.

Albert Sitzfleisch, a fictional traveller, reports from his journey across Europe commenting on its recent history. Excerpts from his diary are shown as short texts set against a visual backdrop of a world that has visibly changed. The images are created through digital editing of photographic collage and drawings.

Inspired by personal observations, these works address our differing perspectives on familiar histories, unfamiliar cultures and an indeterminate future, with a measured mixture of humour and poignancy.

Free

Commissioned by Norfolk & Norwich Festival and presented in partnership with Norwich Cathedral.

Supported by The Arts Council of Ireland/ An Chomhairle Ealaíon and Culture Ireland.

Stephen Brandes is represented by Rubicon Gallery, Dublin.

Tim Davies

WITHIN

Thursday 24 April–Saturday 24 May

Open Tuesday–Saturday 12–5pm

The Gallery, Norwich University of the Arts

Tim Davies' film and video works finds ways in which the human body becomes the means by which to explore the spatial and social aspects of architecture.

This exhibition includes a new film made in response to Norwich – reflecting the city's historic context and its cultural and architectural specificity. In an earlier piece, the artist's hand traces a journey along Venetian canals, capturing the city in the watery reflections, images which disintegrate whenever the fingers ripple the surface. These short films will be shown alongside other work exploring familiar and some less familiar public structures and spaces.

Free

Co-commissioned by Norfolk & Norwich Festival and Norwich University of the Arts. Tim Davies is represented by Tom Rowland Fine Art



NORFOLK
& NORWICH
FESTIVAL
2014

WORLD PREMIERE

Kathy Hinde

TIPPING POINT

The Undercroft, beneath the Memorial Gardens, Norwich

Exhibition runs Friday 9–Sunday 18 May 12–6pm

Performances Saturday 10 May & Sunday 18 May, 2pm

This is the world premiere of Kathy Hinde's kinetic sound sculpture that uses glass vessels filled with differing levels of water, set ringing by vibrating motors and tappers, to create an immersive sonic experience.

This poetic audio-visual instrument will be 'played' by the artist in two unique performances. Using electronics and feedback she will introduce live sampling and pitch shifting to introduce new levels of audio complexity reflecting the sculpture's changing water depths.

Free

A Cryptic commission for Sonica, supported by the PRS for Music Foundation Britten-Pears Foundation and The Hinrichsen Foundation with support from the University of Bristol's Scientific Glass Workshop



Norwich Cathedral



Located in the heart of Norwich in the beautiful Tombland area of the city, **Norwich Cathedral's Hostry Visitor and Education Centre** hosts a rolling programme of international, national and local exhibitions within the light and spacious exhibition hall.

As well as the exhibitions you can visit the awe-inspiring Cathedral, view the largest monastic cloister in England and enjoy the tranquillity of the Cathedral Close.

Exhibitions are in the Hostry Visitor & Education Centre, Monday to Saturday 9.30am–4.30pm and Sunday 12pm–3pm.

Exhibitions are open to all and admission is free.

Exhibitions

Saturday 22 February–Sunday 2 March
DAVID THOMPSON OF LSI ARCHITECTS, NORWICH

Gain a fascinating insight into the changing styles of drawing in the architecture industry, based on David's 35 year experience of witnessing a wide spectrum of drawing techniques, fashions and technologies.

Saturday 8 March–Sunday 27 April
JOHN McLEAN STAINED GLASS

Renowned colourist John McLean brings his artistic vision to three major new windows for Norwich Cathedral, to be dedicated on 30 March. The exhibition explores the translation of his work from design to finished glass.

Wednesday 30 April–Saturday 10 May
NORFOLK SCRIBES

An exhibition of calligraphy celebrating 30 years of Norfolk Scribes. Includes a contemporary response to the Lindisfarne Gospels.



Thursday 15 May–Sunday 1 June

YARNS IN THE CATHEDRAL

A national exhibition by the Association of Guilds of Weavers, Spinners and Dyers showcasing hand spun, hand woven and hand dyed cotton, silks, linen and art yarns. Highlights include: a lecture and book-signing by Kaffe Fassett (24 May), knitting in the Nave, sheep grazing and shearing and family drop in and try day (28 May).

Wednesday 4 June–Saturday 14 June

NORFOLK AND NORWICH ART CIRCLE

The society's annual exhibition featuring the creative work of members from across East Anglia. See page 19.



Tuesday 17 June–Saturday 28 June

NORWICH UNIVERSITY OF THE ARTS – BISHOP'S ART PRIZE

The prestigious Bishop's Art Prize exhibition returns with this year's theme '*Seasons of the Spirit*', featuring the work of final year students from Norwich University of the Arts.

Tuesday 1 July–Saturday 12 July

YOUNG NORFOLK ARTS FESTIVAL

An exciting collaborative presentation of art showcasing the work of students from schools across Norfolk.

Tuesday 15 July–Saturday 26 July

NORWICH & DISTRICT PHOTOGRAPHIC SOCIETY

View colour and monochrome prints and digital images from one of the oldest photographic societies in the country at this annual exhibition.

Please visit www.cathedral.org.uk for more details.

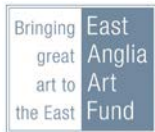
Norwich Castle Museum & Art Gallery



Built by the Normans as a Royal Palace 900 years ago, **Norwich Castle** is now home to outstanding collections of fine and decorative art, archaeology and natural history.

Alongside its own exhibitions Norwich Castle hosts a regular programme of touring shows from major galleries and museums including Tate, V&A, British Museum, the Hayward Gallery and many more.

The art programme at Norwich Castle is supported by the East Anglia Art Fund – a local charity dedicated to bringing great art to Norfolk.
www.eastangliaartfund.org.uk



Permanent Collections

The **Timothy Gurney Gallery** shows highlights from the Modern and Contemporary Art Collection whilst the **Colman Art Galleries** house the museum's world famous Norwich School paintings by John Crome, John Sell Cotman and their contemporaries.

Exhibitions

Saturday 7 June 2014–Sunday 15 March 2015

Colman Project Space and Colman Watercolour Gallery
AN EYE FOR COLOUR: John Joseph Cotman 1814–1878

This bicentenary exhibition celebrates the highly original use of colour that made this artist, son of John Sell Cotman, such an innovative member of the 19th century Norwich art scene.



John Joseph Cotman, *A Composition*, c.1860s, pencil, watercolour and bodycolour © Norfolk Museums Service (Norwich Castle Museum & Art Gallery)

For full details on exhibitions and events please see www.museums.norfolk.gov.uk

General enquiries 01603 493625 (Monday–Friday)

Bookings and information 01603 495897



Maggi Hambling, *Heron in the shallows of the Thames*
Oil on canvas 2013 © the artist



Saturday 24 May–Sunday 14 September
THE WONDER OF BIRDS
Special Exhibition Galleries, Norwich Castle

This stunning exhibition explores the cultural impact of birds upon mankind. It combines the arts, natural history, archaeology and fashion, with loans from local and national collections. It features more than 200 works by major artists and illustrators, historical and contemporary.

Saturday 12 July–Sunday 31 August
INSPIRED BY BIRDS
Timothy Gurney Gallery, Norwich Castle

East Anglia inspires all who are drawn to birds. Norfolk, Suffolk, Cambridgeshire and Essex artists have submitted work for *Inspired by Birds*, the fourth Norwich Castle Open Art Show. An experienced panel consisting of: author/artist Katrina van Grouw, sculptor Harriet Mead and wildlife photographer David Tipling will make the selection. *Inspired by Birds* is a selling exhibition.



Norwich 20 Group

NORWICH
20
GROUP
70 YEARS
1944 - 2014



Frank Pond

The Norwich 20 Group of artists was founded by Walter Watling in 1944 with the intention of raising the standard of local professional art to something worthy of the historical artistic history of the city, and this was done by selective membership and by mutual criticism and appraisal of work.

The events organised in the 70th anniversary year of the Norwich 20 Group tell the story of the artistic history, heritage and continuous freedom of artistic expression and development of the group's artists in Norwich and Norfolk.

Exhibitions

Monday 17–Monday 31 March
'20 NOW 70'

ANNIVERSARY EXHIBITION

The Forum, Norwich. Free entry
Please see pg 13.

This flagship exhibition will show work from the largest number yet of members of the group, demonstrating the diversity and range of work produced.



Oliver Creed

17–31 March '20 GROUP UNDERGROUND'

The Undercroft Beneath Memorial Gardens in front of City Hall, St Peter's Street. Free entry 12–3pm daily

To accompany the Forum show, this amazing venue will showcase some larger works, DVD and installation pieces, including work by recent graduates of NUA.

18 March–24 May

NORWICH 20 GROUP – 70 YEARS 1944–2014

An exhibition of the history of the N20G

This exhibition, curated by Clotilde Wang, brings together some of the most interesting archive material from the Norwich 20 Group's 70-year history.

The Museum of Norwich at The Bridewell,
9 Bridewell Alley, Norwich NR2 1AQ. Tel: 01603 667 228
www.museums.norfolk.gov.uk

Sunday 3–Saturday 9 August

NAKED IN NORWICH

St Margaret's Church, St Benedict's Street, Norwich

Now in its fifth year, this exhibition will show work in a variety of media from all who attend the group's weekly life workshop.



Stretch
Richard Cleland

Thursdays 7.30–10pm until 10 April
and from 1 May to 24 July 2014

LIFE DRAWING WORKSHOP

Riverside Studio, Wensum Lodge,
King Street, Norwich

This valued workshop has been running for many years. It is open to everyone, beginners and experienced artists alike. Students and sixth formers are especially welcome. It is run on a 'drop-in' basis, with no formal tuition, just come and draw!

After paying a modest sign-up fee, there is a small charge for each session you attend. (Full-time students are exempt from the sign-up fee). Come early to reserve a space. Bring your own drawing materials. Boards, easels, chairs and donkeys are provided.

N20 Group host monthly open meetings at Park Lane Chapel, Norwich on first Tuesday of every month from 7.30pm

Check website for details, free to attend and open to all, please arrive in good time to get a seat (max capacity 75).

For more information see www.norwich20group.co.uk
Free entry to all exhibitions (ticket to Bridewell Museum is required – call 01603 629127 for details)



Rosie Winn



NORWICH SCHOOL

Inspiration for life

Join us at Open Morning – 28th June 2014

For more information visit www.norwich-school.org.uk

Exceptional opportunities
For boys and girls aged 7–18

The Gallery at Norwich University of the Arts (NUA)



The **Gallery at NUA** is a city centre public art space showing a programme of exhibitions by internationally recognised artists, curators and media practitioners. Exhibitions are accompanied by seminars and lectures delivered by specialists and curators, which enrich the University experience for students and those living and working in Norwich, as well as visitors to our city.

For more information about the Gallery and events at NUA
www.nua.ac.uk/thegallery Twitter: [@nuagallery](https://twitter.com/nuagallery)

Exhibitions

Tuesday 11 March–Saturday 5 April

JERWOOD PAINTING FELLOWS

Anthony Faroux

Susan Sluglett

Sophia Starling

Selected by:

Fabian Peake, Marcus Harvey and Mali Morris RA

This is the second edition of the Jerwood Painting Fellowships, which aims to support and promote exceptional emerging painters in the first five years of their professional practice.

The purpose of the Fellowships is to offer structured development opportunities in two distinctive areas: studio practice and professional development. Each Fellow receives a bursary of £10,000 and one year of critical and professional development support from their mentor.

JERWOOD VISUAL ARTS

Jerwood Painting Fellowships are part of Jerwood Visual Arts, a contemporary gallery programme of awards, exhibitions and events. A major initiative of the Jerwood Charitable Foundation.

**JERWOOD
PAINTING
FELLOWSHIPS**

Thursday 24 April–Saturday 24 May

TIM DAVIES

WITH TOM ROWLAND FINE ART

Part of the Norfolk and Norwich Festival 2014

Davies' practice involves working site responsively and this exhibition in Norwich will respond to the city with video works. Having studied for Fine Art at NUA, Davies is already familiar with some aspects of the city but acknowledges that many things have changed since that time and question any assumptions. Davies last exhibited in Norwich in East International.



Wednesday 2 July–Tuesday 8 July

NUA BA DEGREE SHOWS

Visitors will see a wide range of art, design and media work from graduating students from all of our degree courses. Some works are for sale and purchases can be made at the Sale Room located in the Gallery.

Dates TBC

ARTS COUNCIL COLLECTION SHOW

This exhibition will be selected from the Arts Council Collection by our MA Curation students.

Each exhibition is accompanied by a range of events including free public talks.

Please visit www.nua.ac.uk/thegallery for current news and information, or follow us on Twitter @nuagallery

The Gallery at Norwich University of the Arts
St Georges Street, Norwich NR3 1BB Tel: 01603 610561
Open Tuesday–Saturday 12–5pm. Free admission.



MA COURSES

F A S H I O N
F I N E A R T
C U R A T I O N
P H O T O G R A P H Y
T E X T I L E D E S I G N
C O M M U N I C A T I O N D E S I G N
M O V I N G I M A G E A N D S O U N D

95% of MA graduates from NUA
are in employment or further study.
Destinations of Leavers
Survey 2011/12

MA OPEN DAYS

www.nua.ac.uk/opendays



**NORWICH
UNIVERSITY
OF THE ARTS**



OUTPOST is an artist-led space committed to the uncompromising presentation of contemporary art. The gallery has a core program of 11 exhibitions per year, opening on the 1st of each month, February to December. In parallel OUTPOST initiates regular offsite projects, artist talks, film screenings and live events.

OUTPOST is run by a voluntary steering committee and supported by a membership that anyone may join (please visit the gallery or website for details).

OUTPOST Gallery, 10b Wensum Street, Tombland,
Norwich, Norfolk NR3 1HR Tel: 01603 612428

This membership contributes to a vibrant community of artists in Norwich, which OUTPOST seeks to promote alongside the highest quality of national and international artists.

Exhibitions

Sunday 2–Friday 21 February : EMMA HEDDITCH

Sunday 2–Friday 21 March : GABRIELLA BECKHURST

Wednesday 2–Monday 21 April : LILI REYNAUD-DEWAR

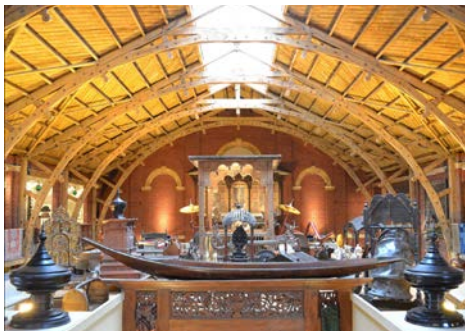
Friday 2–Wednesday 21 May : JESSICA WARBOYS

Monday 2–Saturday 21 June : WILLIAM BLACK



For further programme details
please contact:
questions@norwichoutpost.org

The South Asian Decorative Arts and Crafts Collection Trust



Established in 2010, the Trust's objectives are to conserve a record of, and promote an interest in the arts, crafts and culture of South Asia and neighbouring regions. The collection includes pictures, prints, textiles, metalwork and ethnographic items as well as architectural items, furniture and vernacular objects.

These generally cover a period from the late 18th century to the 21st century and illustrate the everyday arts and crafts of this vibrant region.

The SADACC Trust. Registered charity number (RCN

Exhibition

Highlights from the permanent collection as well as a number of displays are exhibited in a magnificent Victorian skating rink, an attraction in itself.

Opening times: Open daily except Sundays and bank holidays 9.30am–5pm. Admission Free.

Tours and talks can be arranged with prior notice.

The Old Skating Rink Gallery (Country & Eastern)
34–36 Bethel Street, Norwich, Norfolk, NR2 1NR
Tel: 01603 663890
info@sadacc.co.uk



Block printed cotton panel, late 19th C. Patna School. c.1830



Sainsbury Centre for Visual Arts



The Sainsbury Centre for Visual Arts is one of the most prominent university art galleries in Britain, and one of the nation's principal centres for the study and presentation of art. Designed by acclaimed architect Norman Foster, it is one of the most important buildings of the late twentieth century.

The Centre owes its existence to the generosity of Robert and Lisa Sainsbury who donated their extraordinary art collection which includes works dating from prehistory to the present day from across the globe. Alongside this sits two further principle collections: The Anderson Collection of Art Nouveau, donated in 1978 by Sir Colin Anderson; and the University Collection of Abstract and

Constructivist Art, Design and Architecture established by the University in 1968.

The Sainsbury Centre's art collections are displayed across the ground floor of the building whilst on the lower level are the magnificent newly-created exhibition galleries, providing the largest temporary exhibition space in the East of England.

The Sainsbury Centre offers an award-winning learning programme of gallery talks, lectures, and art workshops.

Open Tuesday–Sunday, admission to the building and permanent collection is free.

For more information and bookings visit www.scva.ac.uk

Exhibitions

Friday 14 February–Sunday 14 December
SENSE AND SENSUALITY: Art Nouveau 1890–1914

In this major exploration of the Art Nouveau style, works from the Victor & Gretha Arwas and Anderson Collections, among others, will explore the sensual and psychologically intense nature of the style and the period. The exhibition marks the initiation of a collaboration between the Centre and Gretha Arwas, which will lead to the creation of a Foundation dedicated to the study and presentation of Art Nouveau.



April 2014–March 2015

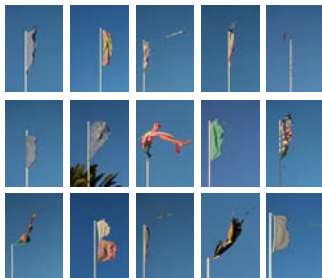
HENRI MATISSE SCULPTURE: THE BACKS

This exhibition celebrates the four monumental relief sculptures by Henri Matisse, known collectively as The Backs, on loan from Tate. The Backs were Matisse's largest sculptures and, over a period of twenty years, he progressively refined the original pose, based on a woman leaning on a fence looking away from the viewer.

Saturday 29 March–Sunday 27 July

MONUMENT: AFTERMATH OF WAR AND CONFLICT

Monument is dedicated to the commemorations on both sides of the Channel marking the 100th anniversary of the First World War as well as the 70th anniversary of the Normandy landings. The exhibition brings together a group of French and British artists, all of whom create works based on the concept of monument.



Boris Chouvellon
Sans titre - 2007-2011, (drapeaux)
Series of 15
photographs
mounted on dibond
and framed
120 x 80 cm each



Andrew Burton, *Things fall apart*
Fired clay, adhesive
2.23m high x 3m x 2m, 300kg



John Virtue,
No. 8, 2011-2013, acrylic on canvas
1.8m h x
5.5m w

Saturday 26 April–Sunday 24 August

JOHN VIRTUE: THE SEA

Renowned painter John Virtue moved to the North Norfolk coast in 2009 and, since that time, has been creating a spectacular new body of work. These canvases are vast in scale and powerful in the drama of their presence, the black and white paint freely applied to the raw canvas surface with brushes, hands and rags.

Time and Place has been selected within the framework of the Interreg IVA France (Channel) – England cross-border European cooperation programme, part-financed by the ERDF.

Le projet TAP a été sélectionné dans le cadre du programme européen de coopération transfrontalière INTERREG IVA France (Manche) – Angleterre, cofinancé par le FEDER.

TIME
AND
PLACE



Permanent collection

THE ROBERT & LISA SAINSBURY COLLECTION

The Living Area

The Robert and Lisa Sainsbury Collection features work spanning 5,000 years of human creativity. Permanently displayed in the Living Area Gallery, the collection includes major holdings of art from Oceania, Africa, the Americas, Asia, the ancient Mediterranean cultures of Egypt, Greece and Rome, Medieval Europe, and includes a significant number of works acknowledged as seminal examples of European modern art, such as Pablo Picasso, Edgar Degas, Francis Bacon, Jacob Epstein, Henry Moore, Alberto Giacometti and Amedeo Modigliani. In 1978 the presentation of ancient world art alongside modern masters was greeted as a revelation, today it continues to provide juxtapositions across time and culture that can inspire and surprise.

The new East-End gallery provides the opportunity for greater freedom in examining the nature of the collections and their particular historical context. There will be a regular programme of changing thematic displays with greater interpretation as well as featuring the collection of modern ceramics including masterpieces from Lucie Rie and Hans Coper. In addition, a flexible project space alongside will show contemporary or historical displays that relate and inform the Sainsbury Collection.

Opening times:
Tuesday–Friday, 10am–6pm. Saturday–Sunday, 10am–5pm. Closed on Mondays and bank holidays.

Admission to the Sainsbury Centre and permanent collections is free.

Bucket man,
John Davies (b. 1946),
England, 1974, mixed media.
h. 210.0 cm;
base 152.4 x 137.2 cm.
Acquired from the artist in 1974.



Little Dancer Aged 14
1880–1881
Edgar Degas (1834–1917)
France
Bronze, fabric
UEA 2

Did you know that:

- The Sainsbury Centre for Visual Arts was architect Sir Norman Foster's first public building
- The Robert and Lisa Sainsbury Collection is one of the few intact modernist collections of the 20th century and is of national and international importance
- The permanent collection is displayed in the Living Area gallery at SCVA, which is a reflection on how the Sainsburys surrounded themselves with art in their own home.

Tel: 01603 593199 **email:** scva@uea.ac.uk
Facebook: /sainsburycentre **Twitter:** @sainsburycentre

SOME SAY IT'S A
WORK OF ART



TO US IT'S A CRAFT

BEER BREWED IN
SMALL BATCHES...
IN NORWICH



WWW.REDWELLBREWING.COM
TWITTER @REDWELLBEER FOLLOW US...



Summer at Salthouse



St Nicholas Church, Salthouse, hosts four exhibitions each year by invited professional artists. The beautiful white interior of the church lends itself ideally to contemporary art, previous exhibitions have featured work by John Kiki, Kathleen MacFarlane, Bruer Tidman, Ian Starsmore.

Exhibition opening times vary, see individual details, free entry to all shows.

St Nicholas Church, Cross Street,
Salthouse, Norfolk, NR25 7XQ
Email: sarah.cannell1@gmail.com

Exhibitions

Friday 23 May–
Sunday 8 June

THE NECESSARY ANGEL

Chloe Mandy

Chloe paints figurative narratives which feature the landscape as a central character. Her new work posits the idea that things created in the imagination belong in the realm of absolute fact.



Chloe Mandy

Open 10–5pm daily, Private view 23 May 6–8pm.
Email: chloe.mandy@btinternet.com

Saturday 14–Sunday 29 June

TIME MEMORY LIGHT:

A retrospective exhibition of work by Elizabeth Peer



Elizabeth has been working and exhibiting for more over 20 years, this is an opportunity to experience an overview of her concerns and interests.
Open 10.30–4.30pm daily.

Elizabeth Peer 'Letter Home'



Sarah Cannell 'Back Road to Reedham'

Saturday 5–Sunday 20 July
MARSH LIGHT : NEW LANDSCAPE PAINTINGS
 Sarah Cannell

Energetic landscapes of Norfolk marsh and field created using acrylic and ink on paper in vibrant colours will fill the church interior.

Open 11–4.30pm daily.
 email: sarah_cannell@onetel.com

Saturday 26 July–Sunday 10 August
NOT YET DEAD NEARLY
 Ruth Calland, Jessica Perry & Jonathan Waller

Free opening event: Sunday 27 July 2–5.30pm.
 3pm Talk: Shellshock & Psychiatry.
 4pm Poetry Reading

Contemplations on the centenary of the start of World War One. Sculpture, paintings and drawing.

Open 10–5.30 daily except 4–8pm on Saturday 2 August
 Saturday 26 July 11am–3.30pm War Poetry Workshop

email: ruthcalland@hotmail.co.uk



Jonathan Waller

Stew Gallery & Artists' Studios



Stew is an artist led non-profit making project based in the heart of the creative sector in Norwich. The main ethos is to provide access to the arts by providing affordable access to our gallery, studios and screen printing facilities.

STEW GALLERY The Stew Gallery is an open submission space for artists whilst curating a number of Stew shows each year with work by both emerging and established creatives from both national and international backgrounds. It is publicly accessible and aims to provide a platform for creative practitioners to show and promote their work. All exhibitions are free entry.

STEW PRINT ROOMS The Screen Print Rooms at Stew have been set up to complement the Stew Gallery and Artists' Studios and to provide the general public with affordable accessible screen printmaking facilities in textiles and paper. It is run by professional artists who are passionate about printmaking and have a wealth of professional experience.

STEW STUDIOS

The studios at Stew provide affordable spaces for artists. Being mainly open plan with natural light provided by sky lights and large windows the space is friendly, open and creative. Rents are low in keeping with our philosophy of accessibility.



Rents are low in keeping with our philosophy of accessibility.

EXHIBITIONS@STEW

We have an ongoing series of exhibitions held in the gallery throughout the year. Keep an eye out for posters/flyers and of course social media. All Stew exhibition are free entrance.

For enquiries please mail: marcus@stew.org.uk
Twitter [@stewgallery](https://twitter.com/stewgallery) Facebook [/stewgallery](https://www.facebook.com/stewgallery)
www.stew.org.uk



Theatre Royal Norwich hosts four exhibitions each year by prominent, professional artists from the region. They are kindly sponsored by Targetfollow Estates Ltd. and curated by Sarah Cannell. The work is displayed in the Adnams Circle Bar on the first floor at the Theatre Royal. All work is framed and for sale.

All exhibitions open from 9.30am, Monday to Saturday, until the theatre closes (6pm on non-performance days).

Theatre Royal, Theatre Street, Norwich NR2 1RL
Email: sarah.cannell1@gmail.com

Exhibitions

Until Thursday 24 April
**NORWICH 20 GROUP –
70th ANNIVERSARY EXHIBITION**

22 artists are featured in this selected and curated exhibition, a fantastic taster of this diverse group, the exhibition kicks off their 70th anniversary year.

25 April–24 July
CORNELIA FITZROY

The return of one of our favourite landscape painters, Cornelia uses acrylic on paper to produce fresh, lively landscapes of Norfolk and places from her travels.



Cornelia Fitzroy

25 July–24 October
FIONA ROBERTS

Fiona has been creating her own paints and using traditional oil on canvas to create evocative Norfolk landscapes, she is an alumni of Norwich Art School.

24 November 2014–24 January 2015
RICHARD MATTHEWS

'*The Twelve Dames of Christmas*' shows the work of Richard Matthews, set designer at the Theatre Royal, and featuring portraits of pantomime dames.

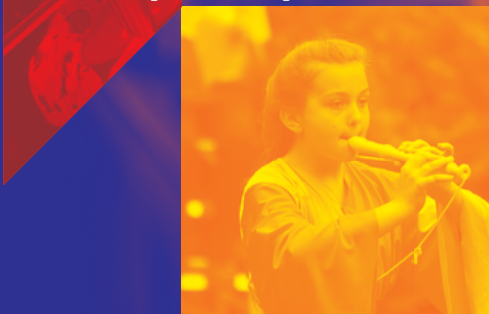


Young Norfolk Arts Festival 2014

A celebration of creativity by and for young people



Friday 27 June –
Sunday 6 July 2014



For more information or to find out how you can get involved visit www.ynaf.org.uk. Follow us on Twitter @YN_AF

A quick guide to art in Norwich



View of Norwich from City Hall towards Norwich Castle

Norwich is a medieval city which, in its hey-day, rivalled London in terms of size and was for many years England's second city, being only 100 miles from the court of London. It was a wealthy city with its fame built on textile trade, weaving and particularly wool. Nearly half of the population was French, Dutch or Flemish and engaged in the weaving trade – hence the name of the football club, the Canaries, called after the birds which the weavers kept for company.

In the Industrial Revolution, Norwich was off the beaten track for commerce and transport and so attracted artists, philosophers and radical thinkers, and was home to the famous Norwich School of Painters. Many religious non-conformists also settled here and the place became a hotbed for artists and writers, as it is today. It is also now a UNESCO City of Literature.

Amongst its many cultural assets Norwich can claim:

Norwich University of the Arts, one of the best universities for courses in animation and film, fine art and illustration, architecture, games design, graphic design, media and much more, including the Gallery in St George's Street.

Norwich Castle and the Sainsbury Centre for Visual Arts – world-class venues, attracting national-level touring shows, with permanent collections of World Art as well as work by Picasso, Henry Moore, Francis Bacon, Modigliani, Degas and local masters – Munnings and the Norwich School of Painters including contemporary work from artists such as Colin Self.

Norfolk and Norwich Festival, an international multi-arts annual festival with 17 days of concerts, outdoor arts and theatre, both mainstream and left-field, as well as an increasingly innovative and site-specific visual arts programme.

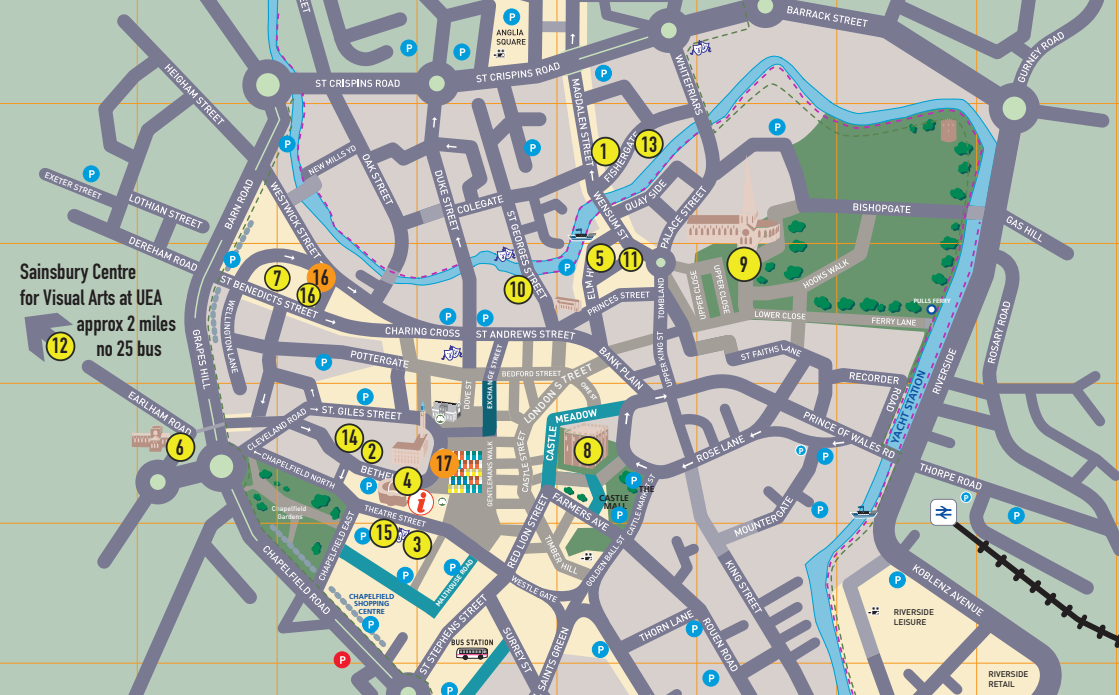
Norwich Arts Centre is a multi-arts venue with a visual art programme which includes live art, photography and digital art. Norwich Cathedral is developing its events programme and has a regular cycle of exhibitions in the Hostry.

There are a number of artist-led galleries and studios, notably OUTPOST and Stew – and some well-established and very active, artists' groups such as Norfolk Contemporary Arts Society, Anteros Arts, Norwich 20 Group and the Lonely Arts Club. Sculpture for Norwich is a charity which promotes and fundraises for more public sculpture in the city, and increased awareness.

Venues such as the Forum, Assembly House and St Margaret's Church all support artists and host exhibitions along with several commercial galleries such as Art 18|21 and Mandell's. As well as Art in Norwich partners, there are over 800 practising visual artists and groups in Norfolk and a thriving underground arts scene in addition to the main institutions. www.artinnorwich.org.uk

Sainsbury Centre
for Visual Arts at UEA
approx 2 miles
no 25 bus

12



GALLERIES AND ART VENUES IN THE CITY OF NORWICH

Art in Norwich members and venue details

- 1 Anteros Arts Foundation, 7–15 Fye Bridge Street, NR3 1LJ
Tel: 01603 766129 www.anteros.co.uk
- 2 Art 18|21, Tel: 07879 w673419 www.art1821.com
- 3 Assembly House and Noverre Gallery, Theatre Street, NR2 1RQ
Tel: 01603 626402 www.assemblyhousenorwich.co.uk
- 4 The Forum, Millennium Plain, NR2 1TF
Tel: 01603 727950 www.theforumnorwich.co.uk
- 5 Mandell's Gallery, Elm Hill, NR3 1HN
Tel: 01603 626892 www.mandellsgallery.co.uk
- 6 The Narthex, Cathedral of St John the Baptist, Earlham Road, Norwich
Tel 01603 724380 www.sbjcathedral.org.uk
- 7 Norwich Arts Centre, St Benedicts Street, NR2 4PG
Tel: 01603 660352 www.norwichartscentre.co.uk
- 8 Norwich Castle Museum & Art Gallery, Norwich Castle, Castle Hill, NR1 3JU
Tel: 01603 493625 (Mon–Fri) www.museums.norfolk.gov.uk
- 9 Norwich Cathedral, The Close, Norwich NR1 4EH
Tel: 01603 218300 www.cathedral.org.uk
- 10 The Gallery at Norwich University of the Arts, St George's Street, NR3 1BB
Tel: 01603 886385 www.nua.ac.uk
- 11 OUTPOST Gallery, 10b Wensum Street, NR3 1HR
Tel: 01603 612428 www.norwichoutpost.org
- 12 Sainsbury Centre for Visual Arts, University of East Anglia, NR4 7TJ
Tel: 01603 593199 www.scva.ac.uk

- 13 Stew Gallery & Artists' Studios and Print to the People, 40 Fishergate NR3 1SE www.printtothepeople.com
- 14 South Asian Decorative Arts & Crafts Collection Trust, The Old Skating Rink Gallery, 34–36 Bethel Street, NR2 1NR
Tel 01603 663890 www.sadacc.co.uk
- 15 Targetfollow at Theatre Royal, Theatre Street, NR2 1RL
e: sarah.cannell1@gmail.com

Other venues used by members for exhibitions and events

- 16 St Margaret's Church, St Benedict's Street, Norwich NR2 4AQ
*Not open all the time
- 17 The Undercroft, beneath Memorial Gardens, Norwich Market
*Not open all the time email clare.hubery@norwich.gov.uk

Member organisations without venues

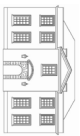
Lonely Arts Club www.thelonelyartsclub.org.uk
Norfolk & Norwich Festival www.nnfestival.org.uk
Norfolk Contemporary Arts Society
email: j63bevington@btinternet.com www.n-cas.org.uk
Norfolk & Norwich Art Circle Adrienne May 01692 404153 and Richard Motley 01508 495320 www.nnartcircle.com
Norwich Fringe Festival Tel: 07946 261651
www.norwichfringefestival.co.uk
Norwich 20 Group email: n20gnoticeboard@gmail.com
www.norwich20group.co.uk
Culture Shift email: info@theshiftnorwich.org.uk
Tel 07946 261651 www.theshiftnorwich.org.uk

Art in Norwich

‘What’s on?’ a round-up of visual art, sculpture and architectural events in Norwich



Art in Norwich partners are:



Art in Norwich is produced by The Shift Norwich
www.artinnorwich.org.uk

