



## ART IN NORWICH

Small Stories : At Home in a Dolls' House : Norwich Castle : 4 March to 25 June 2017

Paul Nash : Sainsbury Centre for Visual Arts : 8 April 2017 to 20 August 2017

The Makers : Felbrigg Hall, National Trust with NCAS : 22 April to 29 October 2017

Dozens more exhibitions at galleries & studios in Norwich and Norfolk

FREE  
GUIDE

# ART IN NORWICH

a round-up of visual art exhibitions  
and events in Norwich and beyond

March to August 2017

# Exhibitions at a glance : March to August 2017

Please use this calendar as a quick month-by-month reference. The dates shown are start dates. The darker bands indicate a show spanning more than one month.

## MARCH 2017

		page
1	Norwich Cathedral Hostry : Stations of the Cross	26
2	Norwich Cathedral Hostry : Threads through Revelation	26
4	Norwich Castle : Small Stories : At Home in a Dolls' House	25
11	GroundWork Gallery King's Lynn: Herman de Vries	60
14	Fairhurst Gallery : The Day Cary Came to Norwich	9
21	Anteros Arts : NUA Fine Art & Corrin Tulk, Michelle Daniels & Ann Lamb	6
24	OUTPOST : Rebecca Ackroyd : House Fire	37
25	Mandell's Gallery : Malca Schotten	17

## APRIL 2017

		page
1-18	Gallery Norfolk in Norwich : Flowers in Art	14
1	St Etheldreda's : Saturday opening : Paul Meade	44
4	Anteros Arts : David Chedghey and John Rance	6
5-9	Forum : Spring Art Show	10
8-22	Gallery Norfolk in Cromer : Jenni Cator	14
8	Sainsbury Centre for Visual Arts : Paul Nash	41
17/18	Forum : Ian Drummond Norwich Showcase	11
18	Anteros Arts : Jodie Bougaud and John Bardell, Yusuf Keten	6
20-22	Forum : Mary Richardson, Lyn Ravenhill, Joy Cole	11
21	Norwich School Crypt : Rachel Cocker/Emily Leason	31
20	Norwich Cathedral Hostry : The Cross	26
22	The Makers at Felbrigg Hall, Felbrigg	20 & 58
22	Mandell's Gallery : Spring Exhibition	17
22	Artist Demonstration : Sue Williams	21
24	Theatre Royal : John Midgley	47
25	Fairhurst Gallery : Masks, Mysteries and Other Wordly Pleasures	9
25-30	Forum : Norfolk & Norwich Open Studios Taster	11
27	ncas : at NUA Duke Street : John Berger talk by Tom Overton	18
27	Time & Tide : Creative Collisions	67
29/30	St Etheldreda's : Medieval Churches Weekend Flintspiration	44



Cover: Sarah Cannell 'Towards Clinks Farm'

From the editor:

## Welcome to Art in Norwich Spring and Summer 2017

We have some great highlights for this summer season in Norwich as well as out into the beautiful county of Norfolk.

Norwich Castle starts the spring off with an exhibition of Dolls' Houses from the V&A Museum of Childhood including a display of 'dream rooms' made by artists and designers from an open submission.

East Gallery<sup>NUA</sup> has teamed up with the Norfolk & Norwich Festival with an extraordinary exhibition by Hans-Peter Feldmann, whilst the Sainsbury Centre is showing Rana Begum as well as an exhibition of work by Paul Nash which will be a real crowd-puller.

Norfolk & Norwich Open Studios offers an opportunity to see artists in their natural habitat and the Norwich Print Fair is a chance to buy original work as well as learning about print-making.

## MAY 2017

## page

2	Anteros Arts : We Came Here to Conquer & Liz Reed	6
2	Harleston & Waveney Art Trail Spring Show, Brockdish	61
5-28	OUTPOST : Andrew Gillespie	37
6-24	Gallery Norfolk in Norwich : Andy Lovell	15
6	East Gallery <sup>NUA</sup> : Hans-Peter Feldmann	35
6-21	Summer at Salthouse : Alfie Carpenter	66
12	Greenhouse Gallery : Earth	16
8	Sainsbury Centre for Visual Arts : Rana Begum	41
16	Anteros Arts : Artful Stitchers	6
18	Mandell's Gallery : Garry Raymond-Pereira	17
20	Artist Demonstration : Jackie Devereux	21
23	ncas : Cathy Lomax talk : Forum	19
26/27	Forum : Turn the Page Artists' Book Fair	12
27	Anteros Arts : Anthony George & Open Studios	6
27/28/29	Sarah Cannell Open Studio Raveningham	64
27	NN Open Studios taster Exhibition at Raveningham	64

## JUNE 2017

## page

3/4/10/11	St Etheldreda's : NN Open Studios	44
3/4/10/11	Sarah Cannell Open Studio Raveningham	64
6	ncas : Kettles Yard talk by Andrew Nairne	19
6-15	Norwich Cathedral Hostry : NUA Bishop's Prize	27
10	Artist Demonstration : Hashim Akib	21
11	Greenhouse: Peter Melchett : Poetry reading and Auction	16
11	ncas : Abstracted : Mannington Hall	20
11	St Etheldreda's : Free Drawing Day	44
13	Anteros Arts : John Matthews & Nick White	6
13-24	Norwich 20 Group : At the Undercroft	23
16	Fairhurst Gallery : Trees and Other Objects	9
17	Mandell's Gallery : Bill English	17
18-23	Norwich 20 Group at the Forum	23
19	Theatre Royal : Sally Hirst	47
20-24	Forum : Norwich School Art Exhibition	12 & 31
20	Norfolk & Norwich Art Circle : Norwich Cathedral Hostry	21 & 27
24/25, then 1/2 8/9 July	Harleston and Waveney Art Trail Open Studios	61
27	Anteros Arts : Rod Thompson	6

John Berger  
1926-2017



The recent death of influential artist, critic, poet and writer John Berger shook the art world and there are a number of events featuring him and his work: an exhibition at Mandell's Gallery, a talk hosted by Norfolk Contemporary Art Society at The Forum and a City of Literature event as part of the Norfolk & Norwich Festival in May.

The Urban Art Fair gets 'art to buy' out on the street in July and the Forum and Undercroft are as busy as usual with many shows by local artists, see pages 10-13, 48.

There are great opportunities to take part in art activities too – see courses by Artpocket, Royal Drawing School and Anteros Arts.

Out of Town there are new exhibitions at GroundWork in Kings Lynn, Grapevine and Pocock's the Artmonger in Burnham Market, the Norfolk Gallery in Norwich and Cromer. Cley 17 runs through July.

There is so much more going on than we can list here so keep an eye on the website [www.artinnorwich.org.uk](http://www.artinnorwich.org.uk)

*In the At a Glance to the left, the darker blue strips indicate longer-running exhibitions that last beyond the month in which they start.*

## JULY 2017

	page
1 Greenhouse Gallery : Save Our Soils	16
1 St Etheldreda's : Open Saturday : Stephen Palmer	44
1/2 8/9 Harleston and Waveney Art Trail Open Studios	61
1-24 Summer at Salthouse : NOVA	66
5-8 Forum : Art Norfolk 17	12
5-14 Norwich Cathedral Hostry : Royal Drawing School	26
6 Cley 17 Connectivity : Cley-next-the-Sea	57
7-10 Forum : Freehand at the Forum : Toni Hayden	13
8-22 Gallery Norfolk in Norwich : Ruth Bunnewell	15
8 Mandell's Gallery : Ways of Drawing – Celebration of John Berger	17
9 Urban Art Fair : St Peter's Street – one day only	51
14 GroundWork Kings Lynn : Ivimey, Newman, Best	60
17-22 Norwich 20 Group : Naked in Norwich	23
14 Anteros Arts : Black Tie Silent Auction Fund Raiser	6
18-23 Forum : Norwich 20 Group	13 and 23
18-29 Norwich Cathedral Hostry : Photographic Society	27
22 Pocock's the Artmonger: Burnham Market : Tracey Ross	65
29 Norwich Castle : Nelson and Norfolk	25

## AUGUST 2017

	page
3-13 Summer at Salthouse : Anna-Lise Horsley and Siri Taylor	66
4 Waveney & Blyth Arts : Inspired by Becker	63
5 St Etheldreda's : Open Saturday : Jude Chaney	44
5-20 Breckland Artists : The Undercroft	50
8-12 Forum : Drawn By The Light : John Patchett	13
18 Waveney Valley Sculpture Trail at Raveningham	61 & 62
30 East Gallery <sup>NUA</sup> : In Quotes	35

## SEPTEMBER 2017

	page
1-24 Norwich Cathedral Hostry : Beasts and More Beasts	27
1-24 Waveney & Blyth Arts : A Murder of Crows	63
4-16 Norwich Print Fair : St Margaret's Church	28
5-30 The Art of Revolution : The Undercroft	49
Dandifest Apr/May 2017 8 Maps of Norwich and Norfolk venues	53 & 56
NUA Open Days 36 Shoe Factory Social Club, St Mary's Works	
North of the City 52 & Lion House, St George's Works	55



**Art in Norwich** is produced by Culture Shift in association with Norwich Visual Art Forum as a companion to **Music in Norwich**, a roundup of concerts and music events in Norwich which you can find on [www.musicinnorwich.org.uk](http://www.musicinnorwich.org.uk) or printed copies around the city. The next edition is due out in April and covers concerts until September.

Information about Culture Shift can be found at [www.theshiftnorwich.org.uk](http://www.theshiftnorwich.org.uk) where you can also find an overview of Norwich culture and other useful information.

You can sign up for email updates via Culture Shift on the website.

*Errors and omissions excepted, info is checked as well as possible but cannot be guaranteed. Please confirm before travelling*

*If you require copies to display please email [info@theshiftnorwich.org.uk](mailto:info@theshiftnorwich.org.uk) 07946 261651*

## About Art in Norwich

This programme is the result of a collaboration of the Norwich Visual Art Forum, a number of organisations who promote visual art, public art, craft and architecture in and around Norwich. The aim is to gather visual art listings in one place so that they are easy to find and to offer an overview of art activity and infrastructure across the city and throughout the year. The Norwich Visual Art Forum is a self-supporting partnership of visual art groups and organisations active in Norwich and the surrounding area.

We hope you will keep this booklet safe as it covers six months' programming. Because of space limitations and lots going on, exhibition and event details are brief but you can find out more from individual organisations and venues from their own websites. See pages 68/69 for contact and venue details.

Please also visit our website at [www.artinnorwich.org.uk](http://www.artinnorwich.org.uk) where you can download a pdf of this programme.

*Important: All information is subject to change - please check with individual organisations before travelling to an event.*

*Image : Paul Nash, The Rye Marshes (detail), oil on canvas, 1932*

*Ferens Art Gallery: Hull Museums.*



**SAINSBURY  
CENTRE**  
for Visual Arts

[www.scva.ac.uk](http://www.scva.ac.uk)

**Paul Nash**

8 April  
to 20 August 2017

## Anteros Arts Foundation



The Anteros Arts Foundation is an Arts Centre located in Fye Bridge Street, Norwich NR3 1LJ and is a registered charity for education no 1135692.

### Exhibitions, courses and workshops

Anteros Arts is currently running a Diploma course which started in September 2017, incorporating tuition in the fundamental fine art skills of drawing, painting, sculpture, printmaking and art history and theory.

We also run many leisure courses and workshops with new ones popping up all the time so to find out what is current please visit [www.anterosfoundation.com](http://www.anterosfoundation.com)

At Anteros we also offer a vibrant programme of free entry exhibitions. We have two gallery spaces, the Main Gallery with original Tudor features including a carved ceiling, fireplace and moulded timber window and The Front Room which is a more contemporary space.

Exhibitions change over every two weeks and highlights this spring include:

- March 21 *NUA Year 2nd year Fine Art & Corrin Tulk, Michelle Daniels and Ann Lamb*
- April 4 *David Chedgely and John Rance*
- April 18 *Jodie Bougaud and John Bardell, Yusuf Keten*
- May 2 *We Came Here to Conquer & Liz Reed*
- May 16 *Artful Stitchers*
- May 27 *Anthony George & Open Studios*
- June 13 *John Matthews & Nick White*
- June 27 *Rod Thompson*
- July 14 *Black Tie Silent Auction Fund Raiser*

# Artpocket Creative Art Courses



Artpocket is a collaboration of artists who aim to increase the creative output of others and tap into hidden talent. We develop and deliver educational programmes that provide opportunities for both adults and children to access skills, tuition and support with professional development at any stage of their creative career. All our tutors hold teaching qualifications and have a wealth of experience in delivering creative education. In our airy space at Lion House we are well equipped with a main studio and secondary print and textiles workshop, providing a professional and creative space to unleash your potential.

**2nd Floor, Lion House, Muspole Street, Norwich NR3 1DJ**

**Email:** [info@artpocket.co.uk](mailto:info@artpocket.co.uk)

**Call:** Becky 07903 818017, Hannelore 07789 985008

We run the following courses:

## FULLTIME OR PART-TIME

**Foundation Diploma in Art, Design & Media, accredited by ABC Awards**

– to find out more book onto our next open evening 26 April, 5pm–7.30pm.

**Art Direction** – Tuesday daytime, 12 weeks £360

## EVENING COURSES

Get started on your creative journey with one of our great evening courses. There is something for everyone including: Drawing, Print-making, Textiles, Craft, Book Arts & Contextual Studies.

## YOUNG PEOPLE'S COURSES:

**miniPOCKETS:** After school club for **7–11 year olds**. Thursday afternoons, 6 week course £45



**smART Pockets:** Creative courses for **12–16 year olds**  
Creative Textiles, Old School Games Design, Illustrated Bookworks, Radical Fashion  
Tuesday afternoons, 6 week course £45

We can also create bespoke workshops for schools, colleges and organisations.

See the latest programme on our website





# DANDIFEST

ARTS FESTIVAL APRIL - MAY 2017

Full programme available at [norwichdandies.co.uk](http://norwichdandies.co.uk)

Find us on [facebook.com/TheNorwichDandies](https://www.facebook.com/TheNorwichDandies)





## Fairhurst Gallery



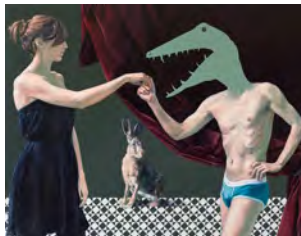
*Tucked away in the Norwich Lanes, the Fairhurst is a unique and charming gallery space.*

Established in 1949, the Fairhurst Gallery and Picture Framers is a hidden gem in the historic centre of Norwich in Bedford Street. The framing workshop offers artistic services of the highest quality and the Gallery champions contemporary fine art.

There are regular exhibitions platforming the best of the region's talent.

## Exhibitions

Tuesday 14 March to Saturday 8 April 2017  
**THE DAY CARY CAME TO NORWICH**

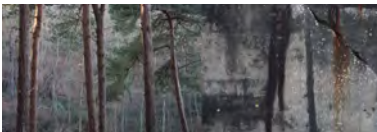


*Scene with Hare*



*Nina Mae Fowler,  
The Day Cary  
Came to Norwich*

Tuesday 25 April to Saturday 10 June 2017  
**MASK, MYSTERIES AND OTHER WORLDLY PLEASURES**



*Scapeland XXIII*

Friday 16 June to Saturday 5 August  
**TREES AND OTHER OBJECTS**

Admission free. Open Tuesday to Saturday 9.30am-5.30pm  
Tel: 01603 614214 Email: [fairhurstgallery@gmail.com](mailto:fairhurstgallery@gmail.com)  
[www.fairhurstgallery.co.uk](http://www.fairhurstgallery.co.uk)

## The Forum



The Forum, right in the heart of Norwich city centre, is home to a year-round programme of FREE exhibitions, events and activities. It's also a great place to grab a coffee, a pizza and to explore one of the busiest libraries in the UK.

The Forum's website has information on day-to-day events going on in the huge, glass Atrium, the Gallery and the Auditorium. There are also courses, classes and talks in the library and conversation gatherings in Café Bar Marzano.

You can follow The Forum on Twitter – [@TheForumNorwich](#) – and Facebook – [The Forum, Norwich](#) – for updates, images and videos.

Our programme of events is already packed with an eclectic mix of art, literature, dance, music, sport, heritage, science and technology. The Forum is open seven days a week from 7am to midnight, with plentiful parking underneath. We have regular shows by local artists and craftspeople and this is only a selection so please visit the website for updated information: [www.theforumnorwich.co.uk](http://www.theforumnorwich.co.uk)



*Brian Korteling, Spring Art Show*

**Wednesday 5 to Saturday 9 April 2017**

### **SPRING ART SHOW**

The Spring Art Show is an open entry art exhibition showing a wide variety of work by local artists.

**Exhibition open daily 10am–5pm**



*Bringing in the Catch by Ian Drummond*

**Monday 17 & Tuesday 18 April 2017, 9am–5pm**

### **IAN DRUMMOND: NORWICH SHOWCASE 2017**

This is Ian's fourth exhibition at The Forum and brings together a selection of local artists working in a variety of different mediums. The exhibitors range from professional artists to ambitious amateurs showing their work for the first time in a public space.

**Thursday 20 to Saturday 22 April 2017, 10am–5pm**

### **MARY RICHARDSON, LYN RAVENHILL AND JOY COLE**

An eclectic exhibition of paintings, sculpture and mixed media by artists Mary Richardson, Lyn Ravenhill and Joy Cole, inspired by Norfolk landscapes, seascapes and nature.



*Joy Cole*



*Hare by Mary Richardson*



**Tuesday 25 to Sunday 30 April 2017**

**9.30am–6.30pm (closing at 4pm on Sunday 30 April)**

### **NORFOLK & NORWICH OPEN STUDIOS TASTER EXHIBITION 2017**

This annual exhibition gives visitors the chance to get a taste of what's in store during this year's Norfolk & Norwich Open Studios. Work is exhibited by artists from every corner of Norfolk, offering a preview to studios that will be open to the public 27 May to 11 June.

From jewellery to printmaking, ceramics to textiles, photography to woodturning and much more, the exhibition celebrates the vibrancy and diversity of visual arts created across Norfolk.

*In association with*



Friday 26 &  
Saturday 27 May 2017

## TURN THE PAGE ARTISTS BOOK FAIR

Turn the Page, an established international book art and design fair, returns for another year to The Forum in May.

Alongside 60 artists and printmakers and a fascinating array of all things associated with artists books and bookbinding, international artist Anna Yevtukh, creates the centre piece, a leather bound 'Street of Books' to explore ideas of belonging, habitation and environment.

German artist, Barbara Beisinghoff, is also exhibiting at the fair along with author Frances Bingham, Turn the Page's community art project the Norfolk Longbook, sculptural, altered and fine press artists' books, print work from the Artists' Book Club, the Society of Bookbinders and volunteers from John Jarrold Print Museum.

Fair open daily 9.30am–5.30pm



*Anna Yevtukh: Time For a Change*

Tuesday 20 to Saturday 24 June 2017  
**NORWICH SCHOOL ART EXHIBITION**

A-Level pupils at the Norwich School exhibit the best of their work from the past year in this five-day exhibition including works in the medias of painting, sculpture, graphics, photography, film, printmaking textiles, architecture and 3D Design.

Exhibition open daily 9am–5pm

Wednesday 5 to  
Saturday 8 July 2017

## ART NORFOLK 17: SUMMER SHOW

Local artists come together for this year's exhibition offering a riot of colour and variety in a vibrant summer show of paintings, drawings, collages, glasswork and sculpture.

Exhibition open daily  
10am–5pm



*Richard Newby, Art Norfolk 17*

Friday 7 to Monday 10 July 2017

## FREEHAND AT THE FORUM

Local artist, Toni Hayden, showcases original drawings and paintings of figures, flowers, cats, portraits, cityscapes and calligraphy. Toni uses a variety of materials including watercolour, gouache, ink, graphite and Conte.



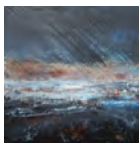
Toni Hayden

Exhibition open daily  
10am–5pm

Tuesday 18 to Sunday 23 July 2017

## NORWICH 20 GROUP 2017

The Norwich 20 Group stages their annual exhibition showcasing the finest contemporary art being made in Norwich and Norfolk.



Tracey Ross,  
*Drenched Horizon*

Exhibition open daily 10am–6pm

Entrance to The Forum is free – please see our website for further info on all exhibitions, activities and events.

Tuesday 8 to Saturday 12 August 2017

## DRAWN BY THE LIGHT – EXHIBITION OF RECENT PAINTINGS BY JOHN PATCHETT

*Drawn by the Light* is an exhibition of recent paintings which bears all the hallmarks of East Anglian artist, John Patchett. Light, in all its guises, features strongly throughout the exhibition.

Peaceful Broadland retreats, warm summer days on the coast, the bustle of Norwich market and its adjacent streets, secret gardens and romantic harbours in the evening light are all included in this latest major exhibition.

Exhibition open daily 9.30am–5.30pm



John Patchett

## The Gallery Norfolk : Norwich & Cromer



Norwich



Cromer

The Gallery Norfolk which has two homes – Norwich and Cromer – focuses on high quality contemporary art and a carefully chosen selection of handmade craft and jewellery, much with an East Anglian connection.

We love unusual and quirky things at The Gallery Norfolk and have a wide range of art and craft on show, including original oils, limited edition prints, photography, ceramics, glass and sculpture.

The Gallery Norfolk is proud to be working with Own Art – the Arts Council initiative – offering interest free loans to spread to cost of buying art over 10 months.

own art

## Exhibitions



*Hellebores* Lara Bowen



*Mary Randle*

Saturday 1 to Tuesday 18 April 2017  
The Gallery Norfolk, St. Giles' Street, Norwich

### FLOWERS IN ART

We are welcoming in the springtime by showcasing our artists who specialise in paintings and prints of flowers, including work by Lara Bowen, Elizabeth Merriman, Mary Randle and Shyama Ruffell.

Saturday 8 to Saturday 22 April  
3 Church Street, Cromer

### JENNI CATOR : ALL CREATURES GREAT AND SMALL

With a 1st Class Honours in portrait painting, Jenni Cator has turned her eye to painting quirky oils and her own 'non-traditional' linocuts of pets in all shapes and sizes.



*Pet Portrait* Jenni Cator



*Andy Lovell, Rollers at Cromer*

Saturday 6 to Wednesday 24 May 2017  
The Gallery Norfolk, St. Giles' Street, Norwich

### ANDY LOVELL

A solo show for one of the UK's finest printmakers – created from hundreds of drawings made en plein air, all over the country (Norfolk, Gloucestershire, Cornwall, London) and boiled down to a selection of stunning monotypes and screenprints 'taken from land, the sea and all in between.' All limited edition pieces, each one unique, prices range from £180 to £1,400 – they are wonderful, affordable and covetable.

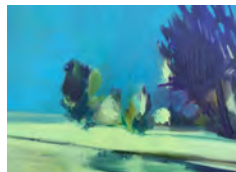
Saturday 8 to Saturday 22 July 2017  
The Gallery Norfolk, St. Giles' Street, Norwich

### RUTH BUNNEWELL

NUA graduate Ruth Bunnewell's atmospheric paintings of Norfolk often consider the contrast between wide open spaces and dark tense groups of trees. Her last sell-out exhibition at the Gallery was based on the North Norfolk coast, this time she will focus on the landscapes found in the South of the county and into Suffolk.



*Salhouse building*



*Norfolk Heath*

The Gallery Norfolk is at  
60 St Giles Street, Norwich, NR2 1LW 01603 761900  
3 Church Street, Cromer NR27 9ER 01263 515745

Opening hours 10am – 5pm Monday – Saturday  
[www.thegallerynorfolk.co.uk](http://www.thegallerynorfolk.co.uk)  
email: [polly@thegallerynorfolk.co.uk](mailto:polly@thegallerynorfolk.co.uk)



## Greenhouse Gallery



The Greenhouse Gallery is a contemporary Environmental Art Gallery and includes fine art, cards, prints, paintings, books.

Licensed organic café with courtyard garden

Visit website for details

[www.greenhousetrust.co.uk](http://www.greenhousetrust.co.uk)

42-46 Bethel Street, Norwich NR2 1NR

Open Tuesday-Saturday 10am-4.30pm

## Exhibitions

Friday 12 May to

Sunday 11 June 2017



Artists, writers and scientists supporting the Soil Association's *Living Soil – A Call To Action* Campaign. Work selected for eARTH will be on display in the Gallery as part of the Norfolk and Norwich and Open Studios Festival in 2017.

Sunday 11 June 2017

### POETRY READING AND AUCTION

Join Peter Melchett, the artists and writers in the garden and gallery.

Saturday 1 July to

Saturday 19 August 2017

### SAVE OUR SOILS

Dit Dit Dit

Dah Dah Dah

Dit Dit Dit

See website for opening times and details

[www.greenhousetrust.co.uk](http://www.greenhousetrust.co.uk)



## Mandell's Gallery



Mandell's Gallery is one of Norwich and Norfolk's most respected commercial art galleries. Mandell's Gallery was founded in 1965. Originally specialising in 19th century Norwich School painters, the gallery has expanded greatly and now has a diverse collection of traditional and contemporary art, offering opportunities for many new and local artists as well as more established names. You are welcome to view the collection at the art gallery, situated on the beautiful and historic street of Elm Hill, near Norwich Cathedral.

More info [www.mandellsgallery.co.uk](http://www.mandellsgallery.co.uk) Tel 01603 626892

### Exhibitions

25 March to 15 April 2017

#### **MALCA SCHOTTEN: COASTAL FORMS & LANDSCAPES**

Malca Schotten's practice is predominantly drawing — large-scale and high energy, crafted yet raw and expressive.

22 April to 13 May 2017

#### **MANDELL'S GALLERY SPRING EXHIBITION**

An eclectic mixed Spring exhibition featuring traditional and contemporary fine art.

18 May to 10 June 2017

#### **GARRY RAYMOND-PEREIRA**

Garry is particularly inspired by the crashing waves of the Norfolk coastline or the mountainous areas of the UK

17 June to 1 July 2017

#### **BILL ENGLISH**

A retrospective exhibition of works by Bill English, former principal of the Norwich School of Art & Design (now NUA)

8 July to August 2017

#### **WAYS OF DRAWING: A CELEBRATION OF JOHN BERGER**

An exhibition celebrating the writer and artist John Berger (1926-2017) and his love of drawing. The exhibition will include work by a number of his artist friends and collaborators as well as a comprehensive selection of Berger's own drawings, letters and books and will be accompanied by a programme of gallery talks and events.



## Norfolk Contemporary Art Society



Norfolk Contemporary Art Society, founded in 1956 and celebrating its 60th anniversary last year, is a charitable association that promotes the interests of contemporary art in Norfolk. It has acquired its own collection of paintings and sculpture, which form the basis of holdings in post-war art in the Norwich Castle Museum & Art Gallery.

**ncas** also raises funds for public sculptures and has an on-loan collection of local artworks.

Supporting local art in many ways, **ncas** mounts a lively programme of monthly events, mostly in Norwich, which includes lectures by artists, critics and art historians, gallery visits, auctions, private views and parties. They also curate exhibitions, including the biennial open show in The Forum (see *ncas16* photos above).

## Exhibitions, events and talks

Thursday 27 April 2017, 6.30pm  
Lecture Theatre, NUA, Duke Street, Norwich

### JOHN BERGER

**A talk by Berger's biographer  
Tom Overton, in association with  
Norwich University of the Arts**

John Berger (1926–2017) was an English art critic, novelist, painter and poet. His novel *G* won the 1972 Booker Prize, and his essay on art criticism *Ways of Seeing*, written as an accompaniment to a BBC series, is often used as a university text. Berger lived in France for more than half a century.

Tom Overton is a Postdoctoral Research Fellow on the archives of the Barbican and Guildhall School of Music and Drama. He edited *Portraits: John Berger on Artists* (2015) and *Landscapes: John Berger on Art* (2016), and is writing both Berger's biography and a book on archives and migration.

**Members £2.50, NUA students free, non-members £4**

For more details of events as they become available, as well as membership of **ncas** please visit the website



*John Berger*

Tuesday 23 May 2017, 7.30pm  
The Auditorium, The Forum,  
Norwich

A talk by **CATHY LOMAX**  
Winner of the Contemporary  
British Painting Awards 2016

Lomax's work is rooted in the romance of popular culture, assimilating media fictions and mythologies of fame and juxtaposing them with personal identities, secrets and the everyday, to create a seductive visual narrative.

Photography, often the source of imagery, is reconfigured to create a wish-list of popular and obscure icons – particularly from English history and contemporary culture.

Her work takes the form of groups of paintings, which may be combined with other elements to form fragmented stories that chart a curious contemporary longing for something unobtainable.

**Members £2.50, non-members £4**



*Cathy Lomax, Black Venus*



*Kettles Yard, Cambridge*

Thursday 15 June 2017, 7.30pm  
The Auditorium, The Forum, Norwich

### **KETTLES YARD**

A talk by **Andrew Nairne**, Director of Kettle's Yard, Cambridge

This much anticipated and well-illustrated lecture will tell the story of Jim Ede, the making of his home at Kettle's Yard, the gallery's work today and its future plans. Ede had been a curator at the Tate Gallery and over the years he gathered a remarkable collection of his own, including paintings by Ben and Winifred Nicholson, Alfred Wallis, Christopher Wood, David Jones and Joan Miro, as well as sculptures by Henri Gaudier-Brzeska, Constantin Brancusi, Henry Moore and Barbara Hepworth.

Andrew Nairne was the Visual Arts Director at the Scottish Arts Council and is a former Director of the Museum of Modern Art, Oxford. Nairne was Executive Director of Arts Strategy at the Arts Council England before becoming director of Kettle's Yard in 2011.

**Members £2.50, non-members £4**

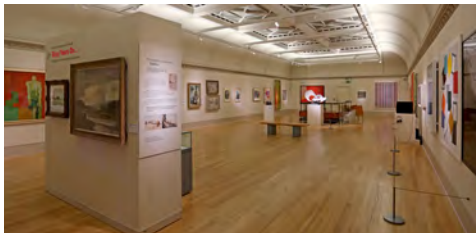


Felbrigg Hall, Felbrigg, Norfolk

## CONTINUING UNTIL SEPTEMBER Castle Museum & Art Gallery NCAS SIXTY YEARS ON...



Take this opportunity to visit *ncas Sixty Years On...*  
Over the past 60 years *ncas* has loaned, part-funded or gifted to the Castle Museum & Art Gallery many of the paintings and sculpture that form the basis of its post-war collection. This exhibition is in the Timothy Gurney Gallery and features most of those works.



Saturday 22 April to Sunday 29 October 2017

## THE MAKERS AT FELBRIGG HALL

The National Trust, in partnership with Norfolk Contemporary Art Society, have appointed three artists for *The Makers*, a contemporary art residency and commission project resulting in an exhibition at Felbrigg Hall, Norfolk. Selected from hundreds of applicants, the three artists are Alec Stevens, Florence Kennard and Alida Sayer. The selected artists had the opportunity to be inspired by the Felbrigg estate, its house and grounds, during a week-long residency from 3 to 8 October 2016. The work will be made and installed as an exhibition throughout summer 2017. See page 59 for full details and directions to Felbrigg.

Sunday 11 June to Sunday 27 August  
Mannington Hall, Norfolk NR11 7BB

## ABSTRACTED

An exhibition, *Abstracted*, will be installed in the café and grounds of Mannington Hall through their summer season.

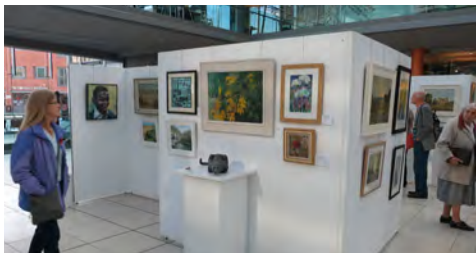
Artists shown indoors include Annie Brundrit, Rupert Mallin and Martin Battye, while Rose Davies and Bridget Heriz will have sculpture shown outside.



Open Wednesdays, Thursdays, Fridays 11am to 5pm,  
Sundays 12 noon to 5pm.

For details see [www.manningtongardens.co.uk](http://www.manningtongardens.co.uk)

## Norfolk & Norwich Art Circle



Founded in 1885 the Norfolk and Norwich Art Circle continues to play an important part in Norfolk's cultural scene. We exhibit at least twice a year in Norwich and Norfolk to showcase the best work of nearly 200 members. A wide range of work from traditional to modern in both subject and style can be seen from a group of professional and good amateur artists.

We provide a programme of demonstrations and talks as well as visits to studios, galleries and workshops. The Art Circle also has its own life group and frequent social events. For more info contact our secretary.

Secretary, Geoff Kitchen:  
[geoffandvirginia@tiscali.co.uk](mailto:geoffandvirginia@tiscali.co.uk). Tel: 01508 570732  
[www.nnartcircle.com](http://www.nnartcircle.com)

### Exhibition

Tuesday 20 June to Sunday 2 July 2017  
Norwich Cathedral Hostry, The Close, Norwich  
**NORFOLK AND NORWICH ART CIRCLE**  
**193rd EXHIBITION OF ART**



*Across the  
Thames  
by Sue  
Williams*



*Harry Baker with  
his sculpture*



*Duck a L'orange  
Pret a Manger  
by Clive*

### ARTIST DEMONSTRATIONS

**Non-members welcome, £3 on the door, 1.30–4pm**

**Sue Williams:** A Still Life in Watercolour  
Saturday 22 April, Nelson Street Infants School,  
Northumberland St, Norwich, NR2 4EH

**Jackie Devereux:** Progressive Watercolour  
Saturday 20 May, Framingham Earl High School

**Hashim Akib:** Acrylics  
Saturday 10 June, Framingham Earl High School

New members from 17 years up always welcome, whether you draw, paint, sculpt or have embraced the digital world.

Membership is £20 (£30 two at same address) per annum.  
Contact [jan.motley@btinternet.com](mailto:jan.motley@btinternet.com) Tel: 01508 49532

## Norwich 20 Group



*Group exhibition in the Forum*

The Norwich 20 Group has a firmly established regional art presence with active involvement by its selected members, including monthly discussion meetings and topical presentations by invited artists, members and licentiatees.

After 70 years membership has grown to more than 80 artists which include painters, sculptors, installation & conceptual artists, printmakers and photographers. The group maintains a vibrant connection with the city's cultural life. This includes regular exhibitions, liaison with Norwich University of the Arts, weekly life drawing workshops and displaying large format and experimental works within its annual exhibitions..

## Exhibitions and events

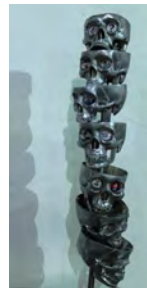
Thursdays from 7.30-10pm, summer term start and end dates to be confirmed – please refer to website  
**Riverside Studio, Wensum Lodge, King Street, Norwich**  
**WEEKLY LIFE DRAWING WORKSHOP**

This drop-in workshop is open to everyone, at £5 a time (plus a termly fee of £5), students are welcome. Come early to reserve a space. Bring your own drawing materials; boards, easels, chairs and donkeys provided.



*Left: Peter Offord*

*Right: Trump Towers by Chedghey*



**N20 Group host monthly open meetings at Park Lane Chapel, Norwich on first Tuesday of the month (except July & August) from 7.30pm**  
Check website for details, free to attend and open to all, please arrive in good time to get a seat.



Exhibition open daily Tuesday 13 to Saturday 24 June

## NORWICH 20 GROUP : LIGHT AT THE UNDERCROFT

Private view Monday 12 June from 6.30pm

A group show with a theme of 'Light' in the the city's atmospheric Undercroft subterranean gallery under the Memorial Gardens in St Peter's Street behind the market.

**Open daily 12–5pm**

Tuesday 18 to Sunday 23 July 2017

## NORWICH 20 GROUP 2017 AT THE FORUM

Private view Monday 17 July from 6.30pm

Norwich 20 Group's main annual exhibition in the bright public space of the Forum right in the centre of Norwich. *Also see page 13.*

**Open daily 10am–6pm**

Monday 17 to Saturday 22 July 2017

St Margaret's Church, St Benedict's Street

## NAKED IN NORWICH 8

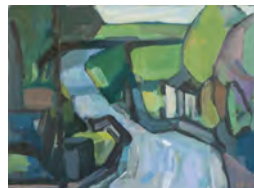
Private view Tuesday 18 July from 6.30pm

The 8th annual show of work produced by artists at the group's weekly life workshop the last year.

Exhibition open daily 10am–5pm



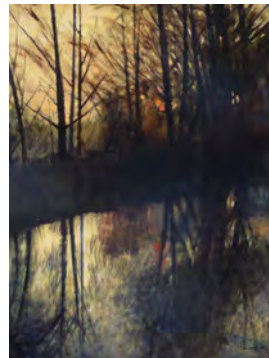
*David Jones, Warham Camp, Norfolk*



*John Midgley, Back Road*



*Jane Sanger,  
Orkney Shore*



*Gill Levin,  
Needham Reach at Dusk*

# Norwich Castle Museum & Art Gallery



Built by the Normans as a Royal Palace 900 years ago, **Norwich Castle** is now home to outstanding collections of fine and decorative art, archaeology and natural history.

Alongside its own exhibitions Norwich Castle hosts a regular programme of touring shows from major galleries and museums including Tate, V&A, British Museum, the Hayward Gallery and many more.

*The art programme at Norwich Castle is supported by the East Anglia Art Fund – a local charity dedicated to bringing great art to Norfolk.*  
[www.eastangliaartfund.org.uk](http://www.eastangliaartfund.org.uk)



## Ongoing exhibitions

Timothy Gurney Gallery

### NORFOLK CONTEMPORARY ART SOCIETY SIXTY YEARS ON...

Highlights from the Castle's Collection of acquisitions made by Norfolk Contemporary Art Society. See page 20 for more details.

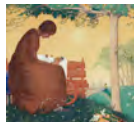


Sixty Years On...

### Colman Project Space

#### TO WATCH THE CORN GROW, AND THE BLOSSOMS SET: THE ART OF CLAUGHTON PELLEW

On the fiftieth anniversary of his death, discover the exquisite drawings and wood engravings of artist Claughton Pellew (1890-1966), inspired by the harmony of country life.



Claughton Pellew, *Mother and Child*, © estate of the artist

### Colman Watercolour Gallery

#### FROM NORFOLK TO NUBIA: THE WATERCOLOURS OF E.T. DANIELL

Edward Thomas Daniell (1804-1842) was a priest, artist and antiquarian who spent three years travelling across Europe and the Middle East producing these vibrant watercolours.



E.T. Daniell, *Figures at Corfu, Greece*, 1840  
© Norfolk Museums Service

## Special exhibition galleries

Saturday 4 March to  
Sunday 25 June 2017

### SMALL STORIES: AT HOME IN A DOLLS' HOUSE

Take a peek behind closed doors and discover the Small Stories of the tiny inhabitants of twelve of the V&A Museum of Childhood's most treasured dolls' houses.

Journey through 300 years of the history of the home, and listen to tales of marriages and parties, politics and crime. Visit a country mansion, a Victorian town house, a suburban semi and a high-rise apartment.

The finale of the exhibition is *Dream House* featuring magical, miniature rooms specially created by Norfolk architects, artists, makers, students and school groups.

There are also associated displays and events at Strangers' Hall, Norwich.



*Tate Baby House, England, 1760*  
© Victoria and Albert Museum,  
London

Saturday 29 July to  
Sunday 1 October 2017

### NELSON AND NORFOLK

This major exhibition gathers together some of the most important and potent objects connected to Admiral Lord Nelson, reflecting his naval victories, his relationships and above all his affection for his native county of Norfolk.

It examines Nelson's reputation and the extraordinary way in which his life and achievements were commemorated at the time of his death and have continued to exert a powerful fascination in the two hundred years since.

Among the significant objects on display are the black velvet drape from his funeral car, a uniform worn by a Greenwich Volunteer who guarded Nelson's coffin during his two day lying-in-state and the most iconic portrait of Nelson painted by William Beechey in 1801. The exhibition also features major loans from the National Maritime Museum, Greenwich.



*William Beechey, Lord Admiral Nelson (1801)*  
© Norfolk Museums Service

*There is an admission fee to Norwich Castle and access to all galleries and exhibitions is included.  
You can visit the shop and café for free*

# Norwich Cathedral



Located in the heart of Norwich in the beautiful Tombland area of the city, **Norwich Cathedral's Hostry Visitor and Education Centre** hosts a rolling programme of international, national and local exhibitions within the light and spacious exhibition hall.

As well as the exhibitions you can visit the awe-inspiring Cathedral, view the largest monastic cloister in England and enjoy the tranquillity of the Cathedral Close.

**Exhibitions are in the Hostry Visitor & Education Centre,**  
**Monday to Saturday 9.30am–4.30pm**  
**Sunday 12pm–3pm.**

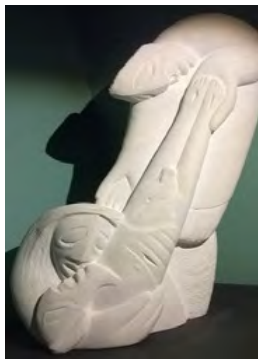
**Exhibitions are open to all and admission is free.**

## Exhibitions

**Wednesday 1 March to  
Saturday 15 April**  
**South Aisle**

### **NICHOLAS MYNHEER'S STATIONS OF THE CROSS**

This year's Stations of the Cross is a work in progress, with stone sculptures and sketches by the artist Nicholas Mynheer on display in the Cathedral's South Aisle.



We invite you to take part in the devotion of the Stations of the Cross, at 6.30pm on Sundays during Lent.

**Thursday 2 March to Saturday 15 April**

### **'THREADS THROUGH REVELATION' BY JACQUI PARKINSON**

A spectacular display of fourteen huge stitched panels of images from the Book of Revelation. The artist combines painted dyes, frayed multi-layered silks, and metallic leathers to invite the viewer to look at Revelation with fresh and hopeful eyes.



Thursday 20 April to  
Monday 29 May

### **THE CROSS: COMMISSION4MISSION**

An exhibition of works, talks and seminars by members of commission4mission (c4m) formed to help revive and

encourage the practice of commissioning and placing works of contemporary art in churches and other public places. The Cross includes personal responses, designs and concept drawings, digital prints, wood and stone carvings, pottery, jewellery, paintings and drawings.

Tuesday 6 June to Thursday 15 June

### **NORWICH UNIVERSITY OF THE ARTS : BISHOP'S ART PRIZE**

The prestigious Bishop's Art Prize exhibition returns with this year's theme 'Glimpses of Glory'.

Tuesday 20 June to Sunday 2 July

### **NORFOLK & NORWICH ART CIRCLE**

The society's annual exhibition featuring the creative work of members from across East Anglia.

*For more information see page 21.*

Friday 7 July to Saturday 15 July

### **ROYAL DRAWING SCHOOL YOUNG ARTISTS**

A selection of drawings from the Royal Drawing School's Young Artists programme for 10–18 year olds, featuring work from the Norwich Drawing Club, based at Lion House, St George's Works and led by local artist Doug Farthing. *Also see pages 38/39.*

Tuesday 18 July to Saturday 29 July

### **NORWICH & DISTRICT PHOTOGRAPHIC SOCIETY**

View colour and monochrome prints and digital images from one of the oldest photographic societies in the country at this annual exhibition.



Friday 1 September to  
Sunday 24 September

### **BEASTS AND MORE BEASTS BY JO DAVIS TRENCH**

This work is a visual dialogue with the religious and secular imagery of medieval church carvings. Jo Trench explores the form and symbolism of these demons, dogs, saints and lions, and their dual natures as demonstrated in the Bestiaries. The carvings are taken out of context, gathered, redrawn, distorted and re-imagined so that they inhabit new worlds.

Please visit [www.cathedral.org.uk](http://www.cathedral.org.uk) for more details.

# Norwich Print Fair

Now celebrating its 22nd year, the Norwich Print Fair once again brings together some of Norfolk and Suffolk's finest printmakers, displaying a wide variety of contemporary, hand made print techniques.

The Print Fair champions traditional methods such as mezzotint, etching, linocutting and wood engraving whilst also embracing newer practices such as screenprinting, gocco and collagraph, all within the unique historic setting of St Margaret's Church Gallery in St Benedict's Street.

From its inception, the Norwich Print Fair has sought to inform and inspire audiences showing the processes behind the creation of original prints.

This year the ever-popular 'Printmakers in Action Day' is on Sunday 10 September. Visitors are invited to observe the artists demonstrating their various techniques from 11am–4pm. This is a rare chance to witness new prints emerging from presses and screens and to see how it is done – and is not to be missed!



*St Margarets Church,  
St Benedicts Street*

Monday 4 to Saturday 16  
September 2017

## THE 22nd NORWICH PRINT FAIR AN EXHIBITION OF ARTISTS' ORIGINAL PRINTS

St. Margaret's Church Gallery  
St. Benedict's Street, Norwich

Exhibition open Monday to Saturday 10am to 5pm

Open Portfolio Days: Saturday 9 and Saturday 16

Printmakers in Action: Sunday 10 September  
11am–4pm – artists demonstrating their techniques.

Admission free

Saturday 9 and Saturday 16 September are 'Open Portfolio Days'. All the exhibiting artists will be present displaying extra, unframed work, sketchbooks and printing plates to illustrate their various techniques. The atmosphere is informal and friendly and everyone is happy to answer questions about their work.

The Norwich Print Fair remains the largest independent selling show of its kind in East Anglia and was the winner of the 2015 Norfolk Arts Award – the Hy Kurzner 'Arts Entrepreneur's award.

[www.norwichprintfair.co.uk](http://www.norwichprintfair.co.uk)



*Resting by Sarah Bays*



*Boxing Hare*

# Norwich Studio Art Gallery



Norwich Studio Art Gallery has been a part of the Norfolk art scene for over 10 years. Housed in a seventeenth century former butchers shop this small gallery is a colourful part of local life in Upper St Giles.

The gallery specialises in modern and contemporary fine art with a focus on Eastern European arts and crafts.

The Studio Art Gallery is open 10 am to 5pm Wednesday to Saturday. If you are making a special journey please phone in advance to check.

77 Upper St Giles Street, Norwich NR2 1AB

Tel: 01603 492093 email: [info@studioart.org.uk](mailto:info@studioart.org.uk)



Artist and curator Gennadiy Ivanov works prolifically from his studio in St Giles Street and at Outpost Studios in Gildengate House. He loves painting people and his work is vibrant, large and strong.

*He says 'My works are about the fragility of nature, humans and the World. I am inspired by nature and music. I capture the emotional and the intellectual energy of my vision to reprocess the structure of serendipity. I listen to and am influenced by my emotions and create a world that is a visual feast. This is a world that is resolved in colour, form, texture, and emotion.'*

Gena has also curated three successful exhibitions in the Undercroft in Norwich and is planning a fourth for September 2017 – called *The Art of Revolution*.

See page 49.







Norwich School is proud to announce upcoming listings for The Crypt Gallery. Located in the crypt space below the school chapel, this fantastic building, with its beautiful vaulted ceiling, now offers a gallery environment in which the school can host a variety of exhibitions.



NORWICH SCHOOL

## Norwich School & Crypt Gallery



*The Crypt Gallery  
entrance in  
Cathedral Close*

The Crypt Gallery is a new venture which Norwich School is keen to develop as a resource for the benefit of the whole Norwich community. With its convenient and central location within the Cathedral Close, it is hoped that the gallery will become an exciting addition for the visual arts within Norwich and Norfolk.

Whilst being a venue to showcase our pupils' work, the school also has ambitions to host contemporary exhibitions across all disciplines within art and design practice. Guest artists and curators will be invited to show their work and there is potential to run educational workshops to inspire children across Norfolk.

For more information please email  
[cryptgallery@norwich-school.org.uk](mailto:cryptgallery@norwich-school.org.uk)

## Exhibitions

In the Crypt Gallery

21 April to 3 May 2017

Showing the work of the Norwich School's current Art and Design GAP placements, Rachael Cocker and Emily Leason.

Opening times: Tuesday-Friday 11am-4pm  
Saturday 11am-3pm

At The Forum, Millennium Plain, Norwich  
Tuesday 20 to Saturday 24 June 2017

### NORWICH SCHOOL ART & DESIGN EXHIBITION 2017

In this four-day exhibition in the popular public space at The Forum, A-Level pupils from the Norwich School Art and Design course will be displaying a selection of their work in a range of media through Painting, Sculpture, Graphics, Photography, Film, Printmaking Textiles, Architecture and 3D Design.

The exhibition is a celebration of some of the creative and mature work found in all of these areas of study on themes such as the human form and residential visits. The Norwich School is extremely proud to present this high quality work produced by their students.

[www.norwichschooldesign.com](http://www.norwichschooldesign.com)  
[www.norwich-school.org.uk](http://www.norwich-school.org.uk)





# THE OAK CIRCUS CENTRE

Looking for an exciting new approach to fitness or a challenging new hobby? Want to get the kids off the sofa and onto their feet?

The Oak Circus Centre, home to professional company Lost in Translation Circus, runs courses and training in everything from acrobatics and circus skills to a erial disciplines such as trapeze, rope and Chinese pole.

Taught by active and experienced performers, our energetic classes take a holistic approach to health and will put a spring in your step and help improve mental agility.

Our regular Youth Circus and school holidays activities will keep your kids entertained and active.

[info@theoakcircuscentre.org.uk](mailto:info@theoakcircuscentre.org.uk)

[www.theoakcircuscentre.org.uk](http://www.theoakcircuscentre.org.uk)

St Michaels Coslany Church,  
Oak Street, Norwich, NR3 3AE.





music  
the arts  
space

The Old Church Hall, The Street  
Trowse, Norwich, NR14 8SX  
Tel: 07790 666052

Create is a flexible teaching, workshop and performance space in south Norwich.

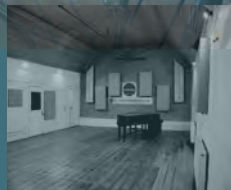
We provide music lessons as well as studio and performance facilities. Previously known as Purple Studios, the building has been renovated and is now a centre for learning music as well as a new venue for gigs, performances, classes and workshops.

It's run by musicians as a space for arts and the community – come and see what we have to offer. We are open to your ideas too – talk to us!

Check the website for up-to-the-minute information including Open Days throughout the year



Music Lessons  
Band Rehearsals  
Artist space  
Film and media workshops  
Theatre classes  
Art and craft classes  
Music Tech workshops  
Singing group  
Beat boxing workshops  
Drum workshops  
Music exams  
Live performances



You  
can hire  
our space  
too

[www.createnorwich.co.uk](http://www.createnorwich.co.uk)

For all ages



*East Gallery<sup>NUA</sup>, Denisa Ilie*

East Gallery<sup>NUA</sup> is a city centre public art space showcasing a programme of exhibitions by internationally recognised artists, curators and media practitioners. Exhibitions are accompanied by seminars and lectures delivered by specialists and curators, which enrich the University experience for students and those living and working in Norwich, as well as visitors to our city. East Gallery<sup>NUA</sup> is funded by Norwich University of the Arts.

East Gallery<sup>NUA</sup>, St Andrews Street, Norwich NR2 4AE

Tel: 01603 886385 [www.nua.ac.uk/gallery](http://www.nua.ac.uk/gallery)

@eastgallerynua

Open Tuesday to Saturday, 12 noon to 5pm,

Admission free

## Exhibitions

Until 1 April 2017

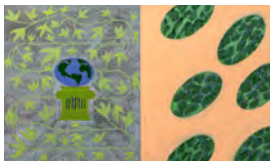
### JERWOOD PAINTING FELLOWSHIPS

Francesca Blomfield, Archie Franks and Dale Lewis.

Work by three artists selected as the Jerwood Painting Fellows 2016.



*Archie Franks  
'Time', watercolour on paper,  
2016*



*Francesca Blomfield  
'Split Screen Ivy in  
Moonlight', oil on  
canvas, 2016*



*Dale Lewis  
'Acid Man's Funeral',  
oil on canvas, 2016*

Saturday 6 May to Saturday 22 July 2017

## HANS-PETER FELDMANN – ART EXHIBITION

This exhibition of Hans-Peter Feldmann's work at East Gallery<sup>NUA</sup> will be the first major showing of his creative output in the region. Feldmann has exhibited in many major art venues worldwide, he was included in the Venice Biennale in 2009 and was awarded the prestigious Hugo Boss Art Prize in 2010.

Hans-Peter is well known for appropriating objects and making astute interventions that are often humorous, and frequently barbed.

Copies of old master paintings are revised and don red noses or incongruous tan lines: toys are used for their ability to cast unsettling shadows and versions of celebrated sculptures are luridly subverted – Michaelangelo's David, for example.

*With the support of Simon Lee Gallery, London*

### Advance notice:

Wednesday 30 August to Saturday 7 October 2017

## IN QUOTES

### Collage and Assemblage in Contemporary Art

An exhibition of work by Susan Hiller, Ann-Marie James, Sharon Kivland, Linder, John Stezaker and others.



*Hans-Peter Feldmann, 'Untitled', Courtesy of the artist and Simon Lee Gallery London/Hong Kong*



*Ann-Marie James, Musée Imaginaire, Plate 591 Et 592, collage, 2015, Courtesy Karsten Schubert, London*



## OPEN DAYS

### Undergraduate 2017

Friday 30 June  
Saturday 30 September  
Saturday 7 October  
Friday 27 October  
Saturday 4 November  
Friday 10 November  
Friday 1 December

### Postgraduate 2017

Thursday 23 March  
Wednesday 17 May  
Thursday 13 July  
Saturday 2 September

Work by Alice Potts  
BA (Hons) Fashion, at Graduate Fashion Week 2016

ANIMATION

ARCHITECTURE

CURATION

FASHION

FILM

FINE ART

GAMES

GAMES DEVELOPMENT

GRAPHIC DESIGN

ILLUSTRATION

INTERIOR DESIGN

INTERACTION DESIGN

PHOTOGRAPHY

TEXTILES

USER EXPERIENCE

VFX

## NORWICH UNIVERSITY OF THE ARTS

### We'd love to meet you

The best way to experience what NUA has to offer  
is to see for yourself at one of our open days

[www.nua.ac.uk/opendays](http://www.nua.ac.uk/opendays)



NORWICH  
UNIVERSITY  
OF THE ARTS



## OUTPOST



OUTPOST is an artist-run gallery, based in Norwich, committed to the uncompromising presentation of contemporary art. Since its founding in November 2004, OUTPOST has established itself as a leading centre for artist activity in the east of England.

Currently OUTPOST produces a core programme of seven exhibitions per year alongside a series of events, offsite projects, collaborations and commissioned artist editions.

**OUTPOST Gallery**, 10b Wensum Street, Tombland, Norwich, Norfolk NR3 1HR Tel: 01603 612428

Since occupying Gildengate House on Upper Green Lane in 2009, OUTPOST has converted the large open plan interior of the former office block into affordable artist studio spaces. The studios accommodate around 85 Norwich-based artists, ranging from recent graduates to internationally exhibiting practitioners. As well as housing studio spaces, Gildengate House acts as a satellite venue for OUTPOST's additional exhibition and events programme, hosting residencies, artist talks, film screenings and performances. OUTPOST operates a membership scheme and receives support from Arts Council England.

### **At Tombland, OUTPOST Gallery**

Friday 24 March to Sunday 16 April 2017

**REBECCA ACKROYD**

**HOUSE FIRE**

Opening: 23 March, 6-9pm

Friday 5 May to Sunday 28 May 2017

**ANDREW GILLESPIE**

Opening: 4 May, 6-9pm

For updates follow OUTPOST on Facebook, Instagram and Twitter. Enquiries email [questions@norwichoutpost.org](mailto:questions@norwichoutpost.org)

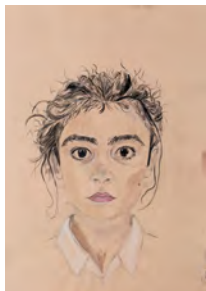
**OUTPOST Studios**, Gildengate House, 1 Upper Green Lane, Norwich NR3 1AX.

## Royal Drawing School



The Royal Drawing School is an independent, not-for-profit resource that aims to raise the standard and profile of drawing through teaching and practice. It is one of only a few institutions in the world offering in-depth, quality tuition in drawing from observation.

Drawing is a primary language natural to all human beings, and fundamental to all aspects of learning and thinking from childhood onwards. It is a crucial route to innovation across the creative disciplines and beyond, from fashion, fine art and animation to filmmaking, product design and engineering. For some people, drawing is the easiest way of thinking.



Lila 14 years



By offering tuition and resources to art students, artists, children and the public, it aims to address the permanent need for high-quality drawing teaching in the UK, filling a gap left by the steady erosion of observational drawing from the study of art in higher education and in schools.

Founded in 2000 by HRH The Prince of Wales and artist Catherine Goodman as The Prince's Drawing School, it became the Royal Drawing School in 2014.

For more information visit [royaldrawingschool.org](http://royaldrawingschool.org) or phone 020 7613 8568

## Saturday morning Drawing Club at Lion House, Muspole Street, Norwich

The Royal Drawing School offers a weekly Drawing Club in 10-week terms in Norwich at a 1st floor studio in Lion House, St George's Works, Muspole Street.



*Lion House entrance*

Drawing Clubs are for 10 to 14 year olds who have a passion for drawing and want to learn and improve their skills.

Regular drawing at any age can enhance focus and concentration and increase self-esteem, and this can be especially beneficial for school-age children.

The Drawing Clubs help children retain and develop these drawing abilities and sustain their enthusiasm for self-expression within an artist-led environment.

The skills learned can also support students' pursuit of a wide range of creative subjects in school, further and higher education, and open doors to careers in the arts, design, architecture, and science.

Drawing Clubs are led by professional artists who are alumni of the Royal Drawing School's postgraduate programme.



### SATURDAY DRAWING CLUB SESSIONS IN NORWICH for 10–14 years olds

at Lion House, St George's Works,  
Muspole Street, Norwich NR3 1DJ

**Spring term:** 21 January to 25 March 2017

**Summer term:** 29 April to 1 July 2017

11am–1pm

Price: £150 for 10 sessions

Some scholarship places are available. Please apply using the application form on [www.royaldrawingschool.org](http://www.royaldrawingschool.org)

For more information and to book online, visit:  
[www.royaldrawingschool.org/courses/young-artists/drawing-clubs](http://www.royaldrawingschool.org/courses/young-artists/drawing-clubs) or phone 020 7613 8559

## Sainsbury Centre for Visual Arts



The Sainsbury Centre for Visual Arts is one of the most prominent university art galleries in Britain, and one of the nation's principal centres for the study and presentation of art. Designed by acclaimed architect Norman Foster, it is one of the most important buildings of the late twentieth century.

The Centre owes its existence to the generosity of Robert and Lisa Sainsbury who donated their extraordinary art collection which includes works dating from prehistory to the present day from across the globe. Alongside this sits two further principle collections: The Anderson Collection of Art Nouveau, donated in 1978 by Sir Colin Anderson; and the University Collection of Abstract and Constructivist Art, Design & Architecture established by the University in 1968.

The Sainsbury Centre's art collections are displayed across the ground floor of the building whilst on the lower level are the magnificent newly-created exhibition galleries, providing the largest temporary exhibition space in the East of England.

The Sainsbury Centre offers an award-winning learning programme of gallery talks, lectures, and art workshops.

**Easter 2017 opening times:**

Closed Thursday 13, Friday 14, Monday 17, Tuesday 18 April

Open 10am–5pm, Saturday 15 April (Easter Saturday) and Sunday 16 April (Easter Sunday).

Special exhibitions may be subject to charges.

For more information and bookings visit [www.scva.ac.uk](http://www.scva.ac.uk).

### Special exhibitions

**Until Sunday 19 March 2017**

#### **MASTERS OF JAPANESE PHOTOGRAPHY**

Witnesses to a generation that grew up in the aftermath of the Second World War, their work addresses both their personal experiences and the evolution of Japanese society. From Araki's exuberant flowers to Hosoe's lyrical portraits, these fascinating images encapsulate the natural beauty and social complexity of Japan.

**£7/£6 concessions/ Free for Sainsbury Centre Members and Student Members**

*The Sainsbury Centre thanks Simon Blakey, Michael Hoppen Gallery, Eikoh Hosoe and Judith S. Novak for their generous support of this exhibition.*



Saturday 8 April to  
Sunday 20 August 2017

## PAUL NASH

Paul Nash (1889–1946) is regarded as one of the most important British artists of the early twentieth century.

Renowned as an official war artist in both the First and Second World Wars, he was fascinated by the landscapes of Southern Britain, especially those evoking its ancient history.

Spanning a lifetime's work from his earliest drawings to iconic war-time paintings, the exhibition examines Nash's work in an international context and considers his position at the forefront of British modern art. In the 1930s and 1940s Nash's experiments in photography, collage and painting often involved juxtapositions of found objects and landscapes. He worked closely with Eileen Agar during these years and materials from Agar's archive will be shown alongside Nash's work.

*The Cliff to the North* (1912), a significant early drawing featured in the exhibition, was inspired by Nash's visit to North Norfolk in December 1912.

**£12/£10.50 concessions/ Free for Sainsbury Centre Members and Student Members**

*The exhibition is organised by Tate Britain in association with the Sainsbury Centre and the Laing Art Gallery.*



Paul Nash 1889–1946  
*Totes Meer (Dead Sea)* 1940–41  
copyright Tate. Presented by the War Artists Advisory Committee, 1946



Friday 12 May to Sunday 1 October 2017

## RANA BEGUM

Rana Begum is one of the most exciting artists working in Britain today. She has completed commissions in Cambridge, Cleveland Clinic, Ohio and Kings Cross. This will be her first museum show anywhere in the world.

Rana Begum started as a painter but her discovery of the work of USA modern masters such as Donald Judd and Dan Flavin led her to re-examine her practice which subsequently relates and responds to Minimalism and various idioms of abstraction particularly constructivism and Concrete art.

Her use of space, colour and form will transform the Mezzanine Gallery with an immersive installation and wall-mounted reliefs, taking advantage of the light and space of Norman Foster's architecture.

**£7/£6 concessions/ Free for Sainsbury Centre Members and Student Members**

## Permanent collection

### THE ROBERT & LISA SAINSBURY COLLECTION

#### The Living Area

The Robert and Lisa Sainsbury Collection features work spanning 5,000 years of human creativity. Permanently displayed in the Living Area Gallery, the collection includes major holdings of art from Oceania, Africa, the Americas, Asia, the ancient Mediterranean cultures of Egypt, Greece and Rome, Medieval Europe, and includes a significant number of works acknowledged as seminal examples of European modern art, such as Pablo Picasso, Edgar Degas, Francis Bacon, Jacob Epstein, Henry Moore, Alberto Giacometti and Amedeo Modigliani. In 1978 the presentation of ancient world art alongside modern masters was greeted as a revelation, today it continues to provide juxtapositions across time and culture that can inspire and surprise.

The East-End gallery provides the opportunity for greater freedom in examining the nature of the collections and their particular historical context. There is a regular programme of changing thematic displays with greater interpretation as well as featuring the collection of modern ceramics including masterpieces from Lucie Rie and Hans Coper. In addition, a flexible project space alongside shows contemporary or historical displays that relate and inform the Sainsbury Collection.

Opening times:  
Tuesday–Friday  
10am–6pm,  
Weekends 10am–5pm.  
Closed on Mondays  
and bank holidays.

Admission to the  
Sainsbury Centre and  
permanent collections  
is free.

*Bucket man,  
John Davies (b. 1946),  
England, 1974, mixed media.  
h. 210.0 cm;  
base 152.4 x 137.2 cm.  
Acquired from the artist in  
1974.*



Tel: 01603 593199 email: [scva@uea.ac.uk](mailto:scva@uea.ac.uk)  
Facebook: [/sainsburycentre](https://www.facebook.com/sainsburycentre) Twitter: [@sainsburycentre](https://twitter.com/sainsburycentre)



*Little Dancer Aged 14  
1880–1881  
Edgar Degas (1834–1917)  
France  
Bronze, fabric  
UEA 2*

#### Did you know that:

- The Sainsbury Centre for Visual Arts was architect Sir Norman Foster's first public building
- The Robert and Lisa Sainsbury Collection is one of the few intact modernist collections of the 20th century and is of national and international importance
- The permanent collection is displayed in the Living Area gallery at SCVA, which is a reflection on how the Sainsburys surrounded themselves with art in their own home.

## The South Asia Collection Museum and Shop



*The Old Skating Rink Gallery*

A unique collection of South Asian decorative arts housed in a Victorian architectural gem, a restored skating rink in the city centre.

South Asian arts and craft objects (woodwork, metalwork and textiles) are displayed together with a range of traditional furniture, architectural features, paintings and prints.

Close to the Forum and the market, the historic building on Bethel Street is also home to Country and Eastern, an emporium with decorative furnishings and gifts direct from South Asia.

## Exhibitions

Highlights from the permanent collection are exhibited in regularly changing displays, including a gallery space which hosts exhibitions of paintings and prints from the 18th century, through to contemporary works.



*Bheem Ke Udar. Aquatint after James Baillie Fraser. 1820*

Free entry.

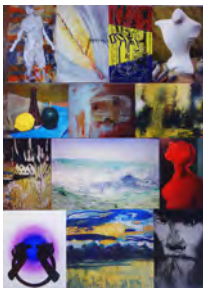
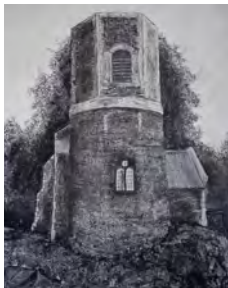
Open daily except Sundays and bank holidays,  
9.30am–5pm

For more details or to arrange tours, please contact:  
The Old Skating Rink Gallery, 34–36 Bethel Street,  
Norwich, Norfolk NR2 1NR  
Tel: 01603 663890 Email: [info@sadacc.co.uk](mailto:info@sadacc.co.uk)  
[www.sadacc.co.uk](http://www.sadacc.co.uk)





## St Etheldreda's Artists' Studios



St Etheldreda's Artists' Studios is housed in the beautiful church of St Etheldreda, opposite Wensum Lodge in King Street. It is the longest running artists' studios in the city in one of the city's oldest streets. Currently thirteen members have working spaces in the church.

Every first Saturday of the month the studios are open from 12 to 4pm to show an exhibition of fresh work by one of the member artists. All are welcome.

St Etheldreda's Artists Studios, King Street,  
Norwich NR1 1QH. Telephone 01603 631928 Contact:  
Jack Godfrey, [godfrey@talk.com](mailto:godfrey@talk.com) or  
Linda Chapman, [lindachapman49@hotmail.com](mailto:lindachapman49@hotmail.com)

### Exhibitions

First Saturday openings 12–4pm

1 April : Paul Meade  
1 July : Stephen Palmer  
5 August : Jude Chaney

Saturday 29/Sunday 30 April 12–4pm

### MEDIEVAL CHURCHES WEEKEND

[www.flintspiration.org](http://www.flintspiration.org) for more info

Saturday 3/Sunday 4 and  
Saturday 10/Sunday 11 June 2017  
10am–5pm

### NORFOLK & NORWICH OPEN STUDIOS

Free drawing day for all on  
Sunday 11 June from 11am–4pm



Jude Chaney



Stephen Palmer



Paul Meade

## Shoe Factory Social Club, St Mary's Works, St Mary's Plain, Norwich and Lion House, St George's Works, Muspole Street, Norwich



Two new areas of the city are set to become hotspots for creative development. Recently purchased by development company Architekton, the Shoe Quarter occupies the two sites at St Mary's Works and St George's Works on either side of Duke Street and bounded by the ring road, Oak Street, St Mary's Plain, Muspole Street and Colegate are destined for a mixed use development to be built over the next ten years.

In the meantime, some of the buildings awaiting development have been offered to artists and creative groups. The ground floor of St Mary's Works is The Shoe Factory Social Club, available for film showings, performances, exhibitions and shows that need space.



Lion House in Muspole Street is now a home for artists and makers: Norwich Hackspace – a member-led maker space, Artpocket (see page 7), Geneality Art, Salt Glass Studios, The Workrooms – which includes Aviva Leigh Creative Textiles, artist Suzanne Antonelli and ceramicist Ali Hewson. The Royal Drawing School runs Saturday morning drawing sessions for 10–14 year olds (see pages 38/39) and many of the artists will be running courses in drawing, painting, printing, crafts, textiles and dyestuffs for all ages.

**For more information on the Shoe Factory Social Club**  
see [www.shoefactorysocial.club](http://www.shoefactorysocial.club)

**For information about Lion House**  
email [info@norwichhackspace.org](mailto:info@norwichhackspace.org)  
or see [www.lionhousestudios.co.uk](http://www.lionhousestudios.co.uk)



LION HOUSE  
St George's Works, Muspole Street

## Theatre Royal Norwich



Theatre Royal Norwich hosts four exhibitions each year by prominent, professional artists from the region. They are kindly sponsored by Targetfollow Estates Ltd. and curated by Sarah Cannell. The work is displayed in the Adnams Circle Bar on the first floor at the Theatre Royal.

All work can be purchased from the box office and the exhibitions are open 9.30am–6pm, Monday to Saturday.

Theatre Royal, Theatre Street, Norwich NR2 1RL

Email: [sarah.cannell1@gmail.com](mailto:sarah.cannell1@gmail.com)

## Exhibitions

Thursday 26 January to Monday 24 April 2017

### SHAHRAM SAADAT : SHIFTING LANDSCAPES

Fresh from the Tate Modern's Offprint fair Shahram is exhibiting photographs from locations around Europe, with a special interest in architecture and people.

The 'Shifting Landscapes' exhibition is a collection of images that have been put together from a variety of travels. It is the artist's attempt to capture well photographed locations in a new light, with emphasis on structure, movement and perspective. By juxtaposing certain elements, it focusses on how we engage within our urban environment. This demonstrates that this is not purely about how the landscape changes with different countries and cultures but also how our perception alters.



Thursday 27 April to Sunday 16 July 2017

## JOHN MIDGLEY : PAINTING THE BACK ROADS

A major collection of landscape paintings made from studies of off-the-beaten-tracks in Norfolk, where John 'paints the ordinary'.

John is a long standing member of the prestigious Norwich 20 Group. His paintings feature rich, glowing colours and carefully constructed compositions.



*Dockyard, John Midgley*



*Sally Hirst*



Friday 28 July to Monday 2 October 2017

## SALLY HIRST: PAST, PRESENT, IMPERFECTIONS

Sally Hirst is widely known for her images of the urban environment and industrial architecture. She has spent the past year immersing herself in the architectural and industrial history of Norwich and creating this series of painting, prints and collages as a response to her research.

The work reflects the texture, architecture, signage and structures of our fine city. Her sensitive depictions fall between abstraction and realism and invite you to question what still exists and what has gone before; Buildings you will recognise are depicted alongside those that now only exist in old photographs. Through the layers of information and meaning, transparency and opacity, ambiguity and nuance these images aim to inform and enrich your understanding of our fine city.

Exhibition programme supported by



# THE UNDERCROFT GALLERY

The Undercroft is a raw and robust space tucked away at the back of Norwich Market, under the Memorial Gardens in front of City Hall.

Owned and managed by Norwich City Council, it is made available for artists and groups to curate exhibitions at a minimal charge – contact [clarehubery@norwich.gov.uk](mailto:clarehubery@norwich.gov.uk)

The entrance is tucked away down a set of steps – it is Norwich's stunning secret venue

## EXHIBITIONS 2017

4 to 24 March: FRESH City College Norwich  
3 to 25 April 2017: Anglian Potters Spring exhibition  
23 to 29 May : TARDIS – Chapel Break Infant School  
13 to 24 June : Norwich 20 Group (see page 23)  
July (tbc) : The Lonely Arts Club  
5 to 20 August : Breckland Artists (see page 50)  
5 to 30 September : The Art of Revolution  
curated by Gennadiy Ivanov (see page 49)  
October : UNA Gallery  
November : Raymond Noakes  
For times, updates and extra exhibitions  
[www.artinnorwich.org.uk/the-undercroft](http://www.artinnorwich.org.uk/the-undercroft)



# The Art of Revolution



The Art of Revolution is the fourth exhibition curated by Norwich-based artist Gennadiy Ivanov in the Undercroft in Norwich. Originally from Belarus, Gennadiy makes full use of his international connections bringing together a wide range of professional artists tackling a political theme.

This exhibition is dedicated to the 100th anniversary of the Bolshevik October Revolution and explores its significance and cultural legacy. This will be expressed through industrial art, social art, fine art, music, film, theatre, fashion, performance, design, sex, and political activism.

**Contact** [info@studioart.org.uk](mailto:info@studioart.org.uk) 01603 492093

5 to 30 September 2017, daily 11am–5pm  
The Undercroft, St Peter's Street, Norwich

## THE ART OF REVOLUTION 1917–2017

organised and curated by Gennadiy Ivanov  
with the following artists:

Alexandra Blythe, Andrew Jay, Andy Hornett, Deanna Tyson, Elena Nikiforova, Gennadiy Ivanov, Glenn Goring, Frances Martin, Helen Wells, John Sparks Julia Cameron, Linda Johnson, Martin Swan, Monika Wesselmann, Natasha Day, Peter Offord, Richard Cleland, Rob Bellman, Robert Nairn, Simon Marshall, Sophia Shuvalova, Sue Law, Tanya Goddard, Viv Castleton.

### Events and performance as part of Art of Revolution

- Special music commission for the Art of Revolution exhibition by Joanna Abel
  - Helen Wells, Alexey Ustin and Total Ensemble Theatre Company will perform in the Undercroft during the exhibition – follow on Facebook for dates
  - Float in Lord Mayor's Procession Saturday 8 July on the theme of Revolution with avant-garde costume and music
- '100 years ago the Socialist Revolution in Russia brought radical approaches in art to the world.*

*Why don't we stop for a moment, take a look back and risk plunging into the world of revolutionary art?  
We will see its relevance for today but through the lens of new technologies and media.'* Gennadiy Ivanov





# Breckland Artists

www.brecklandartists.com



© Alan Porter  
by Alan Porter

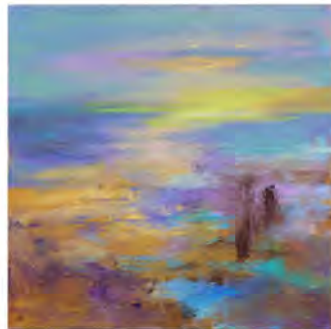
Find us in the Undercroft between Norwich Market and City Hall. Directly beneath the Lutyens designed Memorial Gardens.

at the **UNDERCROFT**  
Sat 5th - Sun 20th August

Breckland Artists is a group with their roots formed in the camaraderie of Norfolk & Norwich Open Studios over 13 years ago. Creating original artworks in 2D & 3D, Breckland Artists will be showing a wide range of styles, both traditional and contemporary.



by Heather Graham



Our Last Day by Helen Du Feu



Vitrigraph plate by Marie Dawe

Saturday 5th - Sunday 20th August  
Mon- Sat 10am-5pm + Sun 10am-4pm  
Afternoon Tea with the artists 2-4pm on 5th

For membership applications and further information, please go to [BrecklandArtists.com](http://BrecklandArtists.com) and fill in the contact form.



## Urban Art Fair



Norwich City Council has a dedicated culture and events team which supports community and cultural organisations by providing advice, support and cultural grants. The team also delivers a programme of free events throughout the year and supports artists by creating opportunities wherever possible, including the annual Urban Art Fair as well as Art on the Railings on the last weekend of every month March to November.

The Culture and Events Team also manages the Undercroft which is a year-round exhibition space under the Memorial Gardens – see page 48.

## Art outdoors

Sunday 9 July 11am–4pm

St Peters Street, Norwich

### URBAN ART FAIR

We are inviting artists to take part in this years' Urban Art Fair on Sunday 9 July. This popular event is part of the annual Lord Mayor's Celebration which brings music, carnival, outdoor theatre, street performances, a funfair, fireworks and much more to the streets of Norwich.

The Urban Art Fair will be held in front of City Hall, on St Peters Street and will include work by over 30 artists, workshops and entertainment. There will be the opportunity to buy and sell artwork, talk to artists and enjoy the atmosphere.

Panels cost £10 each and are 3.5m x 2m. You can apply as an individual or as a group for 1 or more panels.

If you would like to take part please complete the application form on [www.norwich.gov.uk](http://www.norwich.gov.uk) or contact Clare Hubery [clarehubery@norwich.gov.uk](mailto:clarehubery@norwich.gov.uk) or phone 01603 212241.

The deadline for submissions is Friday 26 May.

For more information see [www.norwich.gov.uk](http://www.norwich.gov.uk)

## North of the City – take a walk



The north of the city is rapidly becoming becoming a hot-spot for new artists and creative businesses.

Around Duke Street, Anglia Square, Pitt Street, Magdalen Street and St Augustines there is a new wave of artist-led regeneration. In all cities there is an area which gets a bit run down and property is left empty. As values drop, it becomes feasible for artists and start-up businesses to rent space. In some cases, enlightened developers allow artists to have spaces for 'meanwhile use' until areas can be redeveloped such as St Mary's and St George's Works just off Duke Street where the Shoe Factory Social Club and Lion House are accommodating artists and creative uses.

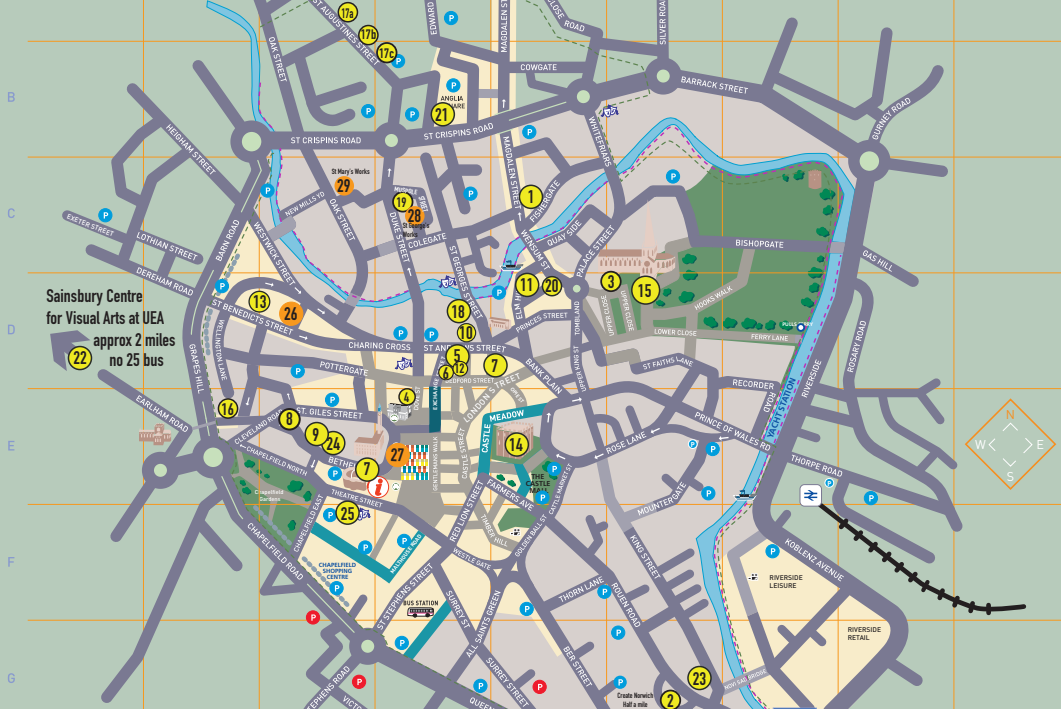
New galleries such as The Barber Shop in Magdalen Street, the Art Café, Nunnsyard, Yallops and Thirteen(a) in St Augustines Street and Print to the People, Men's Shed in Pitt Street. Norwich Hackspace, Artpocket, the Royal Drawing School and the Workrooms have settled in Lion House Studios in Muspole Street, right opposite the Muspole Street Studios which has accommodated artists and potters for many years. Many of the studios in this area offer hands-on sessions in printmaking, pottery, drawing, textiles, illustration and painting.

Member-led group OUTPOST has run a gallery in Tombland for over 10 years and also manages around 80 artist studios in Gildengate House in Anglia Square. These all give opportunities to emerging artists, students and creatives of all ages.

As well as galleries and art spaces, there are vintage shops, makerspaces and artist shops, ethnic foods, and antiques and collectables in dig-around caverns where you will find interesting bargains and artefacts.

Take a walk along Magdalen Street and find Anteros Arts, North Café, Looses, The Dandy Horse (bike and coffee shop), Aladdins Cave, The Barber Shop (gallery space) the Make Place and much more.

So this is definitely an area of the city to have a poke around in and explore – please do!



## GALLERIES AND ART VENUES IN THE CITY OF NORWICH

See page 69  
for key

## A quick guide to art in Norwich



*View of Norwich from City Hall towards Norwich Castle*

Norwich is a medieval city which, in its hey-day, rivalled London in terms of size and was, for many years, England's second city, being only 100 miles from the court of London. It was a wealthy city with its fame built on the textile trade, weaving and particularly wool. Nearly half of the population was French, Dutch or Flemish and engaged in the weaving trade – hence the name of the football club, the Canaries, called after the birds which the weavers kept for company.

In the Industrial Revolution, Norwich was off the beaten track for commerce and transport and so attracted artists, philosophers and radical thinkers, and was home to the famous Norwich School of Painters. Many religious non-conformists also settled here and the place became a hotbed for artists and writers, as it is today. It is also now a UNESCO City of Literature.

Amongst its many cultural assets Norwich can claim:

Norwich University of the Arts, one of the best universities for courses in animation and film, fine art and illustration, architecture, games design, graphic design, fashion, media and much more, including East Gallery<sup>NUA</sup> in St Andrew's Street.

Norwich Castle and the Sainsbury Centre for Visual Arts – world-class venues, attracting national-level touring shows, with permanent collections of World Art as well as work by Picasso, Henry Moore, Francis Bacon, Modigliani, Degas and local masters – Munnings and the Norwich School of Painters including contemporary work from artists such as Colin Self.

Norfolk and Norwich Festival in May, an international multi-arts annual festival with 17 days of concerts, outdoor arts and theatre, both mainstream and left-field, as well as the Norfolk & Norwich Open Studios. Norwich Arts Centre is a multi-arts venue with a visual art programme which includes live art, photography and digital art and Norwich Cathedral has an events programme with a regular cycle of exhibitions in the Hostry as well as the Hostry Festival in September and October.

There are a number of artist-led galleries and studios, notably OUTPOST, Dyad, Fairhurst, Yallops, Nunnsyard and St Etheldredas – and some well-established and very active, artists' groups such as Norfolk Contemporary Art Society, Anteros Arts Foundation, Norwich 20 Group, SAVORR and the Lonely Arts Club.

Venues such as the Forum, Norwich Arts Centre and St Margaret's Church all support artists and host exhibitions along with several commercial galleries such as Art 18|21 and Mandell's. As well as Art in Norwich partners, there are over 900 practising visual artists and groups in Norfolk and a thriving underground arts scene in addition to the main institutions. [www.artinnorwich.org.uk](http://www.artinnorwich.org.uk)

# OUT OF TOWN



Laurence Edwards *Heads on Cley beach* Photo Matthew Cooper

## ART IN NORFOLK

Norwich is set in the county of Norfolk. It is the centre of a busy rural hinterland, varied and beautiful. Because there is space, there are over 800 visual artists working here and it has a long history of being a creative place. And the skies and landscapes have been an ongoing source of inspiration too. In the following pages you will find some of the many galleries and exhibitions out and about in the county.

For more, check local tourist information, the National Trust properties Felbrigg and Blickling and the market towns of Wymondham, Loddon, Harleston and Diss to the south, Holt, Aylsham, Reepham, Cromer, Sheringham, Blakeney to the north, Great Yarmouth to the east, Kings Lynn to the west.

Norfolk & Norwich Open Studios is a great opportunity to get right into the nitty-gritty of artists' working practice and if you fancy some non-art time, you can't beat the Norfolk coastline, the Brecks and Broad.

Explore Norfolk – you will get hooked!

## WHERE TO GO IN NORFOLK

As well as exhibition venues listed in this booklet we have included other locations of interest and that often have exhibitions. The whole Norfolk coast is beautiful and varied and the coast road offers splendid views over saltmarshes and beaches. The north coast is especially good for bird watchers, seals, sailing and fishing.

A drive along the coast will take you through many picturesque villages with galleries and craft shops. Inland, market towns are also local hubs of activity. To the west and south are the Brecks – open heathland and forests.



## KEY

- 30 St Margaret's Church, Cley-next-the-Sea
- 31 Felbrigg Hall, Felbrigg
- 32 Grapevine Gallery, Burnham Market
- 33 GroundWork Gallery, King's Lynn
- 34 Harleston & Waveney Art Trail
- 35 Norfolk Wildlife Trust at Cley Marshes Visitor Centre
- 36 Pocock's the Artmonger, Burnham Market
- 37 Waveney Valley Sculpture Trail @Raveningham Centre
- 38 St Nicholas' Church, Salthouse
- 39 Skippings Gallery, Great Yarmouth
- 40 Wymondham Arts Centre
- 41 Mannington Hall & Gardens
- 42 The Old Workshop Gallery, Corpusty
- 43 Time & Tide Museum, Great Yarmouth
- 44 The Gallery Norfolk, Cromer

Other places to visit:

Barrington Farm Outsider Art Gallery

Loddon Arts Centre, Loddon

Holt – a Georgian market town with galleries and bookshops

Salt Glass Studios at Burnham Overy and Belfry Arts at Overstrand. Wells, Sheringham, Blakeney and Cromer are lovely for a day out as is the whole Norfolk coast –

see [www.visitnorthnorfolk.com](http://www.visitnorthnorfolk.com)

See page 53 for a map of Norwich venues and contact details



St Margaret's Church, Cley-Next-The-Sea

North Norfolk Exhibition Project (NNEP) organises Cley Contemporary Art, a successful annual open-call exhibition at St Margaret's Church, Cley-next-the-Sea and around the village, creating a stimulating art trail in the most amazing surroundings. NNEP was established in 2000 in direct response to the lack of exhibition opportunities for contemporary visual arts in North Norfolk, which is home to over 300 practising visual artists.

NNEP is managed, run and delivered by a core group of highly dedicated and energetic volunteers with additional support from a broader pool of artists.

### 6 July to 6 August 2017

Each year, NNEP invites a guest curator to select from an open call for submissions and create the exhibition within the church and other venues in Cley-next-the-Sea, North Norfolk. Annually they attract more than 6000 visitors to the exhibition.



From Cley 16

*Cley 17: Connectivity* is selected by curator, artist and ceramicist Marion Stuart who says '*Connecting is inherently human and one way to connect to the world is through art.*'

Pieces by 63 selected artists with Norfolk connections will be exhibited in St Margaret's Church, Made in Cley, Cley Harnser, Norfolk Wildlife Trust Visitor Centre, and on the beach. The church is the main venue and is open daily 10am-5.30pm.

There is a series of accompanying events and workshops published on the website and in the brochure including:

13/20/27 July : Pop-up Cafe in Cley Church

15 July : Flora Pethybridge and Ashley Ramsden

18 July : Dawn Walk for World Listening Day

26 July : An evening with the Batman

See [www.cleycontemporaryart.org](http://www.cleycontemporaryart.org) for full details as they become available.





# grapevine

a beautiful and highly  
regarded art gallery  
in Burnham Market

One of Norfolk's principal galleries,  
the Grapevine Gallery is about to enter its tenth  
year in Burnham Market in North Norfolk.

With an eclectic mix of contemporary paintings,  
prints, ceramics and sculpture, the gallery aims to  
be both welcoming and interesting. Showing a  
personal selection of the best of the region's art,  
including nationally recognised artists such as  
Gerard Stamp, Ruth McCabe, Michael Chapman  
and Neal French - another significant part of the  
portfolio is work from artists and potters  
across the country.

**Overy Road, Burnham Market, Norfolk PE31 8HH**  
**01328 730125 [www.burnhamgrapevine.co.uk](http://www.burnhamgrapevine.co.uk)**

# The Makers at Felbrigg Hall



*Felbrigg Hall © Alida Sayer*

Felbrigg Hall is a seventeenth century house that has grown gradually over more than three centuries. It still retains the feeling of a family home and houses one of the largest collections within the National Trust.

**Felbrigg Hall, Felbrigg, Norfolk, NR11 8PR**

**Tel: 01263 837444** [www.nationaltrust.org.uk/felbrigg](http://www.nationaltrust.org.uk/felbrigg)

**For opening times and admission prices please see website. National Trust Members free.**

*A partnership between the National Trust and Norfolk Contemporary Art Society with support from Arts Council England, East Anglia Art Fund, Norfolk County Council and Norwich University of the Arts.*

## Exhibition

Saturday 22 April to Sunday 29 October 2017

### THE MAKERS

An exhibition of contemporary art inspired by a tradition of craftsmanship at Felbrigg Hall.

Florence Kennard, Alida Sayer, Alec Stevens

Following a national open call, three artists were selected for a residency offering the opportunity to immerse themselves in the collection at Felbrigg Hall. They were then commissioned to make the work in this exhibition.

*The Makers* exhibition continues the tradition of commissioning new work from artists, giving visitors the chance to see Felbrigg in a new light.

*See also page 20.*



*Fireworks © Alec Stevens*



*Felbrigg Still © Florence Kennard*



## On The Stony Path **herman de vries**

**11 March - 30 June**

Stones and raw earth, ordered and displayed in series by an artist-naturalist. The first UK show for a distinguished international figure.

Upstairs at GroundWork...

The Meandering Eye:

**Sibylle Eimermacher**

Shaped by Stone:

**Tom Baskeyfield and**

**Mario Popham**

## With The Birds **Jayne Ivimey** **Milo Newman** **Suky Best**

**14 July - 10 September**

Rare images of pink-footed geese at night, an unusual observation of flight, and a moving tribute to the Red List of endangered species.

## Fire and Ice **Gina Glover** **Jessica Rayner**

**14 October - 16 December**

An artistic examination in photography, video and installation, of climate change and some of its causes and its very dramatic effects.

Always Upstairs at GroundWork...

**Small works of art and jewellery by**

Liz McGowan, Linda McFarlane, Kirsten Sonne,

Tina McCleod, Emily Stapleton Jefferis

**GroundWork** Gallery

Open Tuesday-Saturday 11.00-4.00

17 Purfleet Street King's Lynn PE30 1ER Norfolk

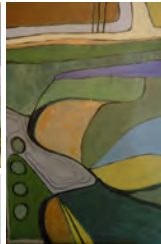
Phone: 01553 602222 E-mail: [mail@groundworkgallery.com](mailto:mail@groundworkgallery.com)

**[groundworkgallery.com](http://groundworkgallery.com)**

**The gallery for art + environment**

# GroundWork

## Harleston & Waveney Art Trail



Harleston and Waveney Art Trail Collective (HWAT) is a group of 36 professional artists, living and working in the wonderful Waveney Valley on the Norfolk/Suffolk border.

Founded in 2004, members open their studios to the public annually as an art trail and mount group exhibitions in the East Anglian region.

Further details, and the Trail booklet, please go to [www.hwat.org.uk](http://www.hwat.org.uk)

## Exhibitions and events

Tuesday 2 May to Sunday 4 June 2017  
Old King's Head, Brockdish IP21 4JY  
**HWAT SPRING SHOW**

24/25 June, 1/2 & 8/9 July 2017  
**ART TRAIL OPEN STUDIOS**

Friday 2 to Wednesday 28 June 2017  
Craftco, Southwold IP18 6AE  
**SEWN-UP SUMMER**  
**Mixed Media Show**

Friday 18 August to Sunday 17 September 2017  
Raveningham Centre, Raveningham, Norfolk NR14 6NU  
**HWAT AT RAVENINGHAM**

Thursday 12 to Wednesday 18 October 2017  
Garage Gallery, Aldeburgh, Suffolk  
**ALDEBURGH AFFORDABLE ART SHOW**



## Waveney Valley Sculpture Trail @ Raveningham



Brian Korteling, *Mirror Cube*

Waveney & Blyth Arts presents its fourth annual Sculpture Trail, curated again by Sarah Cannell, in the fascinating setting of the Raveningham Centre, near Beccles, 12 miles south of Norwich.

The new location will host site-specific work, 3-D constructions and sculpture by more than 30 artists in the grounds of Castell Farm, a Tudor farmhouse with orchard and kitchen gardens, which makes up part of the site.

The Ravenous Cafe will feature an exhibition of paintings, prints, textiles and 3-D work by the Harleston & Waveney Art Trail Collective.



### Friday 18 August to Sunday 3 September 2017

At The Raveningham Centre, Beccles Road, Raveningham,  
Norfolk NR14 6NU

Open every day 10am-5pm

Entry : £5 (£4 members of Waveney & Blyth Arts),  
under 18s free. Paid on entry only

The Trail, which drew over 3,000 visitors to Earsham in 2016, is part of Celebrate the Waveney & Blyth 2017, an annual programme of events highlighting the unique character and creativity of the Norfolk/Suffolk border.



Vanessa Pooley



James Rose,  
*Bee Orchid*



Patrick Elder

Photos by Andrew Atterwill

How to find Raveningham – see  
[www.waveneyandblytharts.com](http://www.waveneyandblytharts.com)  
for directions and access details.



Waveney Valley  
Sculpture Trail

Waveney & Blyth Arts presents

## CELEBRATE THE WAVENEY & BLYTH 2017

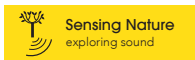
highlighting the unique character and creativity of the Norfolk/Suffolk border from July to September 2017

Friday 30 June & Saturday 1 July  
Thornham Walks, Thornham Magna,  
Eye, Suffolk IP23 8HA

### SENSING NATURE

Exploring the nature of sound and  
sound in nature

Performances: 30 June 5pm, 1 July  
12pm, 2.30pm, 4.30pm



Experience the woods in a new way by focusing on  
sounds - natural, composed and improvised - on this  
'sound trail', created and performed by visually impaired  
amateur and professional vocalists and instrumentalists,  
led by London-based *Tactile Ensemble*. Numbers for each  
performance limited, and blindfolds will be available.

Tickets: Adults £9, Visually Impaired People £7  
(guides free), W&BA Members £8, Under 18s Free  
Order from [bookings@waveneyandblytharts.com](mailto:bookings@waveneyandblytharts.com) or call  
07415 168806

Supported by Arts Council England



From July to September 2017

### ARTS THEMED WALKS

Short walks exploring the countryside and townscapes  
of the area and links with contemporary and past artists,  
writers and other creatives. Full details in the Celebrate  
the Waveney & Blyth brochure, available from May  
onwards from Arts Roundup stands and the website.

Friday 4 to Sunday 6 August 2017

St Peter's Church, Wenham IP19 9EG

### INSPIRED BY BECKER EXHIBITION

Work depicting the land and its inhabitants by  
contemporary artists inspired by East Anglian painter  
Harry Becker. [www.ibbas.co.uk](http://www.ibbas.co.uk)

Friday 1 to Sunday 24 September 2017

Ferini Art Gallery, 27-29 All Saints' Road, Pakefield,  
Lowestoft NR33 0JL

### A MURDER OF CROWS

An exhibition of paintings, prints and sculptures by  
Mark Ward, Ruth Wharrier, Kate Batchelor and other  
Waveney & Blyth Arts members on the theme of crows  
and corvids, plus associated events.

Open 11am-4pm Friday, Saturday, Sunday only  
Free entry







Sarah Cannell Open Studio 10-5pm 27/28/29 May & 3/4/10/11 June  
N&N Open Studios Taster exhibition open daily 10-5pm 27 May to 11 June  
Waveney Valley Sculpture Trail @ Raveningham 18 August to 3 September

## ART AND ANTIQUES AT THE RAVENINGHAM CENTRE

The Raveningham Centre, Beccles Rd, Raveningham, Norwich NR14 6NU

Based in the beautiful South Norfolk countryside M D Cannell Antiques has been trading in rugs, antiques and textiles for over 30 years. Mal Cannell sources beautiful furniture and objects for the home from the UK, France and Belgium and has specialist knowledge in country furniture and Persian rugs and textiles.

Open Wednesday - Sunday 10-4pm or by appointment on 01508 548406.

[www.mdcannellantiques.com](http://www.mdcannellantiques.com)

The Raveningham Centre is 10 miles south of Norwich just off the A146 where you can visit the showrooms and also relax in the Ravenous Cafe which serves delicious homemade tea & cakes.

Picture framer Liz Cannell and landscape painter Sarah Cannell also have their studios at the Raveningham Centre - visit for a complete day of art, antiques, textiles and cake!!

[www.sarahcannell.co.uk](http://www.sarahcannell.co.uk)





## Summer Exhibition Artist Tracey Ross at Pocock's the Artmonger Gallery



*Blossoming Sea Lavender*

*Thornham Sea Air*



### Exhibition

Saturday 22 July to Sunday 6 August 2017  
Pocock's the Artmonger, 6 (was 21) North Street, just off  
the Market Place, Burnham Market, Norfolk PE31 8HG

#### REVELATION

Recent paintings by TRACEY ROSS

Tracey Ross' paintings explore the horizon along the North Norfolk coast, inspired by the colour, textures and light captured in her sketchbooks.

This is Tracey's second solo show at Pocock's the Artmonger. Pocock's the Artmonger stocks fine pictures. The gallery style is eclectic: find a 19th century watercolour or bold contemporary work by a local artist.

Open daily/ Monday-Saturday 10am-5pm, Sunday 12-4pm

**6 July to 6 August 2017**

Tracey has been selected for Cley17 at Cley-next-the-Sea (see page 57) and will be exhibiting as part of the Norwich 20 Group at The Forum and Undercroft – see p13 and 23.

**27/28 May 3/4 10/11 June 2017**

Tracey enjoys welcoming visitors to her studio during Norfolk Open Studios weekends.

[www.tracey-rossart.co.uk](http://www.tracey-rossart.co.uk)  
[info@tracey-rossart.co.uk](mailto:info@tracey-rossart.co.uk)  
[www.theartmonger.co.uk](http://www.theartmonger.co.uk)

## Summer at Salthouse

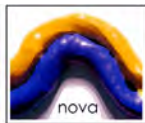


Salthouse Church on the A149 Coast Road, North Norfolk, is a huge, airy, light-filled and austere Grade 1 Listed church, overlooking the sea and the saltmarshes. It is an esteemed venue for innovative contemporary art and each summer, holds exhibitions of invited Norfolk artists.

St Nicholas' Church, Salthouse, North Norfolk, NR25 7XA



Alfie Carpenter



## Exhibitions

Saturday 6 to Sunday 21 May 2017  
**LAND SONG: VISTAS WITH VOICE**

Local artist Alfie Carpenter creates an installation of mixed media landscapes and vocal textures. Collaged materials and papers layered with tones of music and paint form interpretations of Norfolk scenes and sounds through art and song.

Open daily 11am–5pm

Private viewing and hearing with live performances –

Friday 5 May 6–9pm, Saturday 13 May 3–5pm

[www.alfiecarpenter.com](http://www.alfiecarpenter.com)

Saturday 1 July to Monday 24 July 2017

**NOVA AT SALTHOUSE**

[North Norfolk Organisation for Visual Arts]

Open 10.30am–5pm daily, Sunday 11am–5pm

Thursday 3 August to  
Sunday 13 August 2017

**ANNA-LISE HORSLEY PAINTINGS &  
SIRI TAYLOR FILM INSTALLATION**

Open daily 11 am–5 pm.

PV Saturday 5 August 4–7 pm.

[www.anna-lisehorsley.webs.com](http://www.anna-lisehorsley.webs.com)

email: [lisehorsley@gmail.com](mailto:lisehorsley@gmail.com)



Anna-Lise Horsley





# CRAFTING HISTORY

In Great Yarmouth

**TIME AND TIDE MUSEUM**  
**27TH APRIL - 9TH SEPTEMBER**  
**10AM - 4.30PM**

The **CRAFTING HISTORY EXHIBITION** celebrates a two year programme of artist residencies and youth workshops at **TIME AND TIDE** museum inspired by the **HERITAGE CRAFTS** of **GREAT YARMOUTH**.

The project has been funded by Heritage Lottery Young Roots and delivered by Creative Collisions Youth Arts Network.



## Art in Norwich members and venue details

- 1 Anteros Arts Foundation, 7–15 Fye Bridge Street, NR3 1LJ  
Tel: 01603 766129 [www.aterosfoundation.com](http://www.aterosfoundation.com)
- 2 Create Norwich, Old Church Hall, The St, Trowse Newton,  
Norwich NR14 8SX [www.createnorwich.co.uk](http://www.createnorwich.co.uk)
- 3 Crypt Gallery, Norwich School Chapel, The Close, Norwich  
NR1 4DD Tel: 01603 728430 [www.norwich-school.org.uk](http://www.norwich-school.org.uk)
- 4 Dove Street Studios, Dove Street & Barber Shop Gallery,  
Magdalen Street, Norwich [www.dyad-creative.com](http://www.dyad-creative.com)
- 5 East Gallery<sup>NUA</sup>, St Andrew's Street, Norwich NR3 1BB  
Tel: 01603 886385 [www.nua.ac.uk](http://www.nua.ac.uk)
- 6 Fairhurst Gallery, Bedford Street, Norwich NR2 1AG  
Tel: 01603 614214 [www.fairhurstgallery.co.uk](http://www.fairhurstgallery.co.uk)
- 7 The Forum, Millennium Plain, Norwich NR2 1TF  
Tel: 01603 727950 [www.theforumnorwich.co.uk](http://www.theforumnorwich.co.uk)
- 8 The Gallery Norfolk, 60 St Giles Street, Norwich NR2 1LW  
Tel: 01603 761900 [www.thegallerynorfolk.co.uk](http://www.thegallerynorfolk.co.uk)
- 9 Greenhouse Gallery, 42–46 Bethel St, Norwich NR2 1NR  
Tel: 01603 631007 [www.greenhousetrust.co.uk](http://www.greenhousetrust.co.uk)
- 10 Hudson Gallery, 37 St Andrew's St, Norwich NR2 4TP  
Tel: 01603 766220 [www.hudsonarchitect.co.uk](http://www.hudsonarchitect.co.uk)
- 11 Mandell's Gallery, Elm Hill, NR3 1HN  
Tel: 01603 626892 [www.mandellsgallery.co.uk](http://www.mandellsgallery.co.uk)
- 12 Moosey Art, 22 Bridewell Alley, Norwich NR2 1AQ  
Tel: 07792 011541 [www.mooseyart.co.uk](http://www.mooseyart.co.uk)
- 13 Norwich Arts Centre, St Benedicts Street, NR2 4PG  
Tel: 01603 660352 [www.norwichartscentre.co.uk](http://www.norwichartscentre.co.uk)
- 14 Norwich Castle Museum & Art Gallery, Norwich Castle,  
Castle Hill, NR1 3JU Tel: 01603 493625 (Mon–Fri)  
[www.museums.norfolk.gov.uk](http://www.museums.norfolk.gov.uk)
- 15 Norwich Cathedral, The Close, Norwich NR1 4EH  
Tel: 01603 218300 [www.cathedral.org.uk](http://www.cathedral.org.uk)
- 16 Norwich Studio Art Gallery, 77 Upper St Giles St, Norwich  
NR2 1AB Tel: 01603 492093 [www.studioart.org.uk](http://www.studioart.org.uk)
- 17 Nunnsyard, Yallops & Thirteen(a) St Augustine's NR3 3BY  
Email : [tonygeorge@nunnsyard.co.uk](mailto:tonygeorge@nunnsyard.co.uk) [www.nunnsyard.co.uk](http://www.nunnsyard.co.uk)
- 18 Norwich University of the Arts, St George's Building,  
St George's St, NR3 1BB Tel: 01603 610561 [www.nua.ac.uk](http://www.nua.ac.uk)
- 19 Artpocket, Lion House, St George's Works, Muspole Street,  
Norwich [www.artpocket.co.uk](http://www.artpocket.co.uk)
- 20 OUTPOST Gallery, 10b Wensum Street, NR3 1HR  
Tel: 01603 612428 [www.norwichoutpost.org](http://www.norwichoutpost.org)
- 21 Print to the People, 53–55 Pitt St, Norwich, NR3 1DE  
[www.printtothepeople.com](http://www.printtothepeople.com)
- 22 Sainsbury Centre for Visual Arts, University of East Anglia,  
NR4 7TJ Tel: 01603 593199 [www.scva.ac.uk](http://www.scva.ac.uk)
- 23 St Etheldreda's Church, King Street, Norwich  
South Asian Decorative Arts & Crafts Collection Trust,  
The Old Skating Rink Gallery, 34–36 Bethel Street, NR2 1NR  
Tel 01603 663890 [www.sadacc.co.uk](http://www.sadacc.co.uk)
- 25 Targetfollow at Theatre Royal, Theatre Street, NR2 1RL  
[sarah.cannell1@gmail.com](mailto:sarah.cannell1@gmail.com)

## Venues used by members for exhibitions and events

- 26** St Margaret's Church, St Benedict's Street, Norwich  
NR2 4AQ \*Not open all the time
- 27** The Undercroft, beneath Memorial Gardens, Norwich Market  
\*Not open all the time email [clare.hubery@norwich.gov.uk](mailto:clare.hubery@norwich.gov.uk)
- 28** Lion House, St George's Works, Muspole Street, Norwich  
NR3 1DJ Tel: 07946 261651 [www.lionhousenorwich.co.uk](http://www.lionhousenorwich.co.uk)
- 29** Shoe Factory Social Club, St Mary's Works, St Mary's Plain,  
Norwich NR3 3AF [www.shoefactorysocial.club](http://www.shoefactorysocial.club)

## Member organisations without venues

Breckland Artists [www.brecklandartists.com](http://www.brecklandartists.com)  
 Lonely Arts Club [www.thelonelyartsclub.org.uk](http://www.thelonelyartsclub.org.uk)  
 Harleston & Waveney Art Trail [www.hwat.org.uk](http://www.hwat.org.uk)  
 Norfolk & Norwich Festival [www.nnfestival.org.uk](http://www.nnfestival.org.uk)  
 Norfolk Contemporary Art Society [www.n-cas.org.uk](http://www.n-cas.org.uk)  
 Norfolk & Norwich Art Circle [www.nnartcircle.com](http://www.nnartcircle.com)  
 Norwich 20 Group [www.norwich20group.co.uk](http://www.norwich20group.co.uk)  
 Paint Out Norwich [www.paintoutnorwich.org](http://www.paintoutnorwich.org)  
 Waveney & Blyth Arts [www.waveneyandblytharts.com](http://www.waveneyandblytharts.com)  
 Young Norfolk Arts Trust [www.ynaf.org.uk](http://www.ynaf.org.uk)

Art in Norwich is produced and published by Marion Catlin,  
 Culture Shift Norwich email: [info@theshiftnorwich.org.uk](mailto:info@theshiftnorwich.org.uk)  
 Tel 07946 261651 [www.theshiftnorwich.org.uk](http://www.theshiftnorwich.org.uk) E&OE

## Venues around Norfolk see map on page 56

- 30** Cley Contemporary Art, St Margaret's Church, Holt Road,  
Cley-next-the-Sea [www.cleycontemporaryart.org](http://www.cleycontemporaryart.org)
- 31** Felbrigg Hall, Felbrigg, Norwich, Norfolk NR11 8PR
- 32** Grapevine Gallery, Overy Rd, Burnham Market PE31 8HH  
[www.burnhamgrapevine.co.uk](http://www.burnhamgrapevine.co.uk)
- 33** GroundWork Gallery, 17 Purfleet, King's Lynn, Norfolk  
PE30 1ER [www.groundworkgallery.com](http://www.groundworkgallery.com)
- 34** The Gallery Norfolk, 3 Church Street, Cromer NR27 9ER  
[www.thegallerynorfolk.co.uk](http://www.thegallerynorfolk.co.uk) Tel: 01263 515745
- 35** Norfolk Wildlife Trust Cley Marshes Visitor Centre, Coast  
Road, Cley-next-the-Sea, NR25 7SA Tel 01263 740008  
[www.norfolkwildlifetrust.org.uk](http://www.norfolkwildlifetrust.org.uk)
- 36** Pocock's the Artmonger, North St, Burnham Market,  
King's Lynn PE31 8HG [www.theartmonger.co.uk](http://www.theartmonger.co.uk)
- 37** Raveningham Centre, Beccles Rd, Raveningham, near  
Loddon, Norfolk NR14 6NU
- 38** Salthouse Church (St Nicholas') Cross Street, Salthouse,  
Norfolk NR25 7XQ – no website
- 39** Skippings Gallery, 133 King Street, Great Yarmouth,  
Norfolk NR30 8PB email [skippingsgallery@gmail.com](mailto:skippingsgallery@gmail.com)
- 40** Wymondham Arts Centre, 18 Church St, Wymondham  
NR18 0PH [www.wymondhamarts.org](http://www.wymondhamarts.org)
- 41** Mannington Hall, Norfolk [www.manningtongardens.co.uk](http://www.manningtongardens.co.uk)
- 42** Waveney & Blyth Arts, Old Harleston Rd, Bungay  
NR35 2AF [www.waveneyandblytharts.com](http://www.waveneyandblytharts.com)

Art in Norwich partners are:



Great Art for Our Region

SAINSBURY  
CENTRE  
for Visual Arts



HUDSONArchitects



THE GALLERY  
NORFOLK



NORWICH STUDIO  
ART GALLERY

SADACC  
Trust



Norwich Arts  
Centre

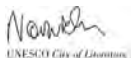


GroundWork

Gallery IN THE LANES



St Etheldreda  
Artist Studios



*'The city of Norwich has many fans, of which I am one. It has a fantastic and historic urban fabric, a glorious rural hinterland and an unparalleled coastline of which I am proud to be able to tell people. I support the football club here and applaud the initiatives which I see taking place all over the city, wrought by the many excellent cultural organisations who work together to ensure an excellent quality of life for the citizens and those who are lucky enough to visit or stay.'*

*Stephen Fry.*

Art in Norwich is published twice a year, Spring and Autumn and is funded by its partners working together to showcase the great art in Norwich and Norfolk all year and every year.

Please help to distribute it. Thank you.

[www.artinnorwich.org.uk](http://www.artinnorwich.org.uk)

**The East Anglia Art Fund is dedicated to enriching cultural life in our region by supporting the best in exhibitions and art education.**

**To find out more and join us please visit  
[www.eastangliaartfund.org.uk](http://www.eastangliaartfund.org.uk)**

**EAST  
ANGLIA  
ART  
FUND**

**Great Art for Our Region**



March to August 2017



# ART IN NORWICH

A round-up of visual art venues, artists, exhibitions and events in Norwich and Norfolk



Norwich, a very fine cultural city  
best explore it!

Art in Norwich is produced by The Shift Norwich  
and Norwich Visual Art Forum

[www.artinnorwich.org.uk](http://www.artinnorwich.org.uk)



Shift Norwich



Art in Norwich