



**FREE  
GUIDE**  
Please  
pick up

Art Fair East : 1 to 3 December 2023 at The Halls, Norwich

Mannington Book Bash : 6 to 8 October 2023 : Mannington Hall, North Norfolk

Contemporary & Country : 9 September to 28 October : St George's Guildhall, King's Lynn

Dozens more exhibitions and events at venues, galleries & studios in Norwich and Norfolk

# ART & CULTURE IN NORWICH & NORFOLK

A directory of arts and culture venues, groups and listings of exhibitions and cultural events in Norwich, Great Yarmouth, King's Lynn, Diss, Cromer and North & South Norfolk

Autumn/Winter 23/24

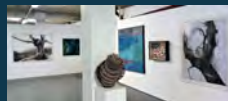
# Exhibitions at a glance : Autumn '23-Winter '24

Please use this calendar as a quick month-by-month reference to forthcoming shows. Darker bands indicate shows which run across more than one month.

Ongoing		page
To 3 September 2023	Raveningham Sculpture Trail : Raveningham Centre	17
To 6 September 2023	Summer Show : Bircham Gallery, Holt, North Norfolk	18
To 9 September 2023	Richard Sawdon Smith : East Gallery, Norwich	last edition
To 10 September 2023	The Last Voyage of The Gloucester, Norwich Castle	last edition
To September 2023	Lumen : Norwich Castle	last edition
To November 2023	Hoards : Lynn Museum, King's Lynn	last edition
To 17 Sept 2023	Julian Stair : Sainsbury Centre, Norwich	last edition
To 29 October 2023	Sean Scully : Houghton Hall, West Norfolk	last edition
To end October 2023	East to East : Houghton Hall, North Norfolk	last edition
To October 2023	Edible East : Unthank Artspace : Unthank Road, Norwich	last edition
To October 2023	Hungate Church : Princes' Street, Norwich	last edition
To 7 October 2023	Bare Bones : Time & Tide Museum, Great Yarmouth	50

AUGUST 2023		page
10-21 August	Post Petrochemical Practice : Cromer Art Space, Cromer, N. Norfolk	19
11-21 August	Naked in Norwich : Norwich20Group : Undercroft Gallery, Norwich	54
To 26 August	Divergent Perspectives, Peter Hurn : Anteros Arts, Norwich	15
19 Aug-16 September	Malca Schotten : Mandell's Gallery, Elm Hill, Norwich	26
24-28 August	Look Out : Cromer Art Space, Cromer, North Norfolk	19
24 Aug-1 October	OUTPOST Members' Show : OUTPOST Gallery, Tombland, Norwich	37
25 Aug-1 September	NNAC Exhibition : South Creak, North Norfolk	29
31 Aug-11 September	Vanity Monsters : Cromer Art Space, Cromer, North Norfolk	19

SEPTEMBER 2023		page
2-30 September	The Ground Beneath our Feet : GroundWork Gallery, King's Lynn	25
9 Sept-28 October	Contemporary & Country : Heads & Tails : Fermoy Gallery & Shakespeare Barn, St George's Guildhall, King Street, King's Lynn	11
9 Sept-4 October	Bircham Gallery : Melvyn Evans   Louise McNiff : Holt, North Norfolk	18
9/10 September	Heritage Open Days : St Etheldreda's Church, Norwich	48
10 Sept-14 January	The Stuff of Life   The Life of Stuff : Sainsbury Centre, UEA, Norwich	45
12-23 September	Anteros Arts : Barnaby Wills, Rebecca Elliott : Norwich	15



Cover image:  
Norwich 20 Group  
annual exhibition

Note from the editor:

## Welcome to Art in Norwich, Norfolk and beyond

The summer is disappearing fast this year, with typically variable weather – hopefully it will brighten up for the autumn months.

And hopefully some of the exhibitions and events listed here will help to get you out and about and enjoying the talent of the region.

New for this season is the Norfolk Autumn Festival, previously known as the Hostray Festival but now using a wider range of venues, hence the rebrand. They also run the Norfolk Arts Awards which recognise the talents and achievements of many people who work away in the background making great things happen. The Festival runs through the autumn months and the Norfolk Arts Awards are at the Ocean Rooms in Gorleston on Saturday 3 November with an Ocean 11 themed Bonanafana Night following the awards ceremony – more on page 12.

Also new is the Mannington Book Bash at Mannington Hall in October run in association with the Book Hive, bringing some amazing names to Norfolk see page 27.

**SEPTEMBER 2023 continued****page**

13–19 September	HWAT Late Summer Show : Woodbridge, Suffolk	last edition
14–25 September	Esther Boehm : Cromer Artspace : Cromer, North Norfolk	19
16 Sept–1 October	In Plain Sight : Norwich 20 Group, Salthouse Church, N. Norfolk	31
16 Sept–15 October	Countless Edens Mark Edwards : PrimeYarc, Great Yarmouth	39
17 Sept–25 November	Autumn Festival of Norwich : different venues	13
23 Sept–21 October	Mandell's Gallery : Derrick Greaves : Elm Hill, Norwich	26
23 September	NNAC : Demo of Watercolour Painting : Cringleford, Norwich	29
23 Sept–25 November	Royal Drawing School Autumn Term : Lion House, Norwich	43
23 Sept to 8 October	Barrington Farm Open Studios, daily 10am–5pm	
26 Sept–7 October	Anteros Arts : Norfolk Open Studios, Rachel Collier-Wilson : Norwich	15
27 Sept–8 October	Rest & Digest : PrimeYarc, Great Yarmouth, East Norfolk	39
29 September	Barrington Farm Harvest Festival, 2–5pm	
30 September	Barrington Farm Harvest Festival, 12–4pm	
30 Sept–18 October	Cromer Artspace : Open Call 'Colour' : Cromer, North Norfolk	19
30 Sept–31 March '24	Mark Wilsher: Norwich Castle, Castle Meadow, Norwich	33
30 Sept/1 October	Norfolk Open Studios weekend 1 : St Etheldredas, King Street	48

**OCTOBER 2023****page**

4–29 October	Bayfield Hall Sculpture Trail : Bayfield Hall, North Norfolk	17
6–8 October	Mannington Book Bash : Mannington Hall, North Norfolk	27
7 Oct–1 November	Bircham Gallery : H.J. Jackson : Printmaking : Holt, North Norfolk	18
7/8 October	Norfolk Open Studios Weekend 2 : St Etheldredas, King Street	48
10–21 October	Anteros Arts : Between the Earth and the Sky by Simon Boyd	15
14 Oct–17 December	GroundWork Gallery : Plant Power : King's Lynn, West Norfolk	25
14 October	Free Public Workshop : Outpost Gallery, Tombland, Norwich	37
15 Oct–30 March	Sediment Spirit: Sainsbury Centre, UEA, Norwich	45
21–29 October	Cromer Artspace : Material Process : Cromer, North Norfolk	19
21–29 October	Cromer Artspace : Hanse Experiments (Part II) : Cromer, N. Norfolk	19
21 Oct–14 April 2024	Norwich Castle : Industrial Photography of the Nurnbergs	32
21 Oct–17 December	Out of the Blue : PrimeYarc, Great Yarmouth, East Norfolk	39
21 Oct–5 November	GYROS 25th Anniversary Exhibition : PrimeYarc, Great Yarmouth	39
21 Oct–2 December	The Corn Hall : Hincks & Hincks : Diss, South Norfolk	41
24 Oct to 4 November	Anteros Arts : Cameron Lennox, Hannah Ayres : Norwich	15
24 Oct–18 November	Mandell's Gallery : Garry Raymond-Pereira : Elm Hill, Norwich	26

In King's Lynn, Contemporary & Country have an exhibition at the Fermoyn Gallery and Shakespeare Barn in St George's Guildhall complex, and GroundWork Gallery starts a new exhibition, Plant Power, from 14 October.

Cromer ArtSpace on the Esplanade at Cromer, has a number of exhibitions and Bircham Gallery is a well-established selling gallery on the High Street in Holt – see page 19.

Nearby, Bayfield Hall has the 3rd year of its sculpture trail set in its natural surroundings and the Alfred Cohen Museum has opened at the School House Gallery at Wighton.

In Norwich, the Greenhouse Gallery in Bethel Street is working on a project, 7000+, designed to continue and develop the Ecological Art/Action traditions of Joseph Beuys, planting oak trees locally – page 22.

Mandell's Gallery exhibits a wide range of artists, both locally-based and from further afield including new work by artist Malca Schotten starting in August – page 26.

Paffron & Scott, who have a permanent shop selling antiques and artefacts in Melton Constable, also have a pop-up shop in the Fairhurst Gallery in Bedford Street, Norwich

Art Fair East is the premier selling exhibition in the east of England and draws contributors and visitors from around the country. It takes place in The Halls from 1–3 December 2023.

OUTPOST, an artist-led gallery exhibits the work of new and emerging artists who explore different media and approaches, many from their studios in Gildengate – page 37.

# Exhibitions at a glance : Autumn '23–Winter '24

Darker bands indicate shows which run across more than one month.

## OCTOBER 2023 cont

page

26 Oct–3 December	Amelia Frances Wood : Outpost Gallery, Tombland, Norwich	37
28 Oct–25 November	Mandell's Gallery : Emrys Parry : Elm Hill, Norwich	26
28 October	NNAC demo : Oils, Expressionism & Van Gogh : Cringleford, Norwich	29

## NOVEMBER 2023

page

3 November	Norfolk Arts Awards : Ocean Room, Gorleston-on-Sea	12
4 to 29 November	Bircham Gallery : Christmas Exhibition Part I : Holt, North Norfolk	18
4 November	Group show : St Etheldredas, King Street, Norwich	48
7–18 November	Anteros Arts : Feral by Daisy Black, Women & Water by Helen Vine	15
21 Nov–2 December	Anteros Arts : TOPstitch, Juju Vail : Fye Bridge Street, Norwich	15
22–26 November	Emerge : Undercroft Gallery, Back of the Market, Norwich	54
24 Nov–3 December	Paffron & Scott Pop Up Shop : Fairhurst Gallery, Norwich	9
25 November	NNAC : Easel Party : The Scout Hut, Lodge Lane, Norwich	29

## DECEMBER 2023

page

1 to 3 December	Art Fair East : The Halls, At Andrew's Plain, Norwich	16
2 Dec–6 January 2024	Bircham Gallery : Christmas Exhibition Part II : Holt, North Norfolk	18
3 December	Winter Warmer : St Etheldredas, King Street, Norwich	48
8 Dec–6 January 2024	Will Teather : The Corn Hall, St Nicholas Street, Diss, South Norfolk	41
9 December	OUTPOST Christmas Party Fundraiser : Outpost Gallery, Tombland	37

## JANUARY 2024

page

13 Jan–7 February	Bircham Gallery : Printmakers : Holt, North Norfolk	18
15 Jan–23 March	Royal Drawing School Spring Term : Lion House, Muspole Street	43
25 Jan–8 February	OUTPOST Graduate scheme show : Outpost Gallery, Tombland	37
27 January 2024	NNAC : Talk about paintings : Cringleford, Norwich	29

## FEBRUARY 2024

page

3 February 2024	Jeanne Gagniere : St Etheldredas, King Street, Norwich	48
24 February 2024	NNAC : Mark Purlant talk : Cringleford, Norwich	29

## MARCH 2024

page

2 March 2024	Paul Meade solo show : St Etheldredas, King Street, Norwich	48
--------------	---	----

Fire & Flux offer ceramics sessions and workspace as well as selling artists' work in their gallery shop in Pottergate, Norwich.

Studio Art Gallery in Upper St Giles specialises in art and ceramics Eastern Europe run by artist Gennadiy Ivanov who has recently painted a huge climate change mural installed in the City Hall Council Chamber, relating to work he has been doing with the Climate Research Unit at UEA and in Canada.

Norfolk Contemporary Art Society (ncas) has a programme of talks and visits covering a range of topics to stimulate knowledge and discussion as well as their popular art auction.

The Sainsbury Centre has launched a new Universal Ticket which offers access to all galleries and exhibitions on a pay-what-you-can basis which makes it accessible to all. They are launching the first of its new 'Big Question' seasons, Planet for our Future: How do we adapt to a Transforming World?

Norfolk Museums are hosting exhibitions around the county with the most notable being the exhibition Norwich Works: The Industrial Photography of Walter and Rita Nurnberg at Norwich Castle.

Norwich & Norfolk Art Circle and Norwich 20 Group both run life drawing workshops and exhibitions see pages 29 and 54.

And Barrington Farm are hosting a Harvest Festival, as part of Norfolk Open Studios and the Autumn Festival of Norfolk see page 54.

## Membership organisations to join

A number of organisations have memberships to support the development and promotion of visual art in the county and to enable access to events.

Here is a spotlight on some of them to encourage you to join and support them. The information is necessarily brief, you can read more about their priorities and activities on their websites.

### **EAST ANGLIA ART FUND** – see page 63

Cost £35 per year single, £55 joint membership

**Benefits:** Private views, discount and free admission to Norwich Castle, special events, and visits, a newsletter to keep you up to speed.

**Supports:** Working with Norwich Castle on exhibitions, purchases of important artworks, artist projects and exhibitions, grants, education, scholarships and a small team to organise all of this.

See <https://www.eastangliaartfund.org.uk> for more info



### **NORFOLK CONTEMPORARY ART SOCIETY – ncas** – see page 30

Cost £20 per year single, £30 joint membership. Free for students

**Benefits:** Free admission and discount at Norwich Castle, special events, and visits, talks, member meetings.

**Supports:** Regular exhibitions, championing contemporary art and artists in the region, helping Norwich Castle to purchase contemporary works for the county.

See <https://www.n-cas.org.uk> for more info



### **NORFOLK & NORWICH ART CIRCLE – NNAC** – see page 29

Cost £25 per year per person

**Benefits:** Inclusive opportunity to exhibit, free admission to talks and demos, activities for artists of any genre

**Supports:** Development of professional and amateur artists in Norfolk.

See <https://www.nnartcircle.com> for more info



This edition also includes 'spotlight' pages – spare pages which, as editor, I have chosen to use as editorial to profile some of the curators and organisers of art and cultural activities in Norwich and Norfolk.

Future editions will include more as there are many people working behind the scenes who deserve recognition

To take you around the county, we have included summaries of arts and culture on offer in Cromer, Diss, Great Yarmouth and King's Lynn as these towns are very much part of the growing Norfolk arts scene. There is extra information about these places on the Art in Norwich website [www.artinnorwich.org.uk](http://www.artinnorwich.org.uk)

To help find your way around the booklet, Norfolk events are signified by a green side tab, grey for Norwich events.

### **Artist studio and exhibition space crisis**

In spite of all the great activity listed here there is currently a looming crisis with artist studios and exhibition space in Norwich. Recent loss of the Hostry as an exhibition space has left a dearth of affordable venues for larger and longer term exhibitions. A group, MAC, has formed to try and find a useable space for the city.

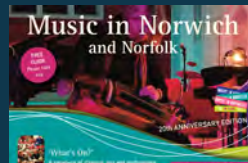
In addition, there is a crisis of studio space as artists at OUTPOST studios in Gildengate House have been given notice to move pending demolition for redevelopment. The Norwich Unity Hub is coordinating more than 20 groups looking for a new home.

**Art in Norwich by post:** You can order copies to be sent to you for the price of the postage – see page 8 or [www.artinnorwich.org.uk](http://www.artinnorwich.org.uk) for details and please get copies for your friends and neighbours when you can.

## INDEX OF PAGES

At a Glance calendar.....	2-5	Norwich Print Fair.....	34
Index of pages.....	6	Norwich Studio Art Gallery.....	35
About Art in Norwich.....	7	Oak Circus Centre.....	36
Art in Norwich by post.....	8	OUTPOST.....	37
Paffron & Scott Pop Up.....	9	originalprojects;.....	38
Spotlight on the Pauls.....	10	PRIMEYARC.....	39
Contemporary & Country.....	11	Spotlight on Kaavous and Julia.....	40
Norfolk Arts Awards.....	12	The Corn Hall, Diss.....	41
Autumn Festival.....	13	Royal Drawing School.....	42/43
Alfred Cohen Museum.....	14	Sainsbury Centre.....	44/45/46
Anteros Arts Foundation.....	15	Spotlight on Jago Cooper.....	47
Art Fair East.....	16	St Etheldreda's Artist Studios.....	48
Bayfield Hall Sculpture Trail.....	17	Stranger's Hall Museum.....	49
Bircham Gallery, Holt.....	18	Time & Tide, Great Yarmouth.....	50
Cromer Art Space.....	19	Arts & Culture in Great Yarmouth.....	51/52
Crypt Gallery, Norwich.....	20	National Centre for Writing, Norwich.....	53
Fire & Flux Ceramics.....	21	Barrington Farm.....	54
Greenhouse Gallery.....	22	Emerge at the Undercroft.....	55
Arts in King's Lynn and West Norfolk.....	23	Arts Roundup.....	56
Spotlight on Veronica Sekules.....	24	Quick guide to Art in Norwich.....	57
GroundWork Gallery, King's Lynn.....	25	Map of Norwich venues.....	58
Mandell's Gallery.....	26	Art in Norwich members.....	59
Mannington Book Bash.....	27	Contact details and venues.....	60
Museum of Norwich at The Bridewell.....	28	Map of Norfolk venues.....	61
N&N Art Circle.....	29	Partner logos.....	62
Norfolk Contemporary Art Society.....	30	Join EAAF.....	63
Norwich 20 Group.....	31	Back cover.....	64
Norwich Castle Museum & Art Gallery.....	32/33	Extra pages in pdf version not printed	

*This booklet is printed by Barnwells of Aylsham using Carbon Balanced Paper and plant-based ink. Using paper from farmed sources means that more trees are planted which is good for the planet.*



Art in Norwich/Norfolk is produced by Culture Shift Norwich as a companion to **Music in Norwich/Norfolk**, a roundup of concerts and music events in Norwich and beyond which you can download on [www.musicinnorwich.org.uk](http://www.musicinnorwich.org.uk) or pick up a printed copy around the city. The next edition of MiN is due April 2023. Information about Culture Shift can be found at [www.theshiftnorwich.org.uk](http://www.theshiftnorwich.org.uk) where you can also find an overview of Norwich culture and other useful information.

You can sign up for email updates via Culture Shift on the website.

*Errors and omissions excepted. Info is checked as well as possible but is subject to mistakes and change and cannot be guaranteed. Please check before travelling.*

*If you require copies to display or are interested in being included in the next edition of either publication, please email [info@theshiftnorwich.org.uk](mailto:info@theshiftnorwich.org.uk)*

## About Art in Norwich

This programme is a collaboration of a number of organisations who promote visual art, public art, craft, heritage and literature in and around Norwich.

The reach extends into the wider county of Norfolk, highlighting the thriving arts and cultural scene.

The aim is to gather visual art listings in one place so that they are easy to find and to offer an overview of art activity and infrastructure in city and county throughout the year. There is an emphasis on visual art but wider cultural events are also included where appropriate. Behind Art in Norwich is a self-supporting partnership of art groups and cultural organisations.

We hope you will keep this booklet safe as it covers six months' programming. Because of space limitations and lots going on, exhibition and event details are brief but you can find out more from individual organisations and venues from their own websites. See pages at the back of the booklet for maps, contact and venue details.

Please also visit our website at [www.artinnorwich.org.uk](http://www.artinnorwich.org.uk) where you can download a pdf of this booklet.

*Important: All information is subject to change - please check with individual organisations before travelling to an event.*

*Image: Mary Mattingly, Blockades, Boulders and Weights 2013.*

*Photographic print courtesy of Mary Mattingly*



## SAINSBURY CENTRE **The Stuff of Life | The Life of Stuff**

In this major international exhibition, visitors will meet artworks composed of salvaged materials, re-synthesised fragments, and e-waste.

10 September 2023 –  
14 January 2024

[www.sainsburycentre.ac.uk](http://www.sainsburycentre.ac.uk)

## Art and Culture in Norwich & Norfolk, Covid and the economic downturn

*Clearly everyone has been affected by Covid over recent years, and now there are all the challenges of the economic downturn, with money for exhibitions and venues in short supply. Many groups are finding it hard to plan ahead in the way they are used to doing. The routine of publishing Art in Norwich & Norfolk is back to its regular spring/autumn schedule thankfully and available at many venues and from the Arts Roundup racks in The Forum, City College, Norwich Bus station and many other venues around the city and some in the county too. St Peter Mancroft and Norwich Cathedral in Norwich also have reliable supplies.*

*In true creative spirit, organisations and artists are powering through the challenges and making new events happen. The continuing demand for Art in Norwich and Norfolk has been truly heart-warming. Inevitably there is still some uncertainty in programming so please use this booklet as a directory and check with venues and organisations by visiting their websites and social media.*

*But don't let it stop you going out, venues and organisers need your support.*

*You can find web addresses on every page and a directory at the back of the booklet.*



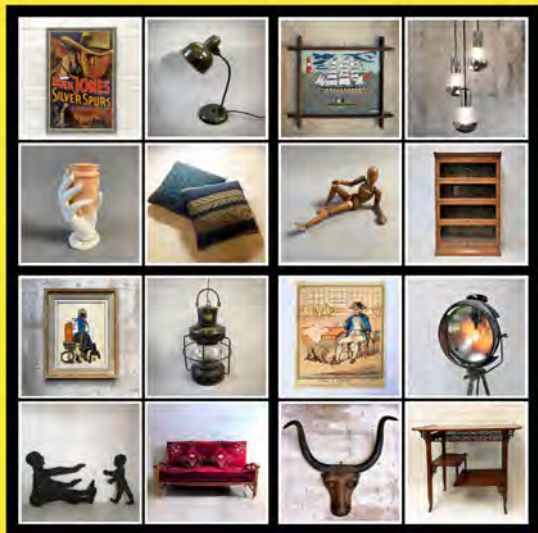
# ART IN NORWICH & NORFOLK BY POST

We have all had to adapt to the constraints of Covid and picking up printed material is harder than usual – some venues have closed and with fuel and other price rises we are just going out less – making active choices more important.

To make that easier, Art and Music in Norwich/Norfolk are now available by post – pay the postage and get your very own copy delivered to your door.

Go to [www.artinnorwich.org.uk/AiNbypost](http://www.artinnorwich.org.uk/AiNbypost) or email [info@theshiftnorwich.org.uk](mailto:info@theshiftnorwich.org.uk) find out what to do to get your copy for the price of a stamp.





# paffron & scott

Antiques, Art & Other Interesting Stuff

Find us at other times in Melton Constable, North Norfolk

[www.paffronandscott.co.uk](http://www.paffronandscott.co.uk)



## POP UP SHOP

FRI 24 NOV - SUN 3 DEC

10am - 5pm

(Thurs 30th Nov 10am - 7pm)

### Fairhurst Gallery

17 Bedford Street, Norwich, NR2 1AR

A thoroughly modern antique shop,  
grounded in classic English style.

Objects from all periods and parts of the  
world, from 18th century mahogany  
furniture to 1970s lighting or Victorian  
country pottery to mid-century art.

#### Jill Smith - Knitted Gansey Cushions

The pop up will also include an exhibition  
of knitted work by Jill Smith, who  
lives on the Isle of Lewis and uses the local  
Harris Tweed wool and patterns of fishermen's  
gansey sweaters to make unique cushions.

## Spotlight on....



*Known collectively as The Pauls aka Contemporary and Country, they are hosts, artists, curators and designers*

### PAUL BARRATT AND PAUL VATER

Paul and Paul are a partnership of multi-talented creatives, curating exhibitions showcasing the work of artists, designers and craftspeople from across the Eastern region of England to an ever-expanding audience both regionally, nationally and overseas, Paul Barratt and Paul Vater are both well-known and well-loved across Norfolk.

Frequently found accompanying the major annual sculpture exhibitions at Houghton Hall with an exhibition in The Stables, they also keep an eye out for interesting pop-up locations wherever they can be found – the Granary furniture shop in Norwich, Creak Abbey in North Norfolk, St George's Guildhall in King's Lynn and BallroomArts in Aldeburgh, Suffolk.



*The Stables at Houghton Hall*



*Installing at Creak Abbey, near Burnham Market*

As Contemporary and Country, they champion artists and makers who work with natural materials and celebrate the rural counties of Norfolk, Suffolk, Essex, Cambridgeshire and Lincolnshire in a contemporary and eco-sensitive way, sourcing sustainable materials and exploring issues around coastal land use and ecological concerns found in the east of England. Many of these issues are also shared by creative practitioners working in rural communities in other parts of the UK. Their exhibitions and events provide a forum for these issues, bringing attention to the creative people they work with, facilitating greater understanding of their work and production process.

The pair live in the market town of Aylsham where they also run a boutique B&B called Tinsmiths House, in a former industrial workshop, a beautiful place to stay when visiting the region and its cultural highlights.

CONTEMPORARY  
AND COUNTRY

# heads & tails

PICTURING PEOPLE AND OTHER ANIMALS

09 SEPT - 28 OCT, 2023

**FREE ENTRY**

11AM - 4PM THURS, FRI & SAT

THE FERMOY GALLERY  
& SHAKESPEARE BARN

ST GEORGE'S GUILDHALL

29 KING STREET, KING'S LYNN, PE30 1HA

KATAYOUN DOWLATSHAHI  
ROGER HARDY  
JOHN KIKI  
RACHAEL LONG  
EMILY MAYER  
JESSICA PERRY  
ROSIE PHILLIPS  
LOUISE RICHARDSON  
COLIN SELF  
NESSIE STONEBRIDGE



Funded by:

Borough Council of  
King's Lynn &  
West Norfolk



HM Government

Partners:



Norfolk  
County Council



Norfolk  
Museums  
Service

Supported by:

Alive  
West Norfolk

In collaboration with:



National Trust

## Spotlight on the Norfolk Arts Awards



Norfolk Arts Awards was started by Stash Kirkbride and Peter Beck as a way of celebrating and recognising the amazing talents and achievements of individuals and organisations in Norfolk. It is produced by the The Autumn Festival of Norfolk (previously the Hostry Festival) which now takes place in multiple venues.

The Norfolk Arts Awards has rapidly become the event of the year with people eagerly looking out to see which of their friends and colleagues are on the list, or maybe even wondering if they would get the tap on the shoulder themselves.

It starts with nominations and public voting which narrows down to two finalists in each category. The award ceremony itself is a glitzy event with full celebration style, complete with fizz and truffles from Booja Booja and presented by ITV's Chris Page and Aisling Creevy.

### NORFOLK ARTS AWARDS 2023

The Norfolk Arts Awards Ceremony will take place on Friday 3 November 6pm-8.30pm at Ocean Room in Gorleston-on-Sea. Tickets £25

Nominations for the 2024 awards will open in January 2024.

# NORFOLK ARTS AWARDS

In association with the  
**Eastern Daily Press**

### THE VISUAL ART AWARD



Art in Norwich & Norfolk is proud to be supporting this year's Visual Arts Award.

The 2023 finalists are:

GroundWork Gallery, King's Lynn – a gallery dedicated to art and the environment curated by Veronica Sekules  
Will Corvidae Sparling, a tattooist from Norwich

At the ceremony the winner will be announced and presented with an award.

You can see a full list of categories and finalists on the Norfolk Arts Awards website.

Best of luck to all the finalists, and the great people who work their socks off this year and every year to make so much great work happen across Norfolk.

[www.norfolkartsawards.org](http://www.norfolkartsawards.org)



Stash Kirkbride & Peter Barrow present a PBSK Partnership project

**UEA**  
University of East Anglia

# The AUTUMN FESTIVAL of Norfolk

IN PARTNERSHIP WITH UEA

THEATRE • MUSIC • VOICE • DANCE • VISUAL ARTS • SPOKEN WORD • NEW COMMISSIONS

**17TH SEPTEMBER  
TO 25TH NOVEMBER  
2023**

**pbsk**  
PARTNERSHIP  
Creating Projects in Norfolk



[www.autumnfestivalofnorfolk.org](http://www.autumnfestivalofnorfolk.org)



**BOX OFFICE**

At: **N** Norwich  
Theatre

Call 01603 598 676 or visit  
[www.autumnfestivalofnorfolk.org](http://www.autumnfestivalofnorfolk.org)

Festival  
website



Image by Bradley Buxton

**NORWICH**  
CATHEDRAL



**BOOJA-BOOJA**

**CAISTOR HALL**



**OFFTHEWALL  
OUTDOOR**

**PSC  
LIVE**

MEDIA PARTNERS  
**Eastern Daily Press**  
**RADIO Norfolk**

**Norfolk**

# Alfred Cohen Museum and School House Gallery, Wighton, North Norfolk



*The Alfred Cohen Museum, photo copyright Katherine Mager*

This new museum opened in 2023 in the beautiful studios of the American artist who settled in Norfolk. It houses over 70 stunning works painted from the 1950s to the 1990s in Paris, London, and Kent as well as Norfolk.

Cohen's work is in over 50 public collections including the Sainsbury Centre, Norwich Castle Museum and Art Gallery, Government Art Collection, Arts Council Collection, British Council, and Pallant House.

**The School House, Wighton, Near Wells-next-the-Sea,  
Norfolk NR23 1AL. Tel. 01328 820457**

The museum is next door to the School House Gallery, which celebrates its fortieth year as a leading modern art gallery in Norfolk.

It has exhibited Norman Ackroyd, David Hockney, Liz Humphries, David Jones, John Kiki, Leslie Marr, Henry Moore, Mary Newcomb, Tessa Newcomb, Sula Rubens, Ivy Smith, Derrick Greaves and Brüer Tidman.



*The School House Gallery, photo copyright Katherine Mager*

**Museum and Gallery open 11.30am–5.30pm;  
closed on Mondays [www.alfredcohen.org](http://www.alfredcohen.org)**

# Anteros Arts Foundation



The Anteros Arts Foundation is a charity for the education and promotion of arts in East Anglia. We are proud to host an exciting and diverse programme of exhibitions throughout the year, celebrating both local and national artists.

Our exhibitions are free to enter and most are accompanied by events, enabling visitors to meet the artists and engage more fully in the artwork. Our well-stocked shop sells a huge variety of items, all designed and created by local artists and makers.

We also host a variety of art classes, music and performance events. We are fortunate to be housed in a characterful Tudor building which provides the perfect backdrop for our busy calendar!

## Exhibitions

Tuesday 15 to Saturday 26 August 2023

**DIVERGENT PERSPECTIVES** by Peter Hurn

Tuesday 12 to Saturday 23 September 2023

**SUBMERGENCE** by Barnaby Wills

**CRACKED** by Rebecca Elliott

Tuesday 26 September to Saturday 7 October 2023

**ARTISTS @ANTEROS – Norfolk Open Studios Exhibition**

**SUGGESTED NARRATIVE** by Rachel Collier-Wilson

Tuesday 10 to Saturday 21 October 2023

**BETWEEN THE EARTH AND THE SKY** by Simon Boyd

Tuesday 24 October to Saturday 4 November 2023

**FIRST STEP INTO A LARGER WORLD** by Cameron Lennox

**PENDING** by Hannah Ayres

Tuesday 7 to Saturday 18 November 2023

**FERAL** by Daisy Black

**WOMEN & WATER** by Helen Vine

Tuesday 21 November to Saturday 2 December 2023

**CONNECTIONS** by TOPstitch

**FLOAT AND TANGLE** by Juju Vail

Visit the Anteros website for exhibitions after Christmas

[www.anterosfoundation.com](http://www.anterosfoundation.com)

# Art Fair East, Norwich



Art Fair East aims to showcase national and international artists, galleries and dealers to an Eastern Region audience of art lovers and collectors. The 2023 fair takes place in the spectacular setting of St Andrews Hall, at the heart of Norwich city centre, one of the largest exhibitions of our kind outside London, with hundreds of artworks by international and regional talent.

A wealth of artists, dealers and experts will be on hand to help visitors to build a superb collection of visual art from the UK and overseas. From affordable prints by recognised artists and new talent through to serious investments, gallery specialists will be available to advise on collecting contemporary art including original paintings, prints, sculpture, photography and artworks made to commission.

Friday 1 to Sunday 3 December 2023  
St Andrews Hall, The Halls,  
St Andrews Plain, Norwich NR3 1AU

## ART FAIR EAST 2023

### Opening times

Thursday 30 November 6pm to 9pm

VIP Private View

Friday 1 December 10.30am to 5.30pm

FAIR OPEN TO PUBLIC

Saturday 2 December 10.30am to 6pm

FAIR OPEN TO PUBLIC

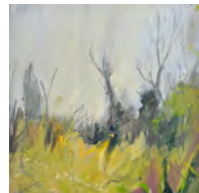
Sunday 3 December 10.30am to 5pm

FAIR OPEN TO PUBLIC

Tickets £5 or £3.50 concessions,  
under 16s free



*Rembrandt Revisited, Will Teather*



**"The foremost  
place to see  
and buy top  
quality  
contemporary  
art in the east  
of England."**

**Eastern Daily Press**

[www.artfaireast.com](http://www.artfaireast.com)

Art Fair East, Norwich



# Bayfield Hall Sculpture Trail



An uplifting, inspiring natural space for people to experience contemporary art in a beautiful rural setting in North Norfolk. The second Bayfield Hall Sculpture Trail features 40 artists, sculptors, musicians and makers in the beautiful gardens and grounds of Bayfield Hall near Holt. The trail is curated by Sarah Cannell and Fiona Roberts with kind permission to use the private gardens and 11th century chapel by Caroline and Roger Combe.

Bayfield Hall, Letheringsett with Glandford,  
North Norfolk, NR25 7JN, 3 miles west of Holt

*Creative Odyssey CIC Projects – Arts project in nature to inspire and soothe the soul.*

Wednesday 4 October to  
Sunday 29 October 2023  
Open Wednesday–Sunday  
10am–5pm

## BAYFIELD HALL SCULPTURE TRAIL 2023

Visitors to the site will be able to walk through 3 acres of grounds, woodland and wild gardens to view the work of over 40 artists from across the UK. The circular trail ends in the fabulous Old Stables Decorative Antiques and Interiors shops with a pop up gallery featuring works by artists from the trail. Some works on the trail are available for sale or artists can be commissioned.

Visitors can also visit the Natural Surroundings Wildflower Cafe with its beautiful plant nursery.

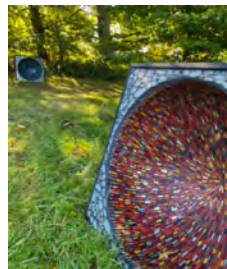
Tickets £7 adults, under 18s free.

Book online at [www.bayfieldhallsculpture.com](http://www.bayfieldhallsculpture.com)

Bayfield Sculpture Trail is curated and produced by the team that annually creates the Raveningham Sculpture Trail at Raveningham, near Loddon, south Norfolk.  
Instagram @bayfieldhallsculpture



*The chapel*



*Mosaic Sound*

# Bircham Gallery, Holt



*The Gallery, Holt*



*H.J.  
Jackson*

Light and spacious gallery situated on the Market Place in the Georgian town of Holt in north Norfolk.

The gallery stocks the work of over 200 artists and craftspeople, displaying a superb collection of unique and beautiful art from East Anglia and beyond.

Our innovative exhibition programme includes the work of established contemporary artists, acclaimed modern masters and emerging new talent.

14 Market Place, Holt, Norfolk NR25 6BW

Admission free, open 9am-5pm Monday-Saturday  
10am-4pm Bank Holidays

Tel: 01263 713312 Email: [info@birchamgallery.co.uk](mailto:info@birchamgallery.co.uk)

## Exhibitions



*Louise McNiff*



*Melvyn Evans*

**Saturday 9 September to Wednesday 4 October 2023**

**MELVYN EVANS | LOUISE MCNIFF**

Paintings & prints with stoneware ceramics

**Saturday 7 October to Wednesday 1 November 2023**

**H.J. JACKSON: 70 YEARS OF PRINTMAKING**

Prints from a wonderful career of linocutting and book launch

**Saturday 4 November to Wednesday 29 November 2023**

**CHRISTMAS EXHIBITION PART I**

Paintings, prints, jewellery, ceramics, glass, sculpture

**Saturday 2 December '23 to Wednesday 6 January 2024**

**CHRISTMAS EXHIBITION PART II**

The second collection of work by gallery artists for Christmas

**Saturday 13 January to Wednesday 7 February 2024**

**PRINTMAKERS EXHIBITION**

Show of works in print from selected artists

## Cromer Artspace : Art in public spaces



Cromer Artspace aims to engage and inspire residents and visitors with art in public spaces.

We continue to develop the Pictures Around Town project. Full-size reproductions of works from the National Gallery collection will be in place on walls around the town until September 2023.

Cromer Artspace runs Artspace on the Prom with a varied and exciting exhibition programme. Exhibitions are open 11am to 4pm daily.

We aim to bring new work to Cromer and to help the arts to become valued as a vital part of local life.

To keep up to date with Artspace projects and a full programme of events visit [cromer-artspace.uk](http://cromer-artspace.uk)

## Artspace On The Prom exhibitions 2023

Thursday 10 to Monday 21 August 2023

### POST PETROCHEMICAL PRACTICE

An exhibition by artists from East Anglia & the East Midlands: Sam Hodge, from East London, Yelena Popova from Nottingham, Geoff Litherland from Derbyshire and Liz MacGowan from Norfolk Practitioners who work with foraged earth pigments and materials seeking to avoid the consumption of ready made art materials most of which are products of the petrochemical industry.

Thursday 24 to Monday 28 August 2023

### LOOK OUT Ruth Butler

Thursday 31 August to Monday 11 September 2023

### VANITY MONSTERS Craig Visser

Thursday 14 September to Monday 25 September 2023

### FROM THE ETHEREAL TO THE CONCRETE Esther Boehm

Saturday 30 September to Wednesday 18 October 2023

### CROMER ARTSPACE OPEN CALL 'COLOUR'

Last date for submissions 25 August

Saturday 21 October to Sunday 29 October 2023

**MATERIAL PROCESS** Hannelore Smith, Francesca Cant, Kaitlin Ferguson

Saturday 21 October to Sunday 29 October 2023

### HANSE EXPERIMENTS (PART II)





NORWICH SCHOOL

The Crypt Gallery at Norwich School is located in the crypt space below the School Chapel, within the historic Cathedral Close.

A non-commercial gallery for the benefit of the Norwich community celebrating local and national artists across a range of different disciplines.

## Coming Up

### Natural Lines 2023

11 – 20 September

Six North Norfolk artists present an exhibition of ceramics, sculpture, textiles and paintings.

For details of this and other upcoming exhibitions, visit  
**[www.cryptgallery.space](http://www.cryptgallery.space)**





### **The Gallery:**

We are an independent Ceramics Gallery established in 2016 specialising in modern and contemporary studio ceramics, working exclusively with British based artists, and occupies the ground floor of this lovely grade 2 listed building.

### **Our Pottery Studios are on the First floors:**

We have fully equipped pottery studios, with work stations available to rent on a daily or half daily basis, for potters able to work independently and are booked on a rolling 4 weekly basis.

### **Pottery Lessons:**

We offer pottery tuition for beginners as well as advanced tuition on most aspects of ceramics. Evening classes are also regularly available.

**Contact:** Fire and Flux Ceramics, 21 Lower Goat Lane, Norwich NR21EL

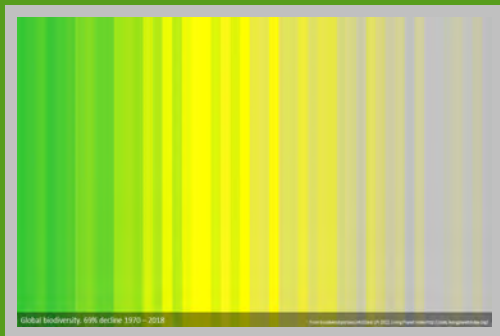
E: [fireandfluxceramics@gmail.com](mailto:fireandfluxceramics@gmail.com) T: 01603 322796 [www.fireandfluxceramic.com](http://www.fireandfluxceramic.com) Ins: [fireandfluxceramics](https://www.instagram.com/fireandfluxceramics)

# GREENHOUSE - GALLERY

**OPENING TIMES AND WORKSHOP DETAILS @**



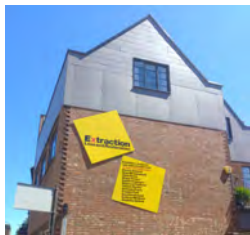
**[www.Greenhousetrust.net](http://www.Greenhousetrust.net)**



**7000<sup>+</sup>**

**42 - 46 Bethel St. Norwich NR2 1NR**

## Art in King's Lynn & West Norfolk



GroundWork Gallery



*Projections by Collusion on the Customs House, now the home of Greyfriars Art Space*



*11<sup>th</sup> hour festival at St Nicholas' Chapel*

Arts and culture has been established in King's Lynn since the 1950s. In 2021, the King's Lynn Festival celebrated 70 years of an annual programme of music, theatre and art in the town which continues in 2023. As well as traditional favourites such as Festival Too, the annual literature (in March) and poetry (September) festivals, the Shakespeare and Hansa Festivals and the Mart, there have been more recent cultural developments in the town.

GroundWork Gallery in Purfleet (see page 25) specialises in art which addresses environmental issues and includes exhibitions, talks and workshops and a meeting place for creative people. West Norfolk Artists' Association has over 70 members of active artists exhibiting regularly in various venues including St Nicholas' Chapel and Fermoy Gallery.

Greyfriars Art Space has moved into the Customs House opposite GroundWork Gallery in Purfleet.

Arts and tech company Collusion are now based in the White Barn, part of the Guildhall complex and run projects to develop visual and interactive content for the network of outdoor projectors that were installed in the town as part of an EU-funded project some years ago.

St George's Guildhall in King Street has received Towns Deal funding to enable a complete overhaul and renovation of this historic arts space and theatre, one of the oldest in the country and where William Shakespeare himself is said to have performed. It will be an arts complex, performance space and creative hub including the Fermoy Gallery and Shakespeare Barn where Contemporary and Country have an exhibition from 9 September to 28 October 2023.



## Spotlight on....



*Veronica Sekules is director of GroundWork Gallery in King's Lynn, and a writer, art historian, curator, educator, artisan.*

### VERONICA SEKULES

Founder and director of GroundWork Gallery in King's Lynn, West Norfolk is not only all of the above but is also a life-long activist for the environment. After a long career in both art history and environmentalism, with 30 years at the Sainsbury Centre of Visual Art, and 18 as head of education and research, Veronica took the bold step of setting up GroundWork Gallery, a private venture. It is one of the handful of contemporary art galleries solely dedicated to art and the environment, and to building the cultural reputation of King's Lynn. Since 2016, Veronica has curated and hosted at least three exhibitions a year, each with a very strong theme addressing a key environmental issue and including seminars and artist events alongside.



*Veronica with Colette Parker Anglian Water and Wells Harbourmaster Robert Smith*



*A gallery exhibition with Richard Long's work River Ouse Mud in the background and hand-blown glass bottles by Stewart Hearn in the foreground*

In 2024 she will be concentrating on a year of residencies, exhibitions and projects with linked by an overall theme. Veronica's unique approach means that she takes each theme both deeper and wider, using and choosing art that helps to reveal and expose environmental issues of the day in a way that feels genuinely enlightening and not like being preached to. Exhibitions and creative programmes explore how art can enable us to respond to the changing environment and imagine how we can shape its future. Recent exhibitions have covered *Water*, *Extraction* and most recently *Waste*. Veronica shows the work of contemporary artists who care about how we see the world, bringing them from Europe as well as involving artists based locally in Norfolk to the beautifully designed contemporary gallery space by the river Ouse in King's Lynn.



# PlantPower

**Intense images of how plant and  
human lives are interconnected**

Look online for events and updates

**[www.groundworkgallery.com](http://www.groundworkgallery.com)**

Twitter@groundworkk1

Instagramgroundworkgallery

**14 October-17 December**

**GroundWork** Gallery+Shop

Open during exhibitions only

Wednesday-Saturday 11.00-4.00

17 Purfleet Street, King's Lynn, Norfolk PE30 1ER

Phone: 01553 340714

Email: [mail@groundworkgallery.com](mailto:mail@groundworkgallery.com)

**The gallery for art+environment**

# GroundWork

# Mandell's Gallery

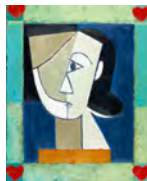


Mandell's Gallery is one of Norwich and Norfolk's most respected commercial art galleries. Mandell's Gallery was founded in 1965. Originally specialising in 19th century Norwich School painters, the gallery has expanded greatly and now has a diverse collection of traditional and contemporary art, offering opportunities for many new and local artists as well as more established names. You are welcome to view the collection at the art gallery, situated on the beautiful and historic street of Elm Hill, near Norwich Cathedral.

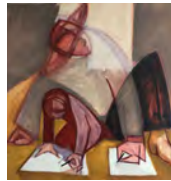
The gallery is open Tuesday–Saturday 10am–5pm

Monday - by appointment

[www.mandellsgallery.co.uk](http://www.mandellsgallery.co.uk) Tel: 01603 626892



*Emrys Parry*



*Malca Schotten*

## Exhibitions

19 August to 16 September 2023

### **MALCA SCHOTTEN : PICTURES FROM AN EXHIBITION**

Schotten has spent months in multiple exhibitions, at the Sainsbury Centre in her role as a gallery invigilator. Her new work is inspired by her time observing.

23 September to 21 October 2023

### **DERRICK GREAVES**

Derrick Greaves 1927–2022 : An exhibition to celebrate Derrick's life, looking at his work through the decades.

24 October to 18 November 2023

### **GARRY RAYMOND-PEREIRA**

A collection of works by landscape painter Garry Raymond-Pereira on display in the reception room of Mandell's Gallery.

28 October to 25 November 2023

### **EMRYS PARRY EXHIBITION AND BOOK LAUNCH**

A retrospective exhibition by Welsh artist Emrys Parry to celebrate the launch of his new book about his life and work.

# Mannington Book Bash



## MANNINGTON Book Bash!

A LITERARY FESTIVAL

6-8 October 2023



LOUIS  
DE  
BERNIÈRES

DAVID  
OLWSOGA

ADAM  
BUXTON

JOHN  
CRACE

SIMON  
ARMITAGE

LENN  
SISSAY

DOON  
MACKICHAN

EMILY  
WILSON

MARK  
COCKER

DR ANNIE  
GRAY

AK  
BLAKEMORE

PATRICK  
BARKHAM

GRACE  
DENT

NATALIE  
HAYNES

The literary event of the year with a fantastic lineup of writers and poets, run by the Book Hive which has excellent bookshops in both Norwich and Aylsham.

The Book Bash is at Mannington Hall and has:

Big names. Beautiful surroundings. And a moat.

A weekend of rollicking events with old friends, local heroes and world-class writers in fantastic surroundings.

All served with top-notch food and drink from a variety of the best local food trucks, producers, chefs and the excellent Mannington Tearoom set in the stunning gardens of the medieval Mannington Hall. Plus deals galore, with many books for sale at exclusive festival prices!

Tickets are available for the whole weekend (£140) for a single day Saturday or Sunday (£60) or per event (£14)

Mannington Hall, near Itteringham, Norfolk NR11 7BB  
[www.manningtonbookbash.co.uk](http://www.manningtonbookbash.co.uk)

## Museum of Norwich at the Bridewell



Nestled in the Norwich Lanes, the Bridewell has been a merchant's house, a house of correction, a tobacco warehouse and a shoe factory. Now, the Museum of Norwich tells the stories of the people who helped to create our modern city, from domestic, commercial and industrial, with many fascinating displays inside and, outside, one of the finest examples of a knapped flint wall in the city!

Museum of Norwich at the Bridewell, Bridewell Alley,  
Norwich Norfolk NR2 1AQ  
[www.museums.norfolk.gov.uk/museum-of-norwich](http://www.museums.norfolk.gov.uk/museum-of-norwich)



*Reconstructed pharmacy at the Museum of Norwich*

### KETT'S REBELLION VR EXPERIENCE

Grab a headset and be transported back to August 1549, when Norwich was gripped by rebel forces, fighting to the death against the King's army. Witness first-hand how events unfolded, feel part of the action during hand-to-hand combat in Elm Hill and experience the decisive Battle of Dussindale.

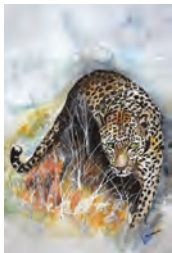
**The VR is free to use, ask at reception**

*In partnership with the Wym Trails App and South Norfolk Council*

### MUSEUM OF NORWICH SHOP

With a range of books, work from local makers including Mandy Doubt and Salt Glass Studio, plus small toys and souvenirs, the shop is a great place for gifts, treats and reminders of your visit.

## Norfolk & Norwich Art Circle



Far left:  
Maureen  
Houseman,  
*Stealth*



Left:  
Carole Massey,  
*Somalian Girl*

The Norfolk and Norwich Art Circle welcomes members of the visual arts from a wide variety of genres and experience. It offers regular events including social gatherings, demonstrations and workshops by professionals and a regular life drawing class. It also holds two major exhibitions of members work each year. All members are able to submit their work for selection.

If you draw, paint, sculpt, or are interested in art, NNAC welcomes you to join us.

Membership £25 per annum

Membership forms can be found on the website.

For information and contacts see <https://www.nnartcircle.com>

Instagram: #norfolkandnorwichartcircle

Facebook: Norfolk and Norwich Art Circle

### Forthcoming exhibitions

Friday 25 August to Friday 1 September 2023

#### **NORFOLK & NORWICH ART CIRCLE EXHIBITION**

South Creake Memorial Pavilion, The Green, South Creake, near Fakenham NR21 9PD

### Art demonstrations and talks

Members free, non-members £5.

Saturday 23 September 2023, 2.30pm to 5pm

The Willow Centre, Cringleford, Norwich, NR4 7JJ

#### **IAN McMANUS : Watercolour Painting**

Saturday 28 October 2023, 3pm to 6pm

The Willow Centre, Cringleford, Norwich, NR4 7JJL

#### **BRYONY KNIGHT : Oils – Expressionism and Van Gogh**

Saturday 25 November 2023, 2.30pm to 5pm

The Scout Hall, Lodge Lane, Norwich NR6 7HL

#### **EASEL PARTY**

Saturday 27 January 2024, 2.30pm to 5pm

The Willow Centre, Cringleford, Norwich, NR4 7JJL

#### **RICHARD MOTLEY : Talk about paintings by former NNAC members**

Saturday 24 February 2024, 2.30pm to 5pm

The Willow Centre, Cringleford, Norwich, NR47JJL

#### **MARK PURLANT : Demo/talk about his creative approach**

*Non-members are welcome to attend demonstrations and workshops for a small fee to take part and to meet NNAC members and tutors.*



*Far left:  
John Kiki  
private view*



*Left: Members  
at the ncas  
AGM*

Norfolk Contemporary Art Society ncas is a charity promoting contemporary visual art and artists working across the region, supporting the art of today and the artists and curators of tomorrow.

ncas has acquired its own collection of paintings and sculpture which forms the basis of holdings of post-war art in the Norwich Castle Museum & Art Gallery. The Society also raises funds for public art and sculptures, and mounts a lively programme of monthly events, mostly in Norwich, including lectures by national and regional artists, critics and art historians, studio and gallery visits, auctions, private views and members' parties.

Please check [www.n-cas.org.uk](http://www.n-cas.org.uk) for details of talks and events and updates of events listed

So far this year we have hosted talks including a conversation between Rana Begum RA and Will Gompertz, as part of the Norfolk & Norwich Festival, had days out at the Henry Moore Foundation Studios & Gardens in Much Hadham and visited the *Big Women* exhibition at Firstsite in Colchester.

ncas also organised an art auction in Norwich City Hall and enjoyed the annual summer AGM in the grounds of Norwich Cathedral.

We have some exciting events planned for later this year and into 2024, including talks by Cornelia Parker RA and Mali Morris RA.

So if you're not a member yet, why not join? – details on the website [www.n-cas.org.uk](http://www.n-cas.org.uk)



*Big Women at Firstsite*



*Rana Begum*



# Norwich 20 Group



*Norwich 20 Group Annual exhibition in the Undercroft Gallery*

The Norwich 20 Group has a firmly established regional art presence with active involvement by its selected members, including exhibitions, monthly open meetings and weekly life drawing workshops plus talks by invited artists, licentiate members and recent graduates from NUA.

Over almost 80 years, membership has grown to more than 80 artists including painters, sculptors, installation and conceptual artists, printmakers and photographers.

Open meetings are at Park Lane Chapel, Norwich on first Tuesday of the month from 7.30pm. Check website for details, free to attend, all welcome.

For more information see [www.norwich20group.co.uk](http://www.norwich20group.co.uk) and follow on Instagram @norwich20group

## Exhibitions

Saturday 16 September to  
Sunday 1 October

Salthouse Church, Salthouse,  
North Norfolk NR25 7XA

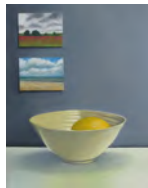
### IN PLAIN SIGHT

*With private view from 3pm  
on Saturday 16 September*

Our third group show  
of the year, in the  
beautiful St. Nicholas  
Church at Salthouse,  
on the North Norfolk  
coast.



*Yusuf Keten,  
Gravity*



*Joceline Wickham, Lemon  
and Two Landscapes*



*Mary Spicer,  
Ever-changing cliffs*

## WEEKLY LIFE DRAWING WORKSHOP

Autumn term: Thursday 14 September–Thursday 7  
December 2023 (no session in half term 26 October)

Venue: The Scout Hut, next to St Anne's Church, Colman  
Road, Norwich NR4 7HD at junction with The Avenues

Open to all, drop-in session £5 (pay cash) 7–9.15pm.

Students welcome. Arrive from 6.45pm to set up – please  
note that the space doesn't have equipment, so anything  
needed, boards, art materials etc., should be brought.

Please check website for any changes and updates.

# Norwich Castle Museum & Art Gallery



Built by the Normans as a Royal Palace 900 years ago, Norwich Castle is currently undergoing a £15m transformation with major support from the National Lottery Heritage Fund, to restore the keep to its original grandeur.

Whilst the Medieval Keep is closed, the museum and art galleries remain open with an exciting temporary exhibition programme alongside permanent fine art displays, natural history and extensive decorative arts collections.

Norwich Castle Museum & Art Gallery,  
24 Castle Meadow, Norwich NR1 3JU England  
[www.museums.norfolk.gov.uk/norwich-castle](http://www.museums.norfolk.gov.uk/norwich-castle)

## Exhibitions and special displays

For a full list of exhibitions at Norwich Castle visit  
[www.museums.norfolk.gov.uk/norwich-castle](http://www.museums.norfolk.gov.uk/norwich-castle)

Saturday 21 October 2023 to Sunday 14 April 2024

### NORWICH WORKS : THE INDUSTRIAL PHOTOGRAPHY OF WALTER AND RITA NURNBERG

Walter Nurnberg was already a celebrated photographer in 1948 when he embarked on a 13-year project to document Norwich's major industries. Together with his wife, Rita, they brought the aesthetic of the Bauhaus and the dramatic lighting of Expressionist cinema to bear on the factory environment.

Over 130 original photographs depicting shoemaking, steel construction, woodworking and sweet-making are on display, alongside objects from the museum's collections relating to city's industrial past, as well as newly digitised archive film.

*The exhibition is a partnership between Norfolk Museums Service, The University of East Anglia, Norfolk Record Office and the East Anglian Film Archive.*



*Walter & Rita Nurnberg  
Drilling pilot holes, Wood-working,  
Boulton & Paul, Riverside Works,  
Norwich, Gelatin silver print,  
1947-8 © Norfolk Record Office*





Image © the artist

## Saturday 30 September to Sunday 31 March 2024 MARK WILSHER : FIVE PAINTINGS

The conceptual artist Mark Wilsher presents *Five Paintings*, a project woven throughout the historic painting collections of Norwich Castle. He has worked closely with the curatorial, technical and conservation teams over the last year to realise this new work. A small publication accompanies the project and is available at Norwich Castle.



John Sell Cotman,  
*The Eel Boat*  
© Norfolk Museums Service

Monday 3 April 2023 to early 2024

## WHERE LAND AND WATER MEET: NORFOLK'S RIVERS, STREAMS, BROOKS AND BROADS

Norfolk's extensive network of rivers, streams and broads have been an inspiration to generations of artists. This exhibition presents a selection of exquisite drawings and watercolours by John Sell Cotman, Henry Bright, John Thirtle and Catherine Maud Nichols among others, which capture the many different moods of the county's waterways.

Visit all 10 of Norfolk's museums for free with a great value annual Norfolk Museums Pass, including Gressenhall Farm & Workhouse, Ancient House Thetford, Norwich Castle, Strangers' Hall (p49), Museum of Norwich (p28), Lynn Museum, Cromer Museum, Time & Tide (p50), the Tolhouse Museum and Elizabethan House Museum in Great Yarmouth

For details of the Pass, admission prices and visitor info visit [www.museums.norfolk.gov.uk](http://www.museums.norfolk.gov.uk)

Tickets for exhibitions can be booked in advance from [norfolk-museums.arttickets.org.uk](http://norfolk-museums.arttickets.org.uk)

# Norwich Print Fair



*St Margaret's Church,  
St Benedict's Street,  
Norwich*

The Norwich Print Fair will be back!

Norwich Print Fair was the first Print Fair in the UK and was the brain-child of renowned mezzotint artist Martin Mitchell whose vision was always to champion traditional and contemporary printmaking techniques and to educate and involve the wider public. Each year we hold Open Portfolio and Demonstration days where the public can talk to the artists about their work and watch as prints come hot off the presses! Normally there are around 30 printmakers displaying framed and unframed work for sale as well as greetings cards and other work.

As our venue has been unavailable, we have postponed the Print Fair pending completion of the renovations.

Coming eventually!

## THE 25th NORWICH PRINT FAIR

The Gallery at St Margaret's, St Benedict's Street,  
Norwich, NR2 4TU.



*David Jones. Sailors' Reading Room,  
Southwold. (Linocut).*



*Martin Mitchell. Winter Copse.  
(Mezzotint).*

St Margaret's Church in St Benedict's, the building normally used for the Norwich Print Fair, is undergoing necessary and extensive renovation. There have been inevitable delays which means we are unsure when we will be able to welcome visitors back into the glorious medieval Church of St Margaret's for our 25th annual celebration of contemporary printmaking.

As soon as the work is completed and when we have a date we will let people know through our website and social media. We are looking forward to it!

Website: [norwichprintfair.co.uk](http://norwichprintfair.co.uk) Insta/fb [norwichprintfair](https://www.instagram.com/norwichprintfair)

## Norwich Studio : Gennadiy Ivanov



Norwich Studio Art Gallery, Upper St Giles, Norwich

Norwich Studio Art Gallery has been a part of the Norfolk art scene for over 18 years. Housed in a seventeenth century former butcher's shop this small gallery is a colourful part of local life in Upper St Giles.

The gallery specialises in modern and contemporary fine art with a focus on Eastern European arts and crafts.

The Studio Art Gallery is open 10 am to 5pm Wednesday to Saturday. If you are making a special journey please phone in advance to check.



Climate change mural unveiled at Norwich City Hall in historic year for Climatic Research Unit

To find out more about the mural, see all of the paintings and details about the climate research work at UEA either scan the QR code below or visit <https://crudata.uea.ac.uk/cru/climate-mural/>



Artist and curator Gennadiy Ivanov works prolifically from his studio in Upper St Giles and at Outpost Studios.

In the last few years Gennadiy has been absorbed in a major environmental project, *Transitions*, with Trevor Davies, former Pro Vice Chancellor for Research and Director of the Climatic Research Unit at UEA and Professor John Pomeroy at Saskatchewan University. They have been working together to represent aspects of climate change and its impacts to increase awareness in a wider section of people.

Taking four years to complete, Gennadiy has painted huge mural entitled *Climate Mural For Our Times*, a 10m x 1.5m set of canvasses, unveiled in the Council Chamber at City Hall for the 50th anniversary year of the UEA's Climatic Research Unit.

77 Upper St Giles Street, Norwich NR2 1AB

Tel: 01603 492093 email: [info@studioart.org.uk](mailto:info@studioart.org.uk)

# Oak Circus Centre, Norwich



*St Michael Coslany church*



The Oak Circus Centre is located in Oak Street, in the north of the city in a mediaeval flint church, St Michael Coslany. It is a fully equipped circus training centre and a venue for performance which can also be hired for events, birthday parties, weddings, film and TV and classes.

Classes are delivered by international tutors from Europe and beyond and from the professional companies and experienced performers from across the world that the Oak hosts in their spaces. The Oak run classes tailored for all ages and abilities – you're never too old to run away with the circus!

Circus has many benefits both mental and physical. From improving core strength, balance, motivation and discipline to social interaction, trust and teamwork. Come and try it!

We have a new cafe open Thursday to Sunday where you can work, enjoy the building and enjoy fast wifi provided.

St Michael Coslany Church, Oak Street, Norwich NR3 3AE

Email : [Info@theoakcircuscentre.org](mailto:Info@theoakcircuscentre.org)

## OUR TRAINING AND CLASSES

**Our Youth Programme:** From 3 to 16 years, youth classes run Mondays, Wednesday, Saturdays, and a SEND specific program on Sundays.

**Our Adult classes :** Monday–Thursday evenings on rolling 4 week blocks all year round in Trapeze, Aerial Hoop, Silks and Rope, Aerial Yoga, Acro Yoga, Handstands & Acrobatics, Hula Hoops, Aerial Fitness, and our new Bungee fitness course.

**Personal Training and one-to-one sessions** available with a wide range of disciplines and approaches.

## OUTREACH

**Providing circus training** as modules for students at schools and Universities in the region

**One-off circus taster sessions** for community events and festivals – indoors and outdoors.

**Funded projects** working with community groups, arts organisations or charities.

## PRE-PROFESSIONAL & PROFESSIONALS

**Our Circus Academy Norfolk:** Year-long programme supporting young people from ages 8–18 who want to take circus training more seriously, including support for those who want to pursue circus as a career.

**One-to-one training** for professionals that want to improve their techniques.

**For a full list of our events and in-house shows have a look at our website [www.oakcircuscentre.org](http://www.oakcircuscentre.org)**

# OUTPOST



OUTPOST is an artist-run charity, based in Norwich, committed to the uncompromising presentation of contemporary art. Founded in 2004, the charity runs a gallery which currently hosts a programme of five exhibitions per year, alongside a series of offsite projects, events, and artists' editions.

OUTPOST also runs an affordable studio complex at Gildengate House for over 80 artists and practitioners. OUTPOST has established itself as one of the largest studio providers for artistic activity in the east of England.

**OUTPOST Gallery, 10b Unsum Street, Tombland, Norwich, Norfolk NR3 1HR Tel: 01603 612428**  
open thursdays to sundays, 12-6pm during exhibitions

The charity runs two artistic programmes; The OUTPOST Core Programme supports upcoming and emerging artists, students, and OUTPOST Members. The OUTPOST Creative Programme, which is part funded by Arts Council England, focuses solely on supporting individuals from working class/ lower socio-economic backgrounds.

OUTPOST operates a membership scheme which is open to anyone to join and offers an annual members exhibition, residencies, and other member only opportunities. The charity has also supported the professional development of more than 50 individuals through its volunteer Steering Committee, providing hands-on training and experience of running a contemporary art space and studios.

## **At OUTPOST Gallery, Tombland, Norwich NR3 1HR**

**Thursday 24 August to Sunday 1 October 2023**  
opening party Thursday 24 August 6-9pm

**OUTPOST MEMBERS' SHOW selected by Hannah Wallis**  
**Saturday 14 October 2023**  
**FREE PUBLIC WORKSHOP**

An invitation to imagine the future through Black History  
by Miranda Wamuyu Mungai

**Thursday 26 October to Sunday 3 December 2023**  
opening party Thursday 26 October 6-9pm

**SOLO SHOW: AMELIA FRANCES WOOD**

**Saturday 9 December 2023**

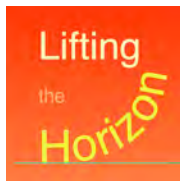
**OUTPOST CHRISTMAS PARTY FUNDRAISER**

**Thursday 25 January to Sunday 8 February 2024**  
**OUTPOST GRADUATE SCHEME SHOW**

## originalprojects; Great Yarmouth



What are the potentials of culture?  
Socially, environmentally,  
economically



originalprojects; are currently working on Lifting the Horizon – an innovative 18-month Arts Council funded project delivering creative consultation, collaborative programme design, skills development and capacity building, and embedding their work in a national network of peers in priority places. This work includes a programme of artists' talks and associated events – please follow their website and social media for updates.

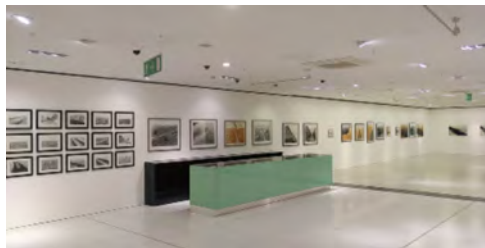
Visit [www.originalprojects.co.uk](http://www.originalprojects.co.uk) for further details and to book a place.

*Lifting the Horizon is delivered in collaboration with University of East Anglia, Creative UEA, The Civic University and Norwich University of the Arts and supported using public funding by the National Lottery through Arts Council England*



originalprojects; is a charitable incorporated organisation (CIO) number:1181297

## PRIMEYARC, Great Yarmouth



originalprojects; is an artist-led organisation based in Great Yarmouth, engaging with communities, industries and heritage to uncover, support, create and promote cultural experience, assets and enterprise in the town.

PRIMEYARC is a space managed by originalprojects; for diverse creative communal collaborations. It presents an evolving public programme of exhibitions and events, alongside studio and workshop space for artists and makers, and a place for creative production to happen in a former department store in Great Yarmouth.

PRIMEYARC, former Debenhams, Market Gates Shopping Centre, Great Yarmouth NR30 2BG

## Exhibitions at PRIMEYARC

open Wednesdays, Fridays, Saturdays, Sundays, 12–4pm

**Saturday 16 September to Sunday 15 October 2023**

### **COUNTLESS EDENS** Mark Edwards

*Countless Edens* is a body of work – made over the course of three years – in the house and garden of the writer Ronald Blythe. Both house and garden were formally the house of Blythe's close friend, the painter John Nash. Comprising of seventeen colour photographs, including eight interiors, *Countless Eden's* draws upon the rich English landscape traditions of both literature and painting.

**Wednesday 27 September to Sunday 8 October 2023**

### **REST & DIGEST**

Bill Vine, Charlie Ditcham, Gabby de Matteis, Jean Hogg, Lørna Cally, Sue Parr

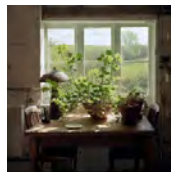
A presentation of Claire Atherton's Arts Council funded project *Rest & Digest* – a 7-month programme piloting a framework of professional development and wellness support for creative and cultural practitioners who live/work in Great Yarmouth.

**Saturday 21 October to Sunday 17 December 2023**

### **OUT OF THE BLUE: LANDSCAPES OF CHRONIC ILLNESS**

Joanna Holland

Joanna Holland's first solo exhibition shares her lived experience of chronic illness. It brings together photographs, video, soundscapes and text from different bodies of work created over the last three years.



**Saturday 21 October to Sunday 5 November 2023**

### **GYROS 25th ANNIVERSARY EXHIBITION**

GYROS (Great Yarmouth Refugee Outreach & Support) was formed in 1998 to support the refugees and asylum seekers who came to Great Yarmouth during and after the Balkans war. Over the years, their organisation has evolved to meet the changing needs of our local population, supporting migrants and culturally and linguistically diverse (CALD) communities in the East of England, including those who have come here for work, family reasons or fleeing persecution or dangerous situations in their country of origin. They have been using PrimeYarc weekly for the last 3 years, and this exhibition celebrates their 25th anniversary of working in Great Yarmouth.

### **GREAT YARMOUTH CONTEMPORARY ART, CRAFT & DESIGN FAIR**

Alongside the exhibition programme, original projects; has a display of art, craft and design made by people working in and around Great Yarmouth including books, clothes, ceramics, and much more.



## Spotlight on....



*Kaavous Clayton and Julia Devonshire are originalprojects; artists, activists, curators and cultural producers working in Great Yarmouth*

### ORIGINALPROJECTS: KAAVOUS CLAYTON AND JULIA DEVONSHIRE

Kaavous is an artist-curator. He has worked as a gallery and project curator for public and cross-county projects in the eastern region. He has been involved in the development of community-focused initiatives that provide space for locals to share thinking, test ideas and exchange knowledge, leading to stronger and more vibrant communities that are more resilient, independent and better able to support themselves in the delivery of ambitious home-grown projects.

Julia is a cultural producer. She has worked in contemporary art, heritage and cultural development roles across East Anglia's public sector, academic and artist-led settings. Her place-based practice supports grassroots, culture-led regeneration activity and



Ryan Gander at Merrivale Model Village



Yarmonics at The Empire



Bill Drummond 'Who Ate My Uncle' at PrimeYarc, a former Debenhams store

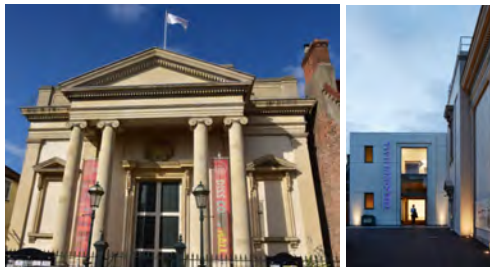
enterprise, and seeks to broker innovative linkages between ideas, people and initiatives, whilst championing and supporting the development of local talent.

Since 2016, they have been working with communities and artists in Great Yarmouth, and have developed a distinctive approach to explore relationships between generosity, creativity and place. Their projects unlock creative opportunities for people to learn new skills, build confidence and thrive through experiencing sustainable and pioneering great art.

They are well-connected with artist communities across the country and bring exciting new work to the town, such as Jimmy Cauty's dystopian world shipping container at the (Dis)Pleasure Beach and YARMONICS, an annual festival of sound and new music, alongside exhibitions, talks and events at various venues including PrimeYarc, a base in a former Debenhams store in the heart of the town centre shopping area (see page 38). They also offer affordable and accessible studio space to artists and community groups.



# The Corn Hall, Diss, South Norfolk



The Corn Hall is a vibrant venue on the high street, of the historic market town of Diss on the border of Norfolk and Suffolk and at the gateway to the Waveney Valley. It a refurbished and impressive Grade II listed building which was originally built in the 19th century as a corn exchange. Nowadays it offers a full range of quality arts entertainment, with two galleries showing international, regional and local art as well as film, theatre, music, talks and much more. The Corn Hall has an ambitious exhibition programme with recent shows including Lucian Freud, Maggi Hambling and Paula Rego as well as exhibitions by emerging and local artists.

The Corn Hall, St Nicholas Street, Diss. Norfolk IP22 4LB  
Box office Tel 01379 652241

## Exhibitions

To Saturday 26 August 2023

### JOHN KIKI : PAINTINGS

Saturday 2 September to Saturday 14 October 2023

### DESIGNER MAKERS : A CELEBRATION OF TEXTILES

In collaboration with designermakers21, the exhibition will feature a selection of textile artists who utilise the surface of textiles to showcase their practice.

Saturday 7 October 2023

### TEXTILES IN ACTION DAY

Come and join us to try your hand at a range of surface processes and watch the artists at work.

Saturday 21 October to Saturday 2 December 2023

### JO HINCKS AND GARY HINCKS : ART ROOMS

An eclectic exhibition that incorporates large hanging canvases, invented tableaux, assemblages, small printed editions and even painted sentences.

Friday 8 December 2023 to Saturday 6 January 2024

### WILL TEATHER : MAGIC REALISM

This exhibition brings together a cross section of the artist's diverse output including playful compositions based upon pantomime performers at the Corn Hall. Will Teather's work has been exhibited internationally to great acclaim and is widely collected.

Free entry to exhibitions. For further information and opening times please contact [galler@thecornhall.co.uk](mailto:galler@thecornhall.co.uk)

## Royal Drawing School



The Royal Drawing School is an independent, not-for-profit resource that aims to raise the standard and profile of drawing through teaching and practise. It is one of only a few institutions in the world offering in-depth, quality tuition in drawing from observation.

The Young Artists Programme for 10-18 year olds offers a unique opportunity to students who want to develop their drawing skills through sustained tuition in a supportive environment. Our courses are open to all levels of experience, and are a chance to meet and learn with other young people in a creative community. The programme is taught by professional artists who are alumni of our postgraduate programme, The Drawing Year, and experienced in teaching children.

Regular drawing at any age can enhance focus and concentration and increase self-esteem, and this can be especially beneficial for school-age children. The Young Artists Programme helps children develop their drawing abilities and sustain their enthusiasm for self-expression within an artist-led environment.

Founded in 2000 by HRH The Prince of Wales and artist Catherine Goodman as The Prince's Drawing School, it became the Royal Drawing School in 2014.

Courses for all ages are running both in the studio and online, in London and Norwich or more information and to book online, visit [www.royaldrawingschool.org/courses/public-courses/](http://www.royaldrawingschool.org/courses/public-courses/) or phone 020 7613 8559

## Saturday Young Artists Programme Lion House, St George's Works, Muspole Street, Norwich NR3 1DJ

The Royal Drawing School offers weekly sessions in 10-week terms in St George's Works studios. Students will spend time drawing from the model, still lifes and sets in the studio or from the streets, buildings and green spaces in the historic town centre with reference to art history and contemporary artist practice. Covid-safe practice will be implemented across the studio.

Autumn term 23 September to 25 November 2023  
Spring Term 15 January to 23 March 2024

### Drawing Club (10–14 year olds) 11am–1pm

<https://www.royaldrawingschool.org/courses/public-courses/drawing-club-norwich-aged-10-14/>

### Young Associates (15–18 year olds) 2–4pm

<https://www.royaldrawingschool.org/courses/public-courses/young-associates-norwich-aged-15-18/>

£165 for 10 sessions

*Means-tested scholarships are available.*

All  
levels  
welcome

For more information on courses in Norwich see  
[www.royaldrawingschool.org/courses/young-artists/  
regional-courses](https://www.royaldrawingschool.org/courses/young-artists/regional-courses) or phone 020 7613 8559



# Sainsbury Centre at UEA



The Sainsbury Centre is a genre-defying art museum with world-class collections and a unique perspective on how art can foster cultural dialogue and exchange. It is one of the most important public university art galleries in Britain.

Founded in 1973 at the University of East Anglia (UEA) based on the generous donation of Sir Robert and Lady Sainsbury who donated their extraordinary art collection to the University. A radical new building by Norman Foster was designed to house the collection and was his first public work. The Centre holds one of the most impressive art collections outside of the national institutions and is located on the UEA campus, set in 350 acres of parkland. It has the largest temperature-controlled gallery spaces in the East of England.

A new Universal Ticket is now available.

The Universal Ticket gives access to the permanent collection, lower and mezzanine galleries and sculpture park.

Tickets are on a 'Pay If and What You Can' basis, so you can choose the price from free through to full membership.

No pre-booking necessary. If you would like to make a Group Booking or have additional access needs, please contact us on [scva@uea.ac.uk](mailto:scva@uea.ac.uk) or 01603 593199.

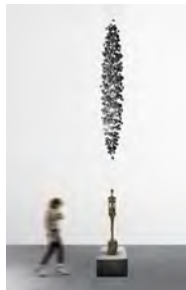
## Exhibitions

Sainsbury Centre launches the first of its new 'Big Question' seasons

### **PLANET FOR OUR FUTURE: HOW DO WE ADAPT TO A TRANSFORMING WORLD?**

The Sainsbury Centre is embarking on a new approach to exhibition programming, empowering art to address fundamental societal challenges building on its successful relaunch in May.

Artworks from all over the world will be travelling to the Sainsbury Centre to pose these urgent, global questions to visitors and to help them to find the answers. This is part of a radically new approach that understands art as alive and capable of engaging people with the fundamental questions of life.



*Anthracite coal  
and wire,  
courtesy of  
Paul Cockshedge*

Sunday 10 September 2023 to Sunday 14 January 2024

## THE STUFF OF LIFE | THE LIFE OF STUFF

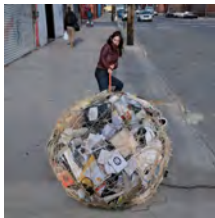
In this major international exhibition, visitors will meet artworks composed of salvaged materials, re-synthesised fragments, and e-waste. They will encounter new environmental zones, where synthetic and organic matter interact, providing a fertile ground for the invention of mythical worlds, dystopias and speculative future narratives. These hybrid living-art entities have life stories that begin with the histories of the objects from which they have been born, and which tie them intimately to the things that construct our own sense of reality and animate our immediate environments.

Sunday 15 October 2023 to Saturday 30 March 2024

## SEDIMENT SPIRIT: TOWARDS THE ACTIVATION OF ART IN THE ANTHROPOCENE

Curated by John Kenneth Paranada, the first Curator of Art and Climate Change at a UK museum, this exhibition brings together local and international artworks from the 1960s to the present day which are responding to the climate crisis in all its complexities. The provocative and interactive artworks invite audiences to view the Earth as a living and responsive being that we play an active part in sustaining. *Sediment Spirit* acts to remind audiences that our home is not just the house, the building, town or country we reside in, but the Earth itself.

Entry to all exhibitions is available with the new Universal Ticket. No need to book in advance.



Mary Mattingly, *Blockades, Boulders and Weights* 2013.  
Photo courtesy of Mary Mattingly



Fabrice Monteiro, *The Prophecy, Untitled* No. 12 Ngai 2017  
Photograph courtesy of MAGNIN-A

## SCULPTURE PARK

The Sculpture Park is a perfect place to enjoy striking art and the outdoors all year round.

Download a trail map or family pocket map from the centre's website or pick them up at Gallery Reception and explore art, architecture and the natural environment.

The Sculpture Park boasts inspiring work by notable artists such as Henry Moore, Anthony Caro, Elisabeth Frink, Laurence Edwards, Lynn Chadwick, Liliane Lijn and Anthony Gormley.



Man of Stone,  
Laurence Edwards, 2019,  
Bronze Sculpture,  
Photo Andy Crouch

The Sculpture Park is open during daylight hours.

## THE SAINSBURY CENTRE IN NORWICH ANNOUNCES MAJOR RELAUNCH FOR 50th ANNIVERSARY

2023 marks 50 years since Sir Robert and Lady Sainsbury donated their art collection to the University of East Anglia and the appointed young architect Norman Foster who created his first public building, the Sainsbury Centre, to house it. The Sainsburys believed in the power of art to connect people across time and space, and that a person's relationship with a work of art was more akin to their relationship with another person than with an inanimate object. The Sainsbury Centre is the first museum in the world that believes that art is alive. Re-capturing this essential essence of what art is, visitors to the Sainsbury Centre are told they can meet art as a living entity.

**Please do touch the art!**

Visitors can choose their own journey with an experiential, analogue or digital pathway to take through the museum. From hugging Henry Moore's *Mother and Child*, or lying down in a hammock face to face with an Alberto Giacometti, or becoming by a piece of art themselves by climbing into a glass case, visitors can experience what it's like to be an artwork on display. They can learn personal stories about works of art in the 'Living Area' via the free app.

Tel: 01603 593199 email: [scva@uea.ac.uk](mailto:scva@uea.ac.uk)

Facebook, Twitter & Instagram: [@sainsburycentre](https://www.instagram.com/sainsburycentre)

Sainsbury Centre opening times:

Tuesday–Friday 9am–6pm

(exhibitions open at 9.30am)

Saturday–Sunday 10am–5pm (last exhibition entry 4pm)

Closed Mondays, including bank holidays.



## FOR ADULTS, YOUNG PEOPLE & FAMILIES

**Online Studio** – Take part in free creative activities for all ages, designed by the centre's talented Associate Artists. From guided activities for families to unique ways to inspire positive wellbeing, start exploring at [www.sainsburycentre.ac.uk/online-activities](http://www.sainsburycentre.ac.uk/online-activities)

**Family Workshops** – Activities for families include free drop-in Family Sundays and pay-what-you-can workshops, Mini Studio and Saturday Studio.

Visit [sainsburycentre.ac.uk/whats-on](http://sainsburycentre.ac.uk/whats-on) for more information and to book activities for all ages.

## Spotlight on....

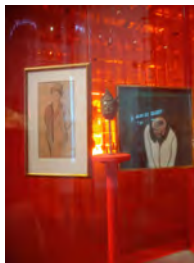


*Jago Cooper is director of the Sainsbury Centre in Norwich, an archaeologist, writer TV presenter and innovator*

### JAGO COOPER

Jago Cooper is Director of the Sainsbury Centre for Visual Arts and Professor of Art and Archaeology at UEA. Jago has worked for and with museums, universities, cultural ministries and heritage organisations around the world to explore and communicate aspects of the great human story.

His books and publications provide innovative perspectives on cultural experience and interpretation of material expression. His research has ranged broadly across universal questions facing global society including climate change, colonial encounter, technological revolution, and social innovation. After a decade working for the British Museum as the Head of the Americas, Jago joined the Sainsbury Centre for Visual Arts at UEA in 2021.



Looking at art differently



A busy day at the Sainsbury Centre

The Sainsbury Centre is a genre-defying art museum with world-class collections, exhibitions and a unique perspective on how art can foster cultural dialogue and (ex)change.

Jago spent his first year at the Sainsbury Centre getting to know the people and the institution before introducing a radical new approach. Making entry to the museum 'Pay What and If You Can', he intends to broaden the range of people that choose to come. The Sainsbury Centre is encouraging visitors to engage and interact with art in new ways, and offering different views, such as from a hammock, to help find their own ways to communicate with it.' With the appointment of John Kenneth Paranada, the first Curator of Art and Climate Change at a UK museum, from autumn 2023 to spring 2024 the emphasis is on climate change and environmental awareness. Jago has brought innovation and accessibility to this already world-class museum in Norwich, which we are lucky to have on our doorstep.



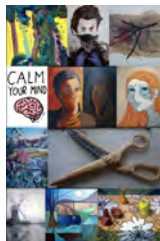
# St Etheldreda's Artists' Studios



*St Etheldreda's Church by Richard Cleland*

St Etheldreda's Artists' Studios is housed in the beautiful church of St Etheldreda, opposite Wensum Lodge in King Street. It is the longest running artists' studios in the city in one of the city's oldest streets. Currently eleven members have working spaces in the church. Some first Saturdays of the month the studios are open from 12 to 4pm to show an exhibition of fresh work by some or one of the member artists. All are welcome.

St Etheldreda's Artists Studios, King Street, Norwich  
NR1 1QH. Telephone 07799 176071  
Contact: Linda Chapman, [lindachapman49@hotmail.com](mailto:lindachapman49@hotmail.com)



Left: Open Studios Group Show  
Middle: Richard Cleland  
Above: Jeanne Gagniere

**Saturday 9 and Sunday 10 September, 10am–5pm**  
**Open as part of HERITAGE OPEN DAYS WEEKEND**

Exhibition of artworks by studio artists plus a chance to look around our church, with monuments and Norman arch porch entrance, and round tower.

**Saturday 30 September/Sunday 1 October and  
Saturday 7/Sunday 8 October from 10am–5pm**

**Open as part of NORFOLK OPEN STUDIOS**

Group show and outside drawing event from  
11am–3pm on Sunday 8 October – free, all welcome!

**OPEN SATURDAYS FROM 12–4pm**

**4 November GROUP SHOW**

**3 December WINTER WARMER:** group exhibition with  
seasonal refreshments and mulled wine

**3 February JEANNE GAGNIERE** solo show

**2 March PAUL MEADE** solo show

See St Etheldreda's Studios on Instagram for updates  
on events and more info.

## Strangers' Hall, Norwich



One of Norwich's most historic buildings, this magnificent house has been home to many of the city's leading citizens since the 14th century.

Owned by a series of wealthy merchants, during the 16th century the house became known as Strangers' Hall, referring to the 'strangers' who came to work in Norwich as weavers from France, Belgium and the Low Countries.

Now as a museum open to the public you can explore rooms furnished in the styles of different historical periods, brought to life with beautiful textiles, domestic objects and creative interpretation.

Strangers' Hall, Charing Cross, Norwich NR2 4AL  
[www.museums.norfolk.gov.uk/strangers-hall](http://www.museums.norfolk.gov.uk/strangers-hall)



### STRANGERS' HALL 100

2023 is the centenary of Strangers' Hall opening its doors as a publicly owned museum. To celebrate this milestone a new artist-designed window display celebrates some of the important figures in the museum's history and new displays and interpretation banners present archive photos and documents in the museum.

*Please note that unfortunately, due to the age of Strangers' Hall, not all spaces are completely accessible; please visit our website to find out more before you visit.*

Strangers' Hall is open on Wednesdays 10am–4pm and Sundays 1pm–4.30pm

The museum closes late December for its annual deep-clean and reopens for February half-term  
Entry is free with a Norfolk Museums Pass.



## Time & Tide Museum, Gt Yarmouth



Set in a preserved Victorian herring curing works the multi award-winning Time and Tide Museum tells the unique story of Great Yarmouth from its prehistoric origins, its fishing and maritime history, right up to the present day.

The museum also has a busy events calendar and the galleries host regular exhibitions, alongside permanent displays and activities suitable for all ages and interests.

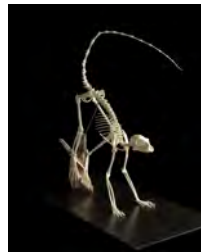
Time and Tide Museum of Great Yarmouth Life,  
Blackfriars Road, Great Yarmouth, Norfolk NR30 3BX  
[www.museums.norfolk.gov.uk/time-tide](http://www.museums.norfolk.gov.uk/time-tide)

## Special exhibitions

To Saturday 7 October 2023

### BARE BONES

Over 20 animals are represented in this exhibition which celebrates the aesthetic beauty and fascinating secrets of animal skeletons. They tell us not only about how animals move, but also what they eat, where they live, how different species relate to each other, and how they have evolved.



*Lemur skeleton*

### TIME & TIDE ONLINE EXHIBITIONS

There are also five online exhibitions – visit  
<https://artsandculture.google.com/partner/time-and-tide-museum-of-great-yarmouth-life>

## Great Yarmouth Museums

A short walk away from Time and Tide, on the South Quay, are the Elizabethan House Museum, once home to wealthy merchants and influential locals, and the Tolhouse Gaol, one of the oldest prisons in the country.

Elizabethan House, South Quay, Great Yarmouth NR30 2QH  
[www.museums.norfolk.gov.uk/elizabethan-house](http://www.museums.norfolk.gov.uk/elizabethan-house)

Tolhouse Gaol, Tolhouse Street, Great Yarmouth NR30 2SH  
[www.museums.norfolk.gov.uk/tolhouse-gaol](http://www.museums.norfolk.gov.uk/tolhouse-gaol)

## Arts & culture in Great Yarmouth



There is a growing number of arts projects in Great Yarmouth recently, in newer venues as well as old favourites. Over the last few years, money has been invested and as a result the arts scene is growing. The Great Yarmouth Preservation Trust is also doing a great job restoring heritage for the benefit of the town.

**St George's Theatre** is a main venue with theatre, music and shows all year round. The theatre was refurbished a few years ago and has a fantastic interior – it is well worth a visit as well as checking out the programme which includes a wide range of repertoire from local to national touring. **Skippings Gallery** on King Street has also been renovated and hosts regular art exhibitions.

The **Yare Gallery** on South Quay is currently closed but expected to re-open as a gallery for hire in 2023.

**Great Yarmouth Hippodrome** has 4 major circus spectaculars a year as well as hosting concerts and shows from other producers. The Hippodrome is a unique place and a must-see venue – it never disappoints! The **Empire** on Marine Parade also has a weekly music offer with DJs, established up-and-coming bands as well as street food kitchens, beer and cocktails.

**Out There Arts** (formerly Seachange) also runs regular circus and performing arts classes in their home at the Drill House as well as the epic **Out There Festival** in September which brings many visitors to the town to enjoy home-grown and international circus and outdoor arts performances in St George's Park and other locations around the town.

**Freshly Greated** is a programme of community opportunities funded under Creative People and Places.



*Carnival at The Drill House, York Road*



*Butterfly mural in Havelock Road, Great Yarmouth. Artist Sofia Camacho. Part of the Represent Mural Project in Yarmouth. Photo Davide De Almeida*

**originalprojects;** occupies the former Debenhams store, now called PrimeYarc, a creative hub and gallery that truly connects with the community around it - see pages for more about them.

There is a thriving street art scene including **Represent** CIC which has created a trail of murals around the town in a grass-roots effort to spread public street art that embellishes and enriches the visual landscape of Great Yarmouth as well explaining the heritage and culture of the town.

The town itself is a cultural wonderland with traditional seaside style on one side - sometimes surreal as a Cinderella carriage comes around the corner - the famous Giant Snails, the Big Dipper, Model Village and huge sandy beach complete with donkey rides.

On the other side, a rich maritime and industrial history on the river Yare on the docks at South and North Quay.

In the centre, the marketplace, The Rows and historic buildings are testament to a trading past. Anna Sewell lived in a cottage near the Minster and Charles Dickens wrote and set much of David Copperfield in the town.

More recently Greek, Portuguese and Eastern European residents have brought a wide range of cafés, bars and restaurants as well as traditional music and events.

**For more information about arts and culture in the town of Great Yarmouth please see the page online at [www.artinnorwich.org.uk/yarmoutharts.html](http://www.artinnorwich.org.uk/yarmoutharts.html)**

**Great Yarmouth Library** has a gallery space for art exhibitions as well as a wide range of community events.

**Time & Tide Museum** also has a regular contemporary art programme curated by Norfolk Museums, as well as permanent displays which describe the history of the fishing industry on which the town was built.

**Great Yarmouth Minster** is the main venue for organ recitals and classical music, again a spectacular heritage building in the north of the town.

**The Great Yarmouth Arts Festival** happens annually, taking place in July.

**The Venetian Waterways and Boating Lake** is an Edwardian seaside attraction that that was restored and reopened in 2019 as a result of a large Lottery-funded project. You can walk in the gardens, hire a boat or have a cuppa in the tearoom - it is also the setting for the amazing Fire on Water outdoor spectacular in November - the Waterways are located next to the North Beach.

# COURSES & WORKSHOPS & MENTORING & RESOURCES.

ACADEMY

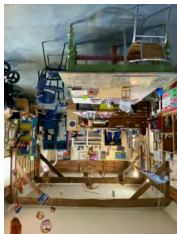
at National Centre for Writing

Find out more



[nationalcentreforwriting.org.uk/academy](http://nationalcentreforwriting.org.uk/academy)

# Barrington Farm Art Barn



Barrington Farm is a unique, independent day services centre for adults with learning difficulties, set within a 22-acre site near the North Norfolk coast.

Founded in 1987, the centre includes an organic farm, sensory room and a fully equipped supported art studio known as the Art Barn. The studio caters for most disciplines associated with the visual arts including drawing, painting, printmaking, textiles and sculpture. Many of the artists have exhibited widely and have works in public and private collections.

For more information and access enquiries please contact Sarah Ballard at [roar\\_art@hotmail.com](mailto:roar_art@hotmail.com)

Instagram: @roarartarchive

Facebook: <https://www.facebook.com/barrington.farm/>  
Barrington Farm, Walcott, Norfolk NR12 0PF

23 September 2023 to 8 October 2023, daily 10am–5pm  
Barrington Farm, Walcott, Norfolk NR12 0PF

## NORFOLK OPEN STUDIOS



Friday 29 September 2023, 2–5pm and  
Saturday 30 September 2023, 12–4pm

## HARVEST FESTIVAL

Barrington Farm warmly invites you to a Harvest Festival – a sensory arts festival celebrating rural traditions. The event will include exhibitions by self-taught artists, theatre performances, open studios, drop-in creative workshops (including the endangered craft of corn-dolly making), farm tours, food and drink and much more. Come and celebrate the Norfolk harvest with us!

Free entry but booking required. To book your place please find our listing at <https://autumnfestivalofnorfolk.org/>

*Kindly supported by Arts Council England, Norfolk County Council and The Barrington Farm Trust in partnership with The Autumn Festival of Norfolk, Sidestrand School and Norfolk Open Studios.*





Wednesday 22 to Sunday 26 November 2023

The Undercroft Gallery, at the back of the Market,  
St Peter's Street, Norwich NR2 1NE

### **EMERGE AT THE UNDERCROFT – exhibition & open call**

A new art show, *Emerge*, has been launched which aims to promote the brightest artistic talent in Norwich and Norfolk in an accessible and affordable way.

As well as featuring larger displays by more established artists, it will include an Open Call Wall. This is open to artists of all levels of experience, regardless of qualifications. Those selected to exhibit will pay what they can afford towards running costs and there will be no commission.

*Emerge* is being organised by Norwich-based artists Ben Kendall, Pinch, Amelia Butler and James Hunter.

The deadline for submissions for *Emerge* is 30 September 2023 and more details, along with an entry form, can be found at [benpaintslandscapes.com/open-call](http://benpaintslandscapes.com/open-call).

## THE UNDERCROFT GALLERY

The Undercroft is a raw and robust space found at the back of Norwich Market, under the Memorial Gardens in front of City Hall in the city centre – postcode NR2 1NE.

Owned and managed by Norwich City Council it is made available for artists and groups to curate exhibitions at a minimal charge – contact [events@norwich.gov.uk](mailto:events@norwich.gov.uk).

The entrance is tucked away down a set of steps – it is Norwich's stunning secret venue.

### EXHIBITIONS 2023

Friday 11 to Monday 21 August 11am–5pm  
Norwich 20 Group **NAKED IN NORWICH**  
Work from Norwich 20 Group life drawing sessions

Thursday 2 to Wednesday 13 September 2023  
**ELEMENTAL TERRITORIES**  
Rosie Pattison, Tom Exton, Sophia Shuvalova  
Private view 2 September 6–9pm

Wednesday 22 to Sunday 26 November 2023  
**EMERGE**

Selected artists, a mix of emerging and established artists from around the region

Exhibitions are often booked pop-up style at short notice so for future exhibitions please check <https://www.artinnorwich.org.uk/the-undercroft.html>

# Waveney & Blyth Arts



Waveney and Blyth Arts promotes the rich cultural identity of our patch by supporting the work of artists, musicians, writers and makers. We partner other arts organisations, build connections and commission and present many art forms ourselves.

For over 12 years the organisation's members have been able to use our website to promote their work, find out what's going on in the arts community round here and of course network. There's a newsletter, a jobs and opportunities bulletin, and members are listed in our creative directory. We are a registered charity, which means we can both attract funding and distribute small grants.



*Work by Tobias Ford from the 2022 Sculpture in the Valley at Potton Hall, Suffolk*

Over the years we have organised exhibitions, markets, talks, sculpture trails, guided walks, workshops, performances and environmental arts projects. And members get a discount on the events we charge for.

You don't have to be an artist to become a member: sign up (£20 a year) and you'll be supporting the whole enterprise and helping us programme events.

To find out what we're planning this year, keep an eye on our website. We're focusing on three areas – artists' and makers' markets; books, poetry and illustration; and walks. And watch out for events celebrating Roger Deakin and Ronald Blythe.

All this and more – on [www.waveneyandblytharts.com](http://www.waveneyandblytharts.com)

Facebook [WaveneyBlythArts](https://www.facebook.com/WaveneyBlythArts)

Twitter: [@waveneyblyth](https://twitter.com/@waveneyblyth)

Instagram: [@waveneyandblytharts](https://www.instagram.com/@waveneyandblytharts)



# PROMOTE YOUR EVENT OR VENUE IN NORWICH & NORFOLK



## ARTS ROUNDUP LEAFLET DISTRIBUTION SERVICE

Has been revitalised by What's On Norfolk  
If you would like to display your creative, arts and cultural events A5 and DL programmes, flyers and leaflets on our network of spinners, please contact us at [info@theshiftnorwich.org.uk](mailto:info@theshiftnorwich.org.uk) or visit [www.whatsonnorfolk.co.uk](http://www.whatsonnorfolk.co.uk)

## North of the City – take a walk



*OUTPOST Artists Studios, Gildengate House, Anglia Square*

The north of the city is busy place for new artists and creative businesses. This is soon to change with a recent planning permission to redevelop Anglia Square. Artists and community groups will have to move out and find new places to work. They have formed the Norwich Unity Hub to combine their research and resources.

In all cities there is an area which gets a bit run down and property is left empty. As values drop, it becomes feasible for artists and start-up businesses to rent space. In some cases, enlightened developers allow artists to have spaces for 'meanwhile use' until areas can be redeveloped such as St Mary's and St George's Works just off Duke Street where the Shoe Factory Social Club and Lion House are accommodating artists and creative uses.

New galleries and spaces have popped up in Magdalen Street, and all along St Augustine's Street and the Norwich Men's Shed is in Pitt Street off Anglia Square.

Norwich Hackspace, Artpocket, the Royal Drawing School and a range of artists have settled into Lion House Studios in Muspole Street, right opposite the Muspole Street Studios which has accommodated artists and potters for many years.

The Shoe Factory Social Club has regular exhibitions and Coslany Art Space in St Mary Coslany church off Oak Street is being renovated prior to opening a gallery and studios.

Many of the studios in this area offer hands-on sessions in printmaking, pottery, drawing, textiles, illustration and painting as well as accredited degree courses.

Member-led group OUTPOST has run a gallery in Tombland for 18 years and also manages around 80 artist studios in Gildengate House in Anglia Square for now at least. These all give opportunities to emerging artists, students and creatives of all ages.

As well as galleries and art spaces, there are vintage shops, makerspaces and artist shops, ethnic foods, and antiques and collectables in dig-around caverns where you will find interesting bargains and artefacts.

Take a walk along Magdalen Street and find Anteros Arts, the Merchant House Café, Sahara Café, Looses, Dhaba at Fifteen, Aladdin's Cave, the Make Place and much more.

This is definitely an area of the city to have a poke around in and explore – please do!

## A quick guide to art in Norwich



*View of Norwich from City Hall towards Norwich Castle*

Norwich is a medieval city which, in its hey-day, rivalled London in terms of size and was, for many years, England's second city, being only 100 miles from the court of London. It was a wealthy city with its fame built on the textile trade, weaving and particularly wool. Nearly half of the population was French, Dutch or Flemish and engaged in the weaving trade – hence the name of the football club, the Canaries, called after the birds which the weavers kept for company. In the Industrial Revolution, Norwich was off the beaten track for commerce and transport and so attracted artists, philosophers and radical thinkers, and was home to the famous Norwich School of Painters. Many religious non-conformists also settled here and the place became a hotbed for artists and writers, as it is today. It is also now a UNESCO City of Literature and twinned with Rouen, in Normandy, European Capital of Culture candidate city for 2028.

Amongst its many cultural assets Norwich can claim:

Norwich University of the Arts, one of the best universities for courses in animation and film, fine art and illustration, architecture, games design, graphic design, fashion, media and much more, including East Gallery in St Andrew's Street.

Norwich Castle and the Sainsbury Centre at UEA are world-class venues, attracting national-level touring shows, with permanent collections of World Art as well as work by Picasso, Henry Moore, Francis Bacon, Modigliani, Degas and local masters – Munnings and the Norwich School of Painters including work from contemporary artists such as Colin Self, and now a growing sculpture park at UEA.

Norfolk and Norwich Festival in May, an international multi-arts annual festival with 17 days of concerts, outdoor arts and theatre, both mainstream and left-field, as well as an increasingly innovative and site-specific visual arts programme.

Norwich Arts Centre is a multi-arts venue with a programme which includes live art, music and performance and the Norwich School has an events programme with a regular cycle of exhibitions in the Crypt Gallery in the Cathedral Close.

There are a number of artist-led galleries and studios, notably OUTPOST, Anteros Arts and St Etheldredas – and some well-established and very active, artists' groups such as Norfolk Contemporary Art Society, Norwich Print Fair, Norwich 20 Group and the Lonely Arts Club.

Venues such as St Mary's Works, Assembly House, The Undercroft and Greenhouse Gallery host exhibitions along with several commercial galleries such as Fairhurst and Mandell's. As well as Art in Norwich partners, there are over 900 practising visual artists and groups in Norfolk and a thriving underground arts scene in addition to the main institutions. [www.artinnorwich.org.uk](http://www.artinnorwich.org.uk)



## Art in Norwich members and venue details

- 1 Anteros Arts Foundation, 7–15 Fye Bridge Street, NR3 1LJ  
Tel: 01603 766129 [www.aterosfoundation.com](http://www.aterosfoundation.com)
- 2 Art Fair East, The Halls, St Andrew's Plain, Norwich  
(in November/December only)
- 3 Artpocket, Lion House, St George's Works, Muspole Street,  
Norwich [www.artpocket.co.uk](http://www.artpocket.co.uk): 01603 613875
- 4 The Assembly House, Theatre Street, NR2 1RQ  
Tel: 01603 626402 [www.assemblyhousenorwich.co.uk](http://www.assemblyhousenorwich.co.uk)
- 5 Crypt Gallery, Norwich School Chapel, The Close, Norwich  
NR1 4DD Tel: 01603 728430 [www.norwich-school.org.uk](http://www.norwich-school.org.uk)
- 6 East Gallery, St Andrew's Street, Norwich NR3 1BB  
Tel: 01603 610561 [www.nua.ac.uk](http://www.nua.ac.uk)
- 7 Fairhurst Gallery, Bedford Street, Norwich NR2 1AG  
Tel: 01603 614214 [www.fairhurstgallery.co.uk](http://www.fairhurstgallery.co.uk)
- 8 Fire & Flux Ceramics Gallery & Studios, Pottergate, Norwich  
Tel: 01603 322796 <https://fireandfluxceramics.wixsite.com>
- 9 The Forum, Millennium Plain, NR2 1TF  
Tel: 01603 727950 [www.theforumnorwich.co.uk](http://www.theforumnorwich.co.uk)
- 10 Mandell's Gallery, Elm Hill, Norwich NR3 1HN  
Tel: 01603 626892 [www.mandellsgallery.co.uk](http://www.mandellsgallery.co.uk)
- 11 Museum of Norwich, Bridewell Alley, Norwich NR2 1AQ  
Tel: 01603 629127 [www.museums.norfolk.gov.uk](http://www.museums.norfolk.gov.uk)
- 12 National Centre for Writing, Dragon Hall, 115–123 King St,  
Norwich NR1 1QE <https://nationalcentreforwriting.org.uk/>
- 13 Norwich Arts Centre, St Benedicts Street, Norwich NR2 4PG  
Tel: 01603 660352 [www.norwichartscentre.co.uk](http://www.norwichartscentre.co.uk)
- 14 Norwich Art Supplies, 37 St Benedicts St, Norwich NR2 4PG  
Tel: 01603 620229 [www.norwichartsupplies.co.uk](http://www.norwichartsupplies.co.uk)
- 15 Norwich Castle Museum & Art Gallery, Norwich Castle,  
Castle Meadow, NR1 3JU [www.museums.norfolk.gov.uk](http://www.museums.norfolk.gov.uk)
- 16 Norwich Cathedral, The Close, Norwich NR1 4EH  
Tel: 01603 218300 [www.cathedral.org.uk](http://www.cathedral.org.uk)
- 17 Norwich Playhouse, St George's Street, Norwich  
[www.norwichplayhouse.co.uk](http://www.norwichplayhouse.co.uk)
- 18 Norwich Studio Art Gallery, 77 Upper St Giles St, Norwich  
NR2 1AB Tel: 01603 492093 [www.studioart.org.uk](http://www.studioart.org.uk)
- 19 No.19 St George's Street, Norwich, NR31AB  
[www.printerjohnson.com/shop](http://www.printerjohnson.com/shop)
- 20 Norwich University of the Arts, St George's Building,  
St George's St, NR3 1BB Tel: 01603 610561 [www.nua.ac.uk](http://www.nua.ac.uk)
- 21 Norwich Hackspace, Lion House, Muspole Street, Norwich  
Tel: 07946 261651 [www.norwichhackspace.org](http://www.norwichhackspace.org)
- 22 Oak Circus Centre, St Michael Coslany Church, Oak Street,  
Norwich NR3 3AE Email : [Info@theoakcircuscentre.org](mailto:Info@theoakcircuscentre.org)
- 23 OUTPOST Gallery, 10b Wensum Street, NR3 1HR  
Tel: 01603 612428 [www.norwichoutpost.org](http://www.norwichoutpost.org)
- 24 OUTPOST Studios, Gildengate House, Upper Green Lane,  
Norwich NR3 1AX [www.norwichoutpost.org/studios](http://www.norwichoutpost.org/studios)
- 25 Sainsbury Centre, University of East Anglia,  
NR4 7TJ Tel: 01603 593199 [www.sainsburycentre.ac.uk](http://www.sainsburycentre.ac.uk)
- 26 St Etheldreda's Art Studios, King Street, Norwich  
Tel: 01603 631928
- 27 Greenhouse-Gallery, 42–46 Bethel Street, Norwich NR2 1NR  
[www.greenhousetrust.net](http://www.greenhousetrust.net)
- 28 Strangers' Hall, 4 Charing Cross, Norwich NR2 4AL  
Tel: 01603 667229 [www.museums.norfolk.gov.uk](http://www.museums.norfolk.gov.uk)



## WHERE TO GO IN NORFOLK

As well as exhibition venues listed in this booklet we have included other locations of interest and that often have exhibitions. The whole Norfolk coast is beautiful and varied and the coast road offers splendid views over saltmarshes and beaches. The north coast is especially good for bird watchers, seals, sailing and fishing.

A drive along the coast will take you through many picturesque villages with galleries and craft shops. Inland, market towns are also local hubs of activity. To the west and south are the Brecks – open heathland and forests.



## ART IN NORFOLK

Norwich is set in the stunning county of Norfolk. It is the centre of a busy rural hinterland, varied and beautiful. Because there is space, there are over 800 visual artists working here and it has a long history of being a creative place. And the skies, the light and the landscapes have been an ongoing source of inspiration too. Across the county you will find many galleries and exhibitions in larger venues and also pubs and cafés.

For more, check local tourist information, the National Trust properties, Wolterton Hall, Mannington Hall and the market towns of Diss, Wymondham, Loddon and Harleston to the south, Holt, Aylsham, Reepham, Cromer, Sheringham, Blakeney to the north, Great Yarmouth and Lowestoft to the east, King's Lynn and Houghton to the west.

And if you fancy some non-art time, you can't beat the Norfolk coastline, the Brecks and the famous Norfolk Broads.

Explore Norfolk – you will get hooked!

To include Suffolk as well, look at <https://www.visiteastofengland.com/> head-east

## Venues used by members for exhibitions and events

- 29** The Granary, 5 Bedford Street, Norwich NR2 1AL  
Tel: 01603 697107
- 30** St Margaret's Church of Art, St Benedict's Street, Norwich  
NR2 4AQ \*Closed for refurbishment till late autumn 2023
- 31** St Peter Mancroft Church, Hay Hill, Norwich NR2 1QQ
- 32** The Undercroft, beneath Memorial Gardens, Norwich Market  
\*Not open all the time – email [events@norwich.gov.uk](mailto:events@norwich.gov.uk)
- 33** Royal Drawing School and Lion House Studios, Lion House,  
St George's Works, Muspole Street, Norwich NR3 1DJ
- 34** Shoe Factory Social Club, St Mary's Works, St Mary's Plain,  
Norwich NR3 3AF [www.shoefactorysocial.club](http://www.shoefactorysocial.club)

## Member organisations without venues

Contemporary & Country [www.contemporaryandcountry.com](http://www.contemporaryandcountry.com)  
 Breckland Artists [www.brecklandartists.com](http://www.brecklandartists.com)  
 Lonely Arts Club [www.thelonelyartsclub.org.uk](http://www.thelonelyartsclub.org.uk)  
 Norfolk & Norwich Festival [www.nnfestival.org.uk](http://www.nnfestival.org.uk)  
 Norfolk Contemporary Art Society [www.n-cas.org.uk](http://www.n-cas.org.uk)  
 Norfolk & Norwich Art Circle [www.nnartcircle.com](http://www.nnartcircle.com)  
 Norfolk Open Studios [www.norfolkstudios.org.uk](http://www.norfolkstudios.org.uk)  
 Norwich 20 Group [www.norwich20group.co.uk](http://www.norwich20group.co.uk)  
 Paint Out Norwich [www.paintoutnorwich.org](http://www.paintoutnorwich.org)  
 Waveney & Blyth Arts [www.waveneyandblytharts.com](http://www.waveneyandblytharts.com)  
 Young Norfolk Arts Trust [www.ynaf.org.uk](http://www.ynaf.org.uk)

Art in Norwich is produced and published by Marion Catlin,  
 Culture Shift Norwich email: [info@theshiftnorwich.org.uk](mailto:info@theshiftnorwich.org.uk)  
 Tel 07946 261651 [www.theshiftnorwich.org.uk](http://www.theshiftnorwich.org.uk) E&OE

## Venues around Norfolk see map on page 60

- 35** Barrington Farm, Walcott, Norfolk NR12 0PF Tel: 01692 650707
- 36** Bayfield Hall, Letheringsett with Glandford Norfolk NR25 7JN
- 37** Bircham Gallery, 14 Market Place, Holt NR25 6BW  
[www.birchamgallery.co.uk](http://www.birchamgallery.co.uk) Tel: 01263 713312
- 38** The Corn Hall, 10 St Nicholas St, Diss IP22 4LB  
Tel: 01379 652241 [www.thecornhall.co.uk](http://www.thecornhall.co.uk)
- 39** Cromer ArtSpace, The Esplanade, Cromer NR27 9HE  
<https://cromer-artspace.uk/>
- 40** GroundWork Gallery, 17 Purfleet, King's Lynn, Norfolk  
PE30 1ER [www.groundworkgallery.com](http://www.groundworkgallery.com)
- 41** Houghton Hall and Gardens, King's Lynn PE31 6UE  
[www.houghtonhall.com](http://www.houghtonhall.com) Tel 01485 528569
- 42** Harleston & Waveney Art Trail, Harleston [www.hwat.org.uk](http://www.hwat.org.uk)
- 43** Lynn Museum, Market Street, King's Lynn PE30 1NL  
[www.museums.norfolk.gov.uk](http://www.museums.norfolk.gov.uk)
- 44** The School House Gallery, Wighton, Wells-next-the-Sea  
N. Norfolk NR23 1AL [http://alfredcohen.org/about/](http://alfredcohen.org/about/originalprojects)  
originalprojects; PRIMEYARC, former Debenhams, Market  
Gates, Great Yarmouth, Norfolk [www.originalprojects.space](http://www.originalprojects.space)
- 45** Raveningham Centre, Raveningham, Norfolk NR14 6NU  
[www.raveninghamsculpturetrail.com](http://www.raveninghamsculpturetrail.com)
- 46** Skippings Gallery, 133 King Street, Great Yarmouth NR30 2PQ  
Tel: 07472 572398 email [lyn@gy-pt.org](mailto:lyn@gy-pt.org)
- 47** Time & Tide Museum, Blackfriars' Road, Great Yarmouth,  
Norfolk NR30 3BX [www.museums.norfolk.gov.uk](http://www.museums.norfolk.gov.uk)
- 48** Wells Maltings Arts Centre, Wells-next-the-Sea, Staithe Road,  
Norfolk NR23 1AN [www.wellsmaltings.org.uk](http://www.wellsmaltings.org.uk)
- 49** The Yare Gallery, 26 South Quay, Great Yarmouth,  
Norfolk NR30 2RG [www.yare.org.uk](http://www.yare.org.uk) (check opening)

Art in Norwich partners are:



Great Art for Our Region

SAINSBURY  
CENTRE



NORWICH  
UNIVERSITY  
OF THE ARTS



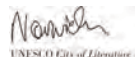
NORWICH STUDIO  
ART GALLERY



SADACC  
Trust



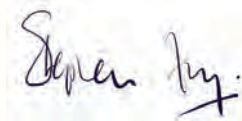
King's Lynn Festival



Printed by Barnwell Print Ltd, Aylsham, Norfolk  
on paper Carbon Balanced with the World Land Trust

www.carbonbalancedprinter.com  
Barnwell Print Reg. No. 2102

*'The city of Norwich has many fans, of which I am one. It has a fantastic and historic urban fabric, a glorious rural hinterland and an unparalleled coastline of which I am proud to be able to tell people. I support the football club here and applaud the initiatives which I see taking place all over the city, wrought by the many excellent cultural organisations who work together to ensure an excellent quality of life for the citizens and those who are lucky enough to visit or stay.'*



Art in Norwich is published by Culture Shift twice a year, Spring and Autumn, and is funded by its partners working together to showcase the great art and culture in Norwich and Norfolk all year and every year.

Thank you.

[www.artinnorwich.org.uk](http://www.artinnorwich.org.uk)



The East Anglia Art Fund (EAAF)  
is dedicated to enriching cultural life  
in Norfolk and Suffolk by supporting  
the best in exhibitions and art education.

Membership benefits include:

Exclusive events – artist and curator talks,  
exhibition tours and gallery and studio visits.

Invitations to opening events at Norwich  
Castle Museum & Art Gallery.

Free entry to Norwich Castle and all  
the exhibitions we support in the region.

Our members are making sure that great  
art happens, right here where they live.  
Join us.

Become an EAAF member.  
Visit [www.eastangliaartfund.org.uk](http://www.eastangliaartfund.org.uk)  
Telephone 01603 493 668

The logo consists of a solid blue square. Inside the square, the words "EAST", "ANGLIA", "ART", and "FUND" are stacked vertically in a white, bold, sans-serif font.

EAST  
ANGLIA  
ART  
FUND

Great Art for Our Region

Autumn/Winter 2023/2024

# ART & CULTURE IN NORWICH & NORFOLK



A directory and round-up of exhibitions and events and a guide to getting the best out of a visit to Norwich and Norfolk



Norwich, a very fine cultural city  
best explore it!

Art in Norwich is produced by The Shift Norwich  
and Norwich Visual Art Forum  
[www.artinnorwich.org.uk](http://www.artinnorwich.org.uk)



Shift Norwich



Art in Norwich