

The background of the top half of the poster is a collage of various art-related images. It includes a painting of a city street with a large building in the background, a portrait of a man with a beard and a cap, and a painting of a street scene with a bridge. The text is overlaid on these images.

ART IN NORWICH

Rembrandt : Lightening the Darkness : Norwich Castle : 21 October to 7 January '18

Russia Season : Sainsbury Centre for Visual Arts : 14 October to 11 February '18

Paint Out Norwich : Hostry Festival : Norwich Cathedral : 19 to 28 October '17

Dozens more exhibitions at galleries & studios in Norwich and Norfolk

FREE
GUIDE

ART IN NORWICH

a round-up of visual art exhibitions
and events in Norwich and beyond

August 2017 to March 2018

Exhibitions at a glance : August '17 to March '18

Please use this calendar as a quick month-by-month reference. The dates shown are start dates. The darker bands indicate a show spanning more than one month.

CONTINUING EXHIBITIONS

Until 20 August	OUTPOST : Caspar Heinemann	37
Until 27 August	Mannington Hall : Abstracted	23
Until 10 September	Norwich Castle : ncas Sixty Years On	23
Until 30 September	Houghton Hall : Norfolk by Design	6
Until 1 October	Norwich Castle : Nelson and Norfolk	27
Until 1 October	Sainsbury Centre for Visual Arts : Rana Begum	40
Until 2 October	Theatre Royal : Sally Hirst	44
Until 29 October	Felbrigg Hall : The Makers	23
Until July 2018	Norwich Castle : Magritte : The Lost Painting	27

AUGUST 2017

		page
5-20 August	Breckland Artists : The Undercroft	see website
18 August	Waveney Valley Sculpture Trail at Raveningham	see website
21 August-17 November	Norfolk Record Office : Norfolk Churches	20
28 August-30 September	Dove Street Studios : Alida Sayer	11
29 August-16 September	Anteros Arts : Parker & Utting	8
30 August-7 October	East Gallery NUA : In Quotes	34

SEPTEMBER 2017

		page
1-23 September	Mandell's Gallery : Brigitte Anne Hague	19
1-24 September	Norwich Cathedral Hostry : Beasts and More Beasts	27
4-16 September	Norwich Print Fair : St Margaret's Church	28
5-30 September	The Undercroft : The Art of Revolution : PV 4 Sept	49
6-27 September	Norwich Arts Centre : Nick Warburton	25
7 September-1 October	OUTPOST : Jenna Bliss	37
8-30 September	Fairhurst Gallery : Guy Allen	12
8 September-14 October	Greenhouse Gallery : Future Heritage	17
9 September-4 October	Bircham Gallery, Holt : Prout & Wood	57
9/10 September	St Etheldreda's : Heritage Weekend Group Show	43
9/10 September	Cromer Museum : Workshop with Lieta Marziali	58
11-16 September	The Forum : Andrew Dibben	14
11-16 September	The Forum : Art of Revolution	15
15-17 September	NN Art Circle : Brancaster Staithe : Member's Show	15
19-30 September	Anteros Arts : John Midgley	8
18 September	City Hall : Art of Revolution : Prof. Lynda Morris Talk	48



Cover: Rob Pointen, *Pigeons and Chips*



Rembrandt
Self-Portrait
see page 28

From the editor:

Welcome to Art in Norwich Autumn & Winter 2017/18

Rembrandt is coming! The exhibition at Norwich Castle Museum and Art Gallery includes 85 etchings, three paintings and two monochrome drawings from the great master. The exhibition opens 21 October and runs till January 2018. This will be a special show. There is a display of the mysterious Magritte 'lost' painting which was discovered in 2016 under another Magritte work, by Castle conservators.

The 100th anniversary of the Russian revolution has provoked several exhibitions marking the event – the Russia Season at the Sainsbury Centre for Visual Art, with two related exhibitions plus the installation of a 10 metre model of the Tatlin Tower in the sculpture park – see page 21. Also related to the anniversary, Art of Revolution starts at the Undercroft, 4 September and includes related events around the city – see page 48.

SEPTEMBER 2017 continued		page
--------------------------	--	------

23 September	NN Art Circle demonstration : Vic Bearcroft	24
23 Sept–25 March '18	Norwich Castle : We Came Here to Conquer	28
24–27 September	The Forum : Perspectives	15
28 Sept–15 October	Cathedral Hostry : Konstantynowicz	30
30 Sept–2 December	Royal Drawing School : Young Artists programme	38

OCTOBER 2017		page
--------------	--	------

1–28 October	Mandell's Gallery : Rob Pointon	19
1–31 October	Festival of Architecture Norfolk & Norwich : FANN17	13
3–14 October	Anteros Arts : Wesselmann, Hewitt, Ebel	8
3–29 October	Dove Street Studios East Street Arts residency	11
4–25 October	Norwich Arts Centre : Marcia X	25
4 October–16 January	Theatre Royal : Hellesdon High School	45
5 October–10 November	Hudson Gallery : Hannelore Smith	18
7 October	St Etheldreda's : Fliss Cary	43
7 October–1 November	Bircham Gallery, Holt : Newland and Purvey	57
11 October	The Forum : ncas : Russia Season Talk	21
14–18 October	Cathedral Hostry : Paint Out Norwich	7
14 October–16 December	Groundwork Kings Lynn : Fire and Ice	57
14 October–11 February	SCVA : Russia Season : Royal Faberge & Radical Russia	41
17–28 October	Anteros Arts : Pomegranate	8
17 October–18 November	Fairhurst Gallery : Joni Smith	12
18 October–4 November	East Gallery NUA : New, NUA, Newest	35
19 October	Sir Thomas Browne Day : events in the city	51
19–28 October	Norwich Cathedral Hostry : Paint Out Norwich	30
21 October–7 January	Norwich Castle : Rembrandt : Lightening the Darkness	28
21 October–15 April	Time & Tide Museum : Tony Ray-Jones & Martin Parr	60
28 October	NN Art Circle demonstration : Gareth Jones	24
30 October–11 November	Anteros Arts : Brian Korteling	8

NOVEMBER 2017		page
---------------	--	------

1 November	The Forum : ncas : Calvin Winner Talk on UEA Sculpture Park	21
1 November–1 December	Dove Street Studios : Alec Cumming	11
1 November–20 December	Norwich Arts Centre : Andi Sapey	25
3–24 November	Cathedral Hostry : Murals of the Bogside Artists	31
4 November	St Etheldreda's : Cora Shearing	43
4–10 November	Undercroft : Balance : Raymond Noakes	49
4 November–10 January	Bircham Gallery, Holt : Christmas Exhibition	57
5–25 November	Mandell's Gallery : Emrys Parry	19

As well as the Russia Season, SCVA also has an exhibition of outstanding ceramics by Roger Law, famous for his time as a Spitting Image caricaturist, now a ceramicist – *page 41*.



Paint Out Norwich, part of the Hostry Festival, gets people out and about round the city, painting *in plein air* with some great results which are shown in an exhibition in the Hostry in October.

The Cathedral also runs a series of exhibitions – I am especially looking forward to Murals of the Bogside Artists and the Tentmakers of Cairo (*page 31*) – both very specific to their 'place'.

This autumn we also have the ever-popular Norwich Print Fair in September and FANN Festival of Architecture in October.

There are great opportunities to take part in art activities too – see courses by Artpocket, Royal Drawing School and Anteros Arts.

Out of Town there are new exhibitions at GroundWork in Kings Lynn and Bircham Gallery in Holt and also Richard Long at Houghton Hall. In Great Yarmouth, Time & Tide Museum has an exhibition of photographs by Tony Ray-Jones & Martin Parr (*p.63*). There is so much more going on than I can list here so keep an eye on the website www.artinnorwich.org.uk

NOVEMBER 2017 continued		page
6-12 November	The Forum : NN Art Circle Member's Show	15 & 24
9 November-17 December	OUTPOST : Member's Show	37
10-24 November	Gallery Norfolk : Norwich : Punk Photos	16
13-25 November	Anteros Arts : Marion Johns	8
14-19 November	The Forum : Wexhibition	15
14 November-6 January	East Gallery NUA : Jerwood Drawing Prize	35
16-18 November	The Forum : Richardson & Zocca	15
17/18 November	Norwich 20 Group : Affordable Art Sale	26
17-21 November	Undercroft : Richard Shepherd	49
17 November-23 Dec	Greenhouse Gallery : Environmental Art Fair	17
18 November-3 April	SCVA : Roger Law : Satire to Ceramics	41
24 November	City Hall : ncas Charity Art Auction	22
27 November-9 December	Anteros Arts : Hannah Giffard	8
30 November-12 Dec	Cathedral Hostry : Norfolk Contemporary Crafts Society	31

DECEMBER 2017		page
1-3 December	St Andrew's Hall : Art Fair East 17	9
1-23 December	Fairhurst : Crane and Stanley	12
1 December-21 January	The Forum : Brick Wonders	15
2-30 December	Mandell's Gallery : Christmas Exhibition	19
8/9 December	The Forum : Out of the Box	15
15/16 December	The Forum : Sophia Flowers	15
16 December	Cathedral Hostry : Tentmakers of Cairo	31

JANUARY 2018		page
Date TBC	Mandell's Gallery : Martin Laurance	19
3 -27 January	Greenhouse Gallery : Environmental Art Fair	17
10-31 January	Norwich Arts Centre : Will Teather	25
13 January-21 February	Bircham Gallery, Holt : Printmakers	57
20 Jan-24 March	Royal Drawing School : Young Artists programme	38

FEBRUARY 2018		page
3 February	St Etheldreda's : Group Drawing Show	43
7 February-14 March	Norwich Arts Centre : Visible Girls	25
9 February	The Hostry : ncas Talk : John McLean	22
10 February-3 June '18	Norwich Castle : Square Box on the Hill	

MARCH 2018		page
3 March	St Etheldreda's : Frances Martin	4
3 March-20 May	Norwich Castle : Open Art Show	29



Art in Norwich is produced by Culture Shift in association with Norwich Visual Art Forum as a companion to **Music in Norwich**, a roundup of concerts and music events in Norwich which you can find on www.musicinnorwich.org.uk or printed copies around the city. The next edition is due out in September and covers concerts until April.

Information about Culture Shift can be found at www.theshiftnorwich.org.uk where you can also find an overview of Norwich culture and other useful information.

You can sign up for email updates via Culture Shift on the website.

Errors and omissions excepted, info is checked as well as possible but cannot be guaranteed. Please confirm before travelling

If you require copies to display please email info@theshiftnorwich.org.uk 07946 261651

About Art in Norwich

This programme is the result of a collaboration of the Norwich Visual Art Forum, a number of organisations who promote visual art, public art, craft and architecture in and around Norwich. The aim is to gather visual art listings in one place so that they are easy to find and to offer an overview of art activity and infrastructure across the city and throughout the year. The Norwich Visual Art Forum is a self-supporting partnership of visual art groups and organisations active in Norwich and the surrounding area.

We hope you will keep this booklet safe as it covers six months' programming. Because of space limitations and lots going on, exhibition and event details are brief but you can find out more from individual organisations and venues from their own websites. See pages 61/62 for contact and venue details.

Please also visit our website at www.artinnorwich.org.uk where you can download a pdf of this programme.

Important: All information is subject to change - please check with individual organisations before travelling to an event.

Image : Roger Law, Charger, Sainsbury Centre - see page 41



**SAINSBURY
CENTRE**
for Visual Arts

www.scva.ac.uk

Roger Law
From Satire to
Ceramics

18 November 2017
to 3 April 2018

NORFOLK
BY DESIGN

SHOP
ONLINE

FOR ART, DESIGN AND CRAFT
NORFOLK-BY-DESIGN.CO.UK



Norfolk by Design holds pop-up exhibitions in unusual spaces, presenting work by artists, craftspeople and designers inspired by Norfolk's beauty.

Join our mailing list for more details about our next **NORWICH POP-UP WINTER 2017**



PAINT
OUT

Norwich

14-18 Oct 2017

COMPETITION
WORKSHOPS
PUBLIC PAINT OUT
GALA • EXHIBITION
ART SALE • AWARDS

Painting: 'Norwich Market' by Robert Nelmes. Photograph © Katy Jon Went

14 Oct: Art Workshops • 15 Oct: Public Paint Out • 16/17 Oct: Competition
18 Oct: Gala Private View • 19 Oct onwards: Exhibition at Cathedral Hostry

paintoutnorwich.org



EXPERIENCE
ART. LIVE

Anteros Arts Foundation



Open Tuesday to Saturday 9am–5pm
11–15 Fye Bridge Street, Norwich, NR3 1LJ
T: 01603 766 129 Email: enquiries@anteros.co.uk
www.anterosfoundation.com

The Anteros Arts Foundation is a charity for education and the promotion of the arts in Norfolk.

We teach short courses in fine art skills and are delighted to be in the inaugural year of our Anteros Arts Diploma. Listings of upcoming courses are on the Anteros website and are updated regularly, see www.anterosfoundation.com.

Our art reference library is available for students as well as the general public to learn a new skill, discover an artist or gain inspiration from. We have two gallery spaces, each with a different exhibition at any one time. Exhibitions rotate fortnightly and are always free admission.

N.B. Anteros is closed from the 24 July until 27 August for building maintenance.

Exhibitions 2017

29 August to 16 September : **KEVIN PARKER AND SOPHIE UTING**

19 September to 30 September : **JOHN MIDGLEY**

3 October to 14 October : **MONIKA WESSELMANN, ANGIE HEWITT & JANE EBEL**

17 October to 28 October : **POMEGRANATE**

30 October to 11 November : **BRIAN KORTELING**

13 November to 25 November : **MARION JOHNS**

27 November to 9 December : **HANNAH GIFFARD**

Anteros Arts Foundation registered charity no. 1135692

Art Fair East 2017



One of Norfolk's major temporary exhibitions, Art Fair East aims to deliver the best the art-world has to offer to the Eastern Region.

A wealth of knowledgeable and experienced dealers and artists will be on hand to help visitors to build a superb collection of visual art from the UK and overseas. All work is available to buy and will vary from affordable prints by recognised artists and new talent through to serious investments.

ART FAIR EAST 1 to 3 December 2017

St Andrews Hall, St Andrew's Plain,
Norwich NR3 1AU

Friday 1 December 10.30am to 5.30pm

Saturday 2 December 10.30am to 6pm

Sunday 3 December 10.30am to 5pm

Tickets £4 or £3 concessions
under 14s free

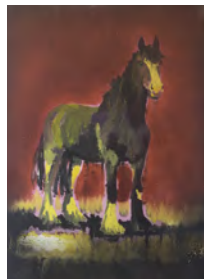
www.artfaireast.com



Large Gold,
Sara Cate Blake



Laurie Rudling



Horse, Will Teather



Artpocket Creative Art Courses



Artpocket is a collaboration of artists who aim to increase the creative output of others and tap into hidden talent. We develop and deliver educational programmes that provide opportunities for both adults and children to access skills, tuition and support with professional development at any stage of their creative career. All our tutors hold teaching qualifications and have a wealth of experience in delivering creative education. In our airy space at Lion House we are well equipped with a main studio and secondary print and textiles workshop, providing a professional and creative space to unleash your potential.

2nd Floor, Lion House, Muspole Street, Norwich NR3 1DJ
Email: info@artpocket.co.uk
Call: Becky 07903 818017, Hannelore 07789 985008

Artpocket run the following courses:
(NEW) Postgraduate Programme in Creative Practice – September 2017.
Course fee £1450 (1 year part time)

Foundation Diploma in Art & Design
September 2017. Course fee £4250 (2 years part time)

SHORT COURSES:

Art Direction (12 weeks) Tuesdays 10am–2pm
Begins 12 September 2017. Cost £360

Contextual Studies (5 weeks) Wednesdays 6–8pm
Begins 20 September. Cost £70

Life Drawing – (6 weeks) Wednesdays 12.30–2.30pm –
Begins 1 November. Cost £95

Printmaking (6 weeks) Thursdays 6–8pm
Begins 2 November. Cost £105

Textiles – (6 weeks) Mondays 6–8pm
Begins 6 November. Cost £105

Craft Tapas (10 weeks) Mondays 6–8pm
Begins 15 January. Cost £150

Book Arts (6 weeks) Mondays 6–8pm
Begins 19 February. Cost £105

We also run a variety of courses for Young People –
see details and the latest programme on our website



Dyad Creative/Dove Street Studios



*Hannah
and Théo in
Dove Street
Studios*

Dyad Creative is a Franco-British collaboration founded by artists Théodora Lecrinier & Hannah Turner Wallis in 2014. Focussing on visual arts and contemporary performance, Dyad Creative explore themes of communication and collaboration through diverse art projects and the running of creative spaces.

Dyad Creative provide local and visiting artists as well as the local community with a rolling calendar of events across Norwich. They act as facilitators and instigators, supporting artists and aiming to create a vibrant hub for contemporary practice. They also curate a residency programme at Dove Street Studios selecting local, national and international artists to work in the heart of Norwich Lanes and overlooking the market square.

Coming up with Dyad Creative at Dove Street Studios

Thursday 27 July to Thursday 10 August 2017

CHARLOTTE BARLOW IN RESIDENCY

PV 10 August 2017, 5.30pm – 7.30pm

Monday 28 August to Saturday 30 September 2017

ALIDA SAYER IN RESIDENCY

PV 28 September 2017

Tuesday 3 October to Sunday 29 October 2017

**EAST STREET ARTS ASSOCIATE ARTIST
IN RESIDENCY**

PV 26 October 2017

Wednesday 1 November to Friday 1 December 2017

ALEC CUMMING IN RESIDENCY

PV 30 November 2017

Dyad Creative will be running Gold Arts Award from November 2017. To apply: contact@dyad-creative.com
Dove Street Studios, 2 Dove Street, Norwich, NR2 1DE

For updates follow Dyad Creative on Facebook,
Instagram & Twitter – [@dyadcreativetwo](#)

All enquiries: contact@dyad-creative.com
www.dyad-creative.com

Fairhurst Gallery



Tucked away in the Norwich Lanes, the Fairhurst is a unique and charming gallery space.

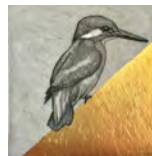
Established in 1949, the Fairhurst Gallery and Picture Framers is a hidden gem in the historic centre of Norwich in Bedford Street. The framing workshop offers artistic services of the highest quality and the Gallery champions contemporary fine art.

There are regular exhibitions platforming the best of the region's talent.

Exhibitions

Friday 8 to Saturday 30 September 2017
GUY ALLEN

Beautifully crafted etchings and screen prints of Norfolk wildlife with gilt and paint finishes. Large and smaller pieces available for purchase.



Tuesday 17 October to
Saturday 18 November 2017
JONI SMITH

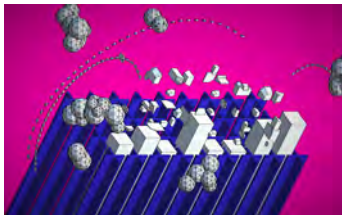
A highly skilful paper and installation artist. Joni manipulates fragments of maps and atlases, cutting and folding them to create exquisitely intricate artworks.



Friday 1 December to Saturday 23 December 2017
OLIVIA CRANE & GEORGINA STANLEY

Stunningly executed, figurative oil paintings. Both artists are classically trained and use traditional techniques to produce still-life, portraits and drawings.

Admission free. Open Tuesday to Saturday 9.30am-5.30pm
Tel: 01603 614214 Email: enquiries@fairhurst.co.uk
www.fairhurstgallery.co.uk



FANN17, the fifth biennial celebration of architecture in Norwich and Norfolk, is organised by the Norfolk Association of Architects (NAA), the local branch of the Royal Institute of British Architects (RIBA).

Focusing on an overriding theme of Memory, FANN17 will explore contemporary architecture and design through walking tours, film and art.

The exhibition will feature the work and ideas of the county's architects, and outstanding work in Norfolk by architects from further afield: buildings, interiors, landscape design and master planning. The FANN17 Exhibition, at The Forum, runs from Tuesday 3 October to Friday 13 October, with other events in the city spread across October, including children's events through the half term week at the Castle.

The 2017 programme will include:

- The 2017 Norwich Lecture at University of East Anglia by Peter St John, Caruso St John Architects winners of the 2016 Stirling Prize
- Design & Craftsmanship Awards evening at The King's Conference Centre, King Street
- Pecha Kucha evening at Cinema City
- Architecture-themed guided walking tours at UEA and in Norwich city centre
- Talks on Bauhaus and Passivhaus
- Hat-itecture – children's activities at Norwich Castle Museum & Art Gallery
- Architecture on Film – classic films at Cinema City in which architecture shapes dystopian landscapes
- *Monumental* at Hudson Gallery – exhibition by multi-disciplinary artist Hannelore Smith
- FANN17 photography competition – finalists' work displayed during the NAA Architects' Exhibition at The Forum

For dates and information see www.fann17.org.uk

The Forum



The Forum, in the heart of Norwich city centre, is home to a year-round programme of FREE exhibitions, events and activities. It's also a great place to grab a coffee, a bite to eat and explore one of the UK's busiest libraries.

The Forum's website has info on day-to-day events in the huge, glass Atrium, the Gallery and the Auditorium.

Our programme of events is packed with an eclectic mix of art, literature, dance, music, sport, heritage, science and technology. The Forum is open seven days a week from 7am to midnight, with plentiful parking underneath.

We have regular shows by local artists and craftspeople and this is only a selection so please visit the website for further information: www.theforumnorwich.co.uk

Exhibitions



Norfolk Craft Guild, Seascape

Friday 1 & Saturday 2 September 2017, 10am-5pm

NORFOLK CRAFT GUILD

A diverse range of work including woodworkers, silversmiths, jewellery makers, sculptors, potters, glass workers, textile artists, knitters and paper crafts people.

Monday 11 to Saturday 16 September 2017, 10am-5pm

ANDREW DIBBEN EXHIBITION

An exhibition of watercolour paintings by this local artist.

*End of the Day,
Andrew Dibben*





*Art of Revolution
Gennadiy Ivanov*



*Wexhibition:
Smoke and Mirrors
Paul Burgess*

Monday 11 to Saturday 16 September 2017, 9am-5pm
THE ART OF REVOLUTION

This exhibition marks the 100th anniversary of the Bolshevik October Revolution and explores its significance and cultural legacy.

Sunday 24 to Wednesday 27 September, 9am-5pm
PERSPECTIVES 6

Annual showcase of artwork by students from Wymondham College.

Monday 6 to Sunday 12 November 2017, 9am-4.30pm
NORFOLK & NORWICH ART CIRCLE EXHIBITION

Exhibition of around 100 pieces of work by local artists.

Tuesday 14 to Sunday 19 November 2017, 10am-5pm
WEXHIBITION

The fifth Wex Staff Photography Exhibition brings together over 50 works from staff photographers.

Follow The Forum on Twitter –
@TheForumNorwich – and Facebook – The Forum,
Norwich – for updates, images and videos.

Tuesday 16 to Saturday 18 November 2017, 10am-5pm
MARY RICHARDSON & PIA ZOCCA

Exhibition of work mixing glass collages and designer lamps together with wildlife sculpture cast in bronze and other metals.

**Friday 1 December to Sunday 21 January 2018,
10am-4pm inside The Gallery**
BRICK WONDERS

Exhibition featuring recreations in Lego bricks of amazing sights from around the world.

Friday 8 & Saturday 9 December 2017, 9am-5pm
INSIDE THE BOX

Exhibition by Agnieszka Siwonia who works with ethical, sustainable products and promotes upcycling

Friday 15 & Saturday 16 December 2017, 8.30am-5pm
SOPHIA FLOWERS ART EXHIBITION

Artwork inspired by a vibrant palette awash with a rainbow of colours from nature.

The Gallery Norfolk : Norwich & Cromer



Norwich



Cromer

The Gallery Norfolk has two homes – Norwich and Cromer – and focuses on high quality contemporary art and a carefully chosen selection of handmade craft and jewellery, much with an East Anglian connection.

We love unusual and quirky things at The Gallery Norfolk and have a wide range of art and craft on show, including original oils, limited edition prints, photography, ceramics, glass and sculpture.

Norfolk painter Ruth Bunnewell is a firm favourite, tipped by House and Garden magazine as a rising star of British landscape painting, plus other highly regarded East Anglian painters, print-makers and contemporary makers of local and national renown.



Left: Breckland Landscape
by Ruth Bunnewell



Exhibition

Friday 10 November to Friday 24 November 2017

The Gallery Norfolk, 60 St Giles Street, Norwich

PUNK – PHOTOS BY SHEILA ROCK

These photos are a kind of reportage of the early punk scene in London. Says Sheila *"I just drifted into the scene and was immediately struck by the creativity and style of these young people. In 1976, you could tell something was happening and these kids were at the vanguard of that change"*

The Gallery Norfolk is at

60 St Giles Street, Norwich NR2 1LW 01603 761900

3 Church Street, Cromer NR27 9ER 01263 515745

Opening hours 10am–5pm Monday–Saturday

www.thegallerynorfolk.co.uk

email: polly@thegallerynorfolk.co.uk

Greenhouse Gallery



The Greenhouse Gallery is a contemporary Environmental Art Gallery and stocks fine art, cards, prints, paintings, books with a licensed organic café and courtyard garden.

Visit the website for opening times and exhibition details: www.greenhousetrust.co.uk

42-46 Bethel Street, Norwich NR2 1NR
Open Tuesday-Saturday 10am-4.30pm

Exhibitions

Friday 8 September to
Sunday 14 October 2017

FUTURE HERITAGE EXHIBITION 2017-2047

2017-2047 is the period in which
the Green revolution must occur.

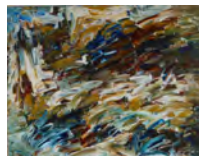
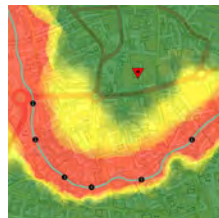
This exhibition is a glimpse into
what that might mean in Norwich.

Includes 'How Come We Didn't Know?' photographs by
Marion Macalpine: exploring buildings that host the
organisations that are privatising the NHS.

*Organised in conjunction with the 'Art of Revolution'
exhibition in the Undercroft (top of Norwich Market)
curated by Russian artist Gena Ivanov (see page 47)*

Friday 17 November to
Saturday 23 December then
Wednesday 3 January to
Saturday 27 January 2018
**5th ENVIRONMENTAL
ART FAIR**

Contemporary work by local artists, supporting the
Greenhouse Trust and the Soil Association's Living Earth
campaign. Books, Xmas cards and gifts supporting
Amnesty, Survival and Friends of the Earth.



The Hudson Gallery



The Hudson Gallery is a new city centre exhibition space, focusing on work by artists exploring the relationships between art, design and the built environment.

The gallery is owned and curated by Hudson Architects – the region's leading design-led architecture practice who are long-standing supporters of the arts community in East Anglia.

HUDSON Architects
37 St Andrews Street, Norwich NR2 4TP
T: 01603 766 220

Exhibition

Thursday 5 October to
Friday 10 November
Thursdays 12pm–2pm
or by appointment
In association with FANN17

MONUMENTAL BY HANNELORE SMITH

In *Monumental*, Hannelore Smith presents recent work in response to architecture and the maker.

With a grandfather who was a cabinet-maker, father an architect and husband an electro-mechanical engineer; she has spent a lifetime as a witness to the untold hours that go into constructing our environments. Architectural blueprints and the multitude of processes related to physical construction all inform her work and use of materials. She creates textural, monochromatic, compositional works using textiles, printmaking and 3D processes.

www.hudsonarchitects.co.uk/gallery
Twitter @hudsonarch
[Facebook.com/hudsonarchitects](https://www.facebook.com/hudsonarchitects)



Stack, Hannelore Smith



Mandell's Gallery



Mandell's Gallery is one of Norwich and Norfolk's most respected commercial art galleries. Mandell's Gallery was founded in 1965. Originally specialising in 19th century Norwich School painters, the gallery has expanded greatly and now has a diverse collection of traditional and contemporary art, offering opportunities for many new and local artists as well as more established names. You are welcome to view the collection at the art gallery, situated on the beautiful and historic street of Elm Hill, near Norwich Cathedral.

The gallery is open Monday to Saturday 10am–5pm
Info www.mandellsgallery.co.uk Tel: 01603 626892

Exhibitions

1-23 September BRIGITTE ANNE HAGUE

Brigitte Anne Hague trained as a painter and print-maker at Norwich School of Art and Design in 2005. She specialises in large 'one-off' silkscreen prints. Her vibrant works explore the use of colour, shape and mark to create mood, atmosphere and currents of energy.

1-28 October 2017 ROB POINTON

Rob Pointon is a UK Plein Air artist whose understanding of drawing can be seen at the core of his work. Rob was the winner of the prestigious Howarth Prize at the Mall Galleries, London and the Winsor & Newton Artist Award at the Royal Institute of Oil Painters Annual Exhibition.

5-25 November 2017 EMRYS PARRY

Emrys Parry's studio is on the eastern edge of East Anglia. Yet it is to his childhood home on the Llyn peninsula of north-west Wales that much of his art refers. Memories of Celtic mythology and legend are visible, echoing rhythms and patterns of music and poetry of ancient tradition.

2-30 December 2017 CHRISTMAS EXHIBITION

Mandell's Gallery annual mixed Christmas Exhibition.

Jan/Feb 2018 (date tbc) MARTIN LAURANCE

Martin Laurance has a unique style. His artworks are strong and textural, and this combined with his confidence in using vibrant colours result in highly individual work.





The Norfolk Record Office collects and preserves unique archives relating to the history of Norfolk and makes them accessible to people in Norfolk and across the world.

We have an exhibition space, The Long Gallery, which holds exhibitions for up to 3 months at a time. The case is temperature and humidity controlled allowing original documents to be displayed. Many of our exhibitions are part of a joint project with an external organization.

Exhibition

Monday 21 August to Friday 17 November 2017

DRAWING IN THE ARCHIVE: THE VISUAL RECORD OF NORWICH'S MEDIEVAL CHURCHES, 1700-2017

Based on new research, this exhibition explores the rich visual record of Norwich's medieval parish churches.

Since 1700, artists, antiquarians and archaeologists have drawn the City's churches in diverse ways. The remarkable archive that they have left reveals information about the churches that would otherwise be lost and encourages us to look again, and look differently, at these familiar landmarks.

Open Monday, Wednesday & Friday, 9am- 5pm

Tuesday 9.30am-5 pm

Thursday 9am-7pm

There is no charge for visiting the exhibition.

More info www.archives.norfolk.gov.uk

The Archive Centre, Martineau Lane, Norwich, NR1 2DQ



Norfolk Contemporary Art Society



Norfolk Contemporary Art Society, founded in 1956 and celebrating its 60th anniversary last year, is a charitable association that promotes the interests of contemporary art in Norfolk. It has acquired its own collection of paintings and sculpture, which form the basis of holdings in post-war art in the Norwich Castle Museum & Art Gallery.

ncas also raises funds for public sculptures and has an on-loan collection of local artworks.

Supporting local art in many ways, ncas mounts a lively programme of monthly events, mostly in Norwich, which include lectures by artists, critics and art historians, gallery visits, auctions, private views and parties. They also curate exhibitions, including the biennial open show, usually in The Forum. See photos of *ncas16* above.

Exhibitions, events and talks

Wednesday 11 October 2017, 7.30pm

Curve Auditorium, The Forum

TALKS ON THE RUSSIA SEASON:

ROYAL FABERGÉ & RADICAL RUSSIA AT THE SCVA

To mark the centenary of the Russian Revolution, the Sainsbury Centre for Visual Arts will stage two major exhibitions contrasting art, life and culture in Russia before and after the Revolution.

The first, *Royal Fabergé*, will explore the glittering saga of the world's greatest artist-jewellers during the decades preceding the First World War. The second, *Radical Russia*, shows how avantgarde artists – who had scandalised conservative society with outrageous and subversive work – briefly become the State's officially approved culture.

The guest curators, Ian Collins (*Royal Fabergé*) and Prof Peter Waldron (*Radical Russia*), will give us a privileged preview of the two shows that open later that week.

Members £2.50, non-members £4

The exhibitions will be open at the Sainsbury Centre from 14 October 2017 to 11 February 2018 – see page 41.

Wednesday 1 November 2017, 7.30pm

Curve Auditorium, The Forum

ANTONY GORMLEY AND THE UEA SCULPTURE PARK

A talk by Calvin Winner (Head of Collections, SCVA)





Friday 24 November 2017
 Viewing 6pm Auction 7pm
 City Hall, St Peter's Street, Norwich NR2 2PH
THE NCAS BIENNIAL CHARITY ART AUCTION

Every two years, *ncas* holds a charity art auction to top up its coffers to enable the Society to undertake more work in the region, championing contemporary art.

That time is round again, so please come to the lovely Art Deco council chamber at City Hall and bid as though there is no tomorrow. Not only will you support a very deserving cause but, if successful, you will be taking home with you the art masterpieces of the future to appreciate at your leisure – please bring your friends.

Free admission. Catalogue and details from the *ncas* website www.n-cas.org.uk

Friday 9 February 2018
 Weston Room, The Hostry at Norwich Cathedral.

JOHN MCLEAN: A film about the artist presented by Ian Collins and the film-maker Michael Proudfoot

John McLean is known to many Norfolk people as the artist who created the three new stained glass windows in Norwich Cathedral, which *ncas* helped to fund, but he is also an internationally renowned abstract artist of many years standing. Chris Morphet and Michael Proudfoot have recently made a wonderful 80 minute film about him.

Michael says '*John is suffering from Parkinson's Disease and this has slowed him up somewhat. Doctors' appointments, voice therapist appointments and travel difficulties have interrupted his love affair with painting but he is determined to carry on and with the help of his wonderful wife, Jan, he will. I hope he won't mind me saying that the slowing of his pace has helped us see what goes on with his work in our film; a bit like watching the replay of a great goal on Match Of The Day we can see the curve of the ball and the swell of the net when he scores*'.

Michael will introduce his film, along with Ian Collins who has written the definitive biography of this amazing artist. An evening not to be missed.

Admission £4 and £2.50 for members, on the door

For more details of events as they become available, as well as membership of *ncas* please visit the website



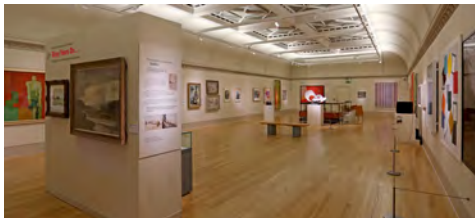
Alec Stevens setting up photo National Trust Paul Bailey

Continuing exhibitions

Castle Museum & Art Gallery

NCAS SIXTY YEARS ON...

Until 10 September please take the opportunity to visit ncas *Sixty Years On...* Over the past 60 years ncas has loaned, part-funded or gifted to the Castle Museum & Art Gallery many of the paintings and sculpture that form the basis of its post-war collection. This exhibition is in the Timothy Gurney Gallery and features most of the works that have been acquired by ncas.



Until Sunday 29 October 2017
Felbrigg Hall, Norfolk NR11 8PR

THE MAKERS AT FELBRIGG HALL

The National Trust, in partnership with Norfolk Contemporary Art Society, have appointed three artists for *The Makers*, a contemporary art residency and commission project resulting in an exhibition at Felbrigg Hall, Norfolk. Selected from hundreds of applicants, the three artists are Alec Stevens, Florence Kennard and Alida Sayer. The selected artists had the opportunity to be inspired by the Felbrigg estate, its house and grounds, during a week-long residency in October 2016. The work is installed as an exhibition throughout the summer.



Felbrigg Hall

Until Sunday 27 August 2017
Mannington Hall, Norfolk NR11 7BB

ABSTRACTED

Abstracted is installed in the café and grounds of Mannington Hall.



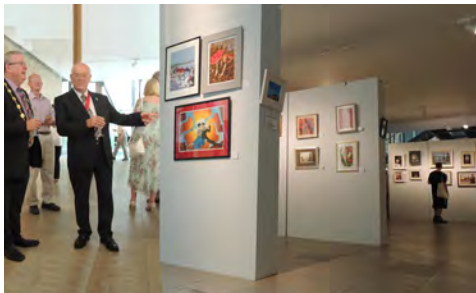
Bridget Heriz, *The Furies*

Artists shown indoors include Annie Brundrit, Rupert Mallin and Martin Battye, while Rose Davies and Bridget Heriz have sculpture shown outside.

Open Wednesdays, Thursdays, Fridays 11am to 5pm,
Sundays 12noon to 5pm.

For details see www.manningtongardens.co.uk

Norfolk & Norwich Art Circle



Opening of the 193rd Art Circle exhibition, Norwich Cathedral June 2017

Since its foundation in 1885, the Norfolk and Norwich Art Circle has been actively engaged in promoting the artistic endeavours of those in the region. We currently have some 200 members with interests ranging from sculpture to digital painting. To showcase their work we mount at least two exhibitions a year. In addition we offer a programme of hands-on demonstrations, talks, life-drawing sessions and social events as well as visits to studios, galleries and workshops.

For further information about the Art Circle's activities see our website www.nnartcircle.com

Exhibitions

Friday 15 to Sunday 17 September 2017
Brancaster Staithe, North Norfolk
**NORFOLK & NORWICH ART CIRCLE
EXHIBITION OF ART**

Monday 6 to Sunday 12 November 2017
The Forum, Norwich
**NORFOLK & NORWICH ART CIRCLE
194TH EXHIBITION OF ART**

ARTIST DEMONSTRATIONS

United Reformed Church, Ipswich Road
Non-members welcome, £3 on the door,
1.30–4pm

Saturday 23 September 2017
VIC BEARCROFT

Animal portraits, pastel demonstration

Saturday 28 October 2017
GARETH JONES

Marine art, pastel demonstration

Membership is £20 (£30 two at same address) per annum.
Contact jan.motley@btinternet.com Tel: 01508 495320

Whether you draw, paint, sculpt or have embraced the digital world or simply aspire to do any of the foregoing your application will be welcome.



*Catching the Light
by Sue Wilmer
(chair of NNArt Circle)*



*Hanging On
by Mary Almey*

Norwich Arts Centre



Anita Corbin

Norwich Arts Centre is a multi-arts venue, delivering a programme of live music, theatre, live art, comedy, live literature, visual art and Arts Awards.

Exhibitions are wheelchair accessible and free entry.

Please visit the website

www.norwichartscentre.co.uk for more details.

Box office 01603 660352

51 St Benedicts Street, Norwich NR2 4PG

Exhibitions

Wednesday 6 to Wednesday 27 September

NICK WARBURTON: OUTSIDE THE MYTHOS

An exhibition of new and retrospective works.

Opening Night Wednesday 6 September 5pm–7pm

Wednesday 4 October to Wednesday 25 October

MARCIA X: ECHOES BEYOND THE SEA

A showcase of black women creatives, including painting, film, poetry and performance. Themes include displacement, family and lineage.

Opening Night Wednesday 4 October 5pm–7pm

Wednesday 1 November to Wednesday 20 December

ANDI SAPEY: LANDSCAPES

Images from this popular Norwich-based photographer

Opening Night Wednesday 1 November 5pm–7pm

Wednesday 10 January to Wednesday 31 January

WILL TEATHER

Opening Night Wednesday 10 January 5pm–7pm

Wednesday 7 February to Wednesday 14 March

VISIBLE GIRLS: REVISITED

Exploring female subcultures with photographer, Anita Corbin.

Opening Night Wednesday 7 February 5pm–7pm

Gallery opening times: Monday–Friday 1–5pm,
Saturdays 10am–6pm. Free admission

Norwich 20 Group



Group exhibition in the Forum

The Norwich 20 Group has a firmly established regional art presence with active involvement by its selected members, including monthly discussion meetings and topical presentations by invited artists, members and licentiates.

After 70 years membership has grown to more than 80 artists which include painters, sculptors, installation & conceptual artists, printmakers and photographers. The group maintains a vibrant connection with the city's cultural life. This includes regular exhibitions, liaison with Norwich University of the Arts, weekly life drawing workshops and displaying large format and experimental works within its annual exhibitions.

Exhibitions and events

Friday 17 November 12-8 (bar 6-8pm) and
Saturday 18 November 10-5pm

The Chapel, 64 Park Lane, Norwich NR2 3EF

20 GROUP AFFORDABLE ART SALE

Come and buy original art from the group



Thursdays 7.30-10pm from 7 September 2017
(check website for term dates into 2018)

Riverside Studio, Wensum Lodge, King Street, Norwich

WEEKLY LIFE DRAWING WORKSHOP

Open to all, drop in at £5 a time (plus £5 termly fee),
students welcome.

Arrive earlier to set up, easels and boards provided, bring
your own materials.

**N20 Group host monthly open meetings at
Park Lane Chapel, Norwich on first Tuesday of the
month (except July & August) from 7.30pm**

Check website for details, free to attend and open
to all, please arrive in good time to get a seat.

Norwich Castle Museum & Art Gallery



Built by the Normans as a Royal Palace 900 years ago, **Norwich Castle** is now home to outstanding collections of fine and decorative art, archaeology and natural history.

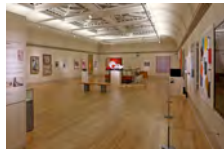
Alongside its own exhibitions Norwich Castle hosts a regular programme of touring shows from major galleries and museums including Tate, V&A, British Museum, the Hayward Gallery and many more.

The art programme at Norwich Castle is supported by the East Anglia Art Fund – a local charity dedicated to bringing great art to Norfolk.
www.eastangliaartfund.org.uk



Ongoing exhibitions

Timothy Gurney Gallery
Until Sunday 10 September 2017
NORFOLK CONTEMPORARY ART SOCIETY SIXTY YEARS ON...



Highlights from the Castle's Collection of acquisitions made by Norfolk Contemporary Art Society.
See page 23 for more details.



René Magritte
The Human Condition, 1935
Oil on canvas
© ADAGP, Paris and
DACS, London 2017

Saturday 1 July to Sunday 1 July 2018

MAGRITTE: THE LOST PAINTING

Discover the secret that René Magritte's painting *The Human Condition* concealed for 85 years – as seen on BBC TV.

Continues until Sunday 1 October 2017

NELSON AND NORFOLK

This major exhibition gathers together some of the most important objects connected to Admiral Lord Nelson.

Special Exhibition Galleries

Saturday 21 October 2017 to
Sunday 7 January 2018

REMBRANDT: LIGHTENING THE DARKNESS

Rembrandt Harmenszoon van Rijn (1606-1669) is one of the most revered artists of the European tradition. Although he principally earned his living from painting, he also produced 290 etchings throughout his life. By Rembrandt's time, prints were a popular means of reproduction – in his hand they became works of art in their own right. Rembrandt's early fame was as a printmaker rather than a painter and to this day he is widely considered to be the most accomplished etcher of all time.

This major exhibition showcases Norwich Castle's extraordinary collection of 93 prints and one drawing alongside loans from the British Museum, National Galleries of Scotland, National Gallery and Royal Collection. Rembrandt's preoccupation with light and shade can be seen throughout his work.



*Rembrandt Harmensz. van Rijn
Self-portrait Wearing a soft Cap,
full Face, Head only ('Rembrandt
aux trois moustaches') 1634
Etching
© Norfolk Museums Service*

This exhibition reveals how Rembrandt achieved unsurpassed effects of light and darkness purely through the combination of black lines and the white space around them.

Timothy Gurney Gallery

Saturday 23 September to Sunday 25 March 2018

WE CAME HERE TO CONQUER

We Came Here to Conquer showcases eleven contemporary artists working with print and printmaking. Over the course of the summer the artists have been exploring the print collection at Norwich Castle. Their commissioned responses will be presented in the exhibition alongside the museum's prints that date from the sixteenth century to the present day.



*Adam Bridgland,
Oh Lucy, Come See This
World With Me, 2017,
found photograph
with enamel paint and
transfer © the artist*



There is an admission charge to Norwich Castle and access to all galleries and exhibitions is included. You can visit the shop and café for free.

Special Exhibition Galleries

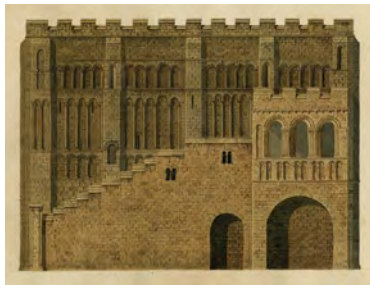
Saturday 10 February to Sunday 3 June 2018

NORWICH CASTLE: THE SQUARE BOX ON THE HILL

Standing atop the largest man-made mound in the country, Norwich Castle has dominated the City's skyline ever since the 12th century; but what is the story of Norwich's iconic and much-loved square box on the hill?

Built as a royal palace, Norwich Castle was a Norman showpiece with lavishly-decorated interiors fit for a king. By the 14th century, its walls conveyed power and authority as it became the County Gaol. After the relocation of the prison in the late 19th century, the Castle fell into a desperate ruin until its conversion into a public museum, which it remains to this day.

This exhibition illustrates Norwich Castle's rich history through a stunning mixture of prints, photographs, paintings, architectural plans, memorabilia and archives, many of which have never been on display before, as well as showcasing the latest exciting plans for the Castle's future as part of the HLF-funded *Norwich Castle: Gateway to Medieval England* project.



William Wilkins
(attrib.),
Norwich Castle
(east elevation),
1795,
watercolour on
paper
© Norfolk
Museums Service

Saturday 3 March to Sunday 20 May 2018

NORWICH CASTLE OPEN ART SHOW : INHERITANCE

In East Anglia, we live in a grand inheritance of architecture and landscape. Many of us treasure objects of personal inheritance that allow memory to endure, making tangible a connection with our ancestry. Less tangibly, we inherit traits, habits and traditions that are important elements of the way we live now.

Shown alongside *The Square Box on the Hill*, this selling exhibition will showcase recent work by Norfolk, Suffolk, Cambridgeshire and Essex artists addressing this theme of inheritance.



Supported using public funding by
**ARTS COUNCIL
ENGLAND**



*Inheritance is proudly
supported by Brown&Co.*

Norwich Cathedral



Located in the heart of Norwich in the beautiful Tombland area of the city, **Norwich Cathedral's Hostry Visitor and Education Centre** hosts a rolling programme of international, national and local exhibitions within the light and spacious exhibition hall.

As well as the exhibitions you can visit the awe-inspiring Cathedral, view the largest monastic cloister in England and enjoy the tranquillity of the Cathedral Close.

Exhibitions are in the **Hostry Visitor & Education Centre**,
Monday to Saturday 9.30am–4.30pm
Sunday 10am–3pm.

Exhibitions are open to all and admission is free.

Exhibitions

Friday 1 September to
Sunday 24 September 2017

BEASTS AND MORE BEASTS BY JO DAVIS TRENCH

This work is a visual dialogue with the religious and secular imagery of medieval church carvings. Jo Trench explores the form and symbolism of these demons, dogs, saints and lions, and their dual natures as demonstrated in the Bestiaries. The carvings are taken out of context, gathered, redrawn, distorted and re-imagined so that they inhabit new worlds.

Thursday 28 September to Sunday 15 October 2017
JERZY KONSTANTYNOWICZ

Norwich based photographer specializing in landscape photography.

Thursday 19 October to Saturday 28 October 2017
PAINT OUT NORWICH

As a part of the Hostry Festival, this exhibition will be the culmination of an ambitious and exciting live art experience to showcase the challenge of en plein air art creation. *See also page 7.*



*Jo Davis Trench 'Lust caught in a net',
Norwich Cathedral misericord.
(etching)*



Friday 3 November to Friday 24 November 2017

ART, CONFLICT AND RECONCILIATION: THE MURALS OF THE BOGSIDE ARTISTS

Unlike sectarian murals, the Derry/Londonderry *Murals of the Bogside Artists* were never designed as political propaganda, declarations of identity, or territorial markers. They are works of art that tell the stories of ordinary people as they lived through harrowing times, providing a safe space for reflection on sensitive issues. For more information see www.bogsideartists.wixsite.com/travellingexhibition

Thursday 30 November to
Tuesday 12 December 2017
**NORFOLK CONTEMPORARY
CRAFTS SOCIETY**

Norwich Cathedral again welcomes the Norfolk Contemporary Craft Society, established for over 40 years renowned both locally and nationally for its high quality and stylish work. This year, the exhibition will highlight the work of its newest members.



NCCS member Hazel Davidson

Saturday 16 December 2017 to
Sunday 14 January 2018
THE TENTMAKERS OF CAIRO

An exhibition of Egyptian textile art from the late 19th Century to the present day.

Please visit www.cathedral.org.uk for more details.



Norwich Print Fair

Now celebrating its 22nd year, the Norwich Print Fair once again brings together some of Norfolk and Suffolk's finest printmakers, displaying a wide variety of contemporary, hand made print techniques.

The Print Fair champions traditional methods such as mezzotint, etching, linocutting and wood engraving whilst also embracing newer practices such as screenprinting, gocco and collagraph, all within the unique historic setting of St Margaret's Church Gallery in St Benedict's Street.

From its inception, the Norwich Print Fair has sought to inform and inspire audiences showing the processes behind the creation of original prints.

This year the ever-popular 'Printmakers in Action Day' is on Sunday 10 September. Visitors are invited to observe the artists demonstrating their various techniques from 11am–4pm. This is a rare chance to witness new prints emerging from presses and screens and to see how it is done – and is not to be missed!



*St Margarets Church,
St Benedicts Street*

Monday 4 to Saturday 16
September 2017
Monday to Saturday 10am to 5pm
Admission free

THE 22nd NORWICH PRINT FAIR AN EXHIBITION OF ARTISTS' ORIGINAL PRINTS

St. Margaret's Church Gallery
St. Benedict's Street, Norwich

Open Portfolio Days:
Saturday 9 and Saturday 16 September

Printmakers in Action: Sunday 10 September
11am–4pm – artists demonstrating their techniques.

On Open Portfolio Days all the exhibiting artists will be present displaying extra, unframed work, sketchbooks and printing plates to illustrate their various techniques. The atmosphere is informal and friendly and everyone is happy to answer questions.

The Norwich Print Fair remains the largest independent selling show of its kind in East Anglia and was the winner of the 2015 Norfolk Arts Award – the Hy Kurzner 'Arts Entrepreneur's award.

www.norwichprintfair.co.uk



Little Dutch Cup, Vanessa Lubach



*Crabs and Shannocks
Paul Bommer*

Norwich Studio Art Gallery



Norwich Studio Art Gallery has been a part of the Norfolk art scene for over 10 years. Housed in a seventeenth century former butchers shop this small gallery is a colourful part of local life in Upper St Giles.

The gallery specialises in modern and contemporary fine art with a focus on Eastern European arts and crafts.

The Studio Art Gallery is open 10am to 5pm Wednesday to Saturday. If you are making a special journey please phone in advance to check.

77 Upper St Giles Street, Norwich NR2 1AB

Tel: 01603 492093 email: info@studioart.org.uk



Artist and curator Gennadiy Ivanov works prolifically from his studio in St Giles Street and at Outpost Studios in Gildengate as well as projects in public spaces. He loves painting people and his work is vibrant, large and strong.

He says '*My works are about the fragility of nature, humans and the World. I am inspired by nature and music. I capture the emotional and the intellectual energy of my vision to reprocess the structure of serendipity. I listen to and am influenced by my emotions and create a world that is a visual feast. This is a world that is resolved in colour, form, texture, and emotion.*'

For 2017 Gena has curated *The Art of Revolution* exhibition in the Undercroft from 5th to 30th September with invited artists, and is planning his own jubilee exhibition 'BEDLAM' for 2018 to celebrate his 50th birthday and 30 years professional work as an artist.





East Gallery^{NUA}, Denisa Ilie

East Gallery^{NUA} is a city centre public art space showcasing a programme of exhibitions by internationally recognised artists, curators and media practitioners. Exhibitions are accompanied by seminars and lectures delivered by specialists and curators, which enrich the University experience for students and those living and working in Norwich, as well as visitors to our city. East Gallery^{NUA} is funded by Norwich University of the Arts.

East Gallery^{NUA}, St Andrews Street, Norwich NR2 4AE

Tel: 01603 886385 www.nua.ac.uk/gallery

@eastgallerynua

Open Tuesday to Saturday, 12 noon to 5pm,

Admission free

Exhibitions

Wednesday 30 August to Saturday 7 October 2017

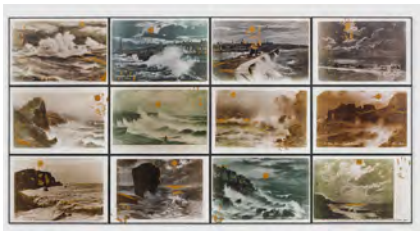
IN QUOTES: Collage and Assemblage in Contemporary Art

IN QUOTES will present works by an exciting range of contemporary artists working with collage in its broadest sense.

The exhibition includes new and existing pieces using postcards, books, altered photographs and illustrations. Artists such as Susan Hiller, John Stezaker and Cornelia Parker will be represented in the show.



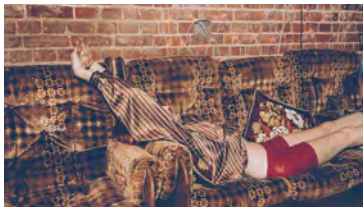
*John Stezaker, Mask
LXXXXI, 2007, Courtesy
The Approach, London.
Photo: FXP photography.*



Susan Hiller, Towards an Autobiography of Night, 1983,
© Susan Hiller; Courtesy Lisson Gallery. Photography: Jack Hens

Wednesday 18 October to Saturday 4 November 2017
NEW, NUA, NEWEST

This exhibition will showcase the very best of Norwich University of the Arts' graduates from the last five years and will include work from all subject areas covered by the University.



Kerry Curl, Untitled, BA(Hons) Photography,
Norwich University of the Arts, 2017

Tuesday 14 November 2017 to Saturday 6 January 2018
JERWOOD DRAWING PRIZE

The Jerwood Drawing Prize exhibition provides a platform to showcase the work of UK-based drawing practitioners, from student to established, and as a project helps to define a wider understanding of the role and value of drawing in creative practice.



Barbara Walker, Exotic Detail in Margin.
Image: Colin Mills.

See work from courses including COMMUNICATION DESIGN /
CURATION / FASHION / FINE ART / GAMES / MOVING IMAGE
AND SOUND / PHOTOGRAPHY / TEXTILE DESIGN

Norwich University of the Arts 2017 MA Degree Show



1 – 6 September 2017

Guntons Building, St Georges Street, Norwich, NR3 1BB

For more information and opening times visit
nua.ac.uk/madegreeeshow



SPONSOR OF NUA SUMMER EVENTS

ADNAMs.
SOUTHWOLD

#NUAmashow



@NorwichUniArts



norwichuniarts



norwichuniarts



OUTPOST



OUTPOST is an artist-run gallery, based in Norwich, committed to the uncompromising presentation of contemporary art. Since its founding in November 2004, OUTPOST has established itself as a leading centre for artist activity in the east of England.

Currently OUTPOST produces a core programme of seven exhibitions per year alongside a series of events, offsite projects, collaborations and commissioned artist editions.

OUTPOST Gallery, 10b Wensum Street, Tombland,
Norwich, Norfolk NR3 1HR Tel: 01603 612428

Since occupying Gildengate House on Upper Green Lane in 2009, OUTPOST has converted the large open plan interior of the former office block into affordable artist studio spaces. The studios accommodate around 85 Norwich-based artists, ranging from recent graduates to internationally exhibiting practitioners. As well as housing studio spaces, Gildengate House acts as a satellite venue for OUTPOST's additional exhibition and events programme, hosting residencies, artist talks, film screenings and performances. OUTPOST operates a membership scheme and receives support from Arts Council England.

At Tombland, OUTPOST Gallery

Thursday 27 July to Sunday 20 August 2017

CASPAR HEINEMANN : DISTANT CLINICAL ENTITY

Thursday 7 September to Sunday 1 October 2017

JENNA BLISS : POISON THE CURE

Thursday 9 November to Sunday 17 December 2017

OUTPOST MEMBERS' SHOW selected by Andy Holden

For updates follow OUTPOST on Facebook, Instagram and Twitter. Enquiries email questions@norwichoutpost.org

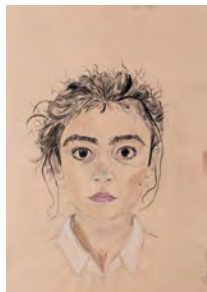
OUTPOST Studios, Gildengate House, 1 Upper Green
Lane, Norwich NR3 1AX.

Royal Drawing School



The Royal Drawing School is an independent, not-for-profit resource that aims to raise the standard and profile of drawing through teaching and practice. It is one of only a few institutions in the world offering in-depth, quality tuition in drawing from observation.

Drawing is a primary language natural to all human beings, and fundamental to all aspects of learning and thinking from childhood onwards. It is a crucial route to innovation across the creative disciplines and beyond, from fashion, fine art and animation to filmmaking, product design and engineering. For some people, drawing is the easiest way of thinking.



Lila 14 years



By offering tuition and resources to art students, artists, children and the public, it aims to address the permanent need for high-quality drawing teaching in the UK, filling a gap left by the steady erosion of observational drawing from the study of art in higher education and in schools.

Founded in 2000 by HRH The Prince of Wales and artist Catherine Goodman as The Prince's Drawing School, it became the Royal Drawing School in 2014.

For more information visit royaldrawingschool.org or phone 020 7613 8568

Saturday Young Artists programme at Lion House, Muspole Street, Norwich

The Royal Drawing School offers weekly sessions in 10-week terms in Norwich at a 1st floor studio in Lion House, St George's Works, Muspole Street.

The clubs are for young people who have a passion for drawing and want to learn and improve their skills. The morning Drawing Club is for 10–14 year olds, and new for autumn 2017 are the afternoon Young Associates sessions for 15–18 year olds.

Regular drawing at any age can enhance focus and concentration and increase self-esteem, and this can be especially beneficial for school-age children. The Young Artists programme helps children retain and develop their drawing abilities and sustain their enthusiasm for self-expression within an artist-led environment.

The skills learned can also support students' pursuit of a wide range of creative subjects in school, further and higher education, and open doors to careers in the arts, design, architecture, and science.

The Young Artists programme is led by professional artists who are alumni of the Royal Drawing School's postgraduate programme.



Sam, 13 years



SATURDAY YOUNG ARTISTS SESSIONS IN NORWICH Drawing Clubs (10–14 yr olds) and Young Associates (15–18 yr olds) at Lion House, St George's Works, Muspole Street, Norwich NR3 1DJ

Autumn term: 30 September to 2 December 2017

Spring term: 20 January to 24 March 2018

11am–1pm and 2.30–4.30pm

Price: £150 for 10 sessions

Scholarship places are available for low-income families. Please apply using the application form on www.royaldrawingschool.org

For more information and to book online, visit: www.royaldrawingschool.org/courses/young-artists/regional-courses or phone 020 7613 8559

Sainsbury Centre for Visual Arts



The Sainsbury Centre for Visual Arts is one of the most prominent university art galleries in Britain, and one of the nation's principal centres for the study and presentation of art. Designed by acclaimed architect Norman Foster, it is one of the most important buildings of the late twentieth century.

The Centre owes its existence to the generosity of Robert and Lisa Sainsbury who donated their extraordinary art collection which includes works dating from prehistory to the present day from across the globe. Alongside sit two further important permanent collections: *The Anderson Collection of Art Nouveau*, donated in 1978 by Sir Colin Anderson; and the *University Collection of Abstract and Constructivist Art, Design & Architecture* established by the University in 1968.

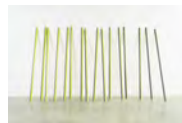
The permanent art collections are displayed across the ground floor of the building whilst on the lower level is a magnificent set of galleries, providing the largest temporary exhibition space in the East of England. The Sainsbury Centre offers an award-winning learning programme of gallery talks, lectures, and art workshops.

Open Tuesday–Sunday, admission to the building and permanent collection is free. Special exhibitions are subject to charges. For more information and bookings visit www.scva.ac.uk

Special exhibitions

Until Sunday 1 October 2017

RANA BEGUM



Rana Begum is one of the most exciting artists working in Britain today. She has completed commissions in Dubai, Cambridge, and King's Cross in London.

Begum's practice blurs the boundaries between sculpture, painting and architecture. It engages art movements of the past such as Minimalism and Constructivism and, at the same time, is fresh and relevant for today. She has been awarded the prestigious Abraaj prize, Art Dubai 2017.

Her use of space, colour and form transforms the Mezzanine Gallery with an immersive installation and wall-mounted reliefs, taking full advantage of the light and space of Norman Foster's architecture.

£7/£6 concessions/ Free for Sainsbury Centre members and Student members

Saturday 14 October 2017 to

Sunday 11 February 2017

THE RUSSIA SEASON : ROYAL FABERGÉ AND RADICAL RUSSIA

To mark the centenary of the Russian Revolution, the Sainsbury Centre for Visual Arts will stage two major exhibitions contrasting art, life and culture in Russia before and after the Revolution.

The first, *Royal Fabergé*, will explore the glittering saga of the world's greatest artist-jewellers during the decades preceding the First World War. The second, *Radical Russia*, will show how avant-garde artists – who had scandalised conservative society with outrageous and subversive painting, poetry and theatre – came to briefly become the State's officially approved culture. Ultimately both high points of human artistry were to be laid low by horror and terror.

The Sainsbury Centre's *Russia Season* will be completed by the permanent installation of the dramatic model of Tatlin's Tower conceived as the most iconic architectural project of the Soviet era, though never built. With an immense impact on subsequent architects and designers, not least the architects of the University of East Anglia, the 10-metre tower will now rise in the sculpture park alongside the Sainsbury Centre.

£12/£10.50 concessions/Free for Sainsbury Centre
Members and Student Members



Left: Fabergé. Gold Ginkgo
leaf, blue enamel and
diamond cigarette case. c. 1910,
A La Vieille Russie, New York

Right: Detail from
El Lissitzky, *The four
fundamental ways of
arithmetic*. 1928.
Van Abbemuseum

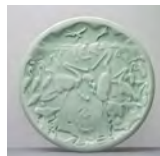


18 November 2017 to 3 April 2018 ROGER LAW : FROM SATIRE TO CERAMICS

Renowned for co-creating the hit 1980s/'90s television series *Spitting Image* with Peter Fluck, Roger Law has been a seminal British artist and cultural commentator for the last four decades. He has since become a major ceramic artist, and a pioneer figure in his work in Jingdezhen, the greatest of the Chinese porcelain centres.

Roger Law : From Satire to Ceramics explores the full range of Law's extraordinary career in an exhibition that views his artistic and intellectual formation, and the successive environments he worked in.

[See website for ticket prices](#)



Charger, Roger Law
Sainsbury Centre



Margaret Thatcher,
photograph by
John Lawrence Jones,
Spitting Image Archive

The South Asia Collection Museum and Shop



The Old Skating Rink Gallery

A unique collection of South Asian decorative arts housed in a Victorian architectural gem, a restored skating rink in the city centre.

South Asian arts and craft objects (woodwork, metalwork and textiles) are displayed together with a range of traditional furniture, architectural features, paintings and prints.

Close to the Forum and the market, the historic building on Bethel Street is also home to Country and Eastern, an emporium with decorative furnishings and gifts direct from South Asia.

Exhibitions

Highlights from the permanent collection are exhibited in regularly changing displays, including a gallery space which hosts exhibitions of paintings and prints from the 18th century, through to contemporary works.



Elephant With A Rider. Bandni Devi. 2003

Free entry.

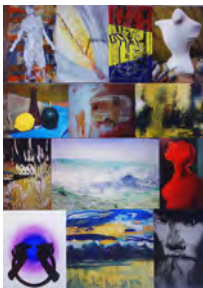
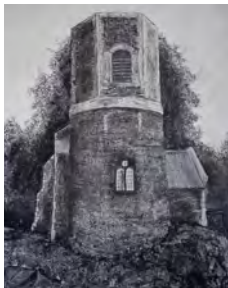
Open daily except Sundays and bank holidays,
9.30am–5pm

For more details or to arrange tours, please contact:
The Old Skating Rink Gallery, 34–36 Bethel Street,
Norwich, Norfolk NR2 1NR

Tel: 01603 663890 Email: info@sadacc.co.uk
www.sadacc.co.uk



St Etheldreda's Artists' Studios



St Etheldreda's Artists' Studios is housed in the beautiful church of St Etheldreda, opposite Wensum Lodge in King Street. It is the longest running artists' studios in the city in one of the city's oldest streets. Currently twelve members have working spaces in the church.

Every first Saturday of the month the studios are open from 12 to 4pm to show an exhibition of fresh work by one of the member artists. All are welcome.

St Etheldreda's Artists Studios, King Street,
Norwich NR1 1QH. Telephone 01603 631928
Contact: Linda Chapman, lindachapman49@hotmail.com

Exhibitions

Saturday 9/Sunday 10 September 2017
10am-5pm

HERITAGE WEEKEND : Group show

Open Studio Saturdays 12-4pm

2 September : GROUP SHOW

7 October : FLISS CARY

4 November : CORA SHEARING

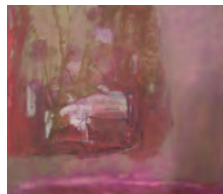
2 December : CHRISTMAS OPEN

STUDIOS : Group exhibition

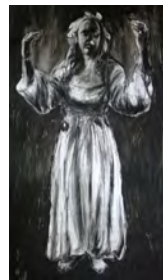
3 February 2018 : GROUP DRAWING SHOW

3 March 2018 : FRANCES MARTIN

[See St Etheldreda's Facebook page for more information](#)



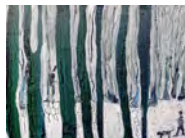
Fliss Cary



St Etheldreda by Frances Martin



Don't Blame the Roses by Viv Castleton



Jude Chaney

Theatre Royal Norwich



Theatre Royal Norwich hosts four exhibitions each year by prominent, professional artists from the region. The exhibitions are kindly sponsored by Targetfollow Estates Ltd. and curated by Sarah Cannell.

The work is displayed in the Adnams Circle Bar on the first floor at the Theatre Royal.

All work can be purchased from the box office and the exhibitions are open 9.30am–6pm, Monday to Saturday.

Theatre Royal, Theatre Street, Norwich NR2 1RL

Email: sarah.cannell1@gmail.com

Exhibitions

Friday 28 July to Monday 2 October 2017

SALLY HIRST : PAST, PRESENT, IMPERFECTIONS

Sally Hirst is widely known for her images of the urban environment and industrial architecture. She has spent the past year immersing herself in the architectural and industrial history of Norwich and creating this series of painting, prints and collages as a response to her research.

The work reflects the texture, architecture, signage and structures of the city. Her sensitive depictions fall between abstraction and realism and invite you to question what still exists and what has gone before; buildings you will recognise are depicted alongside those that now only exist in old photographs. Through the layers of information and meaning, transparency and opacity, ambiguity and nuance these images aim to inform and enrich your understanding of our fine city.





Mollie Smith



Chloe Linder

Wednesday 4 October 2017 to Tuesday 16 January 2018 HELLEDON HIGH SCHOOL

An exhibition of work produced by Hellesdon High School A-level Photography students. Year 12 and 13 students have been exploring a wide variety of themes within their studies, ranging from representations of masculinity and femininity to idealistic views of the 1950s.

It is a great honour for the students to be able to show their work at Norwich Theatre Royal where it will be seen by a large audience. The variety of work and the level of photographic skill on show is testament to the hard work demonstrated by all of the students involved; they should be very proud of themselves!

Friday 20 October to Sunday 24 January 2018

NICOLA SLATTERY, RBA

Nicola Slattery works with her imagination, feelings and emotions as a painter and printmaker. Her paintings are in public, private and corporate collections around the world. She was elected to the Royal Society of British Artists (RBA) in 2015.



Nicola Slattery, Travelling Troupe

A prolific, well known painter and printmaker, she has exhibited regularly and widely for many years in solo and group exhibitions across the UK and beyond. Painting with acrylic on wood or printmaking using the drypoint and collagraph techniques, Nicola Slattery creates figurative narrative images from imagination.

Her paintings have enjoyed wide audiences and favourable reviews. They have been included in many selected exhibitions including those with: New English Art Club, Royal Society of British Artists and the Royal Academy Summer Exhibition.

www.theatroyalnorwich.co.uk

Follow on Twitter: <http://bit.ly/bpHQcw>

Follow on Facebook: <http://on.fb.me/aduaus>

Exhibition programme supported by



Shoe Factory Social Club, St Mary's Works, St Mary's Plain, Norwich and Lion House, St George's Works, Muspole Street, Norwich



Two new areas of the city have become hotspots for creative development. Owned by development company Architekton, the Shoe Quarter occupies the two sites at St Mary's Works and St George's Works on either side of Duke Street and bounded by the ring road, Oak Street, St Mary's Plain, Muspole Street and Colegate are destined for a mixed use development to be built over the next ten years.

In the meantime, some of the buildings awaiting development have been offered to artists and creative groups. The ground floor of St Mary's Works is the Shoe Factory Social Club, available for film showings, performances, exhibitions and shows that need space until the end of 2017.



Lion House in Muspole Street is now a home for artists and makers: Norwich Hackspace – a member-led maker space, Artpocket, Geneality Art, Salt Glass Studios, TheWorkroom & Aviva Leigh Creative Textiles, artist Suzanne Antonelli and ceramicist Ali Hewson. The Royal Drawing School runs Saturday drawing sessions for young people (see pages 38/39) and many of the artists will be running courses in drawing, painting, printing, crafts, textiles and dyestuffs for all ages.

For more information on the Shoe Factory Social Club
see www.shoefactorysocial.club

For information about Lion House
email info@norwichhackspace.org
or see www.lionhousestudios.co.uk



LION HOUSE
St George's Works, Muspole Street

THE UNDERCROFT GALLERY

The Undercroft is a raw and robust space tucked away at the back of Norwich Market, under the Memorial Gardens in front of City Hall.

Owned and managed by Norwich City Council, it is made available for artists and groups to curate exhibitions at a minimal charge – contact clarehubery@norwich.gov.uk

The entrance is tucked away down a set of steps – it is Norwich's stunning secret venue

EXHIBITIONS AUTUMN 2017

5 to 30 September : The Art of Revolution
curated by Gennadiy Ivanov

In October : UNA Gallery

4 to 10 November : Balance : invited artists
curated by Raymond Noakes

17 to 21 November : Richard Shepherd

As the Undercroft is unheated there are generally no exhibitions in the winter months. For times, updates and extra exhibitions see:

www.artinnorwich.org.uk/the-undercroft



The Art of Revolution



The Art of Revolution is the fourth exhibition curated by Norwich-based artist Gennadiy Ivanov in the Undercroft in Norwich. Originally from Belarus, Gennadiy makes full use of his international connections bringing together a wide range of professional artists tackling a political theme.

This exhibition is dedicated to the 100th anniversary of the Bolshevik October Revolution and explores its significance and cultural legacy. This will be expressed through industrial art, social art, fine art, music, film, theatre, fashion, performance, design, sex and political activism.

Contact info@studioart.org.uk 01603 492093

5 to 30 September 2017, daily 11am–5pm
The Undercroft, St Peter's Street, Norwich
THE ART OF REVOLUTION 1917–2017

organised and curated by Gennadiy Ivanov
with the following artists: Alexandra Blythe, Andrew Jay, Andy Hornett, Deanna Tyson, Elena Nikiforova, Gennadiy Ivanov, Glenn Goring, Frances Martin, Helen Wells, John Sparks, Julia Cameron, Linda Johnson, Martin Swan, Monika Wesselmann, Natasha Day, Peter Offord, Richard Cleland, Rob Bellman, Robert Nairn, Simon Marshall, Sophia Shuvalova, Sue Law, Tanya Goddard, Viv Castleton.

Events and performances as part of Art of Revolution

- 04.09 : Opening in Undercroft including performances of Concrete Poetry (Helen Wells) and dance (Aleksey Ustin)
- 05.09–14.10 : The Greenhouse Trust : *Art of Revolution*
- 11.09–16.09 : The Forum : *Art of Revolution* exhibition
- 18.09 : Professor Lynda Morris lecture : *Women, Empire & Revolution* in City Hall Council Chamber 6pm
- 23.09 : *The Big Draw Revolution* : 12–4pm, The Undercroft
- 23.09 : *Edwin Pope aka Mutant Vinyl* : Contemporary jazz-style concert in The Undercroft 5pm
- 05.09–04.10 : Bang & Olufsen : *Art of Revolution* : paintings, design, sound, music with Edwin Pope at the PV.
- 17.10–30.10 Anteros Arts : *Art of Revolution*

The Socialist Revolution in Russia brought radical approaches in art to the world. This series of associated events and exhibitions marks the centenary across Norwich



Balance

INVITED ARTISTS

CURATED BY RAY NOAKES

4th-10th November

11.00-17.00

OPENING 3rd November

18.00-21.00

UNDERCROFT GALLERY

NORWICH

NR2 1NE

PAINTING OVER ART

NEW PAINTINGS

Richard Shepherd

17th-21st November

11.00-17.00

OPENING 16th November

18.00-21.00

UNDERCROFT GALLERY

Norwich NR2 1NE

StudioDo Ceramics Studio



StudioDo is a small ceramics studio created by Marion and Scott Stuart which aims to offer people of all abilities and experience access to the rewards of making things in clay. So you can come and DO at StudioDo!

Set up in 2011 at Anderson's Yard, an enchanting courtyard, hidden away off the Unthank Road, we have a range of facilities across four spaces with wheels and kilns for use by classes or StudioDo members.

There are two ways to get involved with StudioDo – evening classes and workshops for the uninitiated to the expert and membership which offers open access.



Evening classes run on Tuesday and Wednesdays 6-8pm term time. Firing and clay included.

Membership is available to skilled ceramicists who can use the studio facilities when they need them, bridging the gap between evening classes and having their own space.

If you are interested in membership, get in touch via our website. Membership is by application and interview.

We also offer individual, small group tuition on throwing and will take group bookings, (enquire via our website). Our tutors hold full teaching qualifications and a broad range of skills in both ceramics and art.

Find out more and book your place on our website
www.studiodo.co.uk

Homage to Sir Thomas Browne



About Sir Thomas Browne

Have you ever wondered about the sculptures on Hay Hill in the middle of Norwich? The marble brain and eye, two polished seed pod kind of things, some rough granite stools and tables and five tombstone-like seats?

Well, they are a Homage to Sir Thomas Browne, a 17th century polymath who lived where Pret a Manger is now and is buried in St Peter Mancroft Church. There is a statue of him on Hay Hill, holding a burial urn.

In his day, Browne was very influential as a doctor, a scientist, a thinker and a religious man. He is often referred to as 'curious' and he wrote about his thinking and experiments in several well-read books. He spent his spare time running experiments and 'debunking' myths, or fake news as they would be now. He also invented many words common in our language.

Sir Thomas Browne Day Thursday 19 October 2017



Statue of Sir Thomas Browne by Henry Pegram unveiled 1905

The sculptures are dedicated to Browne and refer to him or his literary works. They were commissioned 10 years ago, made by French artists Anne & Patrick Poirer and were formally opened on 4 July 2007 as a 'living room' for the city – somewhere to sit and ponder the world.

Browne died on his birthday, 19 October, which has been declared Sir Thomas Browne Day to celebrate this modest but interesting man, and to stimulate 'Brownean' type projects – encouraging us to think about and explore our environment and what is going on around us.

Thursday 19 October and in the days around, there will be a number of events to celebrate his life and work including an exhibition of books at the Forum Library, a talk, a performance and some experiments!

Keep updated by checking the website
www.sirthomasbrowne.org.uk

North of the City – take a walk



The north of the city is rapidly becoming becoming a hot-spot for new artists and creative businesses.

Around Duke Street, Anglia Square, Pitt Street, Magdalen Street and St Augustines there is a new wave of artist-led regeneration. In all cities there is an area which gets a bit run down and property is left empty. As values drop, it becomes feasible for artists and start-up businesses to rent space. In some cases, enlightened developers allow artists to have spaces for 'meanwhile use' until areas can be redeveloped such as St Mary's and St George's Works just off Duke Street where the Shoe Factory Social Club and Lion House are accommodating artists and creative uses.

New galleries and spaces have popped up in Magdalen Street, as well as Nunnsyard, Yallops and Thirteen(a) in St Augustines Street and Print to the People, Men's Shed in Pitt Street.

Norwich Hackspace, Artpocket, the Royal Drawing School, Bev Coraldean and other artists have settled into Lion House Studios in Muspole Street, right opposite the Muspole Street Studios which has accommodated artists and potters for many years. Many of the studios in this area offer hands-on sessions in printmaking, pottery, drawing, textiles, illustration and painting.

Member-led group OUTPOST has run a gallery in Tombland for over 10 years and also manages around 80 artist studios in Gildengate House in Anglia Square. These all give opportunities to emerging artists, students and creatives of all ages.

As well as galleries and art spaces, there are vintage shops, makerspaces and artist shops, ethnic foods, and antiques and collectables in dig-around caverns where you will find interesting bargains and artefacts.

Take a walk along Magdalen Street and find Anteros Arts, North Café, Looses, Aladdins Cave, the Make Place and much more.

So this is definitely an area of the city to have a poke around in and explore – please do!

A quick guide to art in Norwich



View of Norwich from City Hall towards Norwich Castle

Norwich is a medieval city which, in its hey-day, rivalled London in terms of size and was, for many years, England's second city, being only 100 miles from the court of London. It was a wealthy city with its fame built on the textile trade, weaving and particularly wool. Nearly half of the population was French, Dutch or Flemish and engaged in the weaving trade – hence the name of the football club, the Canaries, called after the birds which the weavers kept for company.

In the Industrial Revolution, Norwich was off the beaten track for commerce and transport and so attracted artists, philosophers and radical thinkers, and was home to the famous Norwich School of Painters. Many religious non-conformists also settled here and the place became a hotbed for artists and writers, as it is today. It is also now a UNESCO City of Literature.

Amongst its many cultural assets Norwich can claim:

Norwich University of the Arts, one of the best universities for courses in animation and film, fine art and illustration, architecture, games design, graphic design, fashion, media and much more, including East Gallery^{NUA} in St Andrew's Street.

Norwich Castle and the Sainsbury Centre for Visual Arts – world-class venues, attracting national-level touring shows, with permanent collections of World Art as well as work by Picasso, Henry Moore, Francis Bacon, Modigliani, Degas and local masters – Munnings and the Norwich School of Painters including contemporary work from artists such as Colin Self.

Norfolk and Norwich Festival in May, an international multi-arts annual festival with 17 days of concerts, outdoor arts and theatre, both mainstream and left-field, as well as the Norfolk & Norwich Open Studios. Norwich Arts Centre is a multi-arts venue with a visual art programme which includes live art, photography and digital art and Norwich Cathedral has an events programme with a regular cycle of exhibitions in the Hostry as well as the Hostry Festival in September and October.

There are a number of artist-led galleries and studios, notably OUTPOST, Anteros Arts Foundation, Dyad, Fairhurst, Yallops, Nunnsyard and St Etheldredas – and some well-established and active artists' groups such as Norfolk Contemporary Art Society, Norwich 20 Group, SAVORR and the Lonely Arts Club.

Venues such as the Forum, Norwich Arts Centre and St Margaret's Church all support artists and host exhibitions along with several commercial galleries such as Art 18|21 and Mandell's. As well as Art in Norwich partners, there are over 900 practising visual artists and groups in Norfolk and a thriving underground arts scene in addition to the main institutions. www.artinnorwich.org.uk

OUT OF TOWN



Road to Great Yarmouth Photo Marion de Mello Catlin

ART IN NORFOLK

Norwich is set in the county of Norfolk. It is the centre of a busy rural hinterland, varied and beautiful. Because there is space, there are over 800 visual artists working here and it has a long history of being a creative place. And the skies, the light and the landscapes have been an ongoing source of inspiration too. In the following pages you will find some of the many galleries and exhibitions out and about in the county.

For more, check local tourist information, the National Trust properties Felbrigg and Blickling, Houghton Hall, Mannington Hall and the market towns of Wymondham, Loddon, Harleston and Diss to the south, Holt, Aylsham, Reepham, Cromer, Sheringham, Blakeney to the north, Great Yarmouth and Lowestoft to the east, Kings Lynn to the west.

One of the highlights, until 26 October, is 'Earth Sky: an exhibition of work by Richard Long' at Houghton Hall near King's Lynn and if you fancy some non-art time, you can't beat the Norfolk coastline, the Brecks and the famous Norfolk Broads.

Explore Norfolk – you will get hooked!

WHERE TO GO IN NORFOLK

As well as exhibition venues listed in this booklet we have included other locations of interest and that often have exhibitions. The whole Norfolk coast is beautiful and varied and the coast road offers splendid views over saltmarshes and beaches. The north coast is especially good for bird watchers, seals, sailing and fishing.

A drive along the coast will take you through many picturesque villages with galleries and craft shops. Inland, market towns are also local hubs of activity. To the west and south are the Brecks – open heathland and forests.



KEY

- 30 Bircham Gallery, Holt
- 31 Felbrigg Hall, Felbrigg
- 32 GroundWork Gallery, King's Lynn
- 33 Houghton Hall, King's Lynn
- 34 Harleston & Waveney Arts
- 35 Norfolk Wildlife Trust at Cley Marshes Visitor Centre
- 36 Pocock's the Artmonger, Burnham Market
- 37 Waveney Valley Sculpture Trail @Raveningham Centre
- 38 St Nicholas' Church, Salthouse
- 39 Wymondham Arts Centre
- 40 Mannington Hall & Gardens
- 41 St Margaret's Church, Cley-next-the-Sea
- 42 Time & Tide Museum, Great Yarmouth
- 43 The Gallery Norfolk, Cromer

Other places to visit:

Barrington Farm Outsider Art Gallery

Loddon Arts Centre, Loddon

Gunton Arms – a pub with a great private art collection and fantastic food

Holt – a Georgian market town with galleries and bookshops

Salt Glass Studios at Burnham Overy.

Wells, Sheringham, Blakeney and Cromer are all lovely for a day out as is the whole Norfolk coast – see www.visitnorthnorfolk.com

See page 54 for a map of Norwich venues and contact details

Bircham Gallery, Holt



Bircham Gallery, Holt

Light and spacious gallery situated on the Market Place in the Georgian town of Holt in north Norfolk. The gallery stocks the work of over 200 artists and craftspeople, displaying a superb collection of unique and beautiful art from East Anglia and beyond. Our innovative exhibition programme includes the work of established contemporary artists, acclaimed modern masters and emerging new talent.

14 Market Place, Holt, Norfolk NR25 6BW
Admission free, open 9am-5pm Monday-Saturday,
10am-4pm Bank Holidays
T: 01263 713312 Email: info@birchamgallery.co.uk

Exhibitions

9 September to 4 October 2017

CHRIS PROUT Paintings

RACHEL WOOD Ceramics

Paintings and ceramics inspired by landscape with energy, atmosphere and texture.



Late Summer Sunshine, Chris Prout

7 October to 1 November 2017

JOHN NEWLAND Paintings

SARAH PURVEY

Sculptural Ceramics

Paintings of the north Norfolk coast together with monumental handbuilt ceramics.



Fringe, ceramic, Sarah Purvey

4 November to 10 January 2018

CHRISTMAS EXHIBITION

Part 1: 4-29 November 2017

Part 2: 2 December-10 January 2018

Two great collections of work for Christmas from selected artists.

13 January to 21 February 2018

PRINTMAKERS

A selection of works in print from our many exceptional printmakers.

Lieta Marziali Art Jeweller



Three Norfolk Mourning Brooches

Lieta Marziali is an art jeweller based in Holt, north Norfolk. Narrative and reflection are the driving force behind her thinking and her work is often centred around themes of identity and self-awareness, transformation and growth.

Her practice is slow and mindful and grounded in strong ethical principles of environmental and social responsibility. Her materials are almost entirely gathered, recycled or reclaimed and her processes intentionally low-tech.

Lieta creates mainly one-off pieces and, occasionally, small series. Her work has been published and exhibited nationally and internationally.

Open Studio 2017

Weekends 2-3, 9-10, 16-17, 23-24 December
11am-4pm. Other visits by appointment.

Workshops

Weekend 9/10 September 2017, 10am-4pm
at Cromer Museum, Cromer
FORGE AND FORGE
Booking through Cromer Museum
call 01263 513543.

Bespoke workshops

Lieta is also available for private workshops either at her studio (max 3 people at a time) or at your venue.

Children's learning events, including home-ed sessions. Small group object- and making-based activities, ideal for groups of friends or corporate away days.

Lieta aims to be as inclusive as she can, so please contact her to discuss concessions. Fully insured and DBS checked.

Satnav NR25 6DF
www.lietamarziali.co.uk
info@lietamarziali.co.uk
07718 585025

Follow Lieta on Facebook, Twitter and Instagram



Above: Neckpiece from 'I Am. Again. I Am.' Below: Improvisa (neckpiece, detail)



Fire and Ice Gina Glover Jessica Rayner

An artistic examination of climate change, some of its causes and dramatic effects

Gina Glover is founder of Photofusion, and her interests have ranged from biomedical imagery to the study of environments affected by human conflict and economic development.

Jessica Rayner makes dramatic images of the energy of phenomena within nature and environment. The artists are mother and daughter.

14 October - 16 December

Also Upstairs at GroundWork...

Small works of art and jewellery

by Liz McGowan, Linda McFarlane,
Kirsten Sonne, Tina McCleod,
Sheila Churchill, Lieta Marziali

GroundWork Gallery+Shop

Open Tuesday-Saturday 11.00-4.00

17 Purfleet Street King's Lynn PE30 1ER Norfolk

T 01553 602222 E mail@groundworkgallery.com

groundworkgallery.com

The gallery for art+environment

GroundWork

Create by the Coast



Explore natural Great Yarmouth landscapes with playful creative activities for all ages. Make on-site spontaneous art at outdoor sites from found natural materials with a family-friendly imagination-led approach. The project is devised and led by artist Genevieve Rudd and is supported by Norfolk County Council's Arts Project Fund. Follow the project online via #createbythecoast.

Create by the Coast sessions & exhibition

Sessions are on Saturdays 29 July, 12 August and 26 August from 2pm to 4pm at Great Yarmouth beach, Gorleston Priory Gardens and Great Yarmouth Minster respectively.

Tickets cost £5 per person or £15 for a family/group of 4. If you'd like to come along to a session, book your space in advance by contacting Genevieve via email: hello@genevieverudd.com or visit: www.genevieverudd.com.

Exhibition

Following the project, there is an exhibition of the *Create by the Coast* artwork at Great Yarmouth Library

4 to 9 September, open 10am to 4pm daily
Great Yarmouth Library, Tolhouse Street, Great Yarmouth Norfolk NR30 2SH

There will be a celebration event open to all on **Wednesday 6 September from 5pm to 7:30pm.**



Art in Norwich members and venue details

- 1 Anteros Arts Foundation, 7–15 Fye Bridge Street, NR3 1LJ
Tel: 01603 766129 www.aterosfoundation.com
- 2 Create Norwich, Old Church Hall, The St, Trowse Newton,
Norwich NR14 8SX www.createnorwich.co.uk
- 3 Crypt Gallery, Norwich School Chapel, The Close, Norwich
NR1 4DD Tel: 01603 728430 www.norwich-school.org.uk
- 4 Dove Street Studios, Dove Street & Barber Shop Gallery,
Magdalen Street, Norwich www.dyad-creative.com
- 5 East Gallery^{NUA}, St Andrew's Street, Norwich NR3 1BB
Tel: 01603 886385 www.nua.ac.uk
- 6 Fairhurst Gallery, Bedford Street, Norwich NR2 1AG
Tel: 01603 614214 www.fairhurstgallery.co.uk
- 7 The Forum, Millennium Plain, Norwich NR2 1TF
Tel: 01603 727950 www.theforumnorwich.co.uk
- 8 The Gallery Norfolk, 60 St Giles Street, Norwich NR2 1LW
Tel: 01603 761900 www.thegallernorfolk.co.uk
- 9 Greenhouse Gallery, 42–46 Bethel St, Norwich NR2 1NR
Tel: 01603 631007 www.greenhousetrust.co.uk
- 10 Hudson Gallery, 37 St Andrew's St, Norwich NR2 4TP
Tel: 01603 766220 www.hudsonarchitect.co.uk
- 11 Mandell's Gallery, Elm Hill, NR3 1HN
Tel: 01603 626892 www.mandellsgallery.co.uk
- 12 StudioDo, Anderson's Yard, Unthank Rd, Norwich NR2 2PE
www.studiido.co.uk
- 13 Norwich Arts Centre, St Benedicts Street, NR2 4PG
Tel: 01603 660352 www.norwichartscentre.co.uk
- 14 Norwich Castle Museum & Art Gallery, Norwich Castle,
Castle Hill, NR1 3JU Tel: 01603 493625 (Mon–Fri)
www.museums.norfolk.gov.uk
- 15 Norwich Cathedral, The Close, Norwich NR1 4EH
Tel: 01603 218300 www.cathedral.org.uk
- 16 Norwich Studio Art Gallery, 77 Upper St Giles St, Norwich
NR2 1AB Tel: 01603 492093 www.studioart.org.uk
- 17 Nunnsyard, Yallops & Thirteen(a) St Augustine's NR3 3BY
Email : tonygeorge@nunnsyard.co.uk www.nunnsyard.co.uk
- 18 Norwich University of the Arts, St George's Building,
St George's St, NR3 1BB Tel: 01603 610561 www.nua.ac.uk
- 19 Artpocket, Lion House, St George's Works, Muspole Street,
Norwich www.artpocket.co.uk
- 20 OUTPOST Gallery, 10b Wensum Street, NR3 1HR
Tel: 01603 612428 www.norwichoutpost.org
- 21 Print to the People, 53–55 Pitt St, Norwich, NR3 1DE
www.printtothepeople.com
- 22 Sainsbury Centre for Visual Arts, University of East Anglia,
NR4 7TJ Tel: 01603 593199 www.scva.ac.uk
- 23 St Etheldreda's Church, King Street, Norwich
South Asian Decorative Arts & Crafts Collection Trust,
The Old Skating Rink Gallery, 34–36 Bethel Street, NR2 1NR
Tel 01603 663890 www.sadacc.co.uk
- 25 Targetfollow at Theatre Royal, Theatre Street, NR2 1RL
sarah.cannell1@gmail.com

Venues used by members for exhibitions and events

- 26** St Margaret's Church, St Benedict's Street, Norwich
NR2 4AQ *Not open all the time
- 27** The Undercroft, beneath Memorial Gardens, Norwich Market
*Not open all the time email clare.hubery@norwich.gov.uk
- 28** Lion House, St George's Works, Muspole Street, Norwich
NR3 1DJ Tel: 07946 261651 www.lionhousenorwich.co.uk
- 29** Shoe Factory Social Club, St Mary's Works, St Mary's Plain,
Norwich NR3 3AF www.shoefactorysocial.club

Member organisations without venues

Breckland Artists www.brecklandartists.com
 Lonely Arts Club www.thelonelyartsclub.org.uk
 Harleston & Waveney Art Trail www.hwat.org.uk
 Norfolk & Norwich Festival www.nnfestival.org.uk
 Norfolk Contemporary Art Society www.n-cas.org.uk
 Norfolk & Norwich Art Circle www.nnartcircle.com
 Norwich 20 Group www.norwich20group.co.uk
 Paint Out Norwich www.paintoutnorwich.org
 Waveney & Blyth Arts www.waveneyandblytharts.com
 Young Norfolk Arts Trust www.ynaf.org.uk

Art in Norwich is produced and published by Marion Catlin,
 Culture Shift Norwich email: info@theshiftnorwich.org.uk
 Tel 07946 261651 www.theshiftnorwich.org.uk E&OE

Venues around Norfolk see map on page 56

- 30** Bircham Gallery, 14 Market Place, Holt NR25 6BW
www.birchamgallery.co.uk Tel: 01263 713312
- 31** Felbrigg Hall, Felbrigg, Norwich, Norfolk NR11 8PR
- 32** GroundWork Gallery, 17 Purfleet, King's Lynn, Norfolk PE30
1ER www.groundworkgallery.com
- 33** Houghton Hall and Gardens, King's Lynn PE31 6UE
www.houghtonhall.com Tel 01485 528569
- 34** Waveney Art Trail & Blyth Arts, Old Harleston Rd, Bungay
NR35 2AF www.waveneyandblytharts.com
- 35** Norfolk Wildlife Trust Visitor Centre, Cley-next-the-Sea,
NR25 7SA Tel 01263 740008 www.norfolkwildlifetrust.org.uk
- 36** Pocock's the Artmonger, North St, Burnham Market,
King's Lynn PE31 8HG www.theartmonger.co.uk
- 37** Raveningham Centre, Raveningham, Norfolk NR14 6NU
- 38** Salthouse Church (St Nicholas') Cross Street, Salthouse,
Norfolk NR25 7XQ – no website
- 39** Wymondham Arts Centre, 18 Church St, Wymondham NR18
OPH www.wymondhamarts.org
- 40** Mannington Hall, Norfolk www.manningtongardens.co.uk
- 41** Cley Contemporary, St Margaret's Church, Cley-next-the-Sea
(July only) www.cleycontemporaryart.org
- 42** Time & Tide Museum, Blackfriars' Road, Gt Yarmouth, Norfolk
NR30 3BX www.museums.norfolk.gov.uk Tel: 01493 743930
- 43** The Gallery Norfolk, 3 Church Street, Cromer NR27 9ER
www.thegallerynorfolk.co.uk Tel: 01263 515745

The Fitzwilliam Museum, Cambridge



Degas

DEGAS: A PASSION FOR PERFECTION

3 October 2017 to
14 January 2018

The
Fitzwilliam
Museum
CAMBRIDGE

This autumn, the Fitzwilliam Museum in Cambridge will commemorate the centenary of the death of Edgar Degas (1834–1917) with an exhibition that brings into focus its holdings of works by the artist.

Consisting of paintings, drawings, pastels, etchings, monotypes, counterproofs and sculpture in bronze and wax, the Fitzwilliam's collection is the most extensive and representative in the UK.

The exhibition will highlight many of the themes most prominent in Degas's work as well as his artistic legacy.

The Museum's collections will be complemented by an outstanding group of over fifty loans from private and public collections throughout Europe and the United States, several of which will be on public display for the first time. These include a group of paintings and drawings once belonging to the economist John Maynard Keynes.

Admission is free.

ONLY IN ENGLAND



Brighton Beach, 1966 by Tony Ray-Jones © National Media Museum

PHOTOGRAPHS BY TONY RAY-JONES AND MARTIN PARR

21 October 2017 - 15 April 2018

TIME AND TIDE, Blackfriars Road, Great Yarmouth, NR30 3BX

Tel. 01493 743930

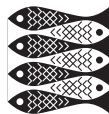
www.museums.norfolk.gov.uk

f [timeandtidemuseum](#) t @timetidemuseum



Supported using public funding by
**ARTS COUNCIL
ENGLAND**

SCIENCE+
**MEDIA
MUSEUM**



**TIME
AND
TIDE**
MUSEUM OF GREAT
YARMOUTH LIFE

Art in Norwich partners are:



Great Art for Our Region

SAINSBURY
CENTRE
for Visual Arts



HUDSONArchitects



NORWICH STUDIO
ART GALLERY

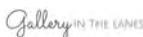
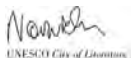
SADACC
Trust



Norwich Arts
Centre



St Etheldreda
Artist Studios



'The city of Norwich has many fans, of which I am one. It has a fantastic and historic urban fabric, a glorious rural hinterland and an unparalleled coastline of which I am proud to be able to tell people. I support the football club here and applaud the initiatives which I see taking place all over the city, wrought by the many excellent cultural organisations who work together to ensure an excellent quality of life for the citizens and those who are lucky enough to visit or stay.'

Stephen Fry.

Art in Norwich is published twice a year, Spring and Autumn and is funded by its partners working together to showcase the great art in Norwich and Norfolk all year and every year.

Please help to share it. Thank you.

www.artinnorwich.org.uk

August 2017 to March 2018



ART IN NORWICH

A round-up of visual art venues, artists, exhibitions
and events in Norwich and Norfolk



Norwich, a very fine cultural city
best explore it!

Art in Norwich is produced by The Shift Norwich
and Norwich Visual Art Forum

www.artinnorwich.org.uk



Shift Norwich



Art in Norwich