



ART IN NORWICH

Fishermen and Kings: The Photography of Olive Edis Norwich Castle 8 October to 22 January '17

Fiji: Art and Life in the Pacific Sainsbury Centre 15 October to 12 February '17

Norfolk Contemporary Art Society 60 Years On... Norwich Castle 24 September to Spring '17

FREE
GUIDE

Dozens more exhibitions at galleries & studios in Norwich and Norfolk

ART IN NORWICH

a round-up of visual art exhibitions
and events in Norwich and beyond

September 2016–March 2017

Exhibitions at a glance : October 2016–March 2017

Please use this calendar as a quick month-by-month reference to forthcoming shows.

SEPTEMBER 2016

page

1 September	St Etheldreda's : Fliss Cary	49
3 September–2 October	OUTPOST Studios : Heather Marshall	41
24 September–Spring 2017	Norwich Castle : NCAS 60 Years On...	22
27 September–29 October	East Gallery ^{NJA} : Performing No Nothingness	36

OCTOBER 2016

page

1–15 October	Norwich Cathedral : Norwich Shawls	26
1 October–3 December	Royal Drawing School : Drawing Club	42
2–22 October	Mandell's Gallery : Susan Brown	20
2–16 October	Theatre Royal : Hellesdon High School	50
5 October	Anteros Arts : 'She's Laughin'	7
5–8 October	The Forum : Inspired Art	12
6–21 October	Crypt Gallery : Artists in Residence	33
6–29 October	Lonely Arts Club : Spiralling Upward	19
7–30 October	OUTPOST : Charlie Duck Schlep	41
8 October–22 January	Norwich Castle : Olive Edis	29
9 October	The Forum : Thangka Art Lecture	13
10–11 October	The Forum : Tibetan Thangka Art	13
11 October	The Forum : NCAS Art Talk Suzie Hanna	13
12–16 October	Nunnsyard : Anna-Lise Horsley	40
14 October–30 November	Fairhurst Gallery : Susan Gunn	9
15 October	Anteros Arts : Paint Out Workshops	34
15 October–12 February	SCVA : Fiji: Art and Life in the Pacific	44
16 October	Tombland : Public Paint Out	34
17/18 October	Paint Out Competition	34
19 October	Paint Out Gala and Auction	34
20–29 October	Hostry Festival : Paint Out	26
20 October–23 January	Theatre Royal : Up The City	50
31 October–4 November	The Forum : Well Exhibition	13



Cover: Anna-Lise Horsley
'Tingueley's Sculpture-destroying Machine'

Note from the editor:

Welcome to Art in Norwich Autumn & Winter 2016/17

Now that British Art Show 8 has moved on to Southampton for its final stop, we are ready for an autumn and winter season of art. The highlights for this season are a new exhibition at the Sainsbury Centre for Visual Arts Fiji: Art and Life in the Pacific opening 15 October – see pages 44/45.

At Norwich Castle, they have had the excitement of the discovery of a missing portion of a René Magritte painting underneath another of his works and they are opening a new show featuring the photography of Olive Edis (see page 29).

In the At a Glance to the left, the darker blue strips indicate longer-running exhibitions that last beyond the month in which they start.

NOVEMBER 2016**page**

3-21 November	Norwich Cathedral : Wartime Watercolours	26
5 November-17 December	GroundWork Gallery : Out of the Wood	17
5 November	St Etheldreda's : Cora Shearing	49
6-26 November	Mandell's Gallery : Norwich School	21
9 November	The Forum : NCAS Art Talk : Simon Dell	14 & 23
10-25 November	Crypt Gallery : Delineate	33
11-4 December	OUTPOST Gallery : Lee Grandjean	41
11 November-19 March	SCVA : Japanese Photography	45
15 November-14 January	East Gallery NUA : William Latham : Mutator	36
16-23 December	Hudson Gallery : Richard Horne	18
20-25 November	The Forum : NNArt Circle Exhibition	14 & 24
23 November	East Gallery ^{NUA} : Symposium	37
24-26 November	The Forum : Richardson & Green	15
25-26 November	Norwich 20 Group : Affordable Art Sale	25
25 November-10 December	Norwich Cathedral : Norfolk Contemporary Craft Society	27
28 November-2 December	The Forum : Wexhibition	15

DECEMBER 2016**page**

1-16 December	Crypt Gallery : Homework	33
1-31 December	The Forum : Animotion	15
2-4 December	Art Fair East: St Andrew's Hall	6
3 December	St Etheldreda's : Group Show	49
4 December-7 January	Mandell's Gallery : Christmas Exhibition	21
5 December	Greenhouse Gallery : Launch of Earth	16
5 December-28 January	Greenhouse Gallery : 4th Annual Environmental Art Fair	16
5-23 December	Undercroft : UNA Gallery Norwich Contemporaries	54
6-16 December	Anteros Arts : Alex Lingford	7
9 December-20 January	Fairhurst : Group 8 : Christmas Show	9
15 December-15 January	Norwich Cathedral : Salvation	27

Culture Shift Norwich is a Get Creative Champion

Get Creative is a national campaign to get everyone creating – be that from their bedrooms or local museum, park, pottery or library – knitting, sewing, model-making and more – celebrating all of the activities that people do. 7-9 April 2017 is Get Creative Weekend – a UK-wide moment when we get everyone creating and there are events to get involved in all over the country.



The Shoe Factory Social Club

They are also marking 60 years since the Norfolk Contemporary Art Society was founded and Mandell's Gallery is also celebrating – its 50th anniversary.

For three days in October Paint Out Norwich offers an opportunity for both established artists and all-comers to get out in the fresh air and paint, with people and easels in every corner of the city.

Art Fair East pops up for three days 2-4 December at The Halls for its third year.

The Crypt is a new gallery run by Norwich School as a resource for pupils as well as guest artists and curators who will exhibit in the year-round programme – page 32/33.

And the Shoe Factory Social Club and Lion House are also becoming new spaces for creative activity including the Royal Drawing School – see pages 42 & 43.

More and more artists are establishing small studios and art spaces around the city, especially in the north, Over the Water as it is called – page 39 gives you some places to explore.

There is much more going on than we can list here so keep an eye on the website.

JANUARY 2017 page

12-25 January	Crypt Gallery : NUA Textile Design Students	33
21 January-26 February	Norwich Cathedral : David Holgate Retrospective	27
24 January-23 April	Theatre Royal : Shahram Saadat	51

FEBRUARY 2017 page

2-10 February	Crypt Gallery : Guest Curated Sculpture	33
4 February	St Etheldreda's : Group Show	49
7 February-18 March	East Gallery NUA : Jerwood Painting	37
16 February-4 March	Mandell's Gallery : Michael Horn	21

MARCH 2017 page

2-24 March	Crypt Gallery : Guest exhibition	33
2 March-15 April	Norwich Cathedral : Revelation Threads	27
4 March	St Etheldreda's : Michael Chapman	49
7-18 March	Anteros Arts : James Snelling	7

APRIL 2017 page

24 April-23 July	Theatre Royal : John Midgley	51
------------------	------------------------------	----

Index of non-listings pages	page
Dandifest 2017	8
MD Cannell Antiques and Rugs	11
NUA Open Days	38
North of the City	39
Takeaway Art	48
Print to the People	52
Shoe Factory Social Club, St Mary's Works & Lion House, St George's Works	55
Maps of Norfolk and Norwich venues	57 & 59
Bayfield Hall	58

What Next? is a national campaign to advocate for the value of the arts to society. The Norfolk What Next? chapter meets on Wednesdays 1-2pm at Norwich Playhouse, everyone is welcome to attend. Email gemma@nnfestival.org.uk if you would like know more about or visit www.whatnextnorfolk.org.uk



Art in Norwich is produced by Culture Shift in association with Norwich Visual Art Forum as a companion to **Music in Norwich**, a roundup of concerts and music events in Norwich which you can find on www.musicinnorwich.org.uk or printed copies around the city. The next edition is due out now and covers concert till April 2017.

Information about Culture Shift can be found at www.theshiftnorwich.org.uk, where you can also find an overview of Norwich culture and other useful information.

You can sign up for email updates via Culture Shift on the website.

Errors and omissions excepted, info is checked as well as possible but cannot be guaranteed.

If you require copies to display please email info@theshiftnorwich.org.uk

About Art in Norwich

This programme is the result of a collaboration of the Norwich Visual Art Forum, a number of organisations who promote visual art, public art, craft and architecture in and around Norwich. The aim is to gather visual art listings in one place so that they are easy to find and to offer an overview of art activity and infrastructure across the city and throughout the year. The Norwich Visual Art Forum is a self-supporting partnership of visual art groups and organisations active in Norwich and the surrounding area.

We hope you will keep this booklet safe as it covers six months' programming. Because of space limitations and lots going on, exhibition and event details are brief but you can find out more from individual organisations and venues from their own websites. See pages 61/62 for contact and venue details.

Please also visit our website at www.artinnorwich.org.uk where you can download a pdf of this programme.

Important: All information is subject to change - please check with individual organisations before travelling to an event.

*Image: Whate Ivory Double Figure Hook,
courtesy University Of Aberdeen Museums*



**SAINSBURY
CENTRE**
for Visual Arts

www.scva.ac.uk

**Fiji: Art and Life in
the Pacific**

15 October 2016
to 12 February 2017

ART FAIR EAST

www.artfaireast.com

in association with

MUSKER M^CINTYRE
ESTATE AGENTS

2nd - 4th December 2016
St Andrews Hall
Norwich, Norfolk

Opening hours

Friday 2nd - 10.30am to 6.00pm

Saturday 3rd - 10.30am to 6.30pm

Sunday 4th - 10.30am to 5pm

Tickets £4 or £3 concessions
Under 14's Free



Anteros Arts Foundation



Anteros Arts Foundation registered charity no. 1135692

Exhibitions, courses and workshops

We are delighted to announce the launch of our 8 month Diploma course starting in September 2017 and incorporating tuition in the fundamental fine art skills of drawing, painting, sculpture, printmaking and art history and theory.

In the meantime, to hear more about the leisure courses and workshops we are running this year, please visit www.aterosdiploma.com

At Anteros we also offer a vibrant programme of free entry exhibitions. We have two gallery spaces, the Main Gallery with original Tudor features including a carved ceiling, fireplace and moulded timber window and The Front Room which is a more contemporary space.

Exhibitions change over every two weeks and highlights this winter include:

5 October to 5 November : Illustrations by She's Laughin'

6 to 16 December : A Camera Obscura by Alex Lingford

7 to 18 March : Sculpture by James Snelling

The Anteros Arts Foundation is an Arts Centre located in Fye Bridge Street, Norwich NR3 1LJ and a registered charity for education.

For more information please visit
www.aterosfoundation.com/courses

Norwich Dandies present **Dandifest 2017** Independent State of Dandy

Artists we need YOU!!

see website/facebook/email us
for more details

bicycle art

bird pictures

postcard art

FOOT SQUARE
ART WORKS

PROPOSALS FOR NEW ART WORKS,
WORKSHOPS,
PERFORMANCE ART,
VIDEO ART & MAGIC!

norwichdandies.co.uk

Dandifest arts festival runs april-may 2017
across Norwich & in Great Yarmouth

facebook.com/TheNorwichDandies/
norwichdandies.co.uk
norwichdandys@gmail.com

**CELEBRITIES/NORFOLK
PERSONALITIES PORTRAITS**

Fairhurst Gallery



Tucked away in the Norwich Lanes, the Fairhurst is a unique and charming gallery space.

Established in 1949, the Fairhurst Gallery and Picture Framers is a hidden gem in the historic centre of Norwich in Bedford Street. The framing workshop offers artistic services of the highest quality and the Gallery champions contemporary fine art.

There are regular exhibitions platforming the best of the region's talent.

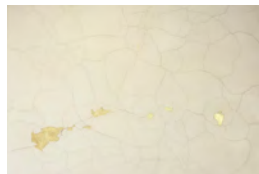
Exhibitions

Friday 14 October to
Wednesday 30 November

SUSAN GUNN: NEW GROUND

An exclusive exhibition of new paintings made during a 12 month residency at New Art Spaces, Chorlton, Greater Manchester.

Supported by Castlefield Gallery Agency.



Susan Gunn



Group 8

9 December 2016 to 20 January 2017

GROUP 8 : CHRISTMAS SHOW

Group Eight are an identifiable collective of independent, multi-disciplinary, Norfolk-based artists, who regularly exhibit their work at different venues in London and East Anglia.

Admission free. Opening times 9.30am-5.30pm
Monday-Friday 10am-2pm Saturday
Tel: 01603 614214 fairhurstgallery@gmail.com
www.fairhurstgallery.co.uk

Gallery in the Lanes



Allister Malcolm 'Golden Trailing Bowl', glass



Laurie Rudling, 'On The Wing Again' collagraph

Gallery in the Lanes is a vibrant and friendly gallery right in the heart of the Norwich Lanes, hosting the best of local and national artists including glass designers, painters, print-makers, ceramicists, jewellery designers and more.

Located on Bedford Street in the former Hovell's building, the gallery takes pride in sourcing only the best practitioners in their respective disciplines.

The friendly gallery team has a wealth of knowledge to help customers find artwork they will treasure, for themselves or as gifts for others. You can also visit the online shop at www.galleryinthelanes.co.uk

Exhibitions

The gallery has an ever-evolving selection of artworks with new artists being welcomed to the collection regularly.

Included among its artists are printmaker Laurie Rudling, glass designer Allister Malcolm and ceramicist Rowena Brown.



Rowena Brown 'Set of Four Houses' ceramic

Gallery in the Lanes, 25 Bedford Street,
Norwich NR2 1AG.

Opening hours:

Monday-Saturday 9.30am–5.30pm

Sunday 11am–4pm

Telephone: 01603 767282

Email: info@galleryinthelanes.co.uk



MD CANNELL ANTIQUES AT THE RAVENINGHAM CENTRE

The Raveningham Centre, Beccles Rd, Raveningham, Norwich NR14 6NU

Based in the beautiful South Norfolk countryside M D Cannell Antiques has been trading in rugs, antiques and textiles for over 30 years. Mal Cannell sources beautiful furniture and objects for the home from the UK, France and Belgium and has specialist knowledge in country furniture and Persian rugs and textiles.

Open Wednesday - Sunday 10-4pm or by appointment on 01508 548406.

www.mdcannellantiques.com

The Raveningham Centre is 10 miles south of Norwich just off the A146 where you can visit the showrooms and also take in the delights of the Ravenous Cafe which serves delicious homemade tea & cakes.

Picture framer Liz Cannell and landscape painter Sarah Cannell also have their studios at the Raveningham Centre - visit for a complete day of art, antiques, textiles and cake!!

www.sarahcannell.co.uk

The Forum



The Forum, right in the heart of Norwich city centre, is home to a year-round programme of FREE exhibitions, events and activities. It's also a great place to grab a coffee, a pizza and to explore one of the busiest libraries in the UK.

Our website has information on day-to-day events going on in the huge, glass Atrium, the Gallery and the Auditorium. There are also courses, classes and talks in the library and conversation gatherings in Café Bar Marzano.

You can follow The Forum on Twitter – @TheForumNorwich – and Facebook – The Forum, Norwich – for updates, images and videos.

Our programme of events is already packed with an eclectic mix of art, literature, dance, music, sport, heritage, science and technology. The Forum is open seven days a week from 7am to midnight, with plentiful parking underneath. We have regular shows by local artists and craftspeople and this is only a selection so please visit the website for updated information: www.theforumnorwich.co.uk



*Student from
Thetford Academy*

Wednesday 5 to Saturday 8 October 2016, 9am-5pm
INSPIRED ART

A wide selection of art from promising young artists across East Anglia, inspired by their unique perspective on life in the region today.

This new exhibition features contributions from the Inspiration Trust family of schools across Norfolk and Suffolk, including Jane Austen College and The Hewett Academy in Norwich, Hethersett Academy, Thetford Academy, Cromer Academy, and East Point Academy in Lowestoft.

Sunday 9 October 2016, 2pm–4pm

EXHIBITION OPENING AND THANGKA ART LECTURE

Monday 10 to Tuesday 11 October 2016, 9am–5pm

TIBETAN THANGKA ART

Discover a collection of Thangka paintings by one of the top 10 Thangka Masters in China. Thangka was a distinctive art form that arose in the Snow Mountains during the time of Sontzen Gampo. Throughout its long history, it has absorbed and blended elements from the Han and Tibetan peoples and from India and Nepal. It has developed to become an artistic form deeply imbued with distinctive Snow Mountains characteristics and of high aesthetic value.

Tuesday 11 October 2016, 7.30pm

NCAS ART TALK: POETRY AND ANIMATION

A talk by Professor Suzie Hanna on *Poetry & Animation: Re-imagining Literature as Visual & Sonic Art*. Suzie Hanna's work has been selected for international festivals, commissioned for gallery exhibitions, and projected as part of live musical and theatrical performances. Since 2001, Suzie has been collaborating with poets, academics, composers and musicians to create mixed-media animated poetry films. Also see page 23.

Tickets £2.50 Norwich Contemporary Art Society members, £4 for non-members

www.n-cas.org.uk

Monday 31 October to Friday 4 November 2016, 9am–5pm

THE WELL ANNUAL EXHIBITION

Join The Well for their annual exhibition of paintings, collages, photographs, drawings, prints, poetry, textiles and cards.

The Well is a group of artists who live with mental health disorders. Established in 2006, they meet once a month to support and encourage each other in their artwork. The Well actively works towards ending the stigmatisation of all who live with mental health disorders and hopes to promote understanding and tolerance of such illnesses.

This event is funded by The Sport Relief Community Fund via Norfolk Community Foundation and the Norfolk County Council Arts Project Fund.



Still from *Lover's Cry* by Suzie Hanna

Wednesday 9 November 2016, 7.30pm

NCAS ART TALK WITH SIMON DELL

Simon Dell delivers a talk on The Paradoxes of Land Art in the British Isles from the 1960s onward. Simon is a senior lecturer in art history at University of East Anglia and has published in the fields of twentieth-century art, design and photography history. Also see page 23.

Tickets £2.50 Norwich Contemporary Art Society members, £4 for non-members
www.n-cas.org.uk



Blue Pansy by Sue Williams, NNAC

Sunday 20 November 2016, 12pm–5pm

Monday 21 to Friday 25 November 2016, 9am–5pm

NORFOLK AND NORWICH ART CIRCLE EXHIBITION

See the 192nd Norfolk and Norwich Art Circle (NNAC) exhibition of paintings, drawings and sculptures by members.

The NNAC was formed 1885 and has included in its membership artists of national and international acclaim, such as Alfred Munnings, Edward Seago and Ian Houston. It comprises a mixture of professional and amateur artists whose work has been selected by a panel of their peers for this exhibition. Also see page 24.



The Working Party by John Ayton, NNAC

Thursday 24 November to Saturday 26 November 2016

MARY RICHARDSON AND DAVID GREEN

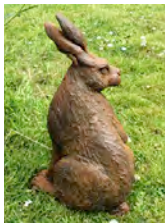
A three day exhibition showcasing paintings and sculptures by local artists Mary Richardson and David Green. Works include wildlife sculptures in cold cast bronze, aluminium and calcium carbonate resin alongside pastels and acrylics of landscapes and the sea.

Monday 28 November to Friday 2 December, 9am–5pm WEXHIBITION 2016

Local photographic retailer Wex Photographic brings its annual staff photography exhibition to The Forum. The eclectic mix of images has something for everyone, showcasing Wex Photographic's talented staff.



Above:
David Green



Mary Richardson



Wexhibition, Rachel Sarsby



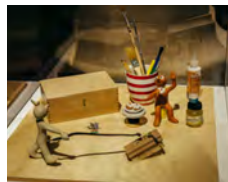
Thursday 1 to Saturday 31 December 2016
(closed Christmas Day and Boxing Day), 10am–4pm
Inside The Gallery

ANIMATION

Visitors to this fun-packed, interactive, animation exhibition will enter a magical world created by some of the UK's most imaginative and award-winning artists and animators.

Have a go at creating your own animations using special interactive tables provided by Academy Award winners, Aardman, and meet their well-loved character Morph.

For more information visit www.theforumnorwich.co.uk



Morph ©Aardman Animations Ltd
2016



Interactive table at the AniMotion
exhibition



Supported using public funding by
**ARTS COUNCIL
ENGLAND**

Greenhouse Gallery



The Greenhouse Gallery is a contemporary Environmental Art Gallery and includes fine art, cards, prints, paintings, books.

Licensed organic café with courtyard garden

Visit website for details

www.greenhousetrust.co.uk

42-46 Bethel Street, Norwich NR2 1NR

Open Tuesday-Saturday 10am-4.30pm

Exhibitions

Monday 5 December 2016 to
28 January 2017

4TH ANNUAL ENVIRONMENTAL ART FAIR

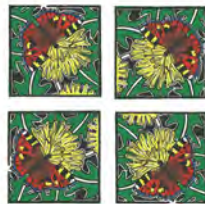
Prints, paintings, pottery, cards
and gifts – see website for
opening times.

Monday 5 December 2016
LAUNCH OF eARTH

Open Submission Invitation
to artists, writers and scientists.

Join Peter Melchett (tbc)
7pm for 7.30pm for launch
of briefing and fund-raising
auction. The auction runs till
17 December.

Work selected for eARTH will be on display in the
Gallery as part of the Norfolk and Norwich and Open
Studios Festival in 2107. View the work of represented
artists involved in eARTH online from April to the
Festival launch in May.



Vanna Bartlett – Marking Time



Rory McShane – Rainy Field

Out of the Wood

Works by **Dominic Ash, Lorraine Bewick, Lee Grandjean, Doo Gurney, Calum McClure, Par Avion, Tim Plunkett, Tim Simmons and Ian Tyson**

5 November-17 December Tuesday to Saturday 11.00-4.00



GroundWork Gallery

opposite the Custom House

17 Purfleet Street, King's Lynn, PE30 1ER mail@groundworkgallery.com

A gallery for art+the environment

GroundWork Gallery supports the Woodland Trust's campaign for a charter for Trees, Woods and People, November 2017 www.woodlandtrust.org.uk

www.groundworkgallery.com twitter@groundworkkl

GroundWork

The Hudson Gallery



The Hudson Gallery is a new city centre exhibition space, focusing on work by artists exploring the relationships between art, design and the built environment.

The gallery is owned and curated by Hudson Architects – the region's leading design-led architecture practice who are long-standing supporters of the arts community in East Anglia.

HUDSON Architects
37 St Andrews Street, Norwich NR2 4TP
T: +44 (0) 1603 766 220

Exhibition

Wednesday 16 November to Friday 23 December 2016

RICHARD HORNE

Richard Horne is a graphic designer, illustrator and author turned printmaker who now splits his time between the computer screen and the silk screen. He goes by the artist name EL HORNO.

Richard originally wanted to train as an architect but 'was turned by the dark side of graphic design'. His interest and affection for architecture is reflected in this series of prints which offer a playful and humorous perspective on some of our most well-known landmark buildings.



www.hudsonarchitects.co.uk/gallery
[@hudsonarch](https://www.instagram.com/hudsonarch)
[facebook.com/hudsonarchitects](https://www.facebook.com/hudsonarchitects)

Lonely Arts Club



The Lonely Arts Club is an exciting group of artists based in the East who come together with the aim of showing outstanding new work from a range of disciplines.

For the third time in the spacious Undercroft Gallery the Lonely Arts Club will be showing the breadth of practice of its members, from contemporary and innovative to traditional Fine Art 2-D and 3-D works.

The Undercroft is located in the city centre, under the Memorial Gardens at the back of Norwich market, in front of City Hall and near the Forum.

Exhibition

6-29 October 2016
The Undercroft
St Peter's Street
Norwich NR2 1NH



Jacqui Jones

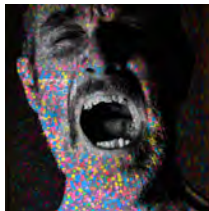
SPIRALLING UPWARD

Group show

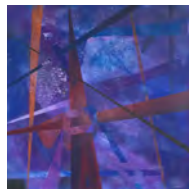
Tuesday to Sunday 11am-6pm

For more info:

www.thelonelyartsclub.org.uk



Julia Cameron



Natasha Day

Mandell's Gallery



Mandell's Gallery is one of Norwich and Norfolk's most respected commercial art galleries. Mandell's Gallery was founded in 1965. Originally specialising in 19th century Norwich School painters, the gallery has expanded greatly and now has a diverse collection of traditional and contemporary art, offering opportunities for many new and local artists as well as more established names. You are welcome to view the collection at the art gallery, situated on the beautiful and historic street of Elm Hill, near Norwich Cathedral.

More info www.mandellsgallery.co.uk Tel 01603 626892

Exhibitions

Sunday 2 to Saturday 22 October 2016

SUSAN BROWN : FINDING THE CONNECTION

Susan Brown is well-known for her architectural cityscapes, capturing the wonderful bustling atmosphere and the beautiful architecture of European cities.

In recent years Susan has been exploring a more abstract style. Investigating Architecture and Structure and its relationship with the environment, she portrays her findings in wonderful patterns and shapes.

This exhibition will demonstrate the connection between her experience in design, painting and architecture.



Susan Brown



James Stark, Norwich School of Painters

Sunday 6 November to Saturday 26 November 2016

NORWICH SCHOOL EXHIBITION

Mandell's Gallery was founded on The Norwich School of Painters and regular exhibitions were held at the gallery. To celebrate Mandell's Gallery's 50th Anniversary we are holding a Norwich School exhibition, in the traditional time of November.

A comprehensive exhibition of the leading members from the Norwich School, this will be a fantastic opportunity to see works by historical Norwich painters.

**Sunday 4 December 2016 to
Saturday 7 January 2017**

MANDELL'S GALLERY CHRISTMAS EXHIBITION

Mandell's Gallery will be holding its annual Christmas exhibition. A large mixed show featuring traditional and contemporary paintings from artists across the region.



Michael Horn

**Thursday 16 February to
Saturday 4 March 2017**

MICHAEL HORN

Michael is influenced by his surroundings, the landscape, his proximity to the sea and also certain qualities in English painting of the 20th century, particularly landscapes.

Often the paintings have generic titles which allow him to take the moods and qualities of things and places, and not be 'locked in' to particular descriptive 'scenes'. This romantic spirit is 'stretched' over more 'classical' abstract structures.

Norfolk Contemporary Art Society



Norfolk Contemporary Art Society, founded in 1956 and celebrating its 60th anniversary this year, is a charitable association that promotes the interests of contemporary art in Norfolk. It has acquired its own collection of paintings and sculpture, which form the basis of holdings in post-war art in the Norwich Castle Museum & Art Gallery.

ncas also raises funds for public sculptures and has an on-loan collection of local artworks.

Supporting local art in many ways, **ncas** mounts a lively programme of monthly events, mostly in Norwich, which includes lectures by artists, critics and art historians, gallery visits, auctions, private views and parties. They also curate exhibitions, including the biennial open show in The Forum (see *ncas16* photos above).

Exhibitions, events and talks

Saturday 24 September 2016 to Spring 2017
Norwich Castle Museum and Art Gallery

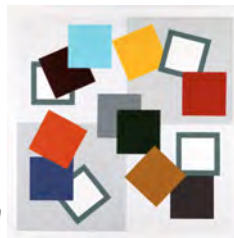
NCAS: 60 YEARS ON...

Over its 60 year of existence, **ncas** has loaned, part-funded or gifted to the Castle Museum & Art Gallery many of the paintings and sculpture that form the basis of its post-war collection. Norfolk Museums Service are joining with us in celebrating our 60th anniversary through this exhibition in the Timothy Gurney Gallery featuring many of those works. Check the **ncas** website for full details and associated talks and events.



Left:
*Prunella
Clough
Man
Entering a
Boiler House
1957*

Right:
*Mary Webb
San Filippo
IV (version 2)
2010*



For more details of events as they become available, as well as membership of **ncas** please visit the website www.n-cas.org.uk.



*Still from the animation
Fierce Light by
Professor Suzie Hanna
a new commissioned
work inspired by WW1
on the 100th anniversary
of the Battle of the
Somme.*

Tuesday 11 October, 7.30pm
The Auditorium, The Forum, Norwich

Poetry & Animation:

RE-IMAGINING LITERATURE AS VISUAL & SONIC ART

A talk by Professor Suzie Hanna

Since 2001 Suzie Hanna has been collaborating with poets, academics, composers and musicians to create mixed-media animated poetry films. Her work has been selected for international festivals, commissioned for gallery exhibition, and projected as part of live musical and theatrical performances. Animation and poetry can be considered to share qualities that include the use of compression, metaphor, accurate timing, transformation, metamorphosis, voice, gesture, typography and spectacular narrative. But there are ethical and interpretative issues to be considered when colliding temporal forms. The presentation will feature recent commissions and work in progress as well as exemplars from historical and contemporary poetry film.

Members £2.50, non-members £4



*Bruce McLean 2
Rock and
Shorescapes,
Largiebeg 1969*

Wednesday 9 November 2016, 7.30pm
The Auditorium, The Forum, Norwich

THE PARADOXES OF LAND ART IN THE BRITISH ISLES

A talk by Simon Dell

Simon Dell has published in the fields of twentieth-century art history, design history and the history of photography. He has also worked on site specificity and sculptural practice after 1960s minimalism. This talk explores the status of land art in the British Isles from the 1960s onward. Given that many works were either inaccessible or ephemeral in their nature, what was the relationship between the 'work' and its 'documentation'? And in what sense was this work 'British'? Does it belong to a British landscape tradition or to a broader current of international activity?

Members £2.50, non-members £4

Norfolk & Norwich Art Circle



Founded in 1885 the Norfolk and Norwich Art Circle continues to play an important part in Norfolk's cultural scene. We exhibit at least twice a year in Norwich and Norfolk to showcase the best work of nearly 200 members. A wide range of work from traditional to modern in both subject and style can be seen from a group of professional and good amateur artists.

We provide a programme of demonstrations and talks as well as visits to studios, galleries and workshops. The Art Circle also has its own life group and frequent social events. For more info contact our secretary.

Secretary, Geoff Kitchen:
geoffandvirginia@tiscali.co.uk. Tel: 01508 570732
www.nnartcircle.com

Exhibition and talk

Sunday 20 to Friday 25 November 2016

The Forum, Millennium Plain, Norwich

NORFOLK AND NORWICH ART CIRCLE

192nd EXHIBITION OF ART



*Morning on
the Orwell
by John Shave*

Saturday 22 October 2016, 2-4pm

United Reformed Church Hall, Ipswich Road, Norwich

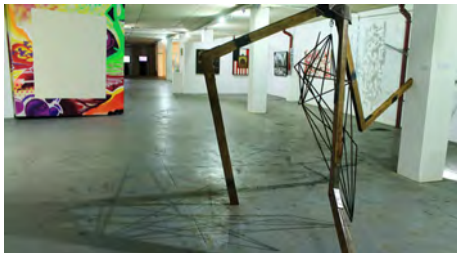
DEMONSTRATION: RENOWNED ARTIST JOHN SHAVE

Non-members welcome, £3 on the door

More details about these events and others in 2017 available from our Secretary or on our website. New members from 17 years upwards always welcome, whether you draw, paint, sculpt or have embraced the digital world. This prestigious group has a proud past and our members show in major galleries and at the RA. Most of our artists simply enjoy art and we encourage all in that.

Membership is £20 (£30 two at same address) per annum.
Contact Jan Motley: jan.motley@btinternet.com
Tel: 01508 495320

Norwich 20 Group



Group exhibition at the Undercroft

The Norwich 20 Group was founded by Walter Watling in 1944 with the intention of raising the standard of local professional art to something worthy of the artistic history of the city, achieved by selective membership and by mutual criticism and appraisal of work.

After 70 years, the membership has grown to more than eighty artists, working in a variety of media and including many with national reputations.

The group puts on regular exhibitions, has a monthly meeting, and a weekly life-drawing workshop.

For more information see www.norwich20group.co.uk
Free entry to all exhibitions

Exhibitions and events

Friday 25 November 12-8 (bar 6-8pm)
Saturday 26 November 10-5pm
Park Lane Chapel, Park Lane, Norwich

20 GROUP AFFORDABLE ART SALE

Come and buy original art from 20 Group members

Thursdays from September 2016 to 15 December 2015
and from 12 January to 30 March 2017, 7.30-10pm
Riverside Studio, Wensum Lodge, King Street, Norwich
WEEKLY LIFE DRAWING WORKSHOP

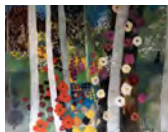
This drop-in workshop is open to everyone, at £5 a time (plus a termly fee of £5), students are welcome. Come early to reserve a space. Bring your own drawing materials; boards, easels, chairs and donkeys provided.



Vanessa Pooley

N20 Group host monthly open meetings at Park Lane Chapel, Norwich on first Tuesday of the month (except July & August) from 7.30pm

Check website for details, free to attend and open to all, please arrive in good time to get a seat.



Nell Close

Norwich Cathedral



Located in the heart of Norwich in the beautiful Tombland area of the city, **Norwich Cathedral's Hostry Visitor and Education Centre** hosts a rolling programme of international, national and local exhibitions within the light and spacious exhibition hall.

As well as the exhibitions you can visit the awe-inspiring Cathedral, view the largest monastic cloister in England and enjoy the tranquillity of the Cathedral Close.

Exhibitions are in the Hostry Visitor & Education Centre, Monday to Saturday 9.30am–4.30pm and Sunday 12pm–3pm.

Exhibitions are open to all and admission is free.

Saturday 1 October to Saturday 15 October 2016

NORWICH SHAWLS: PAST GLORY, PRESENT INSPIRATION

The Norwich Costume and Textiles Association presents a selection of beautiful, nineteenth century, Norwich shawls woven by local craftsmen, many from private collections and seldom seen by the public. These shawls are contrasted with a selection of contemporary items made for the exhibition by present day artists inspired by the work of their nineteenth century predecessors.

Thursday 20 October to Saturday 29 October 2016

HOSTRY FESTIVAL 'PAINT OUT'

As a part of the 2016 Hostry Festival, this exhibition will be the culmination of a unique outdoor event at which selected artists will paint en plein air at some of Norwich's finest historic landmarks. Also see page 34.

Thursday 3 November to Monday 21 November 2016

WARTIME WATERCOLOURS: Centenary Exhibition of the work of Julian Cory-Wright (1916–1944)

Supported by the Royal Artillery Association this exhibition includes lino cuts, military sketches including the voyage to Normandy on D-Day+8 and landscapes of the North Norfolk Coast, Northumberland and the Brecon Beacons.

Friday 25 November to Saturday 10 December 2016

NORFOLK CONTEMPORARY CRAFT SOCIETY

Norwich Cathedral again welcomes the Norfolk Contemporary Craft Society, established for over 40 years renowned both locally and nationally for its high quality and stylish work.

Thursday 15 December '16 to Sunday 15 January 2017

'SALVATION' BY SALOOMEH ASGARY

Salomeh Asgary is a sculptress of Iranian origin, now living in England as a result of her conversion to Christianity. Her sinuous carvings in wood are expressions of her faith in which she expresses her own sense of being sculpted by God.



Saturday 21 January to Sunday 26 February 2017

DAVID HOLGATE RETROSPECTIVE

David Holgate led a dual existence as a professional musician playing the double bass and an artist as a sculptor and letter cutter.

This memorial retrospective features his improvisations in stone from the Cathedral and across the region.

Thursday 2 March to Saturday 15 April 2017

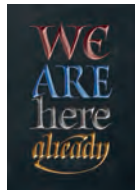
'REVELATION THREADS' BY JACQUI PARKINSON

A spectacular display of fourteen huge stitched panels of images from the Book of Revelation. The unusual techniques, a combination of painted dyes, multi-layered silks cut to create an extraordinary frayed effect and then metallic leathers stitched on top. The artist invites you to look again at Revelation with fresh, hopeful eyes!

Above: 'We are here already' by artist and musician David Holgate

Left: 'Salvation' by Salomeh Asgary

Right: 'Revelation Threads' by Jacqui Parkinson



Please visit www.cathedral.org.uk for more details.

Norwich Castle Museum & Art Gallery



Built by the Normans as a Royal Palace 900 years ago, **Norwich Castle** is now home to outstanding collections of fine and decorative art, archaeology and natural history.

Alongside its own exhibitions Norwich Castle hosts a regular programme of touring shows from major galleries and museums including Tate, V&A, British Museum, the Hayward Gallery and many more.

The art programme at Norwich Castle is supported by the East Anglia Art Fund – a local charity dedicated to bringing great art to Norfolk.
www.eastangliaartfund.org.uk



Exhibitions

24 September 2016 to Spring 2017
Norwich Castle Museum & Art Gallery
Timothy Gurney Gallery

NORFOLK CONTEMPORARY ART SOCIETY SIXTY YEARS ON...

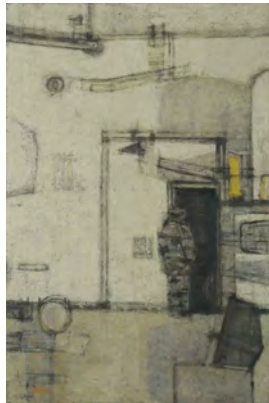
Highlights from the Castle's Collection

2016 marks the 60th anniversary of the founding of the Norfolk Contemporary Art Society.

This exhibition celebrates the occasion and also showcases the works that the NCAS have helped Norwich Castle to acquire over those years.

Prunella Clough's 'Man Entering a Boiler House' was the first acquisition in 1956.

See also page 22.



Prunella Clough 'Man Entering a Boiler House' © Estate of Prunella Clough.
DACS 2016

Special exhibition galleries

Saturday 8 October 2016 to 22 January 2017

FISHERMEN AND KINGS: THE PHOTOGRAPHY OF OLIVE EDIS

This landmark exhibition explores the work of the pioneering photographer, Olive Edis (1876-1955). Edis, although now relatively unknown, was one of the most important photographers of the first half of the 20th century and the first-ever accredited female war photographer.

The breadth of her subjects, from British royalty and aristocracy to the craggy faces of the fishermen of north Norfolk, together with her highly atmospheric photographs of the battlefields of France and Flanders taken during her time as an official First World War photographer, raise her to international status.

The exhibition features rare photographs taken by Edis between the years of 1900 and 1955. Norfolk Museums Service holds the largest collection of Edis' work in the world. This exhibition draws on this unique collection, as well as significant works held by the Imperial War Museums and National Portrait Gallery.



*Olive Edis, Prince Albert (King George VI)
Glass plate negative, 1920
© Norfolk Museums Service (Cromer Museum)*

Ongoing exhibitions

Colman Project Space

From 26 March 2016

TO WATCH THE CORN GROW, AND THE BLOSSOMS SET:
THE ART OF CLAUGHTON PELLEW



Claughton Pellew, *Mother and Child*, © estate of the artist

On the fiftieth anniversary of his death, discover the exquisite drawings and wood engravings of artist Claughton Pellew (1890–1966), inspired by the harmony of country life.

Colman Watercolour Gallery

From 26 March 2016

FROM NORFOLK TO NUBIA:
THE WATERCOLOURS OF E.T. DANIELL



E.T. Daniell, *Figures at Corfu, Greece, 1840* © Norfolk Museums Service

Edward Thomas Daniell (1804–1842) was a priest, artist and antiquarian who spent three years travelling across Europe and the Middle East producing the vibrant watercolours exhibited here.

There is an admission fee to Norwich Castle and access to all galleries and exhibitions is included. You can visit the shop and café for free

Norwich Studio Art Gallery



Norwich Studio Art Gallery has been a part of the Norfolk art scene for over 10 years. Housed in a seventeenth century former butchers shop this small gallery is a colourful part of local life in Upper St Giles.

The gallery specialises in modern and contemporary fine art with a focus on Eastern European arts and crafts.

The Studio Art Gallery is open 10 am to 5pm Wednesday to Saturday. If you are making a special journey please phone in advance to check.



Artist and curator Gennadiy Ivanov works prolifically from his studio here and at Outpost Studios in Gildengate House. He loves painting people and his work is vibrant, large and strong.

He says '*My works are about the fragility of nature, humans and the World. I am inspired by nature and music. I capture the emotional and the intellectual energy of my vision to reprocess the structure of serendipity. I listen to and am influenced by my emotions and create a world that is a visual feast. This is a world that is resolved in colour, form, texture, and emotion.*'

Gena has also curated three successful exhibitions in the Undercroft in Norwich and is planning a fourth for September 2017 - called *Revolution*.



77 Upper St Giles Street, Norwich NR2 1AB
Tel: 01603 492093 e: info@studioart.org.uk



The Crypt Gallery

Norwich School is proud to announce this year's listings for The Crypt Gallery.

Located in the crypt space below the school chapel, this fantastic building, with its beautiful vaulted ceiling, now offers a gallery environment in which the school can host a variety of exhibitions.



NORWICH SCHOOL

The Crypt Gallery at Norwich School



*The Crypt Gallery
entrance in
Cathedral Close*

The Crypt Gallery is a new venture which Norwich School is keen to develop as a resource for the benefit of the whole Norwich community. With its convenient and central location within the Cathedral Close, it is hoped that the gallery will become an exciting addition for the visual arts within Norwich and Norfolk.

Whilst being a venue to showcase our pupils' work, the school also has ambitions to host contemporary exhibitions across all disciplines within art and design practice. Guest artists and curators will be invited to show their work and there is potential to run educational workshops to inspire children across Norfolk.

For more information please email
cryptgallery@norwich-school.org.uk

Exhibitions

Thursday 6 October to Friday 21 October 2016

An introductory exhibition to the work of this year's Artist in Residence Louise Richardson, and our two Art and Design Gap students Rachael Cocker and Emily Leason.

Thursday 10 November to Friday 25 November 2016

DELINEATE — A guest curated exhibition by Helena Golanó featuring the work of Annie Brundrit, Juan José Guerra and Steve Baker.

Thursday 1 December to Friday 16 December 2016

HOMEWORK — An exhibition of recent work by the Art and Design staff at Norwich School.

Thursday 12 January to Wednesday 25 January 2017

An exhibition of work in progress by Year 2 BA (Hons) Textile Design students from Norwich University of the Arts.

Thursday 2 February to Friday 10 February 2017

A guest curated sculpture exhibition bringing together the work of different sculptors and makers, selected by the artist Bob Catchpole.

Thursday 2 March to Friday 24 March 2017

A guest curated exhibition – details will be confirmed – check www.artinnorwich.org.uk in 2017.



PAINT
OUT

Norwich

15-19 Oct 2016

COMPETITION
WORKSHOPS
PUBLIC PAINT OUT
GALA & AUCTION
EXHIBITION
ART SALE • AWARDS

15 Oct: Art Workshops • 16 Oct: Public Paint Out • 17/18 Oct: Competition
19 Oct: Gala Private View & Auction • 20 Oct onwards: Exhibition

www.paintoutnorwich.org



Paint Out Norwich



@paintoutnorwich

Painting:
'Early Light, Norwich Market'

Artist: Michael Richardson

Photograph:
Mark Ivan Benfield



EN PLEIN AIR PAINTING

*Its relevance, skill
and background
by James Colman,
artist*

JAMES COLMAN

Norfolk born artist and former London gallerist James Colman is the entrepreneur behind 'Paint Out', a Norwich-based outdoor painting event, now in its third year, held October 15-19.

As an artist Colman takes his practice out of doors, in all weathers, all year round. His ambition is for similar minded artists to realise their own potential by competing in juried three hour long painting competitions that place professionals and amateurs together to face the challenges of painting in the great outdoors.

"The perception that plein air painting is the preserve of the Sunday amateur is in need of revision," he says. "There are amazing works of art being made at all levels that are pushing the boundaries both in technique, use of media and scale that sometimes defy what is humanly possible.

"The sheer accessibility of outdoor painting, by the very fact that the art is being made on the streets or in the

field, means that it provides a positive, fresh alternative to interpreting reality other than via a smartphone or tablet.

"It is an exciting, challenging and rewarding journey, open to all ages and abilities," he said.

Paint Out Norwich, part of the Hostry Festival, offers a rare opportunity to watch national and international artists at work facing the challenges of creating art outdoors in public view.

Artists can enter by their preferred medium which broadens out the opportunities for them to win and means their work is judged alongside those working in the same medium. But they are all subjected to a rigorous online application and judging process which ensures the highest standard.

The works are exhibited during a ticket-only gala preview on October 19, and can be purchased through a silent auction. Works will be judged by eminent names from the art world, and monetary prizes of about £5000 awarded on the night and the exhibition continues daily from 9-4pm at the Cathedral Hostry until October 29.

October 15 and 16 offers a chance for everyone to get involved with a mass Paint Out in Tombland and book-in-advance workshops covering portrait painting, watercolours, a nocturne masterclass and others to be announced, at Anteros Arts Centre which, together with North Café and Bar, is providing the artist's hub. So get out and about and paint - more at www.paintoutnorwich.org

Keep up with the action on www.facebook.com/paintoutnorwich, and Twitter [@paintoutnorwich](https://twitter.com/paintoutnorwich)



East Gallery^{NUA}, Denisa Ilie

East Gallery^{NUA} is a city centre public art space showcasing a programme of exhibitions by internationally recognised artists, curators and media practitioners. Exhibitions are accompanied by seminars and lectures delivered by specialists and curators, which enrich the University experience for students and those living and working in Norwich, as well as visitors to our city.

East Gallery^{NUA}, St Andrews Street, Norwich NR2 4AE
Tel: 01603 886385 www.nua.ac.uk/gallery

Opening times vary for each exhibition.
Please check website. **FREE ADMISSION**

Exhibitions

Tuesday 27 September to
Saturday 29 October 2016

PERFORMING NO THINGNESS

An exhibition of work by artists who were all part of the 'Exploding Galaxy' group in the 1960s.

Concrete poems by Dom Sylvester Houédard and kinetic pieces by his contemporaries, Kenelm Cox and Li Yuan Chia including archive objects never exhibited before.

Tuesday 15 November 2016 to Saturday 14 January 2017

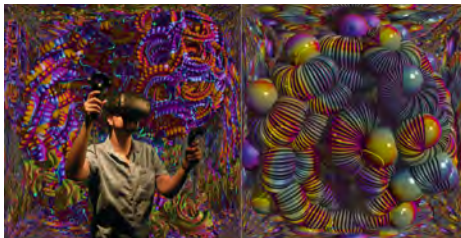
WILLIAM LATHAM : MUTATOR

An exhibition by this pioneer of computer generated art, Prof William Latham showing ground-breaking Virtual Reality (VR) work made in collaboration with Prof Stephen Todd and digital sound artist and researcher Lance Putnam.

Visitors will be invited to experience two new works using VR headsets – an opportunity not to be missed.



*Ken Cox's studio with balloons, c.1968 © Ken Cox
Courtesy Lisson Gallery*



William Latham, *Organic Art VR*, 2016 © William Latham

Wednesday 23 November 2016, 10am-4pm
ONE-DAY SYMPOSIUM, 'VIRTUAL WORLDS'

In conjunction with the exhibition, Mutator, Norwich University of the Arts will host a one-day symposium examining virtual reality, computer art and artificial intelligence.

Speakers include Prof William Latham (Goldsmiths, University of London), Prof Stephen Taylor (University of Oxford).

Open to all, tickets £15, students/concessions £5

Booking is online via the website: www.nua.ac.uk/thegallery

Tuesday 7 February to 18 March 2017

JERWOOD PAINTING FELLOWSHIPS

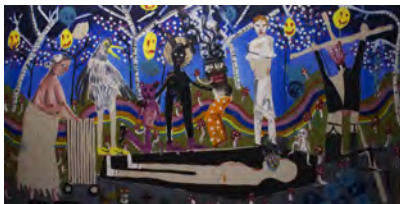
An exhibition of painting by the current Jerwood painting fellows: Francesca Blomfield, Archie Franks, Dale Lewis.



Top: Archie Franks 'Time'

Middle: Francesca Blomfield
 'Split Screen Ivy in Moonlight'

Bottom: Dale Lewis 'Acid Man's Funeral'



OPEN DAYS

Undergraduate 2016

Friday 30 September

Saturday 8 October

Friday 14 October

Friday 28 October

Saturday 5 November

Friday 9 December

Friday 6 January

Postgraduate 2016

For upcoming dates
visit www.nua.ac.uk/opendays

Work by Alice Potts
BA (Hons) Fashion, at Graduate Fashion Week 2016

ANIMATION ARCHITECTURE

CREATIVE SCIENCE

FASHION FILM FINE ART

GAMES GRAPHIC DESIGN

ILLUSTRATION INTERIOR DESIGN

PHOTOGRAPHY TEXTILES VFX

NORWICH UNIVERSITY OF THE ARTS

We'd love to meet you

The best way to experience what NUA has to offer

is to see for yourself at one of our open days www.nua.ac.uk/opendays



North of the City – take a walk



The north of the city is rapidly becoming becoming a hot-spot for new artists and creative businesses.

Around Duke Street, Anglia Square, Pitt Street, Magdalen Street and St Augustines there is a new wave of artist-led regeneration. In all cities there is an area which gets a bit run down and property is left empty. As values drop, it becomes feasible for artists and start-up businesses to rent space. In some cases, enlightened developers allow artists to have spaces for 'meanwhile use' until areas can be redeveloped such as St Mary's and St George's Works just off Duke Street where the Shoe Factory Social Club and Lion House are accommodating artists and creative uses.

Informal galleries such as The Barber Shop in Magdalen Street, the Art Café, Nunnsyard, Yallops and Thirteen(a) in St Augustines Street and Print to the People, Men's Shed in Pitt Street. Norwich Hackspace, the Royal Drawing School and the Workrooms have settled in Lion House Studios in Muspole Street, right opposite the Muspole Street Studios which has accommodated artists and potters for many years. Many of the studios in this area run hands-on sessions in printmaking, pottery, drawing, textiles, illustration and painting.

Member-led group OUTPOST has run a gallery in Tombland for over 10 years and also manages around 80 artist studios in Gildengate House in Anglia Square. These all give opportunities to emerging artists, students and creatives of all ages.

As well as galleries and art spaces, there are vintage shops, makerspaces and artist shops, ethnic foods, and antique and collectibles in dig-around caverns where you will find interesting bargains.

Take a walk along Magdalen Street and find Anteros Arts, North Café, Looses, The Dandy Horse (bike and coffee shop), Aladdins Cave, The Barber Shop (gallery space) the Make Place and much more.

So this is definitely an area of the city to have a poke around in and explore – please do!



Exhibition

Wednesday 12 to
Sunday 16 October 2016

ANNA-LISE HORSLEY

Recent paintings

Nunnsyard Gallery
22-25 St Augustines Street
Norwich NR3 3BY

Exhibition open 11am-5pm daily
Private view 12 October 6-8pm

Nunnsyard is a new contemporary exhibition space
showing the work of artists from all over the world.

Anna-Lise Horsley shows recent paintings using
imagery from her collection of old botany and
anatomy books, her own photographs of natural
forms, x-rays and shadows.

anna-lisehorsley.webs.com
lisehorsley@gmail.com
nunnsyard.co.uk



Tingueley's Cocktail Poodle

OUTPOST



OUTPOST is an artist-run gallery, based in Norwich, committed to the uncompromising presentation of contemporary art. Since its founding in November 2004, OUTPOST has established itself as a leading centre for artist activity in the east of England.

Currently OUTPOST produces a core programme of seven exhibitions per year alongside a series of events, offsite projects, collaborations and commissioned artist editions.

OUTPOST Gallery, 10b Wensum Street, Tombland,
Norwich, Norfolk NR3 1HR Tel: 01603 612428

Since occupying Gildengate House on Upper Green Lane in 2009, OUTPOST has converted the large open plan interior of the former office block into affordable artist studio spaces. The studios accommodate around 85 Norwich-based artists, ranging from recent graduates to internationally exhibiting practitioners. As well as housing studio spaces, Gildengate House acts as a satellite venue for OUTPOST's additional exhibition and events programme, hosting residencies, artist talks, film screenings and performances. OUTPOST operates a membership scheme and receives support from Arts Council England.

At Tombland, OUTPOST Gallery

Friday 7 to Sunday 30 October 2016

CHARLIE DUCK SCHLEP

Friday 11 November to Sunday 4 December 2016

LEE GRANDJEAN

At Gildengate House, OUTPOST Studios

Friday 3 September to Sunday 2 October 2016

HEATHER MARSHALL IN RESIDENCE

For updates follow OUTPOST on Facebook, Instagram and Twitter. Enquiries email questions@norwichoutpost.org.

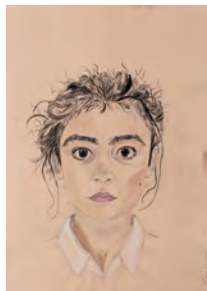
OUTPOST Studios, Gildengate House, 1 Upper Green Lane,
Norwich NR3 1AX.

Royal Drawing School



The Royal Drawing School is an independent, not-for-profit resource that aims to raise the standard and profile of drawing through teaching and practice. It is one of only a few institutions in the world offering in-depth, quality tuition in drawing from observation.

Drawing is a primary language natural to all human beings, and fundamental to all aspects of learning and thinking from childhood onwards. It is a crucial route to innovation across the creative disciplines and beyond, from fashion, fine art and animation to filmmaking, product design and engineering. For some people, drawing is the easiest way of thinking.



Lila 14 years



By offering tuition and resources to art students, artists, children and the public, it aims to address the permanent need for high-quality drawing teaching in the UK, filling a gap left by the steady erosion of observational drawing from the study of art in higher education and in schools.

Founded in 2000 by HRH The Prince of Wales and artist Catherine Goodman as The Prince's Drawing School, it became the Royal Drawing School in 2014.

For more information visit royaldrawingschool.org or phone 020 7613 8568

Drawing Club for 10–14 year olds at Lion House, Muspole Street, Norwich

The Royal Drawing School will be offering weekly Drawing Clubs at the 1st floor studio in Lion House from 1 October–3 December 2016 and then after Christmas in the Spring term of 2017.

Drawing Clubs are for 10 to 14 year olds who have a passion for drawing and want to learn and improve their skills.

Regular drawing at any age can enhance focus and concentration and increase self-esteem, and this can be especially beneficial for school-age children.

The Drawing Clubs help children retain and develop these drawing abilities and sustain their enthusiasm for self-expression within an artist-led environment.

The skills learned can also support students' pursuit of a wide range of creative subjects in school, further and higher education, and open doors to careers in the arts, design, architecture, and science.

The Drawing Clubs are led by professional artists who are alumni of the Royal Drawing School's postgraduate programme



Lion House



DATES AND TIMES

Venue: Lion House, St George's Works,
Muspole Street, Norwich NR3 1DJ

Price: £150 for 10 sessions

Some scholarship places are available. Please apply using the application form on the website www.royaldrawingschool.org

EVERY SATURDAY

From 1 October 2016 to 3 December 2016
11am–1pm

2017 dates will be published on www.artinnorwich.org.uk

For more information and to book online, visit:
royaldrawingschool.org/courses/young-artists/drawing-clubs or phone 020 7613 8559

Sainsbury Centre for Visual Arts



The Sainsbury Centre for Visual Arts is one of the most prominent university art galleries in Britain, and one of the nation's principal centres for the study and presentation of art. Designed by acclaimed architect Norman Foster, it is one of the most important buildings of the late twentieth century.

The Centre owes its existence to the generosity of Robert and Lisa Sainsbury who donated their extraordinary art collection which includes works dating from prehistory to the present day from across the globe. Alongside this sits two further principle collections: The Anderson Collection of Art Nouveau, donated in 1978 by Sir Colin Anderson; and the University Collection of Abstract and Constructivist Art, Design & Architecture established by the University in 1968.

The Sainsbury Centre's art collections are displayed across the ground floor of the building whilst on the lower level are the magnificent newly-created exhibition galleries, providing the largest temporary exhibition space in the East of England.

The Sainsbury Centre offers an award-winning learning programme of gallery talks, lectures, and art workshops.

Open Tuesday–Friday 10am–6pm. Weekends 10am–5pm. admission to the building and permanent collection is free, special exhibitions may be subject to charges.

For more information and bookings visit www.scva.ac.uk

Special exhibitions

Saturday 15 October 2016 to Sunday 12 February 2017

FIJI: ART AND LIFE IN THE PACIFIC

The most comprehensive exhibition about Fiji and Fijian art ever assembled, Fiji: Art and Life in the Pacific will highlight exceptional collections from the UK and elsewhere, including the Fiji Museum. The exhibition will bring together beautiful historic objects such as wood sculpture, bowls, canoes, weapons, large painted barkcloths and finely crafted objects made of shell and whale ivory, as well as examples of contemporary art. Continuity of artistic practice in Fiji will be explored. Among the highlights will be a specially commissioned

26-ft sailing canoe and barkcloth wedding dresses. Over 250 objects, paintings, drawings and historic photographs will celebrate Fijian creativity and the important place of art in Fijian culture.

While many of the participating artists are recognised internationally, their collections are often and less well known, and the majority have never been seen in the UK before this major exhibition

Their collections range from mass-produced memorabilia to rare art and artefacts and from natural history specimens to curios and objects reflecting popular culture. These extraordinary collections help reveal the creative processes of some of the most important artists of the last 50 years.



Head, 19th century, Museum of Archaeology & Anthropology, University of Cambridge



*James Glen Wilson
Converted Fijians attacking
a 'heathen' fortified village
Vanua Levu 1856
Oil On Canvas*

Friday 11 November 2016
to Sunday 19 March 2017

MASTERS OF JAPANESE PHOTOGRAPHY

This exhibition explores the work of some of the most prominent Japanese photographers of the second half of the twentieth century, including Nobuyoshi Araki and Eikoh Hosoe. Witnesses to a generation that grew up in the aftermath of the Second

World War, their work addresses both their personal experiences and the evolution of Japanese society. From Araki's exuberant flowers to Hosoe's lyrical portraits, these fascinating images encapsulate the natural beauty and social complexity of Japan.

The exhibition will feature around 60 works drawn from artists' studios as well as from private collections. It will be the first exhibition on contemporary Japanese photography at the Sainsbury Centre, offering the unique opportunity to engage with a remarkable generation of photographers who transformed the genre.



*Nobuyoshi Araki, Untitled (Watermelon),
1991 Fuji Crystal RP print 50 x 60 cm
Signed in silver ink by the artist on the
recto © Nobuyoshi Araki*

Permanent collection

THE ROBERT & LISA SAINSBURY COLLECTION

The Living Area

The Robert and Lisa Sainsbury Collection features work spanning 5,000 years of human creativity. Permanently displayed in the Living Area Gallery, the collection includes major holdings of art from Oceania, Africa, the Americas, Asia, the ancient Mediterranean cultures of Egypt, Greece and Rome, Medieval Europe, and includes a significant number of works acknowledged as seminal examples of European modern art, such as Pablo Picasso, Edgar Degas, Francis Bacon, Jacob Epstein, Henry Moore, Alberto Giacometti and Amedeo Modigliani. In 1978 the presentation of ancient world art alongside modern masters was greeted as a revelation, today it continues to provide juxtapositions across time and culture that can inspire and surprise.

The East-End gallery provides the opportunity for greater freedom in examining the nature of the collections and their particular historical context. There is a regular programme of changing thematic displays with greater interpretation as well as featuring the collection of modern ceramics including masterpieces from Lucie Rie and Hans Coper. In addition, a flexible project space alongside shows contemporary or historical displays that relate and inform the Sainsbury Collection.

Opening times:
Tuesday–Friday
10am–6pm, Weekend
10am–5pm.
Closed on Mondays
and bank holidays.

Admission to the
Sainsbury Centre and
permanent collections
is free.

*Bucket man,
John Davies (b. 1946),
England, 1974, mixed media.
h. 210.0 cm;
base 152.4 x 137.2 cm.
Acquired from the artist in
1974.*



Tel: 01603 593199 email: scva@uea.ac.uk
Facebook: [/sainsburycentre](https://www.facebook.com/sainsburycentre) Twitter: [@sainsburycentre](https://twitter.com/sainsburycentre)



*Little Dancer Aged 14
1880–1881
Edgar Degas (1834–1917)
France
Bronze, fabric
UEA 2*

Did you know that:

- The Sainsbury Centre for Visual Arts was architect Sir Norman Foster's first public building
- The Robert and Lisa Sainsbury Collection is one of the few intact modernist collections of the 20th century and is of national and international importance
- The permanent collection is displayed in the Living Area gallery at SCVA, which is a reflection on how the Sainsburys surrounded themselves with art in their own home.

The South Asia Collection Museum and Shop



The Old Skating Rink Gallery

A unique collection of South Asian decorative arts housed in a Victorian architectural gem, a restored skating rink in the city centre.

South Asian arts and craft objects (woodwork, metalwork and textiles) are displayed together with a range of traditional furniture, architectural features, paintings and prints.

Close to the Forum and the market, the historic building on Bethel Street is also home to Country and Eastern, an emporium with decorative furnishings and gifts direct from South Asia.

Exhibitions

Highlights from the permanent collection are exhibited in regularly changing displays, including a gallery space which hosts exhibitions of paintings and prints from the 18th century, through to contemporary works.



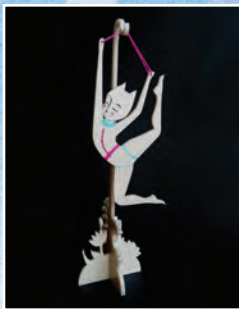
Bheem Ke Udar. Aquatint after James Baillie Fraser. 1820

Free entry.

Open daily except Sundays and bank holidays,
9.30am–5pm

For more details or to arrange tours, please contact:
The Old Skating Rink Gallery, 34–36 Bethel Street,
Norwich, Norfolk NR2 1NR
Tel: 01603 663890 Email: info@sadacc.co.uk
www.sadacc.co.uk





THE MYSTERY BOX OF NORFOLK ART

Do you want new pieces for your art collection or a present for someone who has everything?

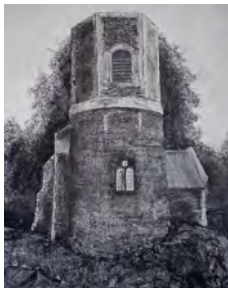
TAKEAWAY ART is a subscription service that curates and delivers original art produced in Norfolk - a new piece by a different artist every month.

Subscribe now from only £22/month:

TAKEAWAYART.CO.UK



St Etheldreda's Artists' Studios



Richard Cleland

St Etheldreda's Artists' Studios is housed in the beautiful church of St Etheldreda, opposite Wensum Lodge in King Street. It is the longest running artists' studios in the city; currently thirteen members have working spaces.

Every first Saturday of the month we are open from 12 to 4pm to show an exhibition of fresh work by one of our artists. All are welcome.

St Etheldreda's Artists Studios, King Street,
Norwich NR1 1QH. Telephone 01603 631928
Contact: Jack Godfrey, godfrey@talk.com or
Linda Chapman, lindachapman49@hotmail.com



Fliss Cary

Exhibitions

First Saturday openings from 12–4pm
(not September or January):

- 1 October: Fliss Cary
- 5 November: Cora Shearing
- 3 December: Group show
- 4 February: Group show – early works
- 4 March: Michael Chapman



Michael Chapman



Cora Shearing

Theatre Royal Norwich



Theatre Royal Norwich hosts four exhibitions each year by prominent, professional artists from the region. They are kindly sponsored by Targetfollow Estates Ltd. and curated by Sarah Cannell. The work is displayed in the Adnams Circle Bar on the first floor at the Theatre Royal.

All work can be purchased from the box office and the exhibitions are open 9.30am–6pm, Monday to Saturday.

Theatre Royal, Theatre Street, Norwich NR2 1RL
Email: sarah.cannell1@gmail.com

Exhibitions

Sunday 2 to Sunday 16 October 2016

UP & COMING

Norwich Theatre Royal Education Department:
An exhibition of A Level photography work from
Hellesdon High School.

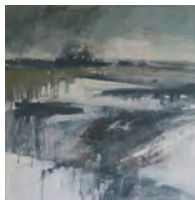
20 October 2016 to 23 January 2017

UP THE CITY

A group show with landscape and architectural themes featuring Patricia Davidson, Helen Derbyshire and Bill Hayward who are Suffolk artists based in Old Dairy Studios, Hungate Lane in Beccles, a market town on the Norfolk/Suffolk border.



Helen Derbyshire
'Halvergate Path'



Patricia Davidson 'Rain'



Bill Hayward 'Aldeburgh Roofs'



Tuesday 24 January to Sunday 23 April 2017

SHAHRAM SAADAT : SHIFTING LANDSCAPES

Fresh from the Tate Modern's Offprint fair Shahram will be exhibiting photographs from locations around Europe, with a special interest in architecture and people.

The 'Shifting Landscapes' exhibition is a collection of images that have been put together from a variety of travels. It is the artist's attempt to capture well photographed locations in a new light, with emphasis on structure, movement and perspective. By juxtaposing certain elements, it focusses on how we engage within our urban environment. This demonstrates that this it is not purely about how the landscape changes with different countries and cultures but also how our perception alters.

Monday 24 April to Sunday 23 July 2017

JOHN MIDGLEY : PAINTING THE BACK ROADS

A major collection of landscape paintings made from studies of off-the-beaten-tracks in Norfolk, where John 'paints the ordinary'.

John is a long standing member of the prestigious Norwich 20 Group. His paintings feature rich, glowing colours and carefully constructed compositions.



Exhibition programme supported by  Targetfollow

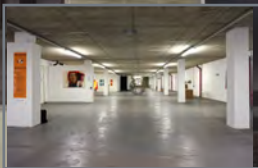
OPEN ACCESS PRINTMAKING



www.printtothepeople.com

Print to the People is an artist led, social enterprise dedicated to the production and promotion of traditional printmaking processes based in central Norwich.

We provide publicly accessible low cost, open access printmaking facilities in Screen printing, Intaglio printing and traditional Letterpress.



THE UNDERCROFT GALLERY

The Undercroft is a raw and robust space tucked away at the back of Norwich Market, under the Memorial Gardens in front of City Hall in the city centre.

Owned and managed by Norwich City Council it is made available for artists and groups to curate exhibitions at a minimal charge – contact clarehubery@norwich.gov.uk.

The entrance is tucked away down a set of steps – it is Norwich's stunning secret venue

EXHIBITIONS

6 to 29 October 2016

Lonely Arts Club presents 'Spiralling Upward' see page 19

5 December to 23 December

UNA Gallery presents Norwich Contemporaries see page 54

Closed January and February

March – 'Fresh' City College Norwich

For times, updates and extra exhibitions
www.artinnorwich.org.uk/the-undercroft

UNA in the Undercroft



UNA Gallery is an artist-led project based in Norwich that connects emerging practitioners to new audiences. UNA was formed in 2014 in response to artist demand for an arena that was intellectually demanding and accessible yet commercially sustainable and exciting.

UNA's grassroots and friendly approach seeks to engage, educate and entertain anyone with a passion for the arts.

UNA Gallery acts as an incubation space, online gallery and collaborative network for artists. Through workshops, lectures and peer critiques, UNA responds to the needs of artists as they seek to develop the skills needed to establish themselves in their creative community. UNA curates regular cultural events including exhibitions and artist talks which invite audiences to engage in all ways with contemporary art.



Julia Cameron

Monday 5 to Friday 23 December 2016, 11am–6pm
Undercroft Gallery, St Peter's Street, Norwich

NORWICH CONTEMPORARIES

Norwich Contemporaries features new work from 40 local contemporary and emerging artists working in a range of media including painting, photography, installation, video & film and illustration with the themes of 'Industrial. Colour' – though not necessarily together – and an emphasis on scale.

The exhibition is set in the raw and intriguing space of the Undercroft, beneath the Lutyens-designed Memorial Gardens in front of City Hall and at the back of Norwich Market. The exhibition is open 11am to 6pm daily.

Join UNA Gallery on social media
[Facebook.com/unaartgallery](https://www.facebook.com/unaartgallery)
unagallery.tumblr.com/ [Twitter@UnaGallery](https://twitter.com/UnaGallery)

Shoe Factory Social Club, St Mary's Works, St Mary's Plain, Norwich and Lion House, St George's Works, Muspole Street, Norwich



Two new areas of the city are set to become hotspots for creative development. Recently purchased by development company Shoe Quarter Ltd, the two sites at St Mary's Works and St George's Works on either side of Duke Street and bounded by the ring road, Oak Street, St Mary's Plain, Muspole Street and Colegate are destined for a mixed use development to be built over the next ten years.

In the meantime, some of the buildings awaiting development have been offered to artists and creative groups. The ground floor of St Mary's Works is The Shoe Factory Social Club, available for film showings, performances, exhibitions and shows that need space.

Lion House in Muspole Street is now home to Norwich Hackspace – a member-led maker space and The Workrooms – artists' studios which includes Aviva Leigh Creative Textiles, artist Suzanne Antonelli and ceramicist Ali Hewson. The Royal Drawing School starts Saturday morning drawing sessions for 10–14 year olds from 1 October.

For more information on the Shoe Factory Social Club
see www.shoefactorysocial.club

For information about Lion House
email info@norwichhackspace.org
or see www.norwichhackspace.org.uk
www.royaldrawingschool.org
www.avivaleigh.com

A quick guide to art in Norwich



View of Norwich from City Hall towards Norwich Castle

Norwich is a medieval city which, in its hey-day, rivalled London in terms of size and was, for many years, England's second city, being only 100 miles from the court of London. It was a wealthy city with its fame built on the textile trade, weaving and particularly wool. Nearly half of the population was French, Dutch or Flemish and engaged in the weaving trade – hence the name of the football club, the Canaries, called after the birds which the weavers kept for company.

In the Industrial Revolution, Norwich was off the beaten track for commerce and transport and so attracted artists, philosophers and radical thinkers, and was home to the famous Norwich School of Painters. Many religious non-conformists also settled here and the place became a hotbed for artists and writers, as it is today. It is also now a UNESCO City of Literature.

Amongst its many cultural assets Norwich can claim:

Norwich University of the Arts, one of the best universities for courses in animation and film, fine art and illustration, architecture, games design, graphic design, fashion, media and much more, including East Gallery ^{NUA} in St Andrew's Street.

Norwich Castle and the Sainsbury Centre for Visual Arts – world-class venues, attracting national-level touring shows, with permanent collections of World Art as well as work by Picasso, Henry Moore, Francis Bacon, Modigliani, Degas and local masters – Munnings and the Norwich School of Painters including contemporary work from artists such as Colin Self.

Norfolk and Norwich Festival in May, an international multi-arts annual festival with 17 days of concerts, outdoor arts and theatre, both mainstream and left-field, as well as an increasingly innovative and site-specific visual arts programme.

Norwich Arts Centre is a multi-arts venue with a visual art programme which includes live art, photography and digital art and Norwich Cathedral has an events programme with a regular cycle of exhibitions in the Hostry as well as the Hostry Festival.

There are a number of artist-led galleries and studios, notably OUTPOST, Dyad, Fairhurst, Yallops, Nunnsyard and St Etheldredas – and some well-established and very active, artists' groups such as Norfolk Contemporary Art Society, Anteros Arts Foundation, Norwich 20 Group and the Lonely Arts Club.

Venues such as the Forum, Assembly House and St Margaret's Church all support artists and host exhibitions along with several commercial galleries such as Art 18|21 and Mandell's. As well as Art in Norwich partners, there are over 800 practising visual artists and groups in Norfolk and a thriving underground arts scene in addition to the main institutions. www.artinnorwich.org.uk

WHERE TO GO IN NORFOLK

As well as exhibition venues listed in this booklet we have included other locations of interest and that often have exhibitions. The whole Norfolk coast is beautiful and varied and the coast road offers splendid views over saltmarshes and beaches. The north coast is especially good for bird watchers, seals, sailing and fishing.

A drive along the coast will take you through many picturesque villages with galleries and craft shops. Inland, market towns are also local hubs of activity. To the west and south are the Brecks – open heathland and forests.



KEY

- 30 St Margaret's Church, Cley
- 31 GroundWork Gallery
- 32 Norfolk Wildlife Trust at Cley Marshes Visitor Centre
- 33 River Waveney Sculpture Trail
- 34 Salthouse Church
- 35 Skippings Gallery
- 36 Wymondham Arts Centre
- 37 Mannington Hall & Gardens
- 38 The Old Workshop Gallery, Corpusty
- 39 Burnham Overy Staithe
- 40 Bayfield Hall, Holt

Other places to visit:

Ravensingham Centre, Ravensingham

Loddon Arts Centre, Loddon

Gunton Arms – houses the private collection of art dealer Ivor Braka

Felbrigg Hall and Holt Hall often have exhibitions

Holt is a beautiful market town with galleries and bookshops

Salt Glass Studios at Burnham Overy and Belfry Arts at Overstrand, Wells, Sheringham, Blakeney and Cromer are lovely for a day out as is the whole Norfolk coast –

see www.visitnorthnorfolk.com

See page 57 for a map of Norwich venues and contact details

THE OLD STABLES BAYFIELD HALL



Three miles from Holt, The Old Stables at Bayfield Hall is an interior designer's haven filled with amazing and hard-to-find antiques, sourced from across Europe as well as the UK. There are currently seven individual dealers to choose from at The Old Stables.

- Matthew Higham Antiques
- Allan Urquhart Design
- Old Painted Furniture
- Interior Deli
- Jane Cave
- Norfolk Rugs
- The English Lamp Company
- MD Cannell Antiques

Open: Wednesday to Sunday, 10am to 5pm.



The Old Stables, Bayfield Hall, Holt, Norfolk NR25 7JN
www.bayfieldhall.com/theoldstables

*Please note from December to March The Old Stables will close at 4pm on Sundays.
Appointments can be made by calling 01263 715538.*

Sainsbury Centre
for Visual Arts at UEA
approx 2 miles
no 25 bus

GALLERIES AND ART VENUES IN THE CITY OF NORWICH



Art in Norwich members and venue details

- 1 Anteros Arts Foundation, 7–15 Fye Bridge Street, NR3 1LJ
Tel: 01603 766129 www.aterosfoundation.com
- 2 Assembly House & Noverre Gallery, Theatre Street, NR2 1RQ
Tel: 01603 626402 www.assemblyhousenorwich.co.uk
- 3 Barber Shop Gallery, Magdalen Street, Norwich
- 4 East Gallery^{NUA}, St Andrew's Street, Norwich NR3 1BB
Tel: 01603 886385 www.nua.ac.uk
- 5 Fairhurst Gallery, Bedford Street, Norwich NR2 1AG
Tel: 01603 614214 www.fairhurstgallery.co.uk
- 6 The Forum, Millennium Plain, NR2 1TF
Tel: 01603 727950 www.theforumnorwich.co.uk
- 7 Greenhouse Gallery, 42–46 Bethel St, Norwich NR2 1NR
Tel: 01603 631007 www.greenhousetrust.co.uk
- 8 Hudson Gallery, 37 St Andrew's St, Norwich NR2 4TP
Tel: 01603 766220 www.hudsonarchitect.co.uk
- 9 Mandell's Gallery, Elm Hill, NR3 1HN
Tel: 01603 626892 www.mandellsgallery.co.uk
- 10 Moosey Art, 22 Bridewell Alley, Norwich NR2 1AQ
Tel: 07792 011541 www.mooseyart.co.uk
- 11 Norwich Arts Centre, St Benedicts Street, NR2 4PG
Tel: 01603 660352 www.norwichartscentre.co.uk
- 12 Norwich Castle Museum & Art Gallery, Norwich Castle, Castle Hill, NR1 3JU Tel: 01603 493625 (Mon–Fri)
www.museums.norfolk.gov.uk
- 13 Norwich Cathedral, The Close, Norwich NR1 4EH
Tel: 01603 218300 www.cathedral.org.uk
- 14 Norwich Studio Art Gallery, 77 Upper St Giles St, Norwich NR2 1AB Tel: 01603 492093 www.studioart.org.uk
- 15 Nunn's Yard, 31 St Augustine's Street NR3 3BY
Email : tonygeorge@nunnsyard.co.uk www.nunnsyard.co.uk
- 16 Norwich University of the Arts, St George's Building, St George's St, NR3 1BB Tel: 01603 610561 www.nua.ac.uk
- 17 Norwich Hackspace, Lion House, Muspole Street, Norwich
Tel: 07946 261651 www.norwichhackspace.org
- 18 OUTPOST Gallery, 10b Wensum Street, NR3 1HR
Tel: 01603 612428 www.norwichoutpost.org
- 19 Print to the People, 53–55 Pitt St, back of Anglia Square, Norwich, NR3 1DE www.printtothepeople.com
- 20 Sainsbury Centre for Visual Arts, University of East Anglia, NR4 7TJ Tel: 01603 593199 www.scva.ac.uk
- 21 St Etheldreda's Church, King Street, Norwich
- 22 South Asian Decorative Arts & Crafts Collection Trust, The Old Skating Rink Gallery, 34–36 Bethel Street, NR2 1NR
Tel 01603 663890 www.sadacc.co.uk
- 23 Thirteen(a) 13a St Augustine's Street NR3 3BY
Email: tonygeorge@nunnsyard.co.uk www.nunnsyard.co.uk
- 24 Targetfollow at Theatre Royal, Theatre Street, NR2 1RL
sarah.cannell1@gmail.com
- 25 Yallops Gallery, 59 St. Augustines Street, Norwich NR3 3BG
Email: tonygeorge@yallops.co.uk www.nunnsyard.co.uk

Venues used by members for exhibitions and events

- 26** St Margaret's Church, St Benedict's Street, Norwich NR2 4AQ *Not open all the time
- 27** The Undercroft, beneath Memorial Gardens, Norwich Market *Not open all the time email clare.hubery@norwich.gov.uk
- 28** The Crypt Gallery at Norwich School, The Cathedral Close, Norwich, Norfolk, NR1 4DD *Not open all the time
- 29** Dyad Collective, Dove Street Studios, Dove Street, Norwich *Not open to the public www.dovestreetstudios.com
- 30** Royal Drawing School and The Workrooms, 1st Floor, Lion House, St George's Works, Muspole Street, Norwich NR3 1DJ
- 31** Shoe Factory Social Club, St Mary's Works, St Mary's Plain, Norwich NR3 3AF www.shoefactorysocial.club

Member organisations without venues

Lonely Arts Club www.thelonelyartsclub.org.uk
 Norfolk & Norwich Festival www.nnfestival.org.uk
 Norfolk Contemporary Art Society www.n-cas.org.uk
 Norfolk & Norwich Art Circle www.nnartcircle.com
 Norwich 20 Group www.norwich20group.co.uk
 Original Projects; www.originalprojects.space
 Paint Out Norwich www.paintoutnorwich.org
 Young Norfolk Arts Trust www.ynaf.org.uk

Art in Norwich is produced and published by Marion Catlin,
 Culture Shift Norwich email: info@theshiftnorwich.org.uk
 Tel 07946 261651 www.theshiftnorwich.org.uk

Venues around Norfolk see map on page 76

- 30** Cley Contemporary Art, North Norfolk Exhibition Project, St Margaret's Church, Holt Road, Cley-next-the-Sea www.cleycontemporaryart.org
- 31** GroundWork Gallery, 17 Purfleet, King's Lynn, Norfolk PE30 1ER www.groundworkgallery.com
- 32** Norfolk Wildlife Trust Cley Marshes Visitor Centre, Coast Road, Cley-next-the-Sea, NR25 7SA Tel 01263 740008 www.norfolkwildlifetrust.org.uk
- 33** Waveney & Blyth Arts, Old Harleston Rd, Earsham, Bungay NR35 2AF www.waveneyandblytharts.com
- 34** Salthouse Church (St Nicholas') Cross Street, Salthouse, Norfolk NR25 7XQ – no website
- 35** Skippings Gallery, 133 King Street, Great Yarmouth, Norfolk NR30 8PB email skippingsgallery@gmail.com
- 36** Wymondham Arts Centre, 18 Church St, Wymondham NR18 0PH www.wymondhamarts.org
- 37** Mannington Gardens www.manningtongardens.co.uk
- 38** Old Workshop Gallery Corpusty www.corpustygallery.com
- 39** Burnham Overy Staithe

Other places to visit in Norfolk see map page 76

Felbrigg Hall	Holt
Gunton Arms	Holkham Hall
Barrington Farm	Sheringham
Narborough Hall	Blakeney

Art in Norwich partners are:



Great Art for Our Region

**SAINSBURY
CENTRE**
for Visual Arts



St Etheldreda
Artist Studios



NORWICH STUDIO
ART GALLERY

SADACC
Trust



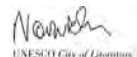
Norwich
Arts
Centre



HUDSONArchitects



Gallery IN THE LANES



'The city of Norwich has many fans, of which I am one. It has a fantastic and historic urban fabric, a glorious rural hinterland and an unparalleled coastline of which I am proud to be able to tell people. I support the football club here and applaud the initiatives which I see taking place all over the city, wrought by the many excellent cultural organisations who work together to ensure an excellent quality of life for the citizens and those who are lucky enough to visit or stay.'

Stephen Fry.

Art in Norwich comes out twice a year, Spring and Autumn and is funded by its partners working together to showcase the great art in Norwich and Norfolk all year and every year.

Thank you.

www.artinnorwich.org.uk

Printed by Micropress, Reydon, Suffolk www.micropress.co.uk

15 OCTOBER 2016 — 12 FEBRUARY 2017



ART & LIFE IN THE PACIFIC

Tickets available from scva.ac.uk

SAINSBURY

CENTRE

University of East Anglia, Norwich NR4 7TU

01603 593199 (Booking line open Mon - Fri, 9am-5pm)



MEDIA PARTNER



EXHIBITION PARTNER



September '16 – March '17



ART IN NORWICH

A round-up of visual art exhibitions and events and a guide to getting the best out of a visit to Norwich and Norfolk



Norwich, a very fine cultural city
best explore it!

Art in Norwich is produced by The Shift Norwich
and Norwich Visual Art Forum
www.artinnorwich.org.uk



Shift Norwich



Art in Norwich