

Art in Norwich

‘What’s on?’

a round-up of visual art, sculpture
and architectural events in Norwich

August 2015–March 2016

Exhibitions at a glance : August 2015–March 2016

Until 29 August	Norwich Arts Centre : TARDIS	24
Until 6 September	Norwich Castle : Artist Rooms : Jeff Koons	27
Until 26 Sept	Assembly House: Summer Show	8
Until 27 September	Theatre Royal : N20 Group Works on Paper	43
Until 27 Sept	Norwich Castle : Sawdust and Threads	29
Until 29 September	Norwich Cathedral : Ana Maria Pacheco	25
Until 6 March '16	Norwich Castle : John Sell Cotman	30
Until 6 March '16	Norwich Castle : Seeing the Light	30

AUGUST 2015

		page
1 Aug–6 Sept	Waveney River Sculpture Trail	44
3–8 August	The Forum : Life through a Lens	13
6–25 August	Norwich Cathedral : Broderer's Guild	25
7 August–5 Sept	Fairhurst Gallery : Alain Mansfield	10
10–27 August	Mandell's Gallery : Summer Show	19
11–21 August	The Forum : This is the Place	14
13–29 August	Moosey Art : Cook Pass Babbbridge	20
22 August	Waveney River Sculpture Trail : Dance Workshop	44
27 August	Waveney River Sculpture Trail : Curator's Guided Walk	44
30 August	Waveney River Sculpture Trail : Family Fun Day	44
31 August–3 Sept	The Forum : NNAB art exhibition	14

SEPTEMBER 2015

		page
4–9 September	Norwich University of the Arts : MA Degree Show	35
4 Sept–19 October	Norwich Cathedral Hostry : Edith Cavell	26
4 Sept–21 November	Norwich Cathedral Hostry : Passion of Edith Cavell	26
4–25 September	Norwich Arts Centre : Somewhereto_	24
6–10 September	The Forum : Lonely Arts Club : Looking Twice	14 & 17
6–26 September	Mandell's Gallery : Katarzyna Coleman	19
7 September	The Hostry : Hostry Festival launch	16
7–19 September	St Margaret's Church : Norwich Print Fair	31
8 & 9 September	Anteros Arts : Georgina Barker	6
8–26 September	The Undercroft : Lonely Arts Club : Looking Twice	17
10 Sept–Jan 2016	SADACC : South Asian Textiles	38



Cover: John Newland Pine Trees Holkham Beach

Note from the editor:

Welcome to Art in Norwich Autumn 2015

The year of excellence carries on with all of the major venues hitting us with some real blockbusters and the smaller galleries and arts groups continuing to populate the city with vibrant and frequent exhibitions so that the whole place feels as though it is bubbling and boiling.

There are new galleries too – Moosey Art in Bridewell Alley is specialising in street art and illustration, with exhibitions changing every three to four weeks. Fairhurst Gallery in Bedford Street is under new ownership and has got off to a great start with monthly exhibitions of contemporary art.

In the At a Glance to the left, the darker blue strips indicate longer-running exhibitions that last beyond the month in which they start.

11–25 September	Fairhurst Gallery : Bruer Tidman	10
12 & 13 September	Anteros Arts : Spoon Carving Workshop	6
12 & 13 September	St. Etheldreda's Studios : Group Exhibition	42
12 Sept–24 Jan	SCVA : Magnificent Obsessions: The Artist as Collector	39
14–18 September	The Forum : Perspectives 4	15
15 September	The Forum Curve Auditorium : Talk: Joseph Cornell	23
29 Sept–10 October	Assembly House : Helen Breach	16
29 Sept–11 October	Theatre Royal : Up and Coming photography exhibition	43

OCTOBER 2015

page

2 Oct–9 Jan	Assembly House : Wonders Of Winter	8
1–31 October	Norwich Arts Centre : Richard Shashame	24
3–31 October	Fairhurst Gallery : Will Teather	10
3 Oct–3 Jan '16	Norwich Castle : Build Your Own : Tools for Sharing	28
3 October	St Etheldreda's Studios : Fliss Cary	42
4–24 October	Mandell's Gallery : Emrys Parry	19
5 Oct–9 Nov	Anteros Arts : FANN 16	6
7 October onwards	Norwich Castle : Collecting in East Anglia	29
10 October	Anteros Arts : Felting Workshop	6
13–24 October	Anteros Arts : Gemma Khawaja and Ruth Brumby	6
15 Oct–24 Jan	Theatre Royal : Martin Laurance	43
15–31 October	Moosey Art : Mr Penfold	20
19–31 October	Hostry Festival : various events at Hostry, Jarrolds & Maddermarket	16
24–31 October	Hostry at Norwich Cathedral : Paint Out Norwich	26

NOVEMBER 2015

page

1–6 November	The Forum : NN Art Circle 189th exhibition	21
3–28 November	Anteros Arts : 5 Women	6
4–6 November	Norwich Arts Centre : Paul Foot Retrospective	24
4–23 November	Norwich Cathedral : Douglas Farthing	26
5–21 November	Moosey Art : Anmar Mirza	20
6–28 November	Fairhurst Gallery : Polly Cruse/Joceline Wickham	10
7 Nov–20 March '16	SCVA : Alphonse Mucha	40
7 November	St. Etheldreda's Studios : Helen Tobin	42
8–28 November	Mandell's Gallery : Bruer Tidman & Bruce Gernand	19
10–28 November	Anteros Arts : Will Teather & Tony Asbury	6



The Undercroft, situated beneath the Memorial Gardens in front of City Hall and at the back of Norwich Market

Norwich Castle has Build Your Own: Tools for Sharing from 3 October to 3 January. Norwich Hackspace will be running a 3D printing project as part of the exhibition in the Castle, making prosthetic hands for children without fingers. See www.norwichhackspace.org for details

In 2016 Norwich is hosting British Art Show 8, a major touring show produced by the Hayward. It is a massive contemporary art event which happens every five years and June 2016 will see it open here in Norwich after a stay in Leeds and Edinburgh and on its way to Southampton. It is a major coup for Norwich and will attract visitors by the score. There will be related events around the city and beyond so keep an eye out for updates. At the same time, the Sainsbury Centre will be hosting a special exhibition of art from Fiji, very different.

Norwich Fringe Festival will be taking over the Undercroft for October with an emphasis on arts and well-being. See www.norwichfringefestival.co.uk

11 November	The Forum Curve Auditorium : Talk by Professor Neil Powell	23
12 Nov–23 Dec	Norwich Arts Centre : Eyebrow Arts	24
26 Nov–8 December	Norwich Cathedral : Norfolk Contemporary Craft Society	26
26 Nov–12 Dec	Moosey Art : Parlee Erz	20
27 November	City Hall : NCAS Biennial Art Auction	23
28/29 November	Assembly House Christmas Fair	9

DECEMBER 2015

1–12 December	Anteros Arts : John Midgely	6
5–24 December	Fairhurst Gallery : Institute of E. Anglian Artists	10
5 Dec to 2 January	Mandell's Gallery : Christmas Show	19
5 December	St. Etheldreda's Studios : Group exhibition	42
11 Dec–11 January	Hostry at Norwich Cathedral : Richard Denyer	26

JANUARY 2016

page

8 Jan–20 February	Norwich Arts Centre : Matt Mackman	24
25 Jan–5 February	The Forum : Wex Photography	15
27 Jan–23 April	Theatre Royal : Fiona Roberts	43

FEBRUARY 2016

page

4–20 February	Moosey Art : Adam Batchelor	20
6 Feb–30 May	Norwich Castle : Vikings Guide to Deadly Dragons	28
6 February	St. Etheldreda's Studios : Stephen Palmer	42

MARCH 2016

page

7–19 March	Anteros Arts: Howard Temperly	6
12 March–7 August	SCVA : Fiji: Art and Life in the Pacific	40
17 March–2 April	Moosey Art : Jamie Andrews	20

APRIL 2016

page

5–16 April	Anteros Arts : Juliet Wimhurst Solo Show	6
19–30 April	Anteros Arts : Elizabeth Kozmian Solo Show	6
23 April–25 Sept	SCVA : Alberto Giacometti	40

ADVANCE NOTICE : MAY 2016

page

3 to 14 May	Anteros Arts : Mari French	6
-------------	----------------------------	---



Art in Norwich is produced by Culture Shift in association with Norwich Visual Art Forum as a companion to **Music in Norwich**, a roundup of concerts and music events in Norwich which you can find on www.musicinnorwich.org.uk or printed copies around the city. The next edition is due out in September 2015 lasting to April 2016.

More information about Culture Shift can found at www.theshiftnorwich.org.uk, where there is an overview of Norwich culture and other useful information.

You can also sign up for culture updates via Culture Shift on the website.

Errors and omissions excepted, info is checked as well as possible but cannot be guaranteed.

If you require copies to display please email info@theshiftnorwich.org.uk

About Art in Norwich

This programme is the result of a collaboration of the Norwich Visual Art Forum, a number of organisations who promote visual art, public art, craft and architecture in and around Norwich. The aim is to gather visual art listings in one place so that they are easy to find and to offer an overview of art activity and infrastructure across the city and throughout the year. The Norwich Visual Art Forum is a self-supporting partnership of visual art groups and organisations active in Norwich and the surrounding area.

We hope you will keep this booklet safe as it covers six months' programming. Because of space limitations and lots going on, exhibition and event details are brief but you can find out more from individual organisations and venues from their own websites. See page 47 for contact and venue details.

Please also visit our website at www.artinnorwich.org.uk where you can download a pdf of this programme.

Important: All information is subject to change - please check with individual organisations before travelling to an event.

Image : Damien Hirst Birds display. Murderme collection



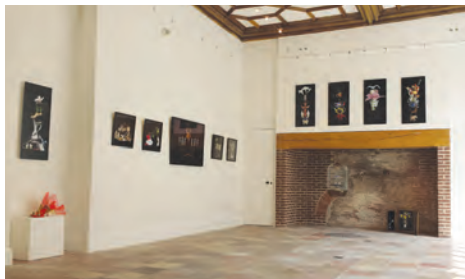
**SAINSBURY
CENTRE**
for Visual Arts

www.scva.ac.uk

**Magnificent Obsessions:
The Artist as Collector**

12 September 2015
to 24 January 2016

Anteros Arts Foundation



The Anteros Arts Foundation is a charity which supports and promotes the arts in Norwich. We aim to create a relaxing space for creative people to use and enjoy.

We offer weekend and evening classes in drawing, painting and other fine art skills, we have an open access art reference library and three gallery spaces all housed in a beautiful and important heritage site - the Tudor merchant's house on Fye Bridge.

Free entry. For more information visit anterosfoundation.com or call 01603 766129

Anteros Arts Foundation registered charity no.1135692

Exhibitions and workshops

8 & 9 September 2015:

GEORGINA BARKER

landscapes, oil on canvas

12 & 13 September 2015: **SPOON**

CARVING WORKSHOP with Jason Parr *Free event*

29 September to 10 October: Helen Breach, bright architectural paintings

5 October to 9 November 2015: **FANN 16**

FESTIVAL OF ARCHITECTURE Peter Wylie exhibition

10 October 2015: **MAGDALEN STREET CELEBRATION**

Felting workshop

13 to 24 October 2015: **GEMMA KHAWAJA AND RUTH BRUMBY**, fine art paper exhibition

3 to 28 November 2015: **5 WOMEN**, group exhibition

10 to 28 November '15: **WILL TEATHER & TONY ASBURY**
Art in the Age of Digital Reproduction Series

1 to 12 December: **JOHN MIDGELY**, abstract oil paintings

7 to 19 March 2016: **HOWARD TEMPERLY**, digital images

5 to 16 April 2016: **JULIET WIMHURST SOLO SHOW**,
drawings and paintings

19 to 30 April 2016: **ELIZABETH KOZMIAN SOLO SHOW**,
paintings and papercuts

3 to 14 May 2016: **MARI FRENCH**, abstract oil paintings.





In the incredible listed building, The Old Skating Rink, Art 18/21 holds exhibitions of leading contemporary British and South Asian artists. We bring the most exciting work from established and emerging talent to the UK and are pleased to represent Norwich and the UK at International art fairs around the world.

Since 2008 Art 18/21 have represented the young British artist Alec Cumming.

Art 18|21 Art Gallery & Advisors
The Old Gallery Skating Rink, 34-36 Bethel Street,
Norwich, NR2 1NR Tel: +44 (0) 7879673419
email: laura@art1821.com www.art1821.com

Exhibitions



Tuesday 8 September to
Wednesday 21 October 2015

**ALEC CUMMING
NEW PAINTINGS**

The Atkinson Gallery, Millfield
School, Somerset

Alec Cumming

Sunday 11 October
to Saturday 21 November 2015

**HORMAZD NARIELWALLA,
HAUTE COLLAGE**

Part of the Cloth Exhibition in
Association with The SADACC Trust
see page 38.

Tuesday 6 October 2015
BOOK LAUNCH FOR TARA BOOKS

Including an exhibition of India's leading Tribal artists.

Saturday 28 November 2015
CHRISTMAS FEAST

Featuring work by leading contemporary British and
South Asian artists.

For 2016 exhibitions please see www.art1821.com



Hormazd

The Assembly House and Noverre Gallery & Shop



The Assembly House is a proud supporter of the arts and hosts art exhibitions, concerts and plays on a regular basis. The attractive Noverre Gallery & Shop sells British art and crafts including prints, ceramics, jewellery, cards and wrapping paper, including a collection of attractive items by resident artist Lottie Day.

A variety of exciting exhibitions is planned this year and further information on all Arts events can be found in the quarterly Assembly House Arts Programme & Brochure, available at The Assembly House and online at www.assemblyhousenorwich.co.uk.

All exhibitions are open from 10am–6pm, Tuesday to Saturday, and admission is free.

Exhibitions

Until Saturday 26 September 2015
Tuesday to Saturday, 10am to 6pm
SENSATIONAL SUMMER SHOW

The Assembly House continues to celebrate the best of summer with a bright and beautiful exhibition of artwork from across the country. Visit The Noverre Gallery for this seasonal exhibition which includes work by Andrew Waddington, Bruce Pearson, Kate Heiss, Catherine Bowdler, Glynn Thomas, Ian O'Halloran, Elaine Marshall and Lucie Sheridan. The exhibition continues in The Hobart Room and The Gallery Cabinets.

Friday 2 October 2015 to Saturday 9 January 2016
Tuesday to Saturday 10am–5pm
THE WONDERS OF WINTER

The Noverre Gallery will celebrate the beauty of the winter months with a new exhibition featuring print-makers from around the UK.

Prints will be available to buy from the gallery and through www.noverregallery.co.uk. More information on 01603 728992 and at [Facebook.com/noverregallery](https://www.facebook.com/noverregallery) and [Twitter@noverregallery](https://twitter.com/noverregallery)



Saturday 28 November
10am to 5pm
Sunday 29 November
11am to 4pm

ASSEMBLY HOUSE CHRISTMAS FAIR



Visit The Assembly House at the end of November for the colourful Christmas Fair. This popular annual event features a host of seasonal items that are perfect for Christmas presents and stocking fillers. Browse among the stalls selling hand-made Christmas decorations, edible festive treats, jewellery, pottery, woodcraft, glassware, clothes, knitwear, toys, games, textiles and much more.

The Assembly House is also home to a welcoming Café/ Bar and Restaurant and is well-known for its wonderful coffee and cakes and traditional afternoon tea. It is worth visiting just for its stunning Georgian interior. The building is located next to the Norwich Theatre Royal and the pre-theatre dinner is also very popular.

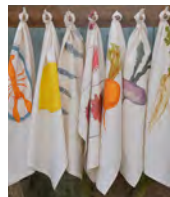
MADE BY LOTTIE DAY

Talented textile artist Lottie Day designs and produces hand-printed, hand-made products from her workshop in The Noverre Gallery. These lovely items are ideal for use in the home and garden and make wonderful presents for friends and family. Lottie's line-drawn illustrations are screen-printed on to canvas and adapted into products such as cushions, deckchairs, aprons, tea towels and lampshades. Meanwhile, her hand-sewn canvas bags feature unique handles adapted from recycled belts, sourced from local charity shops and car boot sales.

www.madebylottieday.com
Facebook: Made By Lottie Day
Twitter @MadeByLottieDay

For information please contact:
The Assembly House, Theatre Street,
Norwich, NR2 1RQ
Tel: 01603 626402
www.assemblyhousenorwich.co.uk

Registered charity no: RCN 1111391.



Fairhurst Gallery



Established in 1949, the Fairhurst Gallery and Picture Framers is a hidden gem in the historic centre of Norwich in Bedford Street. The framing workshop offers artistic services of the highest quality and the Gallery champions contemporary fine art.

Tucked away in the Norwich Lanes, once a 17th century skittle alley and formerly the Cat Trap jazz club, the Fairhurst is a unique and charming gallery space. There are regular exhibitions platforming the region's talent.

Admission free

**Opening times 9.30-5.30 Monday-Friday
10am-2pm Saturday**

**Tel: 01603 614214 fairhurstgallery@gmail.com
www.fairhurstgallery.co.uk**

Exhibitions

Friday 7 August to Saturday 5 September

ALAIN MANSFIELD: ACROBALANCE

An exhibition of work from this sculptor, land artist and photographer which explores balance and tension.

Friday 11 to Friday 25 September 2015

BRÜER TIDMAN: NEW WORKS ON PAPER

Winner of the Holt Festival Art Prize 2015 Brüer Tidman is endlessly experimental with figures, space and abstracted forms. This exhibition brings together new works on paper as well as some larger scale paintings.

Saturday 3 to Saturday 31 October 2015

WILL TEATHER: MULTIVERSES

Will Teather is well-known for creating artworks that combine an unusual imagination with a mastery of traditional skills.

Friday 6 to Saturday 28 November 2015

**POLLY CRUSE & JOCELINE WICKHAM:
CONTEMPLATIONS**

Contemporary still life. Photographs by Polly Cruse, paintings by Joceline Wickham.

Saturday 5 to Thursday 24 December 2015

**INSTITUTE OF EAST ANGLIAN ARTISTS:
CHRISTMAS EXHIBITION**

A group show from the members.



*Polly Cruse and
Joceline Wickham*

FAIRHURST GALLERY

WEBSDALES COURT, BEDFORD STREET, NORWICH NR2 1AR | TEL 01603 614214



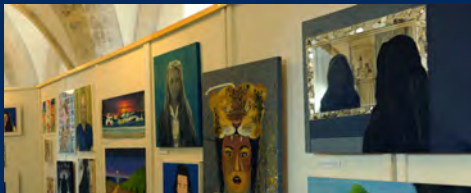
IEA MEMBERS' CHRISTMAS EXHIBITION

A GROUP SHOW FROM THE MEMBERS OF THE INSTITUTE OF EAST ANGLIAN ARTISTS

5TH - 24TH DECEMBER

IEA
Institute of East Anglian Artists

WWW.FAIRHURSTGALLERY.CO.UK



NORWICH SCHOOL

Inspiration for life

Join us at Open Morning - 19th September 2015

www.norwich-school.org.uk

The Forum



The Forum, right in the heart of Norwich city centre, is home to a year-round programme of free exhibitions, activities, markets and digital shows. It's also a great place to grab a coffee, a pizza or, of course, to explore the busiest public library in the UK.

The Forum's website has information on day-to-day events going on in the huge, glass Atrium, and in the Gallery (formerly Fusion). There are also courses, classes and talks in the library and regular music and conversation gatherings in Café Bar Marzano.

You can follow The Forum on Twitter – @TheForumNorwich – and Facebook – The Forum, Norwich – for updates, images and videos.

Our programme of events is already packed with an eclectic mix of art, literature, dance, music, sport, nature and heritage. The Forum is open seven days a week from 7am to midnight, with plentiful parking underneath. We have regular shows by local artists and craftspeople. This is just a selection so please visit the website for updated information: www.theforumnorwich.co.uk

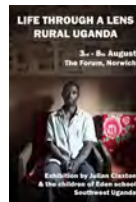
Selection of exhibitions

Monday 3 to Saturday 8 August 2015

9am–5pm

LIFE THROUGH A LENS

Norfolk-based photographer Julian Claxton spent four weeks in south-west Uganda, teaching photography at a small village school.



He took donated cameras and rolls of film and set the children of Eden School a task; to photograph everything and anything important to them.

The children were able to use a camera for the first time, understand the principles of photography and see their vision come to life in photographic prints.

This two-week exhibition features a selection of images taken by the children and Julian's own photographs of his time in Uganda. A selection of video and sound clips will also feature in the exhibition.

To see more visit www.julianclaxtonphotography.com



Tuesday 11 to Friday 21 August 2015, 9am–5pm
THIS IS THE PLACE

A photographic project creating a portrait of the people who live and work on Magdalen Street in Norwich.

Magdalen Street is a particularly multicultural part of the city and has a diverse range of businesses and shops.

Katherine Mager, the artist, says: *I live on Magdalen Road, so this is my home, my area. I walk down the street nearly every day. I know the shops and some of the shop owners well and wish to bring all of these people together in an exhibition to celebrate this diverse and vibrant street.*

Another interesting aspect of the street is that it is constantly changing, new shops open and close and

there is currently a large redevelopment project. There is emphasis on regeneration and retaining heritage. Now is a perfect opportunity to create a portrait of this street and its community.

Monday 31 August to Thursday 3 September 2015
NNAB ART EXHIBITION

Norfolk and Norwich Association for the Blind (NNAB) celebrates its 210th Anniversary in 2015. Over these few days, work done by blind and visually impaired members of The NNAB activity centre will be on display.

Find more information of The NNAB at www.nnab.org.uk

Sunday 6 to Thursday 10 September 2015, 9am–5pm
LONELY ARTS CLUB 2015

The Lonely Arts Club are back with their annual show of mixed art from their members. The Norwich-based group includes painters, sculptors, constructivists, printmakers and photographers – so expect a variety of different pieces on show!

For more information visit
www.thelonelyartsclub.org.uk





Monday 14 to Friday 18 September 2015
9am-8.30pm
PERSPECTIVES 4

Perspectives 4 is the fourth art exhibition at The Forum by Wymondham College.

It will be displaying work from art students and will feature a selection of fine art, photography and textile design from GCSE and A Level students. There is a range of personal styles, techniques and subject matter.

For more info on Wymondham College visit www.wymondhamcollege.org



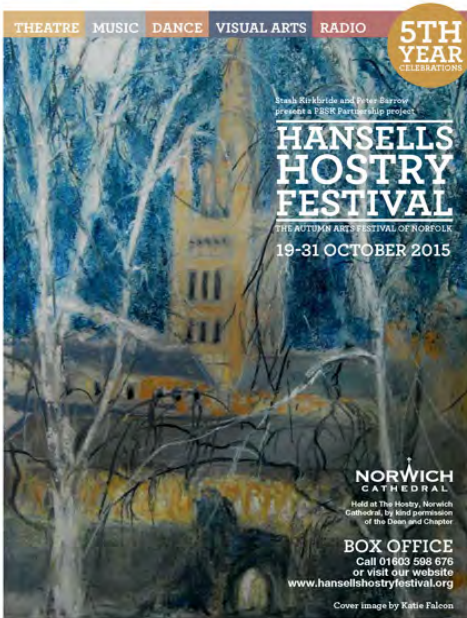
Monday 25 January to Friday 5 February 2016
WEX WINNERS PHOTOGRAPHY COMPETITION 2016

The inaugural Wex Photographer of the Year exhibition Based on #WexMondays, Wex Photographic's weekly photo competition on Twitter, the exhibition will feature all the winning images from the year, covering a range of subjects, submitted by photographers from across the UK.

#WexMondays invites submissions from across the Wex Photographic social community, with the only rule of entry being that the image must have been taken the previous week. This approach has led to a unique collection of images from a variety of genres, taken by photographers of all skill levels.

The exhibition will celebrate this collection and offer visitors the opportunity to be inspired by some breath-taking shots, learn about the people behind the images and mingle with like-minded photography enthusiasts.

More info wexphotographic.com



HOSTRY FESTIVAL AT A GLANCE

LAUNCH NIGHT AT THE HOSTRY Monday 7 September
7pm to 10pm Free – book tickets in advance

TOTAL ENSEMBLE THEATRE COMPANY WORKSHOP – includes
aftershow reception Saturday 24 October and Saturday 31 October
2pm to 3.30pm Tickets £10, concs £8

LISA CASSIDY 'LADY MACBETH' OPERA Saturday 24 October 6.30pm
Tickets £12, concs £10

CHAMBER ORCHESTRA ANGLIA YOUTHFUL GENIUS (Classical
Concert) Saturday 24 October 8pm Tickets £15, concs £12

ADRIAN WRIGHT SPREAD A LITTLE HAPPINESS
Wednesday 28 October and Thursday 29 October 1pm to 2pm
Tickets £12, concs £10

JARROLD AUTHOR IN PROFILE at The Hostry
Friday 30 October 1pm to 2.30pm Tickets £9, concs £7

STORY TELLING AT JARROLD'S STORE Saturday 31 October
11am, 12pm & 1pm Free ticketed event

HANSSELLS HOSTRY FESTIVAL WRAP PARTY at
The Maddermarket Gallery/Bar Saturday 31 October 11pm to 2am
Free ticketed event pre-booked only

You will find all these plus other entirely original commissions on
the website www.hostryfestival.org

Principal Sponsor
Hansells
Wholesaler and Provider of Stationery

Media Partners
Eastern Daily Press
RADIO NORFOLK

Supported by
Booze Bonja
TRUTHFUL AND DECENT
Yengroup
YOUNG ENTREPRENEURS GROUP
VOLUNTARY NORFOLK

Book tickets at www.hostryfestival.org or from
Norwich Theatre Royal on 01603 598 676
Follow us on Facebook and Twitter @Hostryfestival

For full details and announcements during the lead up to the festival
please follow us on social media and check the website, newspaper
and local radio stations.

Lonely Arts Club



Jan Crombie

The Lonely Arts Club, an eclectic group of painters, sculptors, print-makers, photographers and installation artists, follow up last year's successful shows with two exhibitions in the city centre this September.

The aim of the club is to enable its members, based in the eastern region, to exhibit together in high-profile spaces in and around Norwich, East Anglia and further afield.

There have been many changes over the last year, and we are pleased to welcome new members exhibiting with us for the first time, ensuring the club continues to evolve and diversify, bringing the best of contemporary art in the region to new audiences.

Exhibitions

Sunday 6 to Thursday 10

September 2015

The Forum, Millennium Plain,
Norwich

LOOKING TWICE

Tuesday 8 to Saturday 26

September 2015

The Undercroft, beneath the
War Memorial

LOOKING TWICE

Open Tuesday to Saturday 12-5pm

Closed Monday

www.thelonelyartsclub.org.uk



Peter Williams



George Pfeiffer



Sophie Eade

AUGUST 2015 TO JANUARY 2016



**DRAMA • MUSIC •
COMEDY CABARET •
FILM • TALKS • VISUAL
ART • THEATRE CLASSES**



St John's Alley, Norwich NR2 1DR
www.maddermarket.co.uk 01603 620917

MADDERMARKET THEATRE EVENTS CALENDAR

The Maddermarket has regular Jazz events, Vintage & Retro Sale Rail and guest shows as well as an art gallery which changes monthly.

MURDER ON THE NILE : AGATHA CHRISTIE : 20-29 AUGUST
It should have been the holiday of a lifetime, but when you take what isn't yours, the past has a nasty habit of catching up...

AFTERNOON AT THE SEASIDE : AGATHA CHRISTIE
24-28 AUGUST

A refreshing seashore on an afternoon in 1954, beach huts, sandcastles and humour in this one act comedy.

THE DEEP BLUE SEA : TERENCE RATTIGAN
24 SEPTEMBER-3 OCTOBER

A moving portrait of forbidden love and its destructive power in post-war London, this play is often cited as Rattigan's best work.

BRONTË : POLLY TEALE : 22-31 OCTOBER
How did three Victorian spinsters living in isolation on the Yorkshire moors produce some of the greatest English novels?

STAR QUALITY : NOEL COWARD : 19-28 NOVEMBER
Coward's wickedly funny final play. Full of unforgettable characters and memorable lines.

THE LION, THE WITCH AND THE WARDROBE : GLYN ROBBINS
18 DECEMBER-2 JANUARY From the book by C.S. Lewis Peter, Susan and Edmund embark on a magical Mystery tour to the land of Narnia through the wardrobe. Wicked witches, evil and good battling it out in time honoured style.

THE STAR SPANGLED GIRL : NEIL SIMON : 22-30 JANUARY
Set in San Francisco in the 1960s, the play is a love triangle mixed with politics. Radical liberals struggling to make a living when an 'all American' girl moves next door and upsets the delicate balance of friendship.

Mandell's Gallery



Mandell's Gallery is one of Norwich and Norfolk's most respected commercial art galleries. Mandell's Gallery was founded in 1965. Originally specialising in 19th century Norwich School painters, the gallery has expanded greatly and now has a diverse collection of traditional and contemporary art, offering opportunities for many new and local artists as well as more established names. You are welcome to view the collection at the art gallery, situated on the beautiful and historic street of Elm Hill, near Norwich Cathedral.

More info www.mandellsgallery.co.uk Tel 01603 626892

Exhibitions

10 to 27 August 2015 **SUMMER SHOW**

This popular annual event is an eclectic mix of East Anglian based artists, both past and present, featuring paintings, prints and sculptures.

Saturday 6 to Saturday 26 September 2015

KATARZYNA COLEMAN

The monumental and elemental nature of structures set within the higgledy-piggledy, unarranged landscape near her studio in South Denes, Great Yarmouth.

Saturday 4 to Saturday 24 October 2015 **EMRYS PARRY**

The landscape of Llŷn and the peaks of Yr Eifl provide the fuel for Emrys's art. Paintings and mixed media shaped by Welsh tradition and mythology.

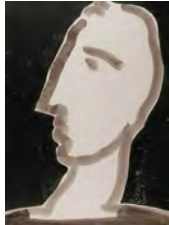
Saturday 8 to Saturday 28 November 2015

BRUER TIDMAN AND BRUCE GERNAND

Highly individual paintings exploring female and male, artist and model relationships and creation. Sculpture: animate forms, expressed through a tension between stillness and gesture.

5 December to 2 January 2016 **CHRISTMAS SHOW**

Take a break from the Christmas shopping, lift your spirits by viewing a selection of paintings, prints and sculptures with a seasonal edge.



Bruer Tidman Acrobat

Moosey Art



Moosey Art is a gallery showcasing the very best in urban/contemporary art by artists from all over world. Moosey Art also aims to give emerging Norwich artists the platform to get their work out there.

With a constant turn around of great exhibitions and countless projects in the pipeline, this is definitely a gallery to keep your eyes on.

For more info or to subscribe to our mailing list visit www.mooseyart.co.uk.
01603 928282

22 Bridewell Alley, Norwich, NR2 1AQ



Exhibitions

1 to 21 August **COOK PASS BABTRIDGE – ALAN PARTRIDGE**

Exhibition celebrating all that is Partridge. Featuring works from some of the world's greatest artists as well as a host of local talent.

15 to 31 October **MR PENFOLD**

Street artist Penfold will be bringing you a solo show featuring his skateboard influenced illustrations and distinctive abstract paintings.

5 to 21 November **M'LADY – ANMAR MIRZA**

We bring you the first solo exhibition from Norwich artist Anmar Mirza. Anmar fuses together a mixture of vibrant colour and classical painting to produce excellent contemporary pieces.

26 November to 12 December **PARLEE ERZ**

90s graffiti legend Parlee ERZ will be showcasing a selection of his hand-painted characters as well as paying homage to Star Wars.

4 to 20 February **ADAM BATCHELOR**

Adam's work looks at the relationship we now have with nature and illustrates the imbalance that we have incurred between the natural world and ourselves.

17 March to 2 April **JAMIE ANDREWS**

Solo exhibition from award-winning artist Jamie Andrews

Norfolk & Norwich Art Circle



Founded in 1885 the Norfolk and Norwich Art Circle celebrates its 130th anniversary as part of the Norfolk cultural scene in 2015. We exhibit at least twice a year in Norwich to showcase the best work of nearly 200 members. A wide range of work from traditional to modern in both subject and style can be seen from a group of professional and good amateur artists.

We provide a programme of demonstrations and talks for our members as well as visits to studios, galleries and workshops. The Art Circle also has its own Life Group and frequent social events.

Contact and Secretary, Geoff Kitchen:
geoffandvirginia@tiscali.co.uk. Tel: 01508 570732

Exhibition

Sunday 1 to Friday 6 November 2015

NORFOLK AND NORWICH ART CIRCLE 189th EXHIBITION OF PAINTINGS AND SCULPTURE

The Forum, Millennium Plain, Norwich Admission free.

More details about events available from our Secretary.



Left: *Lady In Red*, John Patchett



Right: *And Then It Rained*, Clive Brookes

We welcome new members from age 17 years upwards who will join a group who have had the likes of Sir Alfred Munnings; Edward Seago; Jeffery Camp; Michael Andrews; Mary Newcomb; Bernard Meadows; Martin Laurance and Liz Balkwill among them. Our members are successful with major galleries and at the RA.

Membership is £20 (£30 two at same address) per annum.
Membership, Jan Motley: jan.motley@btinternet.com
Tel: 01508 495320

Norfolk Contemporary Art Society



Norfolk Contemporary Art Society, founded in 1956, is a charitable association that promotes the interests of contemporary art in Norfolk. It has acquired its own collection of paintings and sculpture, which form the basis of the holdings in post-war art in the Norwich Castle Museum & Art Gallery.

NCAS also raises funds for public sculptures and has an on-loan collection of local artworks.

Supporting local art in many ways, NCAS mounts a lively programme of monthly events, mostly in Norwich, which includes lectures by artists, critics and art historians, gallery visits, auctions, private views and parties. They also curate exhibitions, including the biennial open show in the Forum.

Exhibitions, events & talks

ANA MARIA PACHECO

NCAS has curated a series of interlinked exhibitions of Pacheco's sculpture, ongoing in three locations in Norwich.

To 29 September:

Norwich Castle Museum

is showing *Enchanted Garden*, a new series of eight polychromed alabasters, in the Norman Keep.

To 29 September: Norwich Cathedral is showing the 2008 sculpture, *Shadows of the Wanderer* in the North Transept.

To 29 September: The Catholic Cathedral of St John the Baptist is showing *Study for Requiem (John the Baptist I)*, 1989 and *Study of Head (John the Baptist III)*, 1992.

Tuesday 15 September 2015, 7.30pm

in The Curve Auditorium in The Forum

JOSEPH CORNELL AND THE SURREALIST BOX

Krzysztof Fijalkowski & Robert Short in conversation

Members £2.50, non-members £4

To coincide with the Cornell retrospective at the Royal Academy, along with *Magnificent Obsessions: The Artist as Collector* at the Sainsbury Centre, Robert and Krzysztof will be discussing the boxed assemblages of the New York maverick surrealist obsessed with nostalgia



Ana Maria Pacheco, *Study for Requiem (John the Baptist)*



A Parrot for Juan Gris
 Winter 1953-54;
 Construction,
 Collection Paul Simon

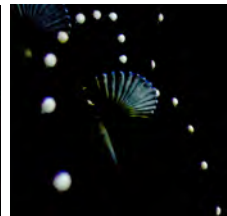
bric-a-brac, exotic avians, stellar constellations and Hollywood stars. They will consider them in the broader context of the box in art history and in the space somewhere between the object and the collage in Surrealism. Both Robert and Krzysztof have written extensively about Surrealism and both are known to have made collage boxes themselves.

Tuesday 27 October 2015, 7.30pm
in The Curve Auditorium in The Forum
TALK BY TROPE DESIGN

TROPE is a collaboration between contemporary artists Carol MacGillivray and Bruno Mathez. The Anglo-French team celebrates motion as a metaphor for being, by breathing life into inanimate objects. The artworks are playful and hybrid, made using an immersive system of concrete animation called the D-Scope® where time is literally choreographed. TROPE create audio-visual, kinetic worlds where an audience can move freely, encountering the art in a synaesthetic and immersive way. These are mixed reality, embodied artworks that cannot be understood viewed on a computer screen; 'You have to be there'. www.trope-design.com



Gaffer and Codex by Trope Design



Wednesday 11 November 2015, 7.30pm
in The Curve Auditorium in The Forum
DEBUGGED AND DEBUNKED: CURATORIAL MYTHS
AND MYSTERIES

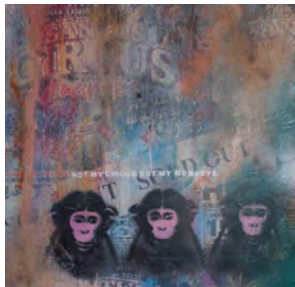
A talk by Professor Neil Powell, pro-vice chancellor
 Norwich University of the Arts.
 Members £2.50, non-members £4

Friday 27 November 2015, 7.30pm, viewing 6.30pm
THE NCAS BIENNIAL ART AUCTION
Council Chamber, Norwich City Hall

Every two years, ncas stages an auction to boost its funds for commissioning new art. It is great fun and also the place to pick up a bargain whilst supporting Norfolk art and artists.

For details of forthcoming events please check
www.n-cas.org.uk

Norwich Arts Centre



*Matt Mackman
Not My Circus,
Not My Monkeys*

Norwich Arts Centre is a multi-arts venue, delivering a programme of live music, theatre, live art, comedy, live literature, visual art, and Arts Awards. Exhibitions are wheelchair accessible, and free entry.

Please visit our website www.norwichartscentre.co.uk for more details.

Gallery opening times: Monday-Friday 1-5pm,
Saturdays 10am-6pm

Box office 01603 660352

Exhibitions & Education Coordinator:
bill@norwichartscentre.co.uk

51 St Benedicts Street, Norwich NR2 4PG

Exhibitions

To Saturday 29 August 2015

TARDIS : Art and philosophy by the young artists of Chapel Break Infant School.

Friday 4 to Friday 25 September 2015

SOMEWHERE TO_ Group exhibition by young people, working in conjunction with Creative Arts East.

Tuesday 1 to Saturday 31 October (Norwich Sound & Vision)

RICHARD SHASHAMANE

Large format photographic portraits of musicians.

Wednesday 4 to 6 November 2015

PAUL FOOT: A RETROSPECTIVE

Comedian Paul Foot presents an exhibition of paintings and limited edition stills to accompany his three night run of shows at Norwich Arts Centre.

Tuesday 12 November to Wednesday 23 December 2015

EYEBROW ARTS: Group exhibition featuring work by adults with learning disabilities organised by Eyebrow Arts.

Friday 8 January to Saturday 20 February 2016

MATT MACKMAN: An exhibition of work referencing Matt's 24 hour, meningitis-induced coma and the modern world of 24 hour advertising. Beauty and decay, life and death, light and dark, dreams and nightmares. These are the things that keep Matt awake (and painting) at night.

Norwich Cathedral



Located in the heart of Norwich in the beautiful Tombland area of the city, **Norwich Cathedral's Hostry Visitor and Education Centre** hosts a rolling programme of international, national and local exhibitions within the light and spacious exhibition hall.

As well as the exhibitions you can visit the awe-inspiring Cathedral, view the largest monastic cloister in England and enjoy the tranquillity of the Cathedral Close.

Exhibitions are in the Hostry Visitor & Education Centre, Monday to Saturday 9.30am–4.30pm and Sunday 12pm–3pm.

Exhibitions are open to all and admission is free.

Exhibitions



Shadows of the Wanderer Ana Maria Pacheco

To Sunday 27 September 2015, North Transept **ANA MARIA PACHECO: SHADOWS OF THE WANDERER**

Comprising of ten over life-size figures, each carved from a single lime tree, recalls the tale of Aeneas, who carries his father Anchises from the ruins of burning Troy, but it also powerfully resonates with contemporary issues, particularly those of exile, asylum, migration and the displacement of people.

Thursday 6 August to Tuesday 25 August 2015 **NORWICH CATHEDRAL BRODERERS' GUILD 'TEXTILE TREASURES OF THE CATHEDRAL'**

Showcasing some of the Cathedral's starred textile treasures including the Vice Dean's Cope (c.1570) and a Spanish altar frontal (c.1750).



Trial by Brian Whelan

**Friday 4 September to
Monday 19 October 2015**
**EDITH CAVELL:
A MARTYR'S RETURN**

An exhibition using contemporaneous writings and images to set Edith Cavell's faith and actions in the context of her time, in a journey from her execution to her final resting place at Norwich Cathedral.

Friday 4 September to Saturday 21 November 2015
(in the Cathedral)

**THE PASSION OF EDITH CAVELL:
THE WAY OF THE CROSS**

A narrative series of 14 paintings commissioned from Brian Whelan exploring the life of Norfolk nurse, heroine and martyr Edith Cavell through the lens of her Christian faith.

Saturday 24 October to Saturday 31 October 2015
HOSTRY FESTIVAL: PAINT OUT

As a part of the 2015 Hostry Festival, this exhibition will be the culmination of a unique outdoor event at which selected artists will paint *en plein air* at some of Norwich's finest historic landmarks.

Wednesday 4 November to Monday 23 November 2015
**DOUGLAS FARTHING:
A RESPONSE TO AFGHANISTAN**

Reflecting on conflict within the past 30 years of service by the war artist Douglas Farthing, retired Paratrooper and reservist with the Royal Anglian Regiment, together with Mike Fay, an Official US Marine war artist and Jules George, sponsored by the Ministry of Defence to visit Afghanistan.

Thursday 26 November to Tuesday 8 December 2015
**NORFOLK CONTEMPORARY CRAFT SOCIETY:
INSPIRED 2015**

Norwich Cathedral again welcomes the Norfolk Contemporary Craft Society, established for over 40 years renowned both locally and nationally for its high quality and stylish work.

Friday 11 December to Monday 11 January 2016
RICHARD DENYER: AFFINITY AND KINDRED

Photography investigating links between Norfolk and the Outer Hebrides. 70 diptychs described as '*A collection of photographs made in two differently marginal places, shaped by sea and faith*'.

Please visit www.cathedral.org.uk for more details.

Norwich Castle Museum & Art Gallery



Built by the Normans as a Royal Palace 900 years ago, **Norwich Castle** is now home to outstanding collections of fine and decorative art, archaeology and natural history.

Alongside its own exhibitions Norwich Castle hosts a regular programme of touring shows from major galleries and museums including Tate, V&A, British Museum, the Hayward Gallery and many more.

The art programme at Norwich Castle is supported by the East Anglia Art Fund – a local charity dedicated to bringing great art to Norfolk.
www.eastangliaartfund.org.uk



Exhibitions



Jeff Koons
Winter Bears 1988
ARTIST ROOMS
Tate and National Galleries of Scotland.

Acquired jointly through The d'Offay Donation with assistance from the National Heritage Memorial Fund and the Art Fund 2008 © Jeff Koons

Until Saturday 6 September 2015

ARTIST ROOMS: JEFF KOONS

In partnership with Norfolk & Norwich Festival

American artist Jeff Koons is widely regarded as one of the most important, influential, popular, and controversial artists of our time. This landmark exhibition includes his breakthrough work with vacuum cleaners as well as more recent explorations with inflatables cast from aluminium to showcase his originality and remarkably diverse art practice.

ARTIST ROOMS On Tour is supported by the National Lottery through Arts Council England and the Art Fund, making available the ARTIST ROOMS collection to galleries throughout the UK.

NORFOLK
& NORWICH
FESTIVAL
2015

www.museums.norfolk.gov.uk

Norwich Castle Museum
& Art Gallery, Castle Hill

Special exhibition galleries



DoES Liverpool,
Desktop Prosthetics



Rachel Rayns with the Raspberry Pi
Foundation, Neurotic Machines, 2015.
Images by Brian Slater.

Saturday 3 October to January 2016 BUILD YOUR OWN: Tools for Sharing

This exhibition provides a fascinating insight into today's making revolution. It features neurotic robots that can manage your garden, a global network producing prosthetic hands for children created by 3D printing, and explores new ways of repairing city spaces, empowering communities and reflecting local craft traditions.

A FACT and Crafts Council partnership exhibition in association with Norfolk Museums Service.



Supported using public funding by
**ARTS COUNCIL
ENGLAND**



Illustrations
© Cressida Cowell

Saturday 6 February to Monday 30 May 2016 A VIKINGS GUIDE TO DEADLY DRAGONS

An exhibition inspired by Cressida Cowell's hugely popular book series *How to Train Your Dragon*.

Originated by Seven Stories, The National Centre for Children's Books, this exhibition transports you back to the Dark Ages, where Vikings ruled and dragons roamed.

With Hiccup Horrendous Haddock the Third as your guide, you will discover the tribe of Hairy Hooligans, his island home of Berk, his dragon Toothless and his quest to become a hero!





© Caroline Wright

Until Saturday 27 September 2015

SAWDUST AND THREADS

During this residency and exhibition artist Caroline Wright works with deaccessioned museum objects. She made detailed drawings of these objects before beginning a process of painstaking deconstruction, returning them to their component parts. The project was conceived by Caroline Wright and Norwich Castle in partnership with the Polar Museum in Cambridge and UCL Museums & Collections in London.



*Frank Auerbach,
Head of Julia III,
2002, acrylic on
board,
Norfolk Museums
Service,
© Frank Auerbach*

From Wednesday 7 October 2015

COLLECTING IN EAST ANGLIA

Works of art acquired by Norwich Castle over the last five years will form the central focus of this display, including modern ceramics recently donated to the museum, paintings by Edward Seago and Alfred Sisley gifted through the Art Fund and a major work by Frank Auerbach formerly in the collection of Lucian Freud.

Colman Project Space



*John Sell Cotman,
Dock Leaves by a
Stream, c.1805-6,
© Norfolk Museums
Service (Norwich
Castle Museum &
Art Gallery)*

Until Saturday 6 March 2016

'ALMOST TOO DARING FOR AN INDIVIDUAL':

John Sell Cotman's one-man exhibition, 1806-7

In the winter of 1806-7, John Sell Cotman staged an extensive one-man exhibition in Norwich to present himself as an artist. This display re-imagines the show.

Colman Watercolour Gallery

Until Saturday 6 March 2016

SEEING THE LIGHT

This exhibition showcases works on paper from the collection which have rarely been displayed before thanks to the Works on Paper Digitisation Project, supported by the East Anglia Art Fund and sponsored by Norwich Town Close Estate Charity.



Norwich Castle Keep

Extended to Tuesday
27 September 2015

ANA MARIA PACHECO: THE ENCHANTED GARDEN

A new set of polychromed alabaster reliefs created by the artist in response to the medieval alabasters in the Castle's collection. Part of a city-wide celebration of Ana Maria Pacheco.



*Ana Maria Pacheco
Enchanted Garden
Alabaster, tempera and gold leaf
30 x 25 © the artist*

For full details on exhibitions and events please
see www.museums.norfolk.gov.uk
General enquiries 01603 493625 (Monday-Friday)
Bookings and information 01603 495897



Norwich Print Fair



Now celebrating its 20th year the Norwich Print Fair once again brings together over 30 of Norfolk and Suffolk's finest printmakers, displaying a wide variety of hand-made print techniques, all within the unique setting of an historic Norwich church.

The Norwich Print Fair was founded to showcase the talent and craft that goes into contemporary printmaking. From its inception, it has sought to inform and inspire audiences regarding the processes behind the creation of original prints.



Monday 7 to Saturday 19 September 2015
THE 20th NORWICH PRINT FAIR
AN EXHIBITION OF ARTISTS' ORIGINAL PRINTS
St. Margaret's Church Gallery St. Benedict's Street, Norwich

Open 10am to 5pm Monday to Saturday

Open Portfolio Days – Saturday 12 and Saturday 19
Sunday 13 September 11am to 4pm Printmakers in Action
– artists demonstrating their techniques

Admission free

On Saturday 12 and Saturday 19 September all of the artists will be present, displaying extra work, sketchbooks and printing plates to illustrate their varying techniques. The atmosphere is informal and friendly and everyone is happy to answer questions about their work.

The middle Sunday 13 September, will once again be focused on '*Printmakers in Action*', with a rare chance for the public to observe artists at work, watching them make original prints.

To complement this year's main exhibition, in celebration of its 20th year there will be a special trail of original prints throughout the Norwich Lanes. '*20/20*' will see 20 of the Norwich Print Fair's artists exhibiting examples of their work within the windows of local shops and businesses. Pick up a leaflet, follow the trail around the Lanes and see how many you can discover.

Norwich 20 Group



June 2015 group exhibition at the Undercroft

The Norwich 20 Group was founded by Walter Watling in 1944 with the intention of raising the standard of local professional art to something worthy of the artistic history of the city, achieved by selective membership and by mutual criticism and appraisal of work.

After 70 years, the membership has grown to more than eighty artists, working in a variety of media and including many with national reputations.

The group puts on regular exhibitions, has a monthly meeting, and a weekly life workshop.

For more information see www.norwich20group.co.uk
Free entry to all exhibitions

Exhibitions and events

Until 26 September

Theatre Royal Norwich, Theatre Street
WORKS ON PAPER

see page 43 for details

THE BIG DRAW AT THE FORUM

The Big Draw will be back in the February 2016 school half term week – more details closer to event!

Thursdays from 10 September to 10 December 2015, and
from 7 January to 24 March 2016 7.30–10pm

WEEKLY LIFE DRAWING WORKSHOP

Riverside Studio, Wensum Lodge, King Street, Norwich

This valued workshop is open to everyone, on a 'drop-in' basis, at £4 a time (plus a termly fee of £4, students are welcome, and exempt from this).

Come early to reserve a space. Bring your own drawing materials; boards, easels, chairs and donkeys provided.

**N20 Group host monthly open meetings at
Park Lane Chapel, Norwich on first Tuesday of
the month (except July & August) from 7.30pm**

Check website for details, free to attend and open to all, please arrive in good time to get a seat.



The Big Draw 2015

'Paint Out' is a multi-faceted event
aiming to redefine *en plein air* art practice.

Our core event is the premier juried
en plein air competition in the United
Kingdom, celebrating the talents of
national and international artists to
a wide and growing audience in the
heart of Medieval Norwich.

Event Dates

Call to Artists – Open Until July 31

October 20 - 22 Competition

October 23 Gala Exhibition Preview,
Auction and Awards

October 24 - 30 Exhibition

October 31 - November 28 Exhibition
at the Maddermarket Theatre

www.paintout.org   
For further information visit our website and follow us on social media



Norwich,
Norfolk,
England

October
2015



Hansells
HOISTRY FESTIVAL

The Gallery at Norwich University of the Arts (NUA)



The **Gallery at NUA** is a city centre public art space showing a programme of exhibitions by internationally recognised artists, curators and media practitioners. Exhibitions are accompanied by seminars and lectures delivered by specialists and curators, which enrich the University experience for students and those living and working in Norwich, as well as visitors to our city.

For more information about the Gallery and events at NUA visit www.nua.ac.uk/thegallery Twitter: [@galleryatnua](https://twitter.com/galleryatnua)

Exciting news for NUA

The Gallery at NUA is on the move!

For over 40 years, the NUA Gallery has been part of the main university building in St George's Street. In the Autumn 2015, it will be moving into a new purpose-designed gallery space at the junction of Bridewell Alley and St Andrew's Street. Very exciting!

When the exhibition programme is confirmed it will be posted on www.nua.ac.uk/thegallery. Please follow social media for updates.

British Art Show 8 comes to Norwich

From 24 June to 4 September 2016 Norwich will host the British Art Show. This is widely recognised as the most ambitious and influential exhibition of contemporary British art, unrivalled in its scope and unprecedented in terms of outreach.

Launched in 1979 the British Art Show is organised every five years, hosted by galleries in four cities across the UK and curated by two curators appointed by the host venues and the Hayward Gallery. The British Art Show provides an opportunity to introduce the work of some of the most important UK artists to the public outside London for the first time. It is expected to attract over 250,000 visitors to the city.

The main venues will be NUA, Norwich Castle and the Forum and there will be 'fringe' events. Look out for updates on the website and social media.

2015
MA Degree Show
4 – 9 September

www.nua.ac.uk/madegreeshow
#NUAmashow



NORWICH
UNIVERSITY
OF THE ARTS

94% of NUA graduates are in employment or further study within 6 months

Destinations of Leavers from Higher Education (DLHE) 2013/14

ANIMATION

ARCHITECTURE

FASHION

FINE ART

FILM

GAMES

GRAPHIC DESIGN

ILLUSTRATION

PHOTOGRAPHY

TEXTILES

VFX

OPEN DAYS

Undergraduate

Friday 25 September

Saturday 10 October

Friday 16 October

Friday 23 October

Saturday 7 November

Friday 4 December

Friday 8 January 2016

Postgraduate

Saturday 5

September

NORWICH UNIVERSITY OF THE ARTS

We'd love to meet you The best way to experience what NUA has to offer is to see for yourself at one of our open days www.nua.ac.uk/opendays



OUTPOST



OUTPOST is an artist-run gallery, based in Norwich, committed to the presentation of contemporary art. Since its founding in November 2004, OUTPOST has established itself as a leading centre for artist activity in the east of England. Currently, bi-monthly exhibitions run from Thursday to Sunday, 12–6pm.

Alongside, OUTPOST operates a programme of offsite projects, events and produces a series of artists editions. Check website and social media for updates.

OUTPOST Gallery, 10b Wensum Street, Tombland,
Norwich, Norfolk NR3 1HR Tel: 01603 612428

OUTPOST took over Gildengate House on Upper Green Lane in 2009, and has converted the large open plan interior of the former office block into affordable artists' studio spaces. The studios currently accommodate around 85 Norwich-based artists, ranging from recent graduates to internationally exhibiting practitioners. As well as housing studio spaces, Gildengate House is a satellite venue for OUTPOST's exhibition and events programme, hosting regular non-gallery based projects, residencies, talks, film screenings and performances.

OUTPOST runs a membership scheme which is open to anyone. Membership costs £15 per year or a day's invigilation can be provided in lieu of payment.

Members are encouraged to submit material to the members' archive and can be considered for various artists opportunities. The membership provides a critical network for a community inside and beyond Norwich, who in turn create a diverse, informed, and engaged gallery audience. The gallery is run by a Steering Committee of up to eight members, with a limit of two years service.

OUTPOST receives support from Arts Council England.

OUTPOST studios, Gildengate House, 1 Upper Green Lane,
Norwich NR3 1AX.

For details please contact questions@norwichoutpost.org

The South Asian Decorative Arts and Crafts Collection Trust



The Old Skating Rink Gallery

The SADACC Trust was established in 2010 to record, conserve and promote the arts, crafts and cultures of South Asia. The Trust's collection is exhibited in an imaginatively restored Victorian skating rink, and includes works on paper, textiles, objects, furniture and architectural features.

The collection illustrates everyday arts and crafts of this region, covering a period from the 18th to the 21st century.

The SADACC Trust Registered Charity Number 1137415

Exhibitions

Items from the permanent collection are exhibited in changing displays.

10 September 2015 to January 2016

CLOTH: A JOURNEY THROUGH SOUTH ASIAN TEXTILES

Opening times: daily except Sundays and bank holidays
9.30am-5pm. Free admission.

For more details or to arrange tours please contact:
The Old Skating Rink Gallery (Country & Eastern)
34-36 Bethel Street, Norwich, Norfolk, NR2 1NR
Tel: 01603 663890 Email: info@sadacc.co.uk



www.sadacc.co.uk



Shawl detail, Sind, Pakistan, early 20thC.



'Company School' painting, India, early 19thC.

SADACC Trust at the
Old Victorian Skating Rink

Sainsbury Centre for Visual Arts



The Sainsbury Centre for Visual Arts is one of the most prominent university art galleries in Britain, and one of the nation's principal centres for the study and presentation of art. Designed by acclaimed architect Norman Foster, it is one of the most important buildings of the late twentieth century.

The Centre owes its existence to the generosity of Robert and Lisa Sainsbury who donated their extraordinary art collection which includes works dating from prehistory to the present day from across the globe. Alongside this sits two further principle collections: The Anderson Collection of Art Nouveau, donated in 1978 by Sir Colin Anderson; and the University Collection of Abstract and Constructivist Art, Design & Architecture established by the University in 1968.

The Sainsbury Centre's art collections are displayed across the ground floor of the building whilst on the lower level are the magnificent newly-created exhibition galleries, providing the largest temporary exhibition space in the East of England.

The Sainsbury Centre offers an award-winning learning programme of gallery talks, lectures, and art workshops.

Open Tuesday–Friday 10am–6pm. Weekends 10am–5pm.
admission to the building and permanent collection is free, special exhibitions may be subject to charges.

For more information and bookings visit www.scva.ac.uk

Exhibitions

12 September '15 to 24 January '16
**MAGNIFICENT OBSESSIONS:
THE ARTIST AS COLLECTOR**

This major exhibition curated and organised by Barbican Centre celebrates the many and varied motivations for collecting. The exhibition presents the fascinating personal collections of post-war and contemporary artists, including Andy Warhol, Arman, Peter Blake, Edmund de Waal, Damien Hirst, Howard Hodgkin, Sol LeWitt, Martin Parr, Hiroshi Sugimoto and Pae White.



Hirosada
Untitled, 1860s
LeWitt Collection, Chester,
Connecticut USA
Photo by Jody Dole

While many of the participating artists are recognised internationally, their collections are often and less well known, and the majority have never been seen in the UK before this major exhibition

Their collections range from mass-produced memorabilia to rare art and artefacts and from natural history specimens to curios and objects reflecting popular culture. These extraordinary collections help reveal the creative processes of some of the most important artists of the last 50 years.



Andy Warhol Cookie Jars assembly



Howard Hodgkin
In the Studio of Jamini Roy,
1976-79

7 November 2015 to 20 March 2016

ALPHONSE MUCHA: IN QUEST OF BEAUTY

Czech-born Alphonse Mucha (1860-1939) is one of the most celebrated artists of the fin-de-siècle. Rising to international fame with his elegant designs for decorative panels, and stunning advertising posters, 'le style Mucha' became synonymous with Art Nouveau. The show will include over 60 works drawn primarily

from the collection of the Mucha Trust, including posters, drawings, paintings and photographs. The Sainsbury Centre is proud to be working with the Mucha Foundation on this exhibition.

12 March to 7 August 2016

FIIJI: ART AND LIFE IN THE PACIFIC

The most comprehensive exhibition about Fiji and Fijian art ever assembled, *Fiji: Art and Life in the Pacific* will highlight exceptional collections from the UK and elsewhere, including the Fiji Museum. The exhibition will bring together beautiful historic objects such as wood sculpture, bowls, canoes, weapons, large painted barkcloths and finely crafted objects made of shell and whale ivory, as well as examples of contemporary art.

Continuity of artistic practice in Fiji will be explored. Among the highlights will be a specially commissioned 26-ft sailing canoe and barkcloth wedding dresses. Over 250 objects, paintings, drawings and historic photographs will celebrate Fijian creativity and the important place of art in Fijian culture.

Advance notice: 23 April to 25 September 2016

ALBERTO GIACOMETTI: A LIFE AND LEGACY

In April 2016, The Sainsbury Centre for Visual Arts will open an exhibition dedicated to the work of Alberto Giacometti commemorating the 50th anniversary of the artist's death.



Fiji - Priest's yaqona dish in duck form. Polynesia, Fiji
Early 19th century

Permanent collection

THE ROBERT & LISA SAINSBURY COLLECTION

The Living Area

The Robert and Lisa Sainsbury Collection features work spanning 5,000 years of human creativity. Permanently displayed in the Living Area Gallery, the collection includes major holdings of art from Oceania, Africa, the Americas, Asia, the ancient Mediterranean cultures of Egypt, Greece and Rome, Medieval Europe, and includes a significant number of works acknowledged as seminal examples of European modern art, such as Pablo Picasso, Edgar Degas, Francis Bacon, Jacob Epstein, Henry Moore, Alberto Giacometti and Amedeo Modigliani. In 1978 the presentation of ancient world art alongside modern masters was greeted as a revelation, today it continues to provide juxtapositions across time and culture that can inspire and surprise.

The East-End gallery provides the opportunity for greater freedom in examining the nature of the collections and their particular historical context. There is a regular programme of changing thematic displays with greater interpretation as well as featuring the collection of modern ceramics including masterpieces from Lucie Rie and Hans Coper. In addition, a flexible project space alongside shows contemporary or historical displays that relate and inform the Sainsbury Collection.

Opening times:
Tuesday–Thursday, 10am–6pm. Friday 10am–9pm,
Weekend 10am–5pm.
Closed on Mondays
and bank holidays.

Admission to the
Sainsbury Centre and
permanent collections
is free.

*Bucket man,
John Davies (b. 1946),
England, 1974, mixed media.
h. 210.0 cm;
base 152.4 x 137.2 cm.
Acquired from the artist in
1974.*



*Little Dancer Aged 14
1880–1881
Edgar Degas (1834–1917)
France
Bronze, fabric
UEA 2*

Did you know that:

- The Sainsbury Centre for Visual Arts was architect Sir Norman Foster's first public building
- The Robert and Lisa Sainsbury Collection is one of the few intact modernist collections of the 20th century and is of national and international importance
- The permanent collection is displayed in the Living Area gallery at SCVA, which is a reflection on how the Sainsburys surrounded themselves with art in their own home.

Tel: 01603 593199 email: scva@uea.ac.uk
Facebook: [/sainsburycentre](https://www.facebook.com/sainsburycentre) Twitter: [@sainsburycentre](https://twitter.com/sainsburycentre)

St Etheldreda's Artists' Studios



Richard Cleland

St Etheldreda's Artists' Studios is housed in the beautiful church of St Etheldreda, opposite Wensum Lodge in King Street. It is the longest running artists' studios in the city; currently thirteen members have working spaces.

Every first Saturday of the month we are open from 12 to 4pm to show an exhibition of fresh work by one of our artists. All are welcome.

St Etheldreda's Artists Studios, King Street,
Norwich NR1 1QH. Telephone 01603 631928
Contact: Jack Godfrey, godfrej@talk.com or
Linda Chapman, lindachapman49@hotmail.com



*Jude
Chaney*



Fliss Cary

Exhibitions

Heritage Weekend open 10am–5pm
Saturday 12 & Sunday 13 September
**GROUP EXHIBITION WITH
KING STREET THEME**

First Saturday openings from 12–4pm
(not September or January):

3 October: Fliss Cary
7 November: Helen Tobin
5 December: Group exhibition
6 February: Stephen Palmer



Frances Martin



Jack Godfrey



Richard Cleland

Theatre Royal Norwich



Theatre Royal Norwich hosts four exhibitions each year by prominent, professional artists from the region. They are kindly sponsored by Targetfollow Estates Ltd. and curated by Sarah Cannell. The work is displayed in the Adnams Circle Bar on the first floor at the Theatre Royal.

All work can be purchased from the box office and the exhibitions are open 9.30am–6pm, Monday to Saturday.

Theatre Royal, Theatre Street, Norwich NR2 1RL
Email: sarah.cannell1@gmail.com with any queries

Exhibitions

To 27 September 2015

WORKS ON PAPER

Special group exhibition featuring selected works from Norwich 20 Group.

29 September to 11 October 2015

UP & COMING

An exhibition of A Level photography work from Hellesdon High School.

15 October to 24 January 2016

MARTIN LAURANCE

Colourful, energetic mixed media painting. Featuring the coastline of Norfolk as well as landscapes of Orford Ness, Cornwall and Yorkshire.

27 January to 23 April 2016

FIONA ROBERTS: THRESHOLD

When clouds roll through a clear day the artist is given an opportunity to capture the qualities of a threshold environment, delineated by cloud. The moments before a storm, the immediacy of a light, glimpsed for seconds close to the ground and below the cloud base. Fiona Roberts' new work is a response to these changes.

Exhibition programme supported by



River Waveney Sculpture Trail



Jacqui Jones

Following last year's success Waveney & Blyth Arts presents a unique sculpture trail around the River Waveney Trust site, at the former Otter Trust near Bungay. Over 30 artists have responded to curator Sarah Cannell's call for 3-D work to complement the beautiful site along the banks of the Waveney, including Liz McGowan, Rachael Long, Kally Davison, Nick Ball and Jayne Ivimey.

Waveney & Blyth Arts also commissioned sound artist Mike Challis to create *SoundHide*, a temporary structure of natural materials incorporating an immersive and evocative soundscape, created from edited sounds recorded on the site through the different seasons.

14 August–6 September

At the River Waveney Study Centre,
Old Harleston Road, Earsham, Bungay NR35 2AF

Open on Fridays, Saturdays, Sundays & Bank Holiday
Monday 10am–4pm
Adults £4, W&BA and RWT members £3. Under 18s Free.

Events

Saturday 22 August 4–6pm DANCING THE LANDSCAPE

Led by Mel Horwood, community dance practitioner.

Cost £5 including entrance to the Trail.

To book contact Mel on 07500 600176 or email
meljhorwood@yahoo.co.uk

Thursday 27 August 2–4 pm CURATOR'S GUIDED WALK

Cost £7 including tea and cake

To book: email Sarah at sarah.cannell1@gmail.com

Sunday 30 August 10am–4pm FAMILY FUN DAY

Cost £2 per child

River Waveney Trust Café

The café is open every day providing tea and coffee, cakes, biscuits, rolls and sandwiches.

Getting there – see the website for directions

Details about access information, features and amenities, including surfaces and distances are available at www.phototrails.org. Only assistance dogs allowed.



DO YOU NEED A HAND?



Norwich Hackspace is involved in a new exhibition coming to Norwich Castle in the autumn called *Build Your Own: Tools for Sharing*, currently at FACT in Liverpool.

In partnership with DoES Liverpool, we will be 3D printing prosthetic hands* and we are looking for people (ideally children) who don't have fingers they can use but do have a functioning wrist and who would like a hand like the one above.

If you or someone you know would be a suitable candidate, please get in touch and we will tell you more - or apply via the Eventbrite link here or on the website www.norwichhackspace.org

*Inspired by a global project, e-Nable which encourages volunteers to 3D print hands for people who need them see www.enablingthefuture.org

Part of *Build Your Own: Tools for Sharing* – a touring exhibition jointly produced by Crafts Council, FACT (Foundation for Art and Creative Technology) and Norfolk Museums Service at Norwich Castle, Norwich
3 October '15 – 3 January '16

Norwich Hackspace is taking part in an exhibition at Norwich Castle this autumn

BUILD YOUR OWN : TOOLS FOR SHARING

DESKTOP PROSTHETICS

3 OCTOBER 2015 TO 3 JANUARY 2016

Throughout the exhibition Norwich Hackspace will be running two Ultimaker 3D printers at Norwich Castle, printing prosthetic hands for children. They will also be running workshop sessions on Arduino, Raspberry Pi, Adafruit, MaKey-MaKey and Littlebits.

Details of sessions will be posted on the Norwich Hackspace website as they become available.

Norwich Hackspace is a new community workshop group which meets at Norwich Men's Shed in Pitt Street, Norwich every week on Mondays for member sessions. People help each other with projects, sharing skills and knowledge - both new tech and old, mixing curiosity, creativity, engineering and science, and having fun.

If you are interested in being a Norwich Hackspace member, check website www.norwichhackspace.org for details.



NORWICH HACKSPACE.ORG

A quick guide to art in Norwich



View of Norwich from City Hall towards Norwich Castle

Norwich is a medieval city which, in its hey-day, rivalled London in terms of size and was, for many years, England's second city, being only 100 miles from the court of London. It was a wealthy city with its fame built on the textile trade, weaving and particularly wool. Nearly half of the population was French, Dutch or Flemish and engaged in the weaving trade – hence the name of the football club, the Canaries, called after the birds which the weavers kept for company.

In the Industrial Revolution, Norwich was off the beaten track for commerce and transport and so attracted artists, philosophers and radical thinkers, and was home to the famous Norwich School of Painters. Many religious non-conformists also settled here and the place became a hotbed for artists and writers, as it is today. It is also now a UNESCO City of Literature.

Amongst its many cultural assets Norwich can claim:

Norwich University of the Arts, one of the best universities for courses in animation and film, fine art and illustration, architecture, games design, graphic design, media and much more, including a new Gallery in St Andrew's Street, opening October 2015.

Norwich Castle and the Sainsbury Centre for Visual Arts – world-class venues, attracting national-level touring shows, with permanent collections of World Art as well as work by Picasso, Henry Moore, Francis Bacon, Modigliani, Degas and local masters – Munnings and the Norwich School of Painters including contemporary work from artists such as Colin Self.

Norfolk and Norwich Festival in May, an international multi-arts annual festival with 17 days of concerts, outdoor arts and theatre, both mainstream and left-field, as well as an increasingly innovative and site-specific visual arts programme.

Norwich Arts Centre is a multi-arts venue with a visual art programme which includes live art, photography and digital art. Norwich Cathedral has an events programme with a regular cycle of exhibitions in the Hostry as well as the Hostry Festival.

There are a number of artist-led galleries and studios, notably OUTPOST and Stew – and some well-established and very active, artists' groups such as Norfolk Contemporary Arts Society, Anteros Arts, Norwich 20 Group and the Lonely Arts Club. Sculpture for Norwich is a charity which promotes and fundraises for more public sculpture in the city, and increased awareness.

Venues such as the Forum, Assembly House and St Margaret's Church all support artists and host exhibitions along with several commercial galleries such as Art 18|21 and Mandell's. As well as Art in Norwich partners, there are over 800 practising visual artists and groups in Norfolk and a thriving underground arts scene in addition to the main institutions. www.artinnorwich.org.uk

Sainsbury Centre
for Visual Arts at UEA
approx 2 miles
no 25 bus

GALLERIES AND ART VENUES IN THE CITY OF NORWICH



Art in Norwich members and venue details

- 1 Anteros Arts Foundation, 7–15 Fye Bridge Street, NR3 1LJ
Tel: 01603 766129 www.anteros.co.uk
- 2 Art 18|21, Tel: 07879 673419 www.art1821.com
- 3 Assembly House and Noverre Gallery, Theatre Street, NR2 1RQ
Tel: 01603 626402 www.assemblyhousenorwich.co.uk
- 4 Fairhurst Gallery, Websdales Court, Bedford Street, NR2 1AR
Tel 01603 614214 www.fairhurstgallery.co.uk
- 5 The Forum, Millennium Plain, Norwich NR2 1TF
Tel: 01603 727950 www.theforumnorwich.co.uk
- 6 Mandell's Gallery, Elm Hill, NR3 1HN
Tel: 01603 626892 www.mandellsgallery.co.uk
- 7 Moosey Art, 22 Bridewell Alley, Norwich, Norfolk NR2 1AQ
Tel: 07792 011541 www.mooseyart.co.uk
- 8 Norwich Arts Centre, St Benedicts Street, NR2 4PG
Tel: 01603 660352 www.norwichartscentre.co.uk
- 9 Norwich Castle Museum & Art Gallery, Norwich Castle, Castle Hill, NR1 3JU
Tel: 01603 493625 (Mon–Fri) www.museums.norfolk.gov.uk
- 10 Norwich Cathedral, The Close, Norwich NR1 4EH
Tel: 01603 218300 www.cathedral.org.uk
- 11 The Gallery at Norwich University of the Arts, St George's Street, NR3 1BB
Tel: 01603 886385 www.nua.ac.uk
- 12 OUTPOST Gallery, 10b Wensum Street, NR3 1HR
Tel: 01603 612428 www.norwichoutpost.org

- 13 Sainsbury Centre for Visual Arts, University of East Anglia, NR4 7TJ
Tel: 01603 593199 www.scva.ac.uk
- 14 Stew Gallery & Artists' Studios, 40 Fishergate NR3 1SE
- 15 St Etheldreda's Artists' Studios, King Street
South Asian Decorative Arts & Crafts Collection Trust,
The Old Skating Rink Gallery, 34–36 Bethel Street, NR2 1NR
Tel: 01603 663890 www.sadacc.co.uk
- 17 Targetfollow at Theatre Royal, Theatre Street, NR2 1RL
e: sarah.cannell1@gmail.com

Other venues used by members for exhibitions and events

- 18 St Margaret's Church, St Benedict's Street, Norwich NR2 4AQ
*Not open all the time
- 19 The Undercroft, beneath Memorial Gardens, Norwich Market
*Not open all the time email clare.hubery@norwich.gov.uk

Member organisations without venues

Lonely Arts Club www.thelonelyartsclub.org.uk
Norfolk & Norwich Festival www.nnfestival.org.uk
Norfolk Contemporary Arts Society
email: info@n-cas.org.uk www.n-cas.org.uk
Norfolk & Norwich Art Circle
Jan & Richard Motley 01508 495320 www.nnartcircle.com
Norwich 20 Group email: n20gnoticeboard@gmail.com
www.norwich20group.co.uk
Culture Shift email: info@theshiftnorwich.org.uk
Tel 07946 261651 www.theshiftnorwich.org.uk

Art in Norwich

'What's on?' a round-up of visual art, sculpture and architectural events in Norwich



Art in Norwich partners are:



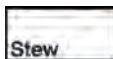
NORWICH
UNIVERSITY
OF THE ARTS

OUTPOST



ANTEROS
ARTS FOUNDATION

NORWICH
CATHEDRAL



St Etheldreda
Artist Studios

FAIRHURST
GALLERY



SAINSBURY
CENTRE
for Visual Arts

the
Forum



SADACC Trust

ncas
NORFOLK
CONTEMPORARY
ART SOCIETY

NORWICH
20
GROUP

Mandell's
Gallery



Norfolk
Museums



Shift Norwich

Art in Norwich is produced by Culture Shift Norwich
and Norwich Visual Art Forum
www.artinnorwich.org.uk



Art in Norwich